

**DUAL INDUCTION  
GUARD LOG**

WITH 2" LINEAR CORRELATION LOG

COMPANY AMERICAN GUASAR PETROLEUM COMPANY  
WELL LARKINS NO. 23-33

FIELD MIST NEHALEM  
COUNTY COLUMBIA STATE OREGON

Location N/A RECEIVED-PTLD  
SEP 30 1980

Log Measured from C.L. OR 10.5 Ft Above Perm Datum Elev. KB 707.5  
GL 697.0

Date 8-31-80 RECEIVED-PTLD  
SEP 27 1980

Run-In-Driver 2924  
Drm. - Visor 2918

Top Log liner 518 @ 518

Casing - Driller 518 @ 518

Casing - Welex 518 @ 518

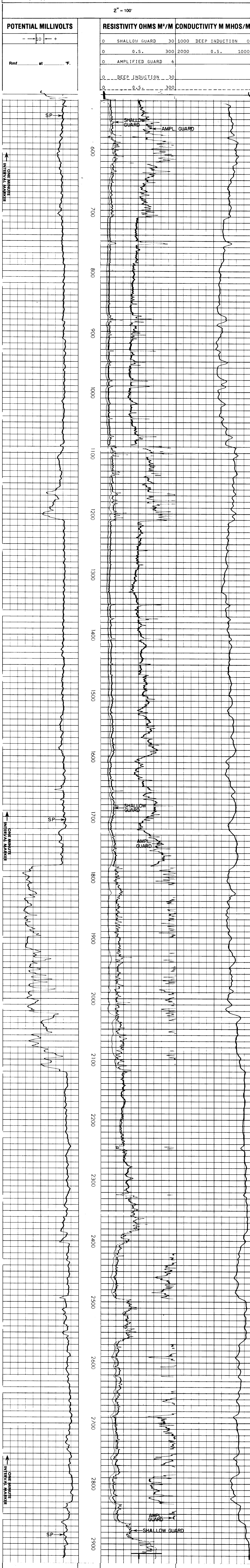
Bit Size 6 3/4  
Type Fluid in Hole LIQUID-SULF

Dens. LVSC. 9.6 @ 38  
pH Fluid Loss 10.5 @ 8.8 ml  
Source of Sample CALCULATED  
F. @ Meas. Temp. 2.50 @ 68 F  
F. @ Meas. Temp. 1.50 @ 70 F  
Source R<sub>1</sub> MEASURED  
F. @ BHT 1.29 @ 104 F  
Time Since Circ. 2 HOURS  
Max. Rec. Temp. 104 F @ T.D.  
Equip. Location 28316 1 MOLLAND  
Recorded by BRUER

Service Ticket No 055213 Remarks

Change in Mud Type or Additional Samples		Type Log	Depth	SCALE CHANGES	Scale Up Hole	Scale Down Hole
Date	Sample No.					
Depth - Driller						
Type Fluid in Hole						
Dens.	Visc.					
ph	Fluid Loss					
Source of Sample				EQUIPMENT DATA		
R <sub>1</sub> @ Meas. Temp.				Run No.	Tool Type and No.	Pad Type
R <sub>2</sub> @ Meas. Temp.				ONE	IND. 24026	1 1/2 SD
R <sub>3</sub> @ Meas. Temp.						
Source R <sub>1</sub> R <sub>2</sub>						
R <sub>1</sub> @ BHT	1.24 @ 104 F					
R <sub>2</sub> @ BHT	1.34 @ 104 F					
R <sub>3</sub> @ BHT	0.84 @ 104 F					

Welex does not guarantee the accuracy of any interpretation of log data, conversion of log data to physical rock parameters, or recommendations which may be given by Welex personnel or which may appear on the log in any other form. Any user of such data interpretations, conversions or recommendations agrees that Welex is not responsible, except where due to gross negligence or willful misconduct, for any loss, damages, or expenses resulting from the use thereof.



AMERICAN GUASAR PETROLEUM COMPANY  
LARKINS NO. 23-33  
MIST NEHALEM  
COLUMBIA COUNTY, OREGON

T.D. LOGGED 2916  
T.D. DRILLER 2940  
T.D. WELEX 2918  
ELEV.: KB 707.5 GL 697.0

