

**COMPENSATED
ACOUSTIC VELOCITY
LOG**

COMPANY REICHOLD ENERGY CORPORATION
 WELL LABEL NO. 2
 FIELD NEHALEM BASIN
 COUNTY COLUMBIA STATE OREGON
 Location N/A
 Other Services: IEL, DIP

FIELD HEHALEM BASIN
 County COLUMBIA State ORE.

Permanent Datum G.L. OR Elev. 519.82
 Log Measured From K.B. OR 10.5 Ft Above Perm Datum Elev. KB 530.32
 Drilling Measured From K.B. G.L. 519.82

Date 9-26-79
 Run No. ONE
 Depth-Driller 2857
 Depth-Welex 2840
 Bm. Logiter 2835
 Top Log-Driller 398
 Casing-Welex 398 @ 397 @ @ @ @
 Bl Size 0 1/4
 Type Fluid in Hole LI6ND-SULF

Dens. Visc. 77
 pH Fluid Loss 10.5 3.7 ml
 Source of Sample PITT
 H_m @ Meas. Temp. 1.9 @ 77 °F
 R_m @ Meas. Temp. 1.86 @ 72 °F
 R_w @ Meas. Temp. 2.4 @ 66 °F
 Source R_m R_w MEASURED
 R_m @ BHT 1.27 @ 115 °F
 R_w @ BHT 1.15 @ 110URS
 Time Since Circ. 4 1/2 HOURS
 Max. Rec. Temp. 115 °F @ BHT
 Equip. Location 9430 WDLND
 Recorded By KENNEDY
 Witnessed By FRY, BRUER, CLARE

Service Ticket No 048898 Remarks:

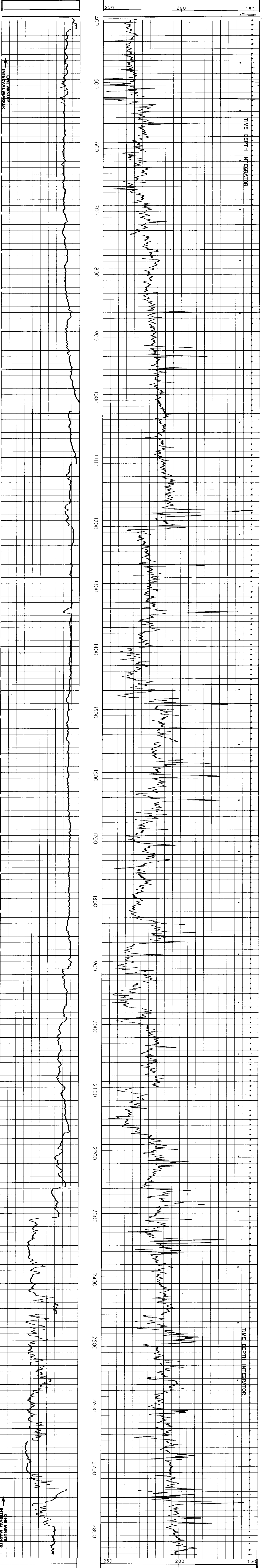
Change in Mud Type or Additional Samples		SCALE CHANGES			
Date	Sample No.	Type Log	Depth	Scale Up Hole	Scale Down Hole
Depth-Driller					
Type Fluid in Hole					
Dens.	Visc.				
ph	Fluid Loss	ml			
Source of Sample					
R _m @ Meas. Temp.					
R _w @ Meas. Temp.					
R _m @ Meas. Temp.					
Source: R _m R _w					
R _m @ BHT	1.27 @ 115 °F				
R _w @ BHT	1.16 @ 115 °F				
R _m @ BHT	1.37 @ 115 °F				

EQUIPMENT DATA

Run No.	Tool Type and No.	Pad Type	Tool Position	Other
ONE	C/AVL 13913		FREE	

Welex does not guarantee the accuracy of any interpretation of log data, conversion of log data to physical rock parameters, or recommendations which may be given by Welex personnel or which may appear on the log or in any other form. Any user of such data, interpretations, conversions or recommendations agrees that Welex is not responsible, except where due to gross negligence or willful misconduct, for any loss, damages, or expenses resulting from the use thereof.

2" = 100'



REICHOLD ENERGY CORPORATION	T.D. LOGGED 2835
LABEL NO. 2	T.D. DRILLER 2857
NEHALEM BASIN	T.D. WELEX 2840
COLUMBIA COUNTY, OREGON	ELEV: KB 530.32 GL 519.82