



DUAL INDUCTION-SFL 2"

CSU

COMPANY: REICHHOLD ENERGY CORPORATION  
 WELL: LIBEL #12-14  
 RECEIVED-PT: DEC 3 1982

FIELD: MIST  
 COUNTY: COLUMBIA  
 STATE: OREGON

LOCATION: 1819' SOUTH OF NORTH LINE  
 & 484' EAST OF WEST LINE  
 SEC: 14 T1P: 6N RGE: 5W, W44M

PERMANENT DATUM: EL. 525.7'  
 ELEVATIONS-  
 ELEV. OF PERM. DATUM: KB1 537.1'  
 LEG MEASURED FROM: KB  
 DRLG. MEASURED FROM: ABOVE PERM. DATUM KB  
 GL1 525.7'

DATE: 21 OCT 1982  
 RUN NO: 1

DEPTH-DRILLER: 2681.0'  
 DEPTH-LOGGER: 2680.0'  
 BIT. LOG INTERVAL: 2674.0'  
 TOP LOG INTERVAL: 419.0'  
 CASING-DRILLER: 417'  
 CASING-LOGGER: 7' 419'  
 BIT SIZE: 6 1/4"

OTHER SERVICES-  
 BHC  
 HDT

PROGRAM  
 TAPE NO:  
 EE. 4  
 SERVICE  
 ORDER NO:  
 309821

TYPE FLUID IN HOLE: GEL/LIGNO  
 DENSITY: 10.2 LB/G  
 VISCOSITY: 51.0 S  
 PH: 9.5  
 FLUID LOSS: 4.8 C3  
 SOURCE OF SAMPLE: FLOWLINE  
 RM: 1.900 OHMM AT 75.0 DEGF  
 RMF: 1.970 OHMM AT 63.0 DEGF  
 RMC: 2.010 OHMM AT 61.0 DEGF  
 SOURCE RMF/RMC: MEASURED/MEASURED  
 RM AT BHT: 1.145 OHMM AT 129. DEGF  
 RMF AT BHT: 1.013 OHMM AT 129. DEGF  
 RMC AT BHT: 1.005 OHMM AT 129. DEGF

TIME CIRC. STOPPED: 0100  
 TIME LOGGER ON BTM.: 0545

MAX. REC. TEMP: 129.0 DEGF

LOGGING UNIT NO: 8126  
 LOGGING UNIT LOC: SACRAMENTO  
 RECORDED BY: COLLINS  
 WITNESSED BY: ALGER

REMARKS:

EQUIPMENT NUMBERS-  
 DIS-EA 83 DIC-DA 47 IEM-BD 656

ALL INTERPRETATIONS ARE OPINIONS BASED ON INFERENCES FROM ELECTRICAL OR OTHER MEASUREMENTS AND WE CANNOT, AND DO NOT GUARANTEE THE ACCURACY OR CORRECTNESS OF ANY INTERPRETATIONS, AND WE SHALL NOT, EXCEPT IN THE CASE OF GROSS OR WILLFUL NEGLIGENCE ON OUR PART, BE LIABLE OR RESPONSIBLE FOR ANY LOSS, COSTS, DAMAGES OR EXPENSES INCURRED OR SUSTAINED BY ANYONE RESULTING FROM ANY INTERPRETATION MADE BY ANY OF OUR OFFICERS, AGENTS OR EMPLOYEES. THESE INTERPRETATIONS ARE ALSO SUBJECT TO OUR GENERAL TERMS AND CONDITIONS AS SET OUT IN OUR CURRENT PRICE SCHEDULE.

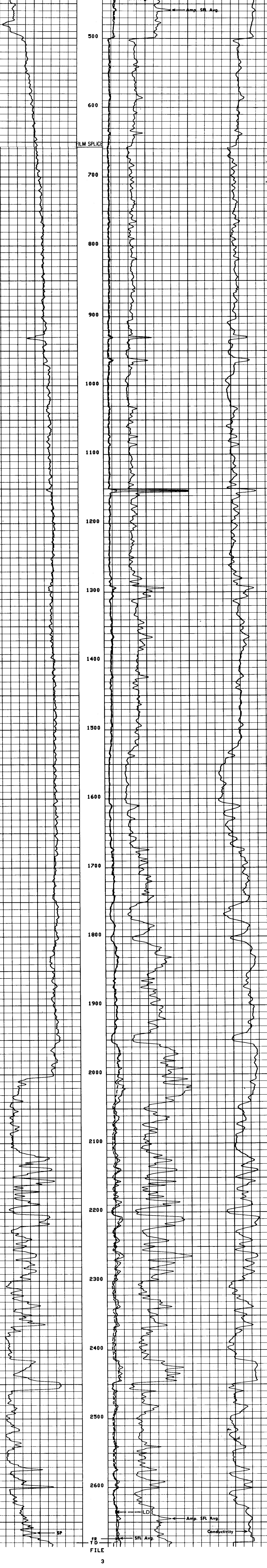
FILE

106

SP (MV)	ILD (OHMM)	SFLA(OHMM)	CILD(MMHQ)
-100.0 0.0	0.0 30.000	0.0 6.0000	0.0 30.000 1000.0 0.0

FILE

105



FILE

3

SP (MV)	ILD (OHMM)	SFLA(OHMM)	CILD(MMHQ)
-100.0 0.0	0.0 30.000	0.0 6.0000	0.0 30.000 1000.0 0.0

SENSOR MEASURE POINT TO TENSION REFERENCE POINT

SFL	3.9 FEET	ILD	6.9 FEET
SP	.0 FEET	ILM	3.3 FEET
TENS	.0 FEET	SPAR	.0 FEET

PARAMETERS

NAME	VALUE	UNIT	NAME	VALUE	UNIT
DSEC	4.10000	MMHQ	BS	6.25000	IN
MSEC	11.60000	MMHQ	SBR	1.00000	OHMM
BMS	OPEN		FPHI	SPHI	
DD	4.00000	F			

COMPANY: REICHHOLD ENERGY CORPORATION  
 WELL: LIBEL #12-14  
 FIELD: MIST  
 COUNTY: COLUMBIA STATE: OREGON

SCHL. FR. 2674.0'  
 SCHL. TD. 2680.0'  
 DRLR. TD. 2681.0'

Elev: KB 537.1'  
 DF N/A  
 GL 525.7'