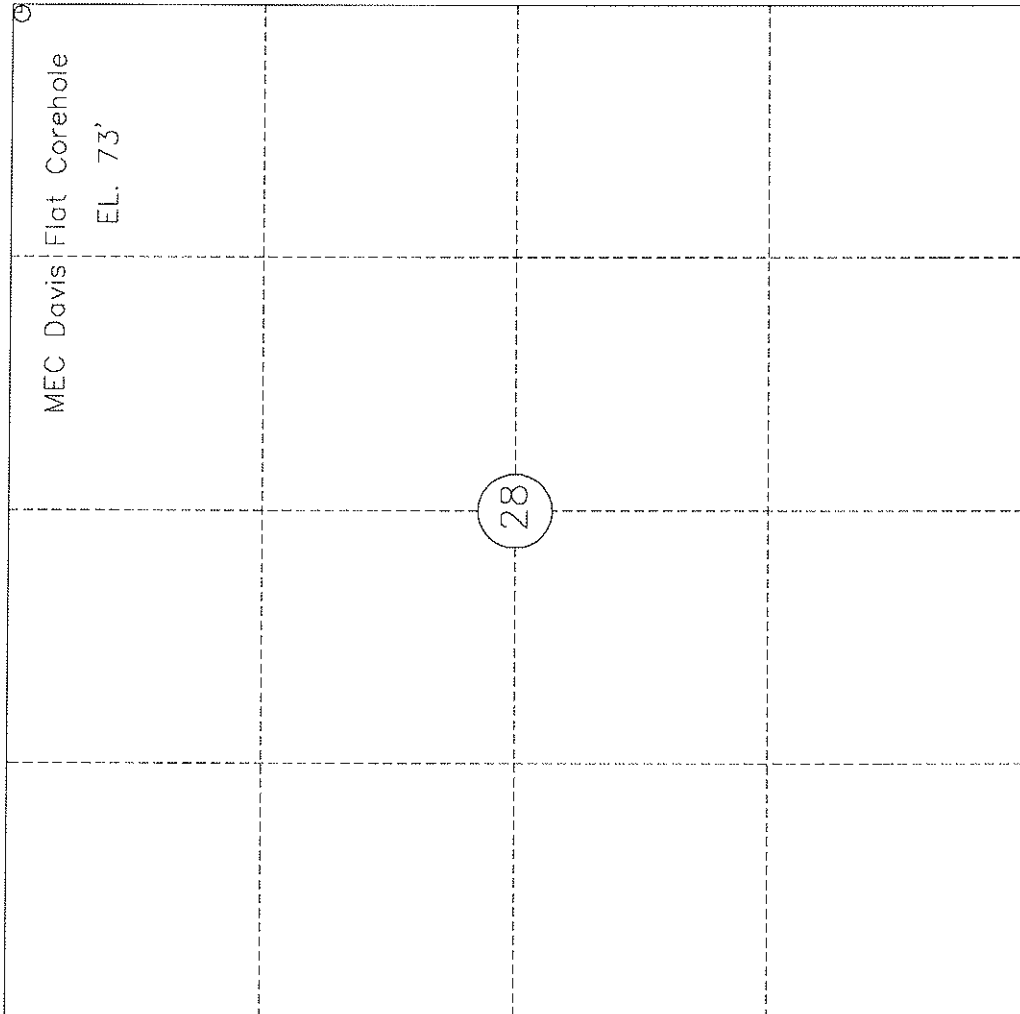


MEC Davis Flat Corehole

Range 13 West



The survey department of Menasha Forest Products Corp. has in accordance with a request from Steve Pappajohn for Methane Energy Corporation determined the location of MEC Davis Flat Corehole to be 45' FEL & 45' FNL Section 28, TWP. 26 S., Rge. 13 W., W.M., Coos Co. OR.

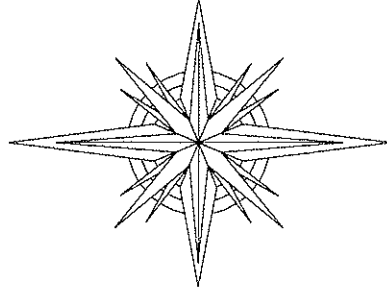
Date: December 3, 2004

I hereby certify that this plat is an approximate representation of the location of MEC Davis Flat Corehole. When the corehole is drilled an accurate survey will be performed.

John Minor
P.O. Box 588
North Bend, OR 97459

License renewal: 12-31-04

N



Scale 1" = 1000'

REGISTERED
PROFESSIONAL
LAND SURVEYOR

OREGON
JULY 15, 1983
JOHN MINOR
2052

T26S

MEC DAVIS FLAT
INFORMATION HOLE



R13W

1720 IV SE
(CHARLESTON)

4797

4795

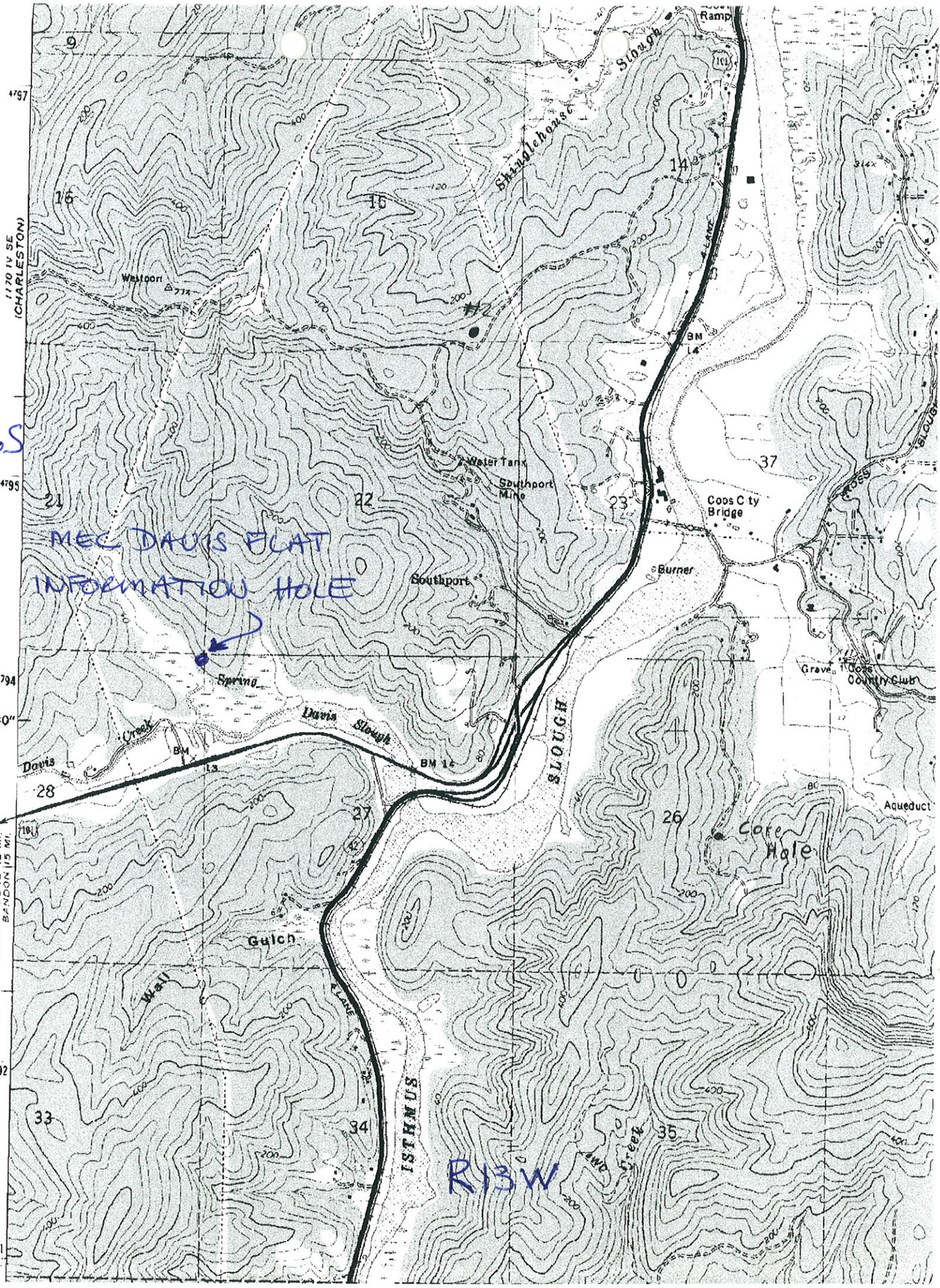
4794

17°30"

PORI ORFORD 42 MI
BANDON 115 MI

4792

4791
T 26 S



7-29-92

BA

2-ACBC

17-19B-63



MEC DAVIS
FLAT
INFORMATION
HOLE