

EST

15

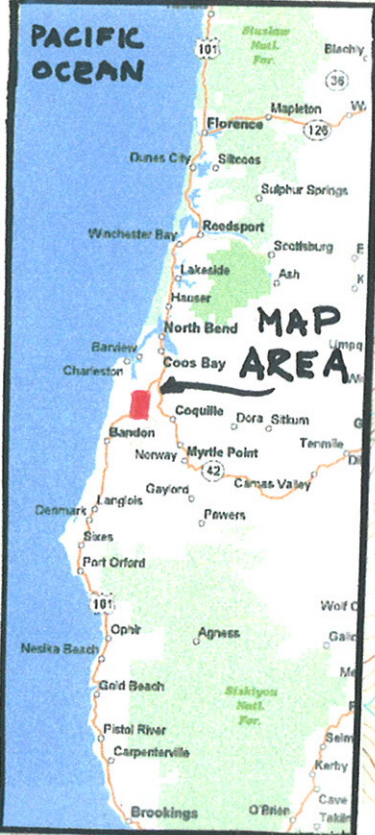
C O O S C O U N T Y

TO COOS BAY



TO CHARLESTON

F O R E S T



MAP AREA

MEC RADIO HILL NOS. 1-5

Radio Tower  
Radio Towers  
Radio Facility

TO COQUILLE

TO BANDON

BM 507

1 Mile

RECEIVED

SEP - 7 - 2015

7275

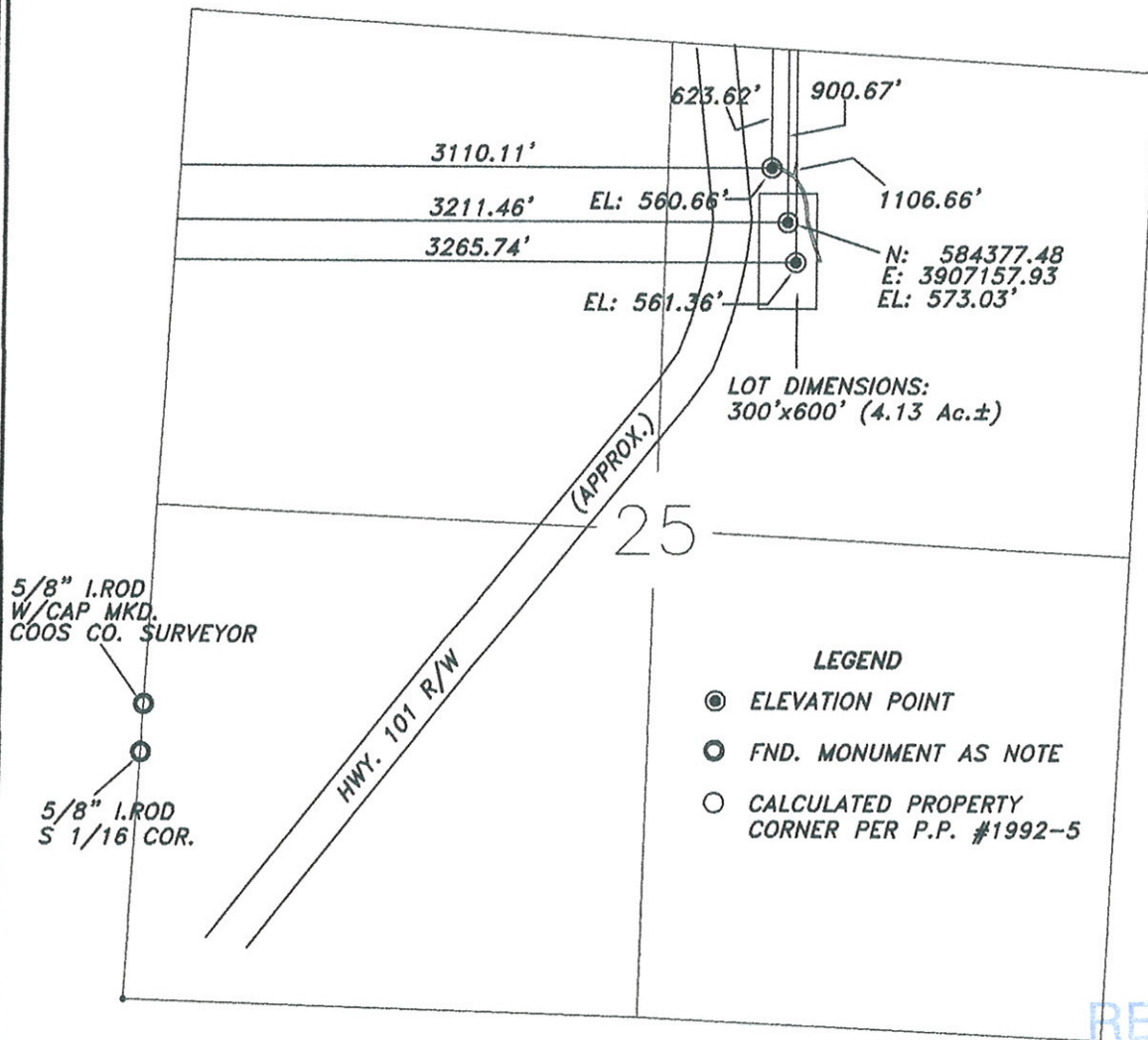
7285

R14W R13W

BOGS

119

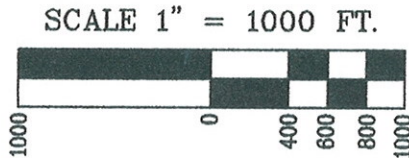
**MEC RADIO TOWER HILL  
PRELIMINARY SITE**  
LOCATED IN  
T.27S., R.14W., SECTION 25, W.M.  
COOS COUNTY, OREGON



RECEIVED  
SEP - 7 2005  
MLRR

**REGISTERED  
PROFESSIONAL  
LAND SURVEYOR**

**OREGON**  
June 30, 1995  
**Jerry Lee Estabrook**  
2703  
EXPIRES 12/31/05



**Stuntzner Engineering  
& Forestry, L.L.C.**

**ENGINEERING • LAND SURVEYING • FORESTRY  
PLANNING • WATER RIGHTS**

705 South 4th St. Phone: (541) 267-2872  
Post Office Box 118 Coos Bay, Oregon 97420 Fax: (541) 267-0588

Drawn By: Evin Stingley	Date: Aug. 18, 2005
Checked By: Jerry Estabrook	Drawing No.: 05-238 ph301
Designed By: FM	Revised:
Job Name: Radio Tower Hill	Sheet 1 of 1

TO COOS BAY

TO CHARLESTON

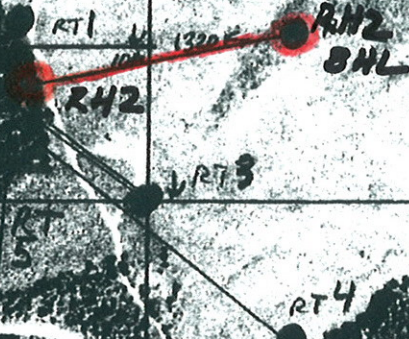
SEC 24

SEC 19

SEC 25

SEC 30

COOS COUNTY  
BEAVER  
HILL  
DISPOSAL  
FACILITY



US HIGHWAY  
101

TO  
COPPER

TO BANDON

MEC RADIO HILL #2  
SURFACE ; BHL

RECEIVED

SEP - 6 2005

MLRR