

C O O S C O U N T Y

F O R E S T

TO COOS BAY



TO CHARLESTON

MEC
RADIO
HILL NOS.
1-5

Beaver Hill
Radio Towers
Radio Facility

TO COQUILLE

TO BANDON

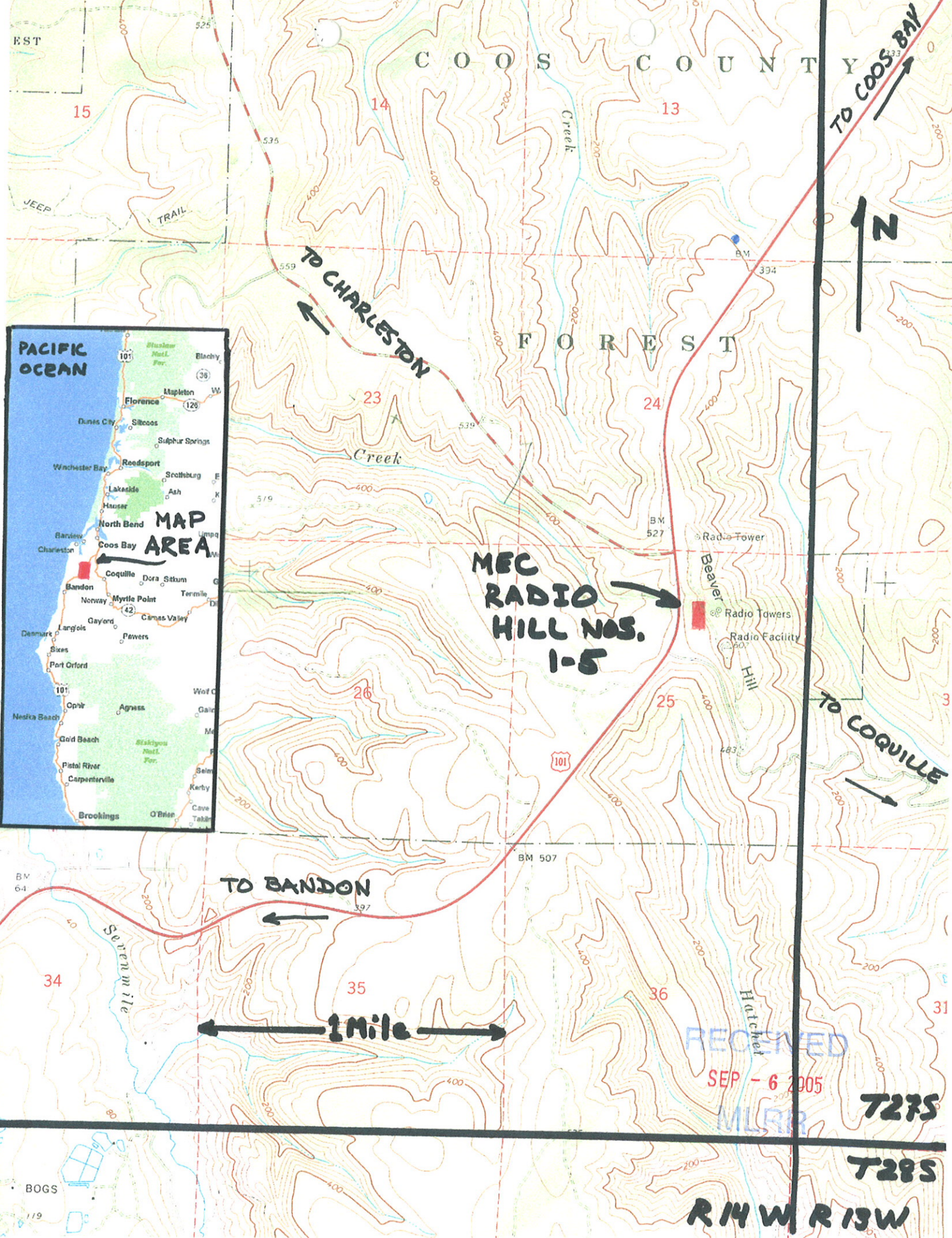
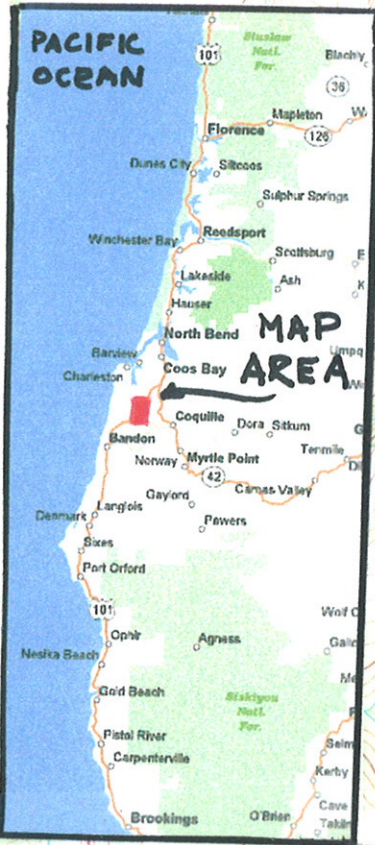
1 Mile

RECEIVED
SEP - 6 2005
MLRR

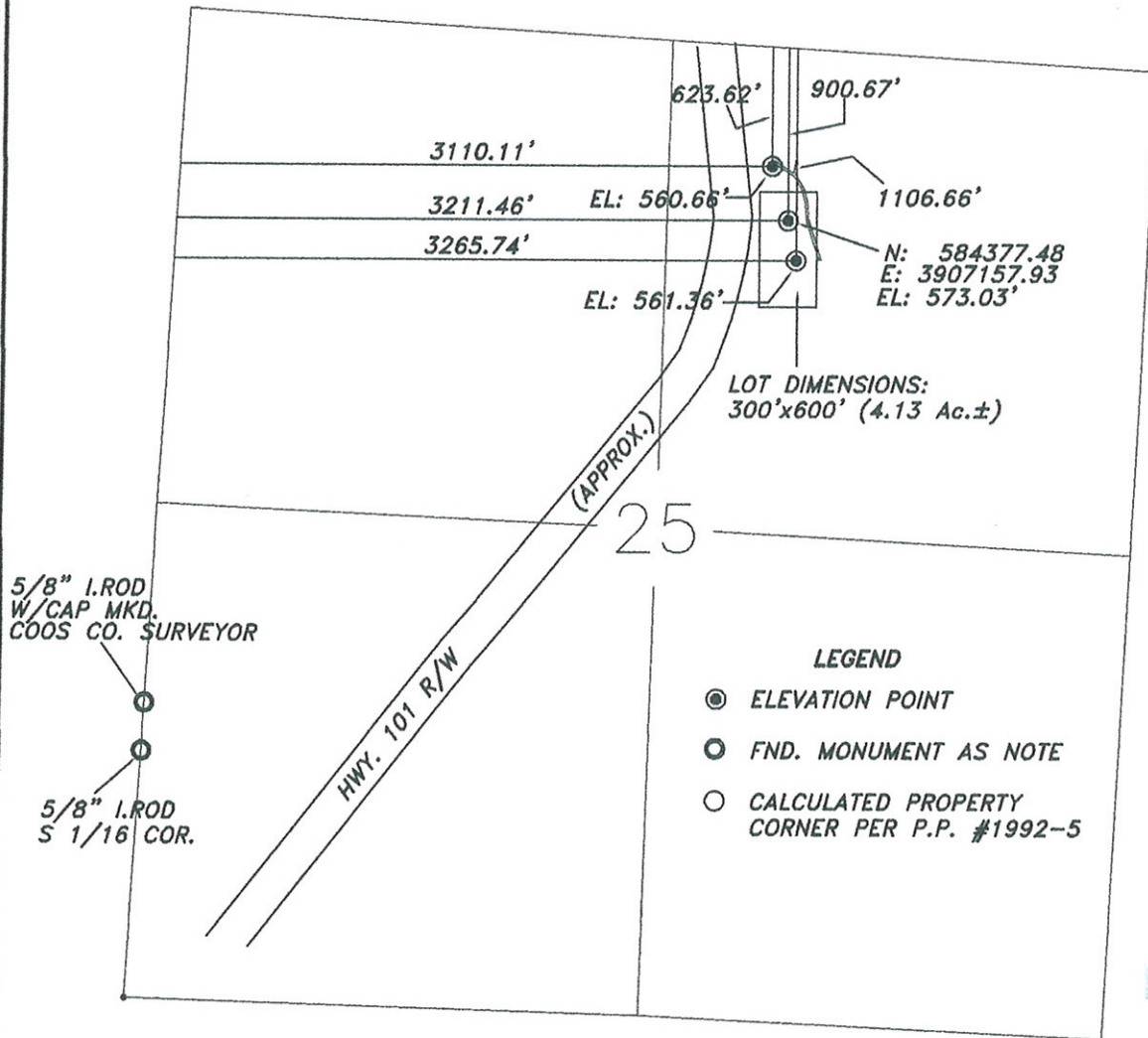
T275

T285

R14W R13W



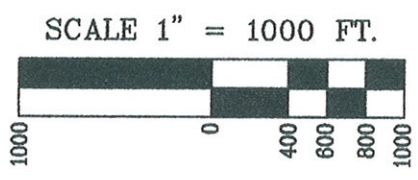
**MEC RADIO TOWER HILL
PRELIMINARY SITE**
LOCATED IN
T.27S., R.14W., SECTION 25, W.M.
COOS COUNTY, OREGON



RECEIVED
SEP - 6 2005
MLRR

**REGISTERED
PROFESSIONAL
LAND SURVEYOR**

OREGON
June 30, 1995
Jerry Lee Estabrook
2703
EXPIRES 12/31/05



**Stuntzner Engineering
& Forestry, L.L.C.**

**ENGINEERING • LAND SURVEYING • FORESTRY
PLANNING • WATER RIGHTS**

705 South 4th St. Phone: (541) 267-2872
Post Office Box 116 Coos Bay, Oregon 97420 Fax: (541) 267-0588

| | |
|-----------------------------|--------------------------|
| Drawn By: Evin Singley | Date: Aug. 18, 2005 |
| Checked By: Jerry Estabrook | Drawing No: 05-238 ph301 |
| Designed By: FM | Revised: |
| Job Name: Radio Tower Hill | Sheet 1 of 1 |

TO COOS BAY

TO CHARLESTON

SEC 24

SEC 19

SEC 25

SEC 30

COOS COUNTY
BEAVER HILL
DISPOSAL
FACILITY



N

US HIGHWAY
101

TO
COPPER

TO BANDON

MEL RADIO HILL #3
SURFACE ; BHL

RECEIVED

SEP - 6 2005

MLRR