

UNED  
015  
P-093  
B-090  
#1

**SCUMBERGER**  
SONNE 100  
SCUMBERGER WELL SURVEYING CORPORATION  
1800 W. 10th St.  
SANDRIE, OREGON

COMPANY: UNION OIL CO. OF CALIF.  
WELL OCS: P-093  
WELL: JREBE #1  
FIELD: STONEWALL BANK  
COUNTY: CLATSOP  
STATE: OREGON

LOCATION: QUARTER 2, SECTION 19, T. 36 N., R. 12 E., S. 32 E.  
COUNTY: CLATSOP  
STATE: OREGON  
Remnant Down: MLLW  
Drilling Measured from: 0  
Permit No.: 9-11-65  
Date: 5-2-65

Depth: 710  
Bottom: 704  
Log Interval: 704  
Log Interval: 704

Depth	710	233.4	560.0
Bottom	704	233.4	560.0
Log Interval	704	233.4	560.0
Log Interval	704	233.4	560.0

REMARKS: Run 1, Zero pt. corr. for B side. Run 2, No hole, sliper run.

Scale Changes	Type Log	Depth	Scale Up Hole	Scale Down Hole

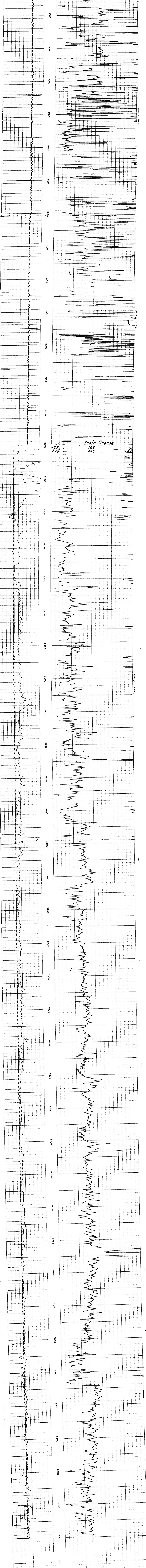
Changes in Mud Type or Additional Samples	Date	Sample No.	Depth	Type	Fluid in Hole

Equipment Data	Tool Position	Other
Run No. 1	BSC	CENTERED
Run No. 2	BSC	CENTERED
Run No. 3	BSC	CENTERED

C.D.: S.O.  
Equip. Used: CARLISLE A 72 A 76 A 80  
PANEL No. A 72 A 76 A 80  
SONDE No. A 80 A 80 A 80

REMARKS: Run 2, Sliper. Two sets of equipment polarized. Formation unconsolidated. Slings used. Near surface senders used. No centralizers used. Bad hole.

Velocity (feet per second) 1000/000  
Interval Transit Time (microseconds per foot)



SPONTANEOUS-POTENTIAL 100 MILLIVOLTS  
INTERVAL TRANSIT TIME MICROSECONDS PER FOOT  
CALIPER HOLE DIAM. IN INCHES