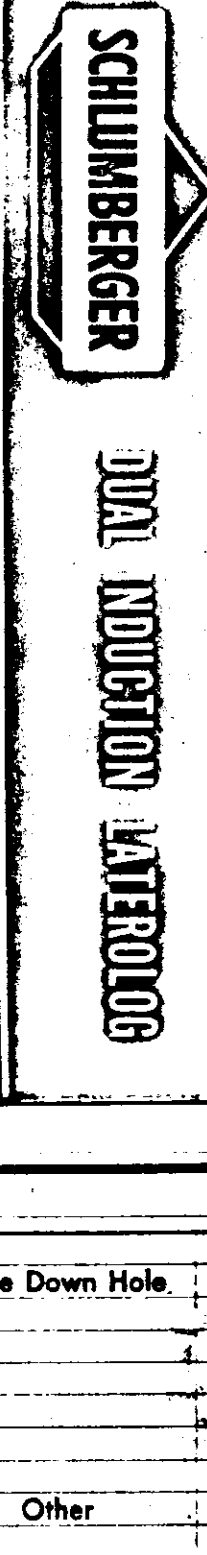


5-10-68



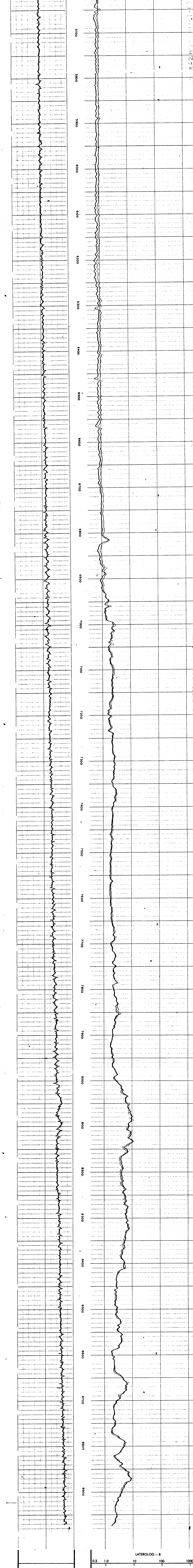
COUNTY OFFSHORE  
 FIELD NEWPORT  
 COMPANY UNION OIL COMPANY OF CALIFORNIA  
 WELL GREBE NO. 1 DEEPENING OCS P 093  
 LOCATION NEWPORT TERMINATED  
 COUNTY OFFSHORE STATE OREGON  
 X=975, 928  
 Y=327, 172  
 Permanent Datum RT Elev. RT 68  
 Drilling Measured From RT 68 ft. Above Perm. Datum  
 Date 10-2-68  
 Log No. 8970  
 Depth Interval 8970-7700  
 Form Log Interval 8970-7700  
 Change - Driller 7 S&L SRT3  
 Bit Size 6 3/4  
 Type Fluid in Hole LIQUID  
 NOTED LEVELS  
 Dens. Visc. SULENITE  
 Fluid Loss 9 5 2 ml  
 Source of Samples CIRCULATED  
 R. @ Meas. Temp. 0.47 @ 80°F  
 R. @ Meas. Temp. 0.72 @ 71°F  
 Source of Mud H N  
 Mud. Rec. Temp. 0.21 @ 180°F  
 Equip. Location C60 S&L  
 Recorded By BRATISLAV  
 Witnessed By

REMARKS

Changes in Mud Type or Additional Samples	Type Log	Depth	Scale Changes	Scale Up Hole	Scale Down Hole
Date Sample No.					
Depth - Driller					
Type Fluid in Hole					
Dens. Visc. Fluid Loss					
Source of Sample					
R. @ Meas. Temp.					
R. @ Meas. Temp.					
Source R. @ Meas. Temp.					
R. @ Meas. Temp.					
R. @ Meas. Temp.					

C. @ NOT USED S.O.: ZERO  
 Equip. Used Cart. No. DIC-A 293  
 Panel No. D-1-A 31  
 Sonde No. D-1-A 45  
 IAP No. D-197  
 SRR =

Check one, filling in blanks where applicable:  
 Surface determined sonde errors used for ILM and ILD.  
 ILM and ILD sonde errors corrected for \_\_\_\_\_ inch  
 Sonde signal set at 10 inch level at depth of \_\_\_\_\_ feet.  
 ILM and ILD zeros set in hole at depth of \_\_\_\_\_ feet.



SPONTANEOUS-POTENTIAL millivolts	DEPTHS	RESISTIVITY ohms - m <sup>2</sup> /m
		LATEROLOG - 8
		MEDIUM INDUCTION LOG
		DEEP INDUCTION LOG
		RESISTIVITY ohms - m <sup>2</sup> /m

COMPANY UNION OIL COMPANY OF CALIFORNIA  
 WELL GREBE NO. 1 DEEPENING OCS P 093  
 FIELD NEWPORT  
 COUNTY OFFSHORE STATE OREGON  
 SWSC FR 8970  
 SWSC TD 8974  
 DRLR TD 9050  
 Elev. RT 68  
 OF  
 GL 0