

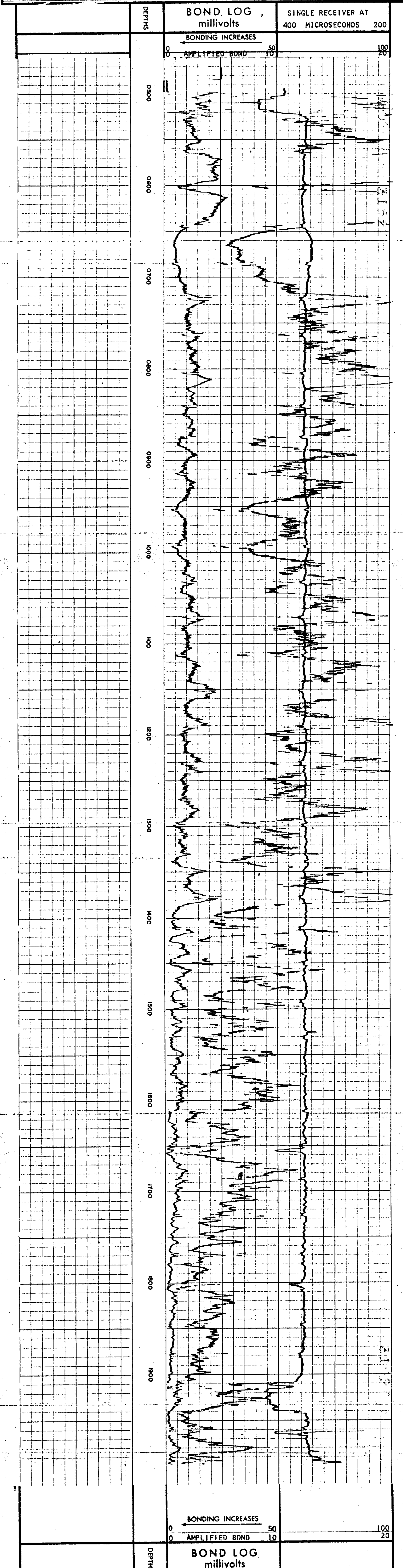
005
0130
F
W
No.

SCHUMBERGER
CEMENT BOND LOG

COUNTY OFFSHORE		FIELD or LOCATION WEST HECETA		WELL OCS-P-0130 FULMAR NO. 1	
COMPANY UNION OIL COMPANY OF CALIFORNIA		WELL OCS-P-0130 FULMAR NO. 1		TERMINATED	
COUNTY OFFSHORE		STATE OREGON		OIL SERVICE: CBL (FDL, SL, COM, GR, I-ES)	
LOCATION X=910, 394 EAST		Y=899, 300 NORTH		LAMBERT COORDINATES, OREGON SOUTH	
DATE 7-12-66		PERMANENT DATUM MLLW		Elev. R T 68.0'	
DRILLING MEASURED FROM RI		Elev. 68 Ft. Above Perm. Datum		D.F. MLLW	
DEPTH - DRILLER 2001		TYPE DRILL FLUID FRESH		F	
DEPTH - LOGGER 1996		MAX. REC. TEMP.		500	
DEPTH - LOG INTERVAL 500		EQUIP. LOCATION		C-60 SACTO	
OPEN HOLE SIZE 5"		RECORDED BY		HODGES	
CASING REC. SIZE 4 1/2"		WITNESSED BY		LANDIS	
PROD. STRING 11 3/4"		GRADE		ST & C	
PRIM. STRING 11 3/4"		TYPE JOINT		0	
VAL. OF CEMENT NA		SURFACE PROTECTION		Liner	
ADDITIVE		PRODUCTION			
RETARDER					
Wt. of slurry					
Water loss					
Type fluid in csg					
Fluid wt					

PRIMARY CEMENTING PROCEDURE			Equipment Data	
Hour - date	Hours from start of operation		Type centralizers	SPRING
Started pumping cement			Logging speed	3000 /HR
Release pressure			Bias: Max.	-Min.
Start Cement Bond Log	315 7/12/66	0	Cartridge Type	SLC-A
Finish Cement Bond Log	500 7/12/66	1 3/4 HOURS	Cartridge No.	173
Preceding fluid	Volume bbls.	Pipe reciprocated during Pumping:	Yes	No
Cement pumped	bbls./minute	Pipe reciprocated after plug down:	Yes	min., No

SQUEEZE JOB DETAIL				Centralizer Depths	Scratcher Depths
Squeeze number	1	2	3		
Date					
Depth interval					
Type cement					
Volume of cement					
Additive					
Retarder					
Weight of slurry					
Preceding fluid					
Breakdown pressure					
Max. pressure-stage 1					
" " " 2					
" " " 3					
Final maximum pressure					
Started pumping cement					
Released pressure					
Start CBL					
Finish CBL					
AVERAGE WELL DRIFT:	from to	from to	from to		
REMARKS					



COMPANY UNION OIL COMPANY OF CALIFORNIA	SWSC FR 1996
WELL OCS-P-0130 FULMAR NO. 1	SWSC TO 2001
FIELD WEST HECETA	DRIR TO 2001
COUNTY OFFSHORE	STATE OREGON
	Elev. R T 68.0'
	D. MLLW