

HALLIBURTON
EXCELL
27-1100
QUAD COMBO
HRI/BCS/SDL/DSN

COMPANY: NORTHWEST NATURAL GAS
WELL: OM 23C-11-65
FIELD: MIST (BRUER POOL STORAGE)
COUNTY: COLUMBIA STATE: OR
WELL: OM 23C-11-65
COMPANY: NORTHWEST NATURAL GAS
WELL: OM 23C-11-65
FIELD: MIST (BRUER POOL STORAGE)
COUNTY: COLUMBIA STATE: OR
WELL: OM 23C-11-65
COMPANY: NORTHWEST NATURAL GAS
WELL: OM 23C-11-65
FIELD: MIST (BRUER POOL STORAGE)
COUNTY: COLUMBIA STATE: OR

Log Time: 2005-08-20 05:23:18

Service Ticket No	388646	API Serial No	036-036-02261	FEET	111.00	X	1.0
CHANGE IN W.C. TYPE OR ACCUM. SAMPLES							
Date Sampled	2005-08-20	Scale	2005-08-20	Scale	2005-08-20	Scale	2005-08-20
Dip	0	Scale	2005-08-20	Scale	2005-08-20	Scale	2005-08-20
Type Fluid	Oil						
PH / Fluid Loss							
Source of Sample	WELL						
Rim @ Meas Temp	430	@ 53 F					
Rim @ Meas Temp	860	@ 53 F					
Source Rmt Meas	MEAS	MEAS					
Rim @ BHT	2819	@ 110 F					
Rim @ BHT	032	@ 110 F					

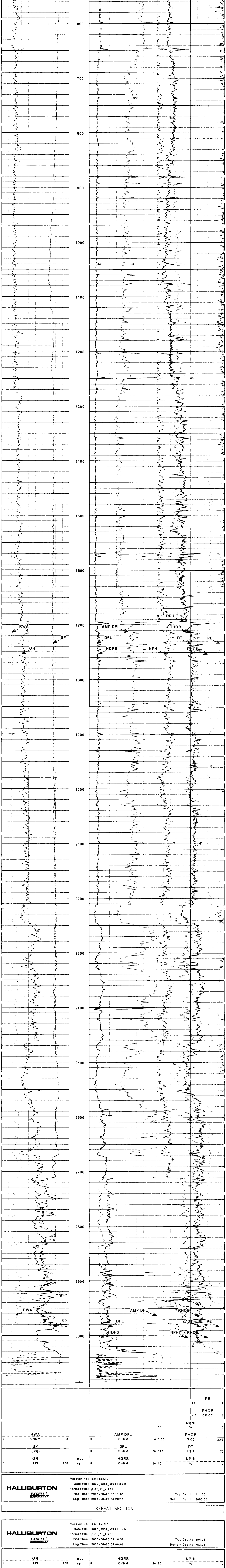
Run No	ONE	Run No	ONE	Run No	ONE	Run No	ONE
Serial No	A-80	Serial No	4607264	Serial No	1727571	Serial No	1727571
Mode No	NGRT	Mode No	305B BCS	Mode No	SDLT-DA	Mode No	DSNT-X
Diameter	3.625	No. of Casing	TWO	Diameter	5.500	Diameter	3.625
Detector Model No	432	Spacing	2 FEET	Log Type	GAM-3AM	Log Type	NEU-NEU
Type	SCINT	Source	CS-13	Source	CS-13	Source Type	AM24-BE
Wavelength	4.00	LSA TV [N]	NO	Serial	294300	Serial No	294300
Distance to Source	11.0	FWDA TV [N]	NO	Serial	294300	Serial No	294300

Run No	ONE	From	3086	To	464	Stand	48	L	150	R	175	L	75	R	55	L	65	R	265	L	265	R	80	L	0	R	0
API	API	API	API	API	API	API	API	API	API	API	API	API	API	API	API	API	API	API	API	API	API	API	API	API	API	API	API

ANNULAR HOLE VOLUME CALCULATED USING 5.50" CASING.
HRIID-BCSD-SDLT-DSNT-NGRT IN COMBINATION.

CREW: M. EMERSON, D. BRIGHT, RIG: TAYLOR NO. 9.

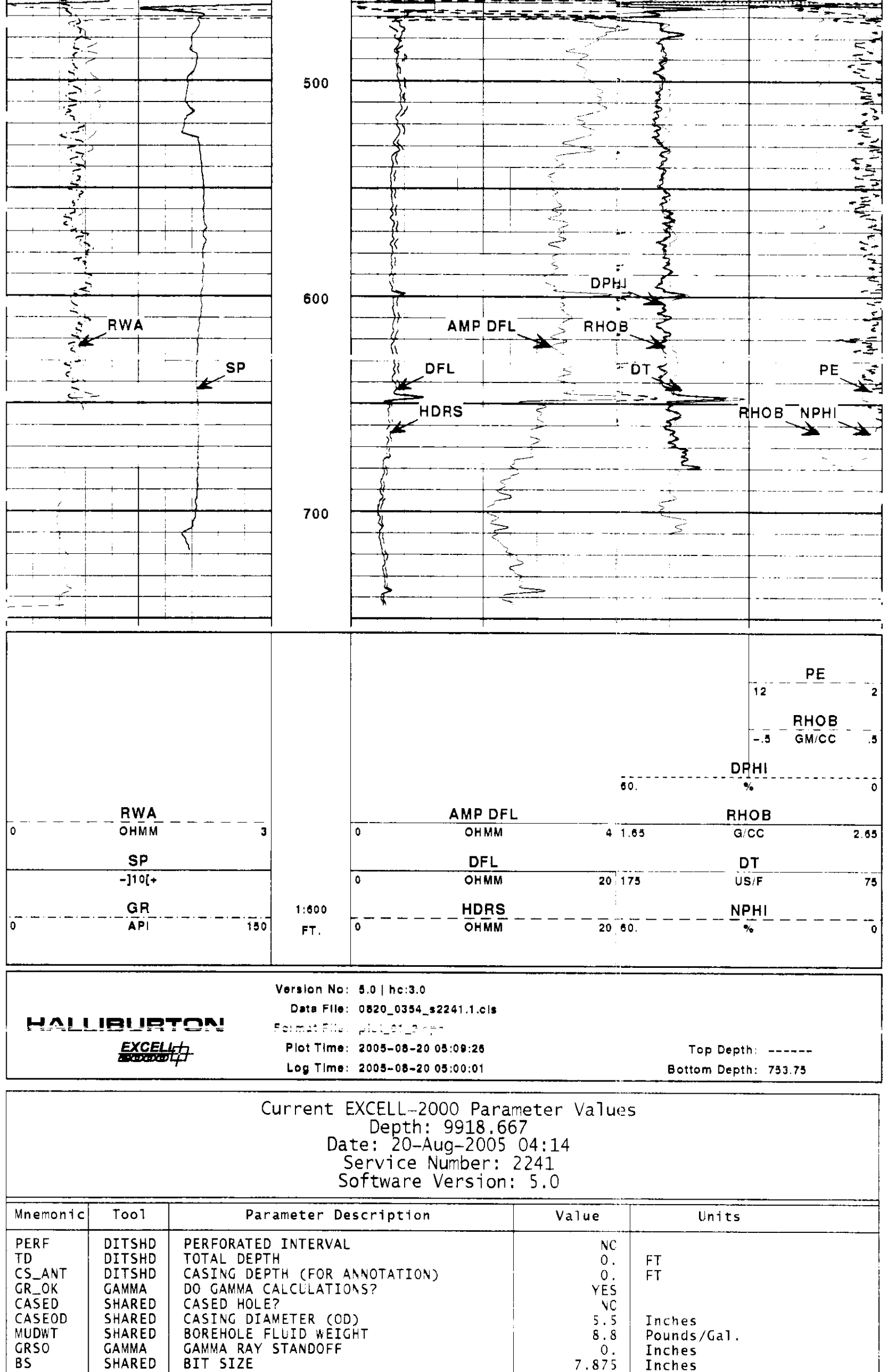
Version No: 5.0 | hc:3.0
Data File: 0820_0354_82241_3.cis
Format File: plot_01_2.apc
Plot Time: 2005-08-20 07:12:10
Log Time: 2005-08-20 05:23:18
Top Depth: 111.00
Bottom Depth: 3083.50



Version No: 5.0 | hc:3.0
Data File: 0820_0354_82241_3.cis
Format File: plot_01_2.apc
Plot Time: 2005-08-20 05:09:26
Log Time: 2005-08-20 05:23:18
Top Depth: 111.00
Bottom Depth: 3083.50

REPEAT SECTION

Version No: 5.0 | hc:3.0
Data File: 0820_0354_82241_1.cis
Format File: plot_01_2.apc
Plot Time: 2005-08-20 05:10:51
Log Time: 2005-08-20 05:23:18
Top Depth: 394.25
Bottom Depth: 753.75



Version No: 5.0 | hc:3.0
Data File: 0820_0354_82241_1.cis
Format File: plot_01_2.apc
Plot Time: 2005-08-20 05:09:26
Log Time: 2005-08-20 05:00:01
Top Depth: 111.00
Bottom Depth: 753.75

Current EXCELL-2000 Parameter Values
Depth: 9918.667
Date: 20-Aug-2005 04:14
Service Number: 2241
Software Version: 5.0

Mnemonic	Tool	Parameter Description	Value	Units
PERF	DITSHD	PERFORATED INTERVAL	NC	
TD	DITSHD	TOTAL DEPTH	0.0	FT
CS_ANT	DITSHD	CASING DEPTH (FOR ANNOTATION)	0.0	FT
GR_OK	GAMA	DO GAMA CALCULATIONS?	YES	
CASED	SHARED	CASED HOLE?	NC	
CASED	SHARED	CASING DIAMETER (OD)	5.5	Inches/Gal.
WUDT	SHARED	BOREHOLE FLUID WEIGHT	8.3	Inches
GRSD	GAMA	GAMA RAY STANDOFF	0.0	Inches
DSN_OK	SHARED	BIT SIZE	7.875	Inches
BS	DSNT_X	DO DSNT_X CALCULATIONS?	NO	
DRILL	DSNT_X	TPL - NEUTRON IN SLEEVE?	NO	
BADHOL	DSNT_X	DO DSNT_X BAD HOLE CORRECTION	NO	
NLITE	DSNT_X	NEUTRON LITROD?	NO	
DSNDS	DSNT_X	DSNT_X STANDOFF	0.0	Inches
DSNPRS	DSNT_X	DSNT_X PRESSURE CORRECTION	NO	
VLDTUP	DSNT_X	IS DSNT_X TEMPERATURE VALID?	YES	
ANHWOK	SOL_DA	DO SOL CALCULATIONS?	YES	
EVLOK	SOL_DA	DO SOL EVR CALCULATIONS?	YES	
AIR	SOL_DA	AIR FILLED BOREHOLE?	NO	
LOGC	SOL_DA	LOGGING CAL BLOCKS?	NO	
SOLTC	SOL_DA	DO MICRO-LOG CALCULATIONS?	YES	
MUDT	SOL_DA	MUD CORRECTION TYPE?	NONE	
HRIIDSP	SHARED	SPIKE REDUCTION CORRECTION	2.65	Grams/CC
RHOFL	SHARED	FLLID DENSITY	100.0	Grams/CC
CAL_OK	CAL_DA	DO CALIPER CALCULATIONS?	YES	
ARCHA	SHARED	ARCHIE A	0.81	
MLOGOK	MIC_SD	DO MICRO-LOG CALCULATIONS?	YES	
FWSTOK	BCS	DO FWT CALCULATIONS?	YES	
DTSHA	BCS	DELTA T SHALE	100.0	uSec/Ft.
UWRF	BCS	USE LIA MATRIX	33.0	uSec/Ft.
DTFL	BCS	USE L OR DT FOR POROSITY	189.0	uSec/Ft.
ARCHA	SHARED	ARCHIE A	0.81	
PSEL	SHARED	POROSITY SELECTION FOR F	4CLO	
USEFIX	BCS	USE MINIMUM FIXED THRESHOLD	NC	
USENOI	BCS	USE NOISE THRESHOLD FOR PICK	YES	
TDL_OK	TDLF	USE TDL DISPLAY CONTROLS?	NC	
HRI_OK	HRIDE	DO HRI INDUCTION CALCULATION?	YES	
NLITE	HRIDE	DO NEUTRON LITROD?	NO	
PYRITE	HRIDE	PYRITE SWITCH	NC	
CASING	HRIDE	CASING DEPTH	0.0	Feet
HRIIDSP	HRIDE	SPIKE REDUCTION CORRECTION	2.65	OHMM
HRIIC	HRIDE	HRI TEMPERATURE CORRECTION	NONE	
CTEM	HRIDE	CONST TEMPERATURE	75.0	DEG F
BHT	HRIDE	BOTTOM HOLE TEMPERATURE	120.0	Degrees F.
TSURF	HRIDE	SURFACE TEMPERATURE	60.0	Degrees F.
BHD	HRIDE	BOTTOM HOLE DEPTH	3108.0	Feet
RMIIDSP	HRIDE	USE DIGITAL SP	100.0	
RMUD	HRIDE	MUD RESIST AT SURFACE (0=A1r)	1.429999	OHMM
TRW	HRIDE	TEMPERATURE OF MUD	63.0	DEG F
RRMIN	HRIDE	MINIMUM RESISTIVITY FOR MAP?	8.0	OHMM
RRMAX	HRIDE	MAXIMUM RESISTIVITY FOR MAP?	200.0	OHMM
XPHLOC	XP_RWA	CROSSPLOT SELECTION FOR XPOR	XPLT	

COMPANY: NORTHWEST NATURAL GAS
WELL: OM 23C-11-65
FIELD: MIST (BRUER POOL STORAGE)
COUNTY: COLUMBIA STATE: OR
QUAD COMBO: HRI/BCS/SDL/DSN

HALLIBURTON