

COMPANY: NORTHWEST NATURAL GAS

WELL: OM-32-22-65

FIELD: CALVIN CREEK GAS STORAGE

COUNTY: COLUMBIA STATE: OREGON

Platform Express Neutron/Density True Vertical Depth Log

Well: OM-32-22-65, Location: 1884.04 S & 1261.26 W FROM, Company: NORTHWEST NATURAL GAS

Log header table with columns for Run Number, Log Interval, Depth, and various log types.

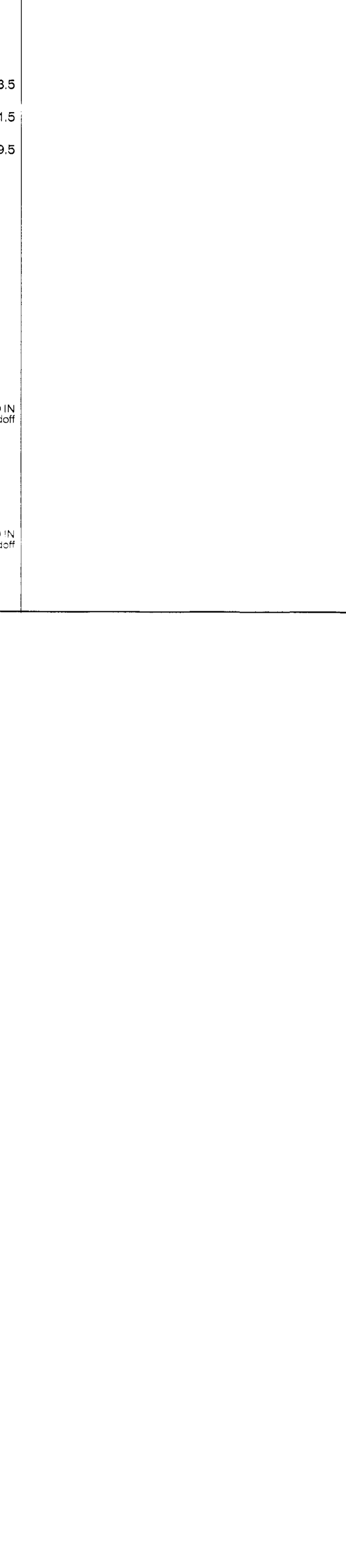
Log header table for Run 1 and Run 2, including service order numbers and logged intervals.

EQUIPMENT DESCRIPTION



Log header table for Run 1 and Run 2, including service order numbers and logged intervals.

EQUIPMENT DESCRIPTION

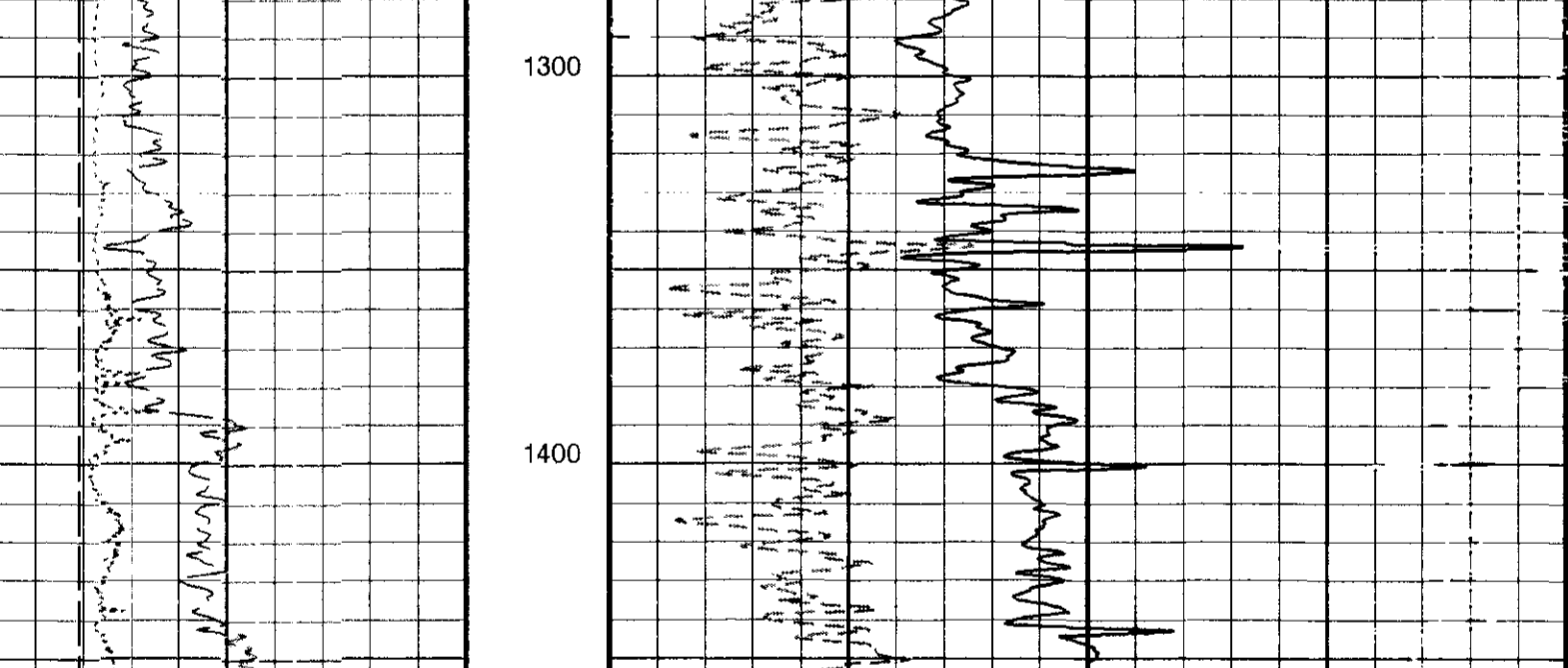
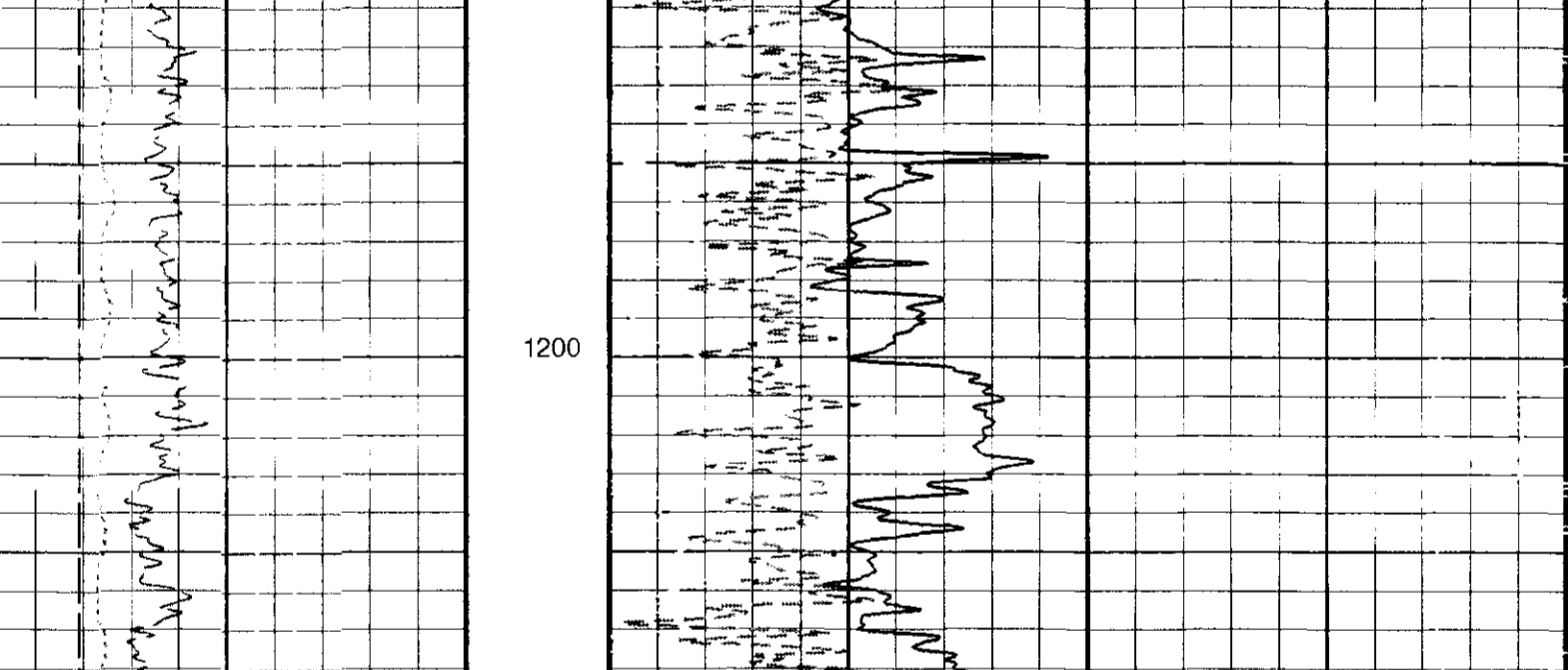
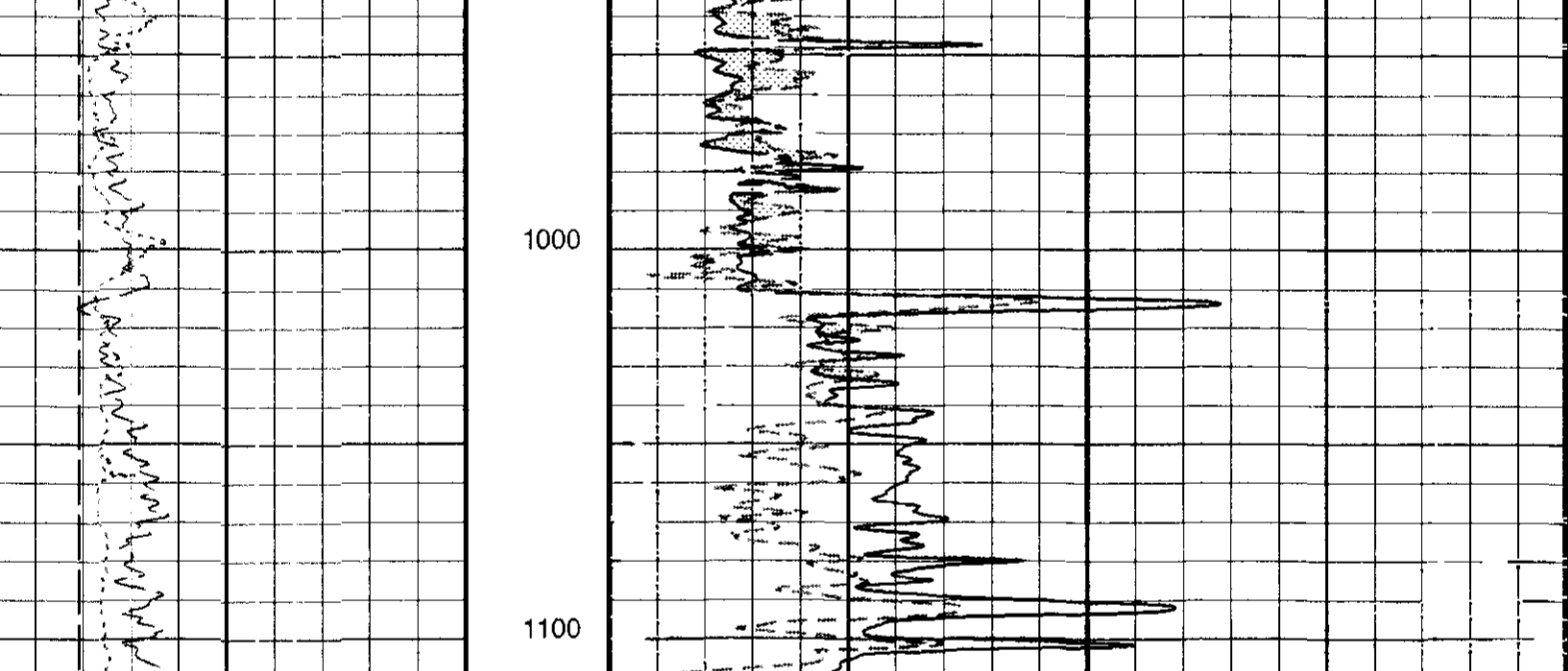
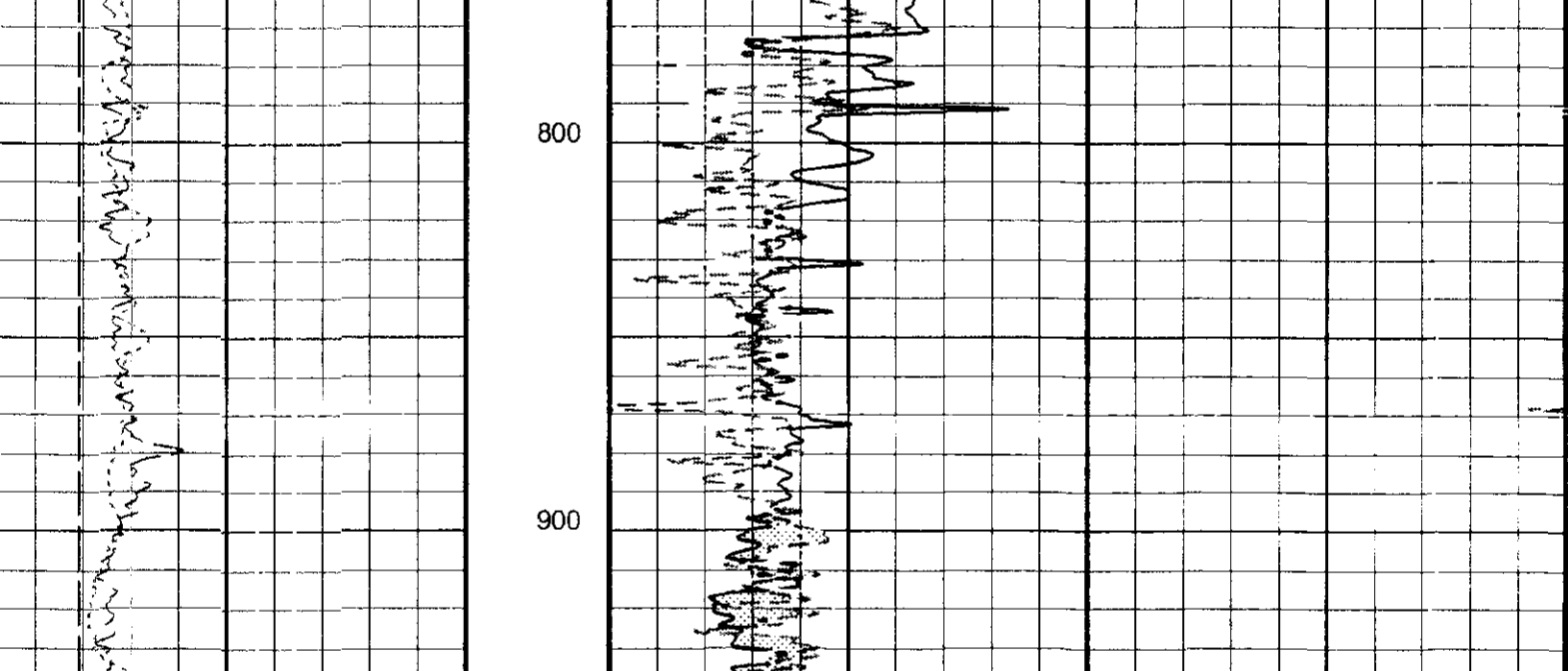
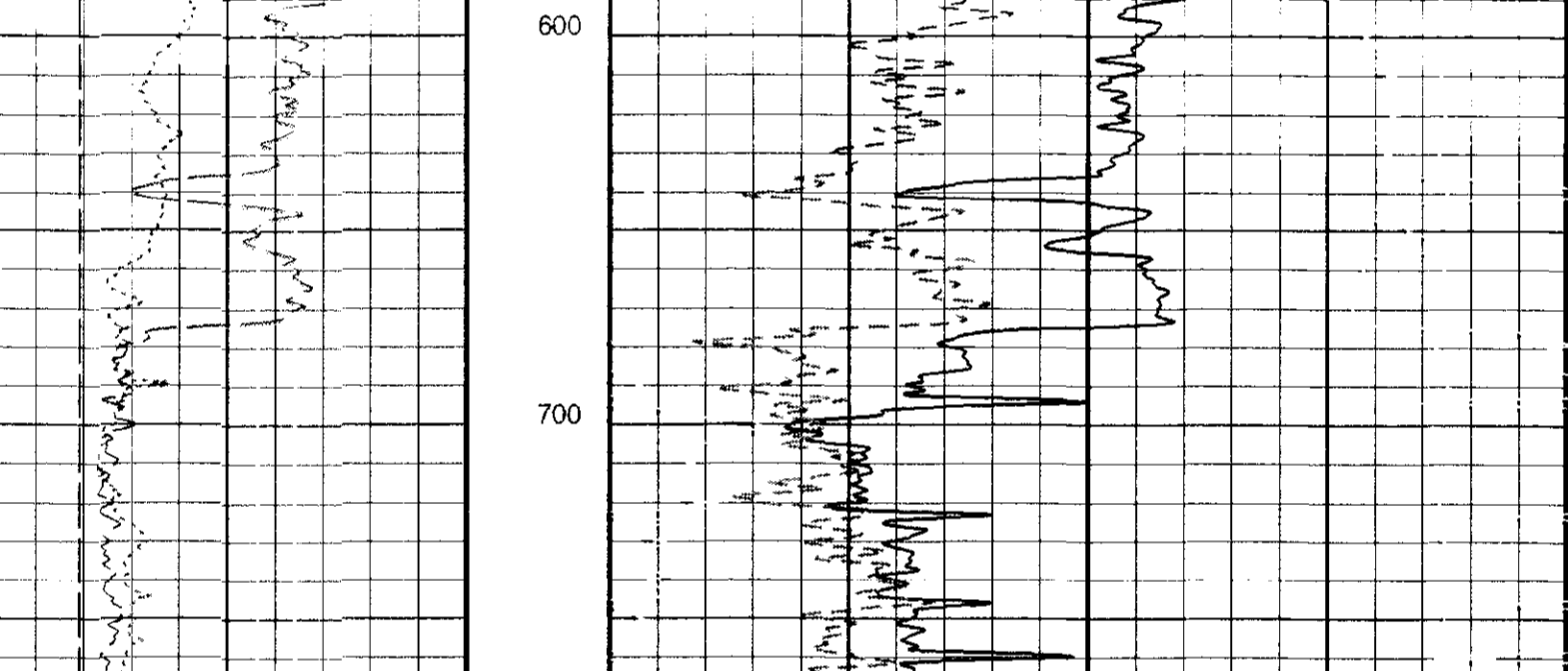
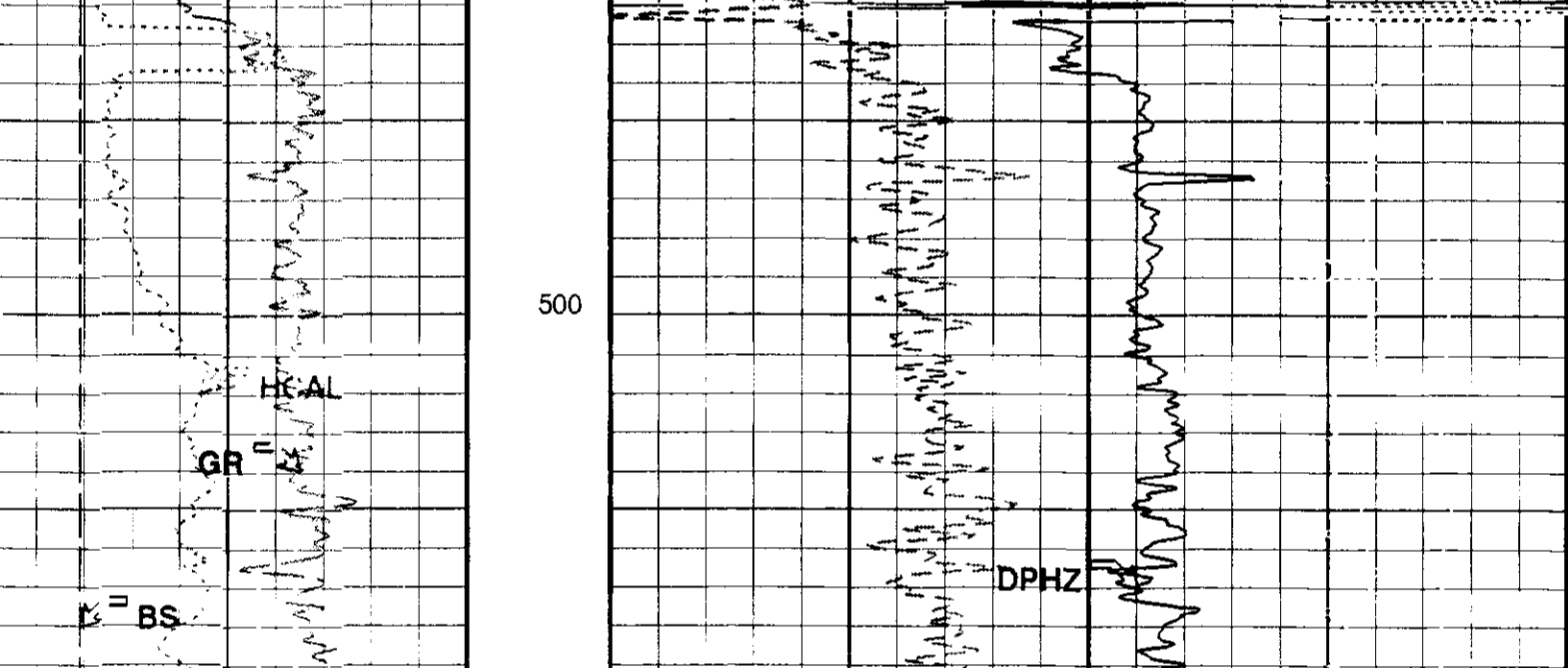


Input and Output DLIS Files table.

OP System Version: 8C1-205

PIP SUMMARY: Integrated Hole Volume Minor Pip Every 10 F3, Integrated Hole Volume Major Pip Every 100 F3, Integrated Cement Volume Minor Pip Every 10 F3, Integrated Cement Volume Major Pip Every 100 F3

Time Mark Every 60 s



PIP SUMMARY: Integrated Hole Volume Minor Pip Every 10 F3, Integrated Hole Volume Major Pip Every 100 F3, Integrated Cement Volume Minor Pip Every 10 F3, Integrated Cement Volume Major Pip Every 100 F3

Time Mark Every 60 s

AIT-H Answer Product Processing Summary. Data taken with tool # 112 (AHTNO)

Acquired data from HILTB-DTB. Borehole diameter and mud res. taken as input (see GCSE and GRSE parameters)

Tool is run in ECCENTERED mode with a tool stand-off of 1.00 IN. Bit Size is 7.88 IN.

Caliper (GCSE): HCAL Mud Resistivity (GRSE): AHME Temperature (GTSE): LINEAR\_ESTIMATE Porosity (FPHI): DPHZ

Surface Hole Temperature (SHT): 68.000 DEG F Bottom Temperature (BHT): 96.000 DEGF

Total Depth (TD): 2365.000 FT

Form Factor Exponent (EXFP): 2.000 Form Factor Numerator (FNUM): 1.000

Mud Filtrate Sample Resistivity (RMFS): 1.910 OHMM Mud Filtrate Sample Temperature (MFST): 70.000 DEGF

Resistivity Connate Water (RW): 1.000 OHMM

Playback Mode: NOFALL

Parameters table listing DLIS Name, Description, and Value for various log parameters.

OP System Version: 8C1-205

Speed Corrected - Depth Matched LOG

Input and Output DLIS Files table.

Directional Survey Manually-Entered Inclination Summary table showing Depth, Deviation, True Vertical Depth, and True Vertical Depth.

Bottom Log Interval table showing SCHLUMBERGER DEPTH, DEPTH DRILLER, DEPTH BUSHING, DRILL FLOOR, and GROUND LEVEL.