

DT SONIC Reconstructed TT

Repeat VS Field

Using the following logs:
FMS GH
FMS

COMPANY: NORTHWEST NATURAL GAS
WELL: OM 43A-22-65
FIELD: MIST
COUNTY: COQUIMA
STATE: OREGON
Date Logged: 3-JUN-2000 Date Processed: 06-JUN-2000
Well Location: 2441.82 North, 122.17 West From the SW Section 23
Elevations: KB: 1734.46ft DF: 1733.46ft GL: 862.23ft
API Number: 36-009-00352 Job Number:

FOLD HERE The well name, location and borehole reference data were furnished by the customer.

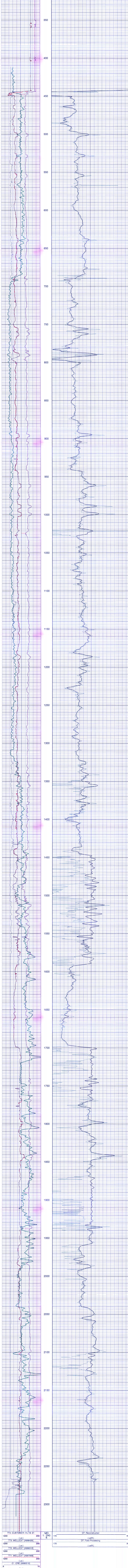
All interpretations are opinions based on inferences from electrical or other measurements and we cannot, and do not guarantee the accuracy or correctness of any interpretation, and we shall not be held responsible in the case of gross or willful negligence on our part, be liable or responsible for any loss, costs, damages or expenses incurred or sustained by anyone resulting from any interpretations made by any of our officers, agents or employees. These interpretations are also subject to Clause 4 of our General Terms and Conditions as set out in our current Price Schedule.

| | | | |
|-------------------|----------------------|---------------------------|------------------------|
| Field Recording: | Location: SACRAMENTO | Software Version: SC1-303 | Engineer: M.KHAN |
| Office Recording: | ICS Center: | Baseline: | Log Analyst: T.Quinlan |

Mud and Borehole Measurements:

| | | |
|---|-------------------------|------------------|
| Rm @ Measured Temperature: 1.1750cm.m @ 99degF | BIT: 212degF | Bitizer: 7.875in |
| Rmf @ Measured Temperature: 0.8690cm.m @ 90degF | Type Fluid in Hole: DMA | |
| Rmc @ Measured Temperature: 0.9040cm.m @ 82degF | Mud Density: 8.8lbm/gal | |

Remarks:
CASING: 8 5/8" 32 L BFT
SONIC RUN WITH CME-Z
MAXIMUM HOLE DEVIATION: 19.25 DEG AT 1305 FT



| | | |
|----------------|---|-----------------------------|
| Company: | NORTHWEST NATURAL GAS | |
| Well: | OM 43A-22-65 | |
| Field: | MIST | Schlumberger |
| County: | COQUIMA | |
| State: | OREGON | |
| Date Logged: | 3-JUN-2000 | Date Processed: 06-JUN-2000 |
| Well Location: | 2441.82 North, 122.17 West From the SW Section 23 | |
| Elevations: | KB: 1734.46ft DF: 1733.46ft GL: 862.23ft | |
| API Number: | 36-009-00352 | Job Number: |