

WELL OM 438-10
 COMPANY OREGON NATURAL GAS DEVELOPMENT CORPORATION
 AREA MIST FIELD
 LOCATION 2035'N & 802'W OF SE CORN SEC 10, T6N, R5W, W8AM
 COUNTY, STATE COLUMBIA, OREGON

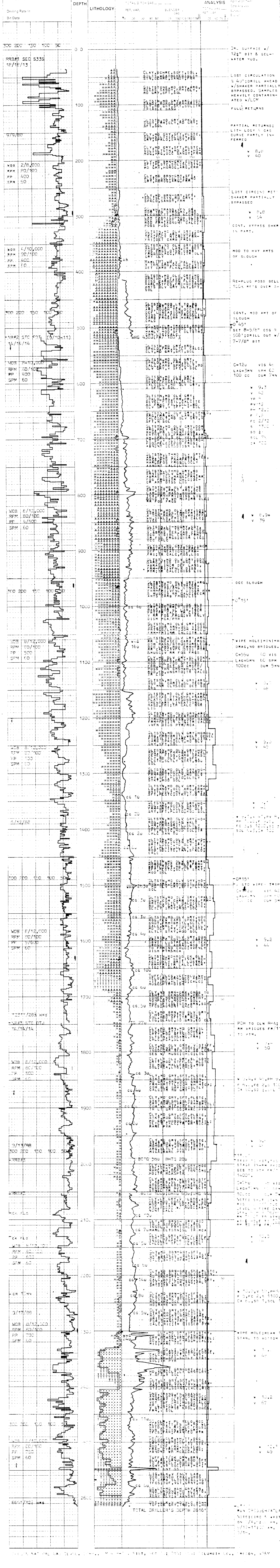
- W E G E -
WESTERN GEO-ENGINEERS
 "A SERVICE TO THE OIL AND GAS INDUSTRY"

LITHOLOGY SYMBOLS: Sand, Clay, Shale, Silt, Silty, Gravel, Lignite, Shale, Sandstone, Carbide Gas, Core Bit, Wire Line, Circulate Returns, Trip Gas, Connection Gas, Carbide Gas, Core Interval.

REMARKS: WELL ELEV. 726.11' KL. 739.51' SALINITY IN PPM CL FILTRATE IN CC/30 MM. GAS TRAP AGITATOR TYPE MUD GEL/DRISPAK (BEAVER DRILLING FLUIDS) TAYLOR DRILLING RIG #5

MUD DATA: W WEIGHT, V VISCOSITY, F FILTRATE, FC FILTER CAKE, SD SAND IN %
 LEGEND: S SALINITY, R RESISTIVITY, RF FILTRATE RESISTIVITY, BIT DATA: NB NEW BIT, RRB REUR BIT
 CORE BIT: CB, WLCB WIRE LINE CB, OTHER DATA: TG TRIP GAS, CG CONNECTION GAS, C CARBIDE GAS

DATE 9/6/88 to 9/17/88 DEPTH 60' to 2616' ENGINEERS J. DUVAL, B. PORTWOOD



OM 438-10
 OREGON NATURAL GAS DEVELOPMENT CORPORATION
 MIST FIELD
 2035'N & 802'W OF SE CORN SEC 10, T6N, R5W, W8AM
 COLUMBIA, OREGON