

# True Vertical Depth AIT - BHC

2 inch Display

A Matter of Schlumberger

Using the following logs: PEX BHC

COMPANY: NORTHWEST NATURAL GAS  
WELL: OM 43A-22-65  
FIELD: MIST  
COUNTY: COLUMBIA  
STATE: OREGON  
DATE LOGGED: 3-JUN-2000  
DATE PROCESSED: 6-JUN-2000  
WELL LOCATION: 2441.82' North, 122.17' West  
From the SW Section 23  
Elevations: KB: 1734.46ft DF: 1733.46ft GL: 862.23ft  
API Number: 36-009-00352 Job Number:

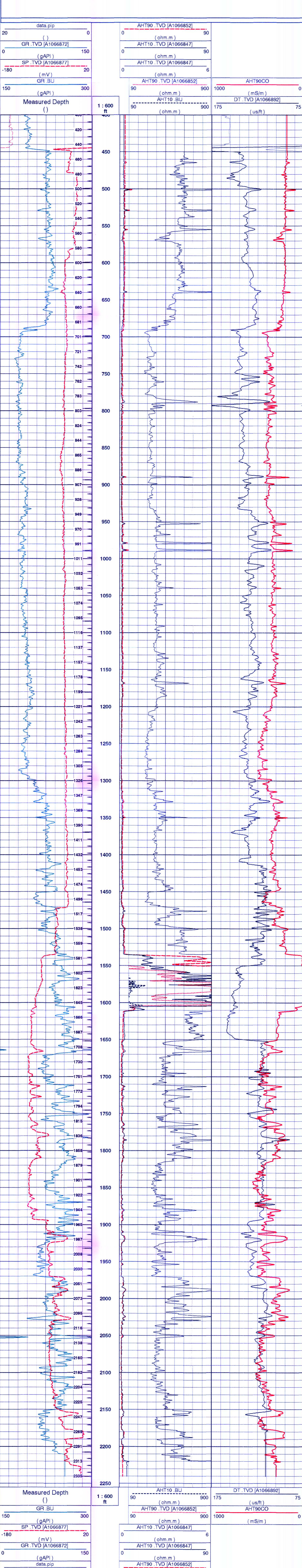
FOLD HERE The well name, location and borehole reference data were furnished by the customer.

All interpretations are opinions based on inferences from electrical or other measurements and we cannot, and do not guarantee the accuracy or correctness of any interpretation, and we shall not, except in the case of gross or willful negligence on our part, be liable or responsible for any loss, costs, damages or expenses incurred or sustained by anyone resulting from any interpretations made by any of our officers, agents or employees. These interpretations are also subject to Clause 4 of our General Terms and Conditions as set out in our current Price Schedule.

Field Recording: Location: SACRAMENTO Software Version: 9C1-303 Engineer: M.KHAN  
Office Recording: ICS Center: Baseline: Log Analyst: T.Quinian

Mud and Borehole Measurements:  
Rm @ Measured Temperature: 1.175ohm.m @ 99degF BHT: 212degF BitSize: 7.875in  
Rmf @ Measured Temperature: 0.869ohm.m @ 90degF Type Fluid in Hole: DMA  
Rmc @ Measured Temperature: 0.904ohm.m @ 92degF Mud Density: 8.8lbm/gal

Remarks:  
CASING 8 5/8" 32 LB/FT  
SONIC RUN WITH CME-Z  
MAXIMUM HOLE DEVIATION: 19.25 DEG AT 1305 FT



Company: NORTHWEST NATURAL GAS  
Well: OM 43A-22-65  
Field: MIST  
County: COLUMBIA  
State: OREGON  
Date Logged: 3-JUN-2000 Date Processed: 6-JUN-2000  
Well Location: 2441.82' North, 122.17' West  
From the SW Section 23  
Elevations: KB: 1734.46ft DF: 1733.46ft GL: 862.23ft  
API Number: 36-009-00352 Job Number:

