

COMPANY: REICHHOLD ENERGY CORPORATION

WELL: PAUL 434-32 RD-1

FIELD: MIST

COUNTY: COLUMBIA

STATE: OREGON

LOCATION: 741' N & 235' E OF THE SOUTH

SECT: 32 CORNER T1P1 7N

PERMANENT DATUM: GL

ELEV. OF PERM. DATUM: 614.0 F

LEG. MEAS. OF FLOW ADV. PERM. DATUM

DIAL. MEASURED FROM: KB

OTHER SERVICES-

DIL-STL

MFL

MFL

MFL

MFL

MFL

MFL

MFL

MFL

MFL

MFL

MFL

MFL

MFL

MFL

MFL

MFL

MFL

MFL

MFL

MFL

MFL

MFL

MFL

MFL

MFL

MFL

MFL

MFL

MFL

MFL

MFL

MFL

MFL

MFL

MFL

DATE: 17 SEP 84

RUN NO: 1

DEPTH-DRILLER: 2915.0 F

DEPTH-LOGGERS: 2898.0 F

BPM LOG INTERVAL: 2894.0 F

TOP LOG INTERVAL: 437.0 F

CASING-DRILLER: 437 F

CASING-LOGGER: 437 F

BIT SIZE: 7 7/8"

TYPE FLUID IN HOLE: GEL-LIGND
 DENSITY: 10.0 LB/BU
 VISCOSITY: 25.0 CP
 PH: 8.5
 FLUID LOSS: 6.2 CC
 SOURCE OF SAMPLE: FLOWLINE
 RM: 2.100 DHMM AT 83.0 DEGF
 RMF: 2.090 DHMM AT 74.0 DEGF
 RMC: 2.550 DHMM AT 71.0 DEGF
 SOURCE RMF/RMC: MEASURED/MEASURED
 RM AT BHT: 1.834 DHMM AT 96.0 DEGF
 RMF AT BHT: 1.643 DHMM AT 96.0 DEGF
 RMC AT BHT: 1.931 DHMM AT 96.0 DEGF

TIME CIRC. STOPPED: 1600 9-17
 TIME LOGGER ON BTH: 1830

MAX. REC. TEMP: 96.0 DEGF

LOGGING UNIT NO: 8178
 LOGGING UNIT LOC: SACRAMENTO
 RECORDED BY: R. BEATLEY
 WITNESSED BY: M. ALGER/T. THOMAS

REMARKS:
 PERIODICALLY, SONIC CYCLE SKIPS ABOVE 1200' DUE TO UNCONSOLIDATED SANDS AND WASHED OUT HOLE.

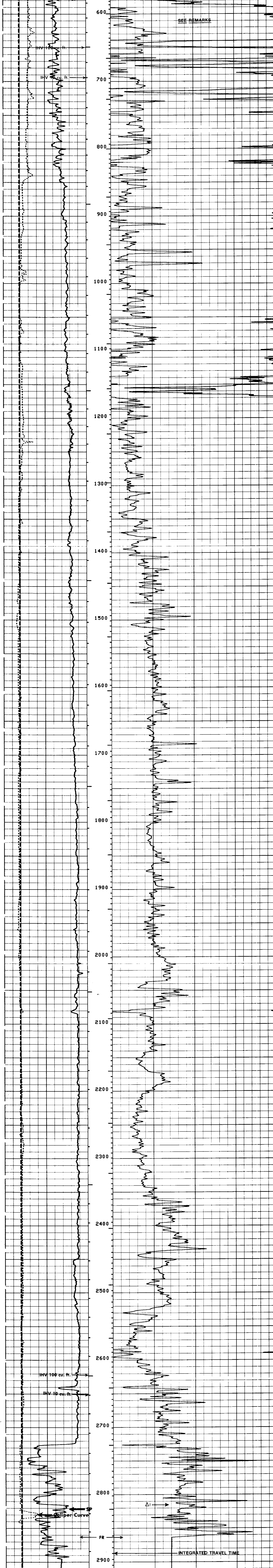
EQUIPMENT NUMBERS-

DIS 1422 DIC 342 SLS RC 236 SLC FA 1589
 MCD B 1502 IEM BD 686 SLM DA 1281

ALL INTERPRETATIONS ARE OPINIONS BASED ON INFERENCES FROM ELECTRICAL OR OTHER MEASUREMENTS AND WE CANNOT, AND DO NOT GUARANTEE THE ACCURACY OR CORRECTNESS OF ANY INTERPRETATIONS, AND WE SHALL NOT, EXCEPT IN THE CASE OF GROSS OR WILLFUL NEGLIGENCE ON OUR PART, BE LIABLE OR RESPONSIBLE FOR ANY LOSS, COSTS, DAMAGES OR EXPENSES INCURRED OR SUSTAINED BY ANYONE RESULTING FROM ANY INTERPRETATION MADE BY ANY OF OUR OFFICERS, AGENTS OR EMPLOYEES. THESE INTERPRETATIONS ARE ALSO SUBJECT TO OUR GENERAL TERMS AND CONDITIONS AS SET OUT IN OUR CURRENT PRICE SCHEDULE.

FILE 101 17-SEP-84 20:40
DATA ACQUIRED 17-SEP-84 19:46

BS (IN) 6.0000 16.0000
 CALI (IN) 6.0000 16.0000
 SP (MV) -100.0 0.0
 DT (US/F) 150.00 50.000

FILE 101 17-SEP-84 20:34
DATA ACQUIRED 17-SEP-84 19:46FILE 101 17-SEP-84 20:30
DATA ACQUIRED 17-SEP-84 18:38

BS (IN) 6.0000 16.0000
 CALI (IN) 6.0000 16.0000
 SP (MV) -100.0 0.0
 DT (US/F) 150.00 50.000

SENSOR MEASURE POINT TO TOOL ZERO

CBL 37.0 FEET	ANPL 37.0 FEET
TT3 33.3 FEET	TT4 32.3 FEET
TT1 36.0 FEET	TT2 37.0 FEET
CALI 56.1 FEET	SRAT 34.5 FEET
SFL 6.4 FEET	ILD 9.4 FEET
SP 2.5 FEET	ILM 5.7 FEET
TENS 2.8 FEET	SPAR 2.5 FEET
NOIS 28.8 FEET	

PARAMETERS

NAME	VALUE	UNIT	NAME	VALUE	UNIT
NSV1 HF1			DWS	16	
DSIN 5		US	DDEL	200	US
CDTS 100.000			DWCO	512	
DTF 189.000		US/F	DTM	56.0000	US/F
SBR 1.00000		DHMM	DSEC	3.30000	MHMD
FPHI SPHI	620000		MSEC	6.30000	
FNHM	7.82500	IN	FEK	2.15000	
PP	NORM		BHS OPEN		
			DO	0.0	F

TAPE NOT MADE