

COMPANY: RICHMOND ENERGY CORPORATION
WELL: *PAUL #34-32 REDRILL #2

FIELD: MIST
COUNTY: CLATSOP
STATE: OREGON
NATION: USA
LOCATION: 741' N & 255' E FROM SOUTH 1/4 CORNER OF SEC: 32 T1P1 2N

PERMANENT DATUM: GL
ELEV. OF PERM. DATUM: 614.0 F
LID MEASURED FROM: KB
DRLG. MEASURED FROM: KB

DATE: 24 SEP 84
RUN NO: 1

DEPTH-DRILLER: 2219.0 F
DEPTH-CORRECTOR: 2216.0 F
DEPTH-LOG INTERVAL: 497.0 F
CASEING-DRILLER: 497 F
CASEING-LOG INTERVAL: 8 5/8
BIT SIZE: 7 7/8

OTHER SERVICES-
PNC
FDC/CNL/GR

PROGRAM
TAPES
SERVICES
DRESNA
453543

TYPE FLUID IN HOLE: GEL/LIGNO
DENSITY: 10.0 LB/G
VISCOSITY: 51.0 S
PH: 9.0
FLUID LOSS: 6.4 C3
SOURCE OF SAMPLE: FLOWLINE
RM: 1.560 DHMM AT 74.0 DEGF
RMF: 1.230 DHMM AT 69.0 DEGF
RMC: 2.070 DHMM AT 69.0 DEGF
SOURCE RMF/RMC: MEASURED/MEASURED
RM AT BHT: 1.226 DHMM AT 96.0 DEGF
RMF AT BHT: .907 DHMM AT 96.0 DEGF
RMC AT BHT: 1.527 DHMM AT 96.0 DEGF

TIME CIRC. STOPPED: 17:00
TIME LOGGER ON BTM.: 19:50

MAX. REC. TEMP: 96.0 DEGF

LOGGING UNIT NO: 8128
LOGGING UNIT LOC: SACRAMENTO
RECORDED BY: PILCH/ZWALLER
WITNESSED BY: THOMAS/ALGER

REMARKS:
850PPM CL

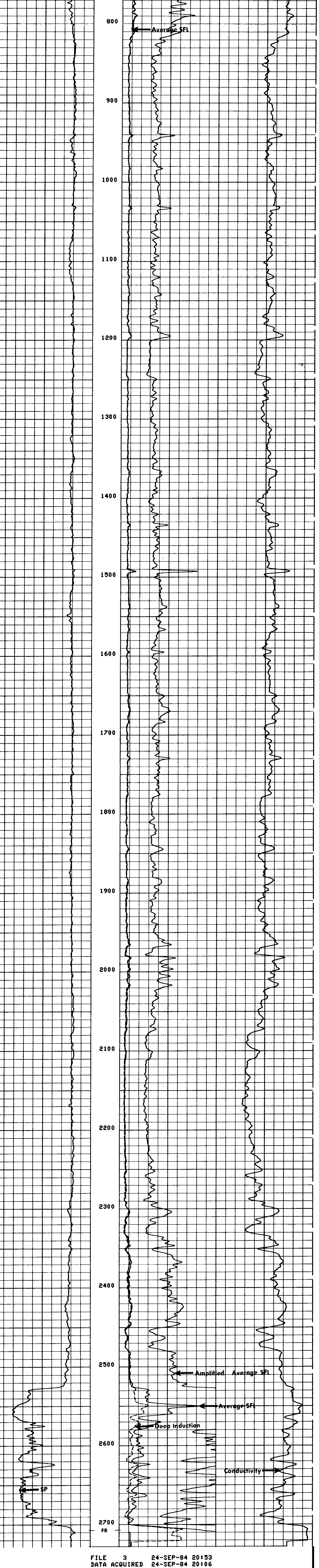
EQUIPMENT NUMBERS-
DIS-EC 567 DIC-DA 658 MCD-DA 1237 SLS-RC 252
SLC-FA 1468 IEM-BD-304 SLN-CA 138 SDM-BA 1331

ALL INTERPRETATIONS ARE OPINIONS BASED ON INFERENCES FROM ELECTRICAL OR OTHER MEASUREMENTS AND WE CANNOT, AND DO NOT GUARANTEE THE ACCURACY OR CORRECTNESS OF ANY INTERPRETATIONS, AND WE SHALL NOT, EXCEPT IN THE CASE OF GROSS OR WILLFUL NEGLIGENCE ON OUR PART, BE LIABLE OR RESPONSIBLE FOR ANY LOSS, COSTS, DAMAGES OR EXPENSES INCURRED OR SUSTAINED BY ANYONE RESULTING FROM ANY INTERPRETATION MADE BY ANY OF OUR OFFICERS, AGENTS OR EMPLOYEES. THESE INTERPRETATIONS ARE ALSO SUBJECT TO OUR GENERAL TERMS AND CONDITIONS AS SET OUT IN OUR CURRENT PRICE SCHEDULE.

FILE 7 24-SEP-84 21:00
DATA ACQUIRED 24-SEP-84 20:44

SP (MV)	0.0	ILD (DHMM)	0.0	30.000	SFLA (DHMM)	0.0	6.0000	SFLA (DHMM)	0.0	CILD (MMHO)	0.0	30.000	1000.0	0.0
---------	-----	------------	-----	--------	-------------	-----	--------	-------------	-----	-------------	-----	--------	--------	-----

FILE 3 24-SEP-84 20:56
DATA ACQUIRED 24-SEP-84 20:44



FILE 3 24-SEP-84 20:53
DATA ACQUIRED 24-SEP-84 20:06

SP (MV)	0.0	ILD (DHMM)	0.0	30.000	SFLA (DHMM)	0.0	6.0000	SFLA (DHMM)	0.0	CILD (MMHO)	0.0	30.000	1000.0	0.0
---------	-----	------------	-----	--------	-------------	-----	--------	-------------	-----	-------------	-----	--------	--------	-----

SENSOR MEASURE POINT TO TOOL ZERO

CBL 43.9 FEET	AMPL 43.9 FEET
TT3 40.1 FEET	TT4 39.1 FEET
TT1 42.9 FEET	TT2 43.9 FEET
CALI 31.8 FEET	SRAT 41.4 FEET
SFL 6.4 FEET	ILD 9.4 FEET
SP 2.5 FEET	ILM 5.7 FEET
TENS 2.5 FEET	SPAR 2.5 FEET
NOIS 35.6 FEET	

PARAMETERS

NAME	VALUE	UNIT	NAME	VALUE	UNIT
MSV1	WF1		DNS	16	
DSIM	5	US	DDEL	200	US
CDS	100.000		DNCO	512	
DTF	189.000	US/F	DTM	56.0000	US/F
SBR	1.00000	DHMM	DSEC	7.70000	MMHO
BHS	OPEN		MSEC	5.80000	MMHO
DD	0.0	F	BS	7.87500	IN
PP	NORM				

TAPE NOT MADE