

COMPANY: REICHOLD ENERGY CORPORATION
WELL: PAUL 34-32
FIELD: MIST-NEHALEM BASIN
COUNTY: COLUMBIA
STATE: OREGON
LOCATION: 741.731 N & 255.80' E OF
SECTION: 32 1/4 CORNER TWP: 6N RGE: 5W

REVISION: 1
DATE: DEC 13 1982

OTHER SERVICES:-
BHC
HDT
CIS

PERMANENT DATUM: GL
ELEVATION: 614.7'
LEG. MEASURED FROM: KB
DRLG. MEASURED FROM: KB

ELEVATIONS:-
KB: 626.1'
DF: 614.7'
GL: 614.7'

PROGRAM
TAPE NO: 28.4
SERVICE ORDER NO: 303946

DATE: 10 NOV 1982
RUN NO: 1
DEPT-DRILLER: 2699.0
DEPT-LOGGER: 2697.0
DEPT-LOG INTERVAL: 2656.0
TOP LOG INTERVAL: 495.0
CASING-DRILLER: 497.0
CASING-LOGGER: 495.0
CASING: 8.625
BIT SIZE: 7.875
BIT DEPTH: 2699.0

TYPE FLUID IN HOLE: LIGNOSULFONATE
DENSITY: 10.2 LB/G
VISCOSITY: 60.0 S
PHI: 10.0
FLUID LOSS: 5.2 C3
SOURCE OF SAMPLE: CIRC.
RM: 1.510 DHMM AT 69.0 DEGF
RMF: 2.050 DHMM AT 45.0 DEGF
RMC: 2.130 DHMM AT 46.0 DEGF
SOURCE RMF/RMC: /MEAS.
RM AT BHT: 1.171 DHMM AT 91.0 DEGF
RMF AT BHT: 1.087 DHMM AT 91.0 DEGF
RMC AT BHT: 1.151 DHMM AT 91.0 DEGF
TIME CIRC. STOPPED: 1200
TIME LOGGER ON BTM.: 1358
MAX. REC. TEMP: 91.0 DEGF
LOGGING UNIT NO: 8076
LOGGING UNIT LOC: SACRAMENTO
RECORDED BY: ANDERSEN
WITNESSED BY: ALGER

REMARKS:

EQUIPMENT NUMBERS-

IS 457 IC 342 IEM 231 SLC 1261
SLS 2251 MCD 1186 SLM 428

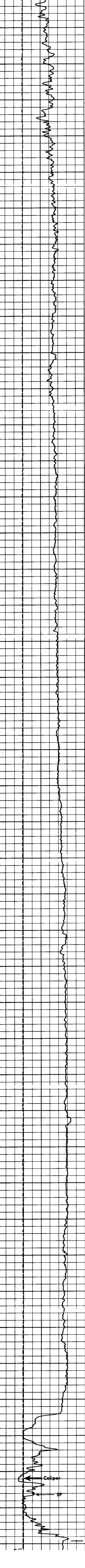
ALL INTERPRETATIONS ARE OPINIONS BASED ON INFERENCES FROM ELECTRICAL OR OTHER MEASUREMENTS AND WE CANNOT, AND DO NOT GUARANTEE THE ACCURACY OR CORRECTNESS OF ANY INTERPRETATIONS, AND WE SHALL NOT, EXCEPT IN THE CASE OF GROSS OR WILLFUL NEGLIGENCE ON OUR PART, BE LIABLE OR RESPONSIBLE FOR ANY LOSS, COSTS, DAMAGES OR EXPENSES INCURRED OR SUSTAINED BY ANYONE RESULTING FROM ANY INTERPRETATION MADE BY ANY OF OUR OFFICERS, AGENTS OR EMPLOYEES. THESE INTERPRETATIONS ARE ALSO SUBJECT TO OUR GENERAL TERMS AND CONDITIONS AS SET OUT IN OUR CURRENT PRICE SCHEDULE.

FILE 102

CAL I (IN) 6.0000 16.000
SP (MV) -100.0 0.0

DT (US/F) 175.00 75.000

FILE 102



FILE 102

CAL I (IN) 6.0000 16.000
SP (MV) -100.0 0.0

DT (US/F) 175.00 75.000

SENSOR MEASURE POINT TO TENSION REFERENCE POINT

AMPL 43.9 FEET DT 41.4 FEET
SRAT 41.4 FEET CBL 43.9 FEET
CALI 31.8 FEET TT 43.9 FEET
SFL 6.4 FEET ILM 9.4 FEET
SP 2.5 FEET ILD 5.8 FEET
TENS .0 FEET SPAR 2.5 FEET
NDIS 35.7 FEET

PARAMETERS

NAME VALUE UNIT NAME VALUE UNIT
CDTS 100.000 IN
DTF 189.000 US/F
SBR 1.00000 DHMM
FPHI SPHI
DO 0.0 F
BHS OPEN

COMPANY: REICHOLD ENERGY CORPORATION
WELL: PAUL 34-32
FIELD: MIST-NEHALEM BASIN
COUNTY: COLUMBIA STATE: OREGON

SCHL. FR: 2699.0
SCHL. TD: 2697.0
DRR. TD: 2656.0
Elev: KB 497.0
DF 495.0
GL 614.7