

COMPENSATED NEUTRON DENSITY GR 2"

CSU

COMPANY: REICHHOLD ENERGY CORPORATION
 WELL: PAUL 34-32
 FIELD: MIST-NEHALEM BASIN
 COUNTY: COLUMBIA
 STATE: OREGON
 LOCATION: S 1/4 CORNER T1P: 6N
 SEC: 3E
 RECEIVED: DEC 13 1982
 DATE: 10 NOV 1982
 RUN NO: 1
 DEPTH-DRILLER: 2699.0'
 DEPTH-LOGGER: 2692.0'
 BTM LOG INTERVAL: 2690.0'
 TOP LOG INTERVAL: 2400.0'
 CASING-DRILLER: 497'
 CASING-LOGGER: 8.625
 BIT SIZE: 7.875
 DEPTH: 2699'

PERMANENT DATUM: GL 614.7'
 ELEVATIONS-
 ELEV. OF PERM. DATUM: KB 626.1'
 LOG MEASURED FROM: KB
 DRLG. MEASURED FROM: KB
 OTHER SERVICES-
 BHC
 HGT
 CIS
 DIL
 PROGRAM
 TAPE NO:
 28.4
 SERVICE
 ORDER NO:
 303946

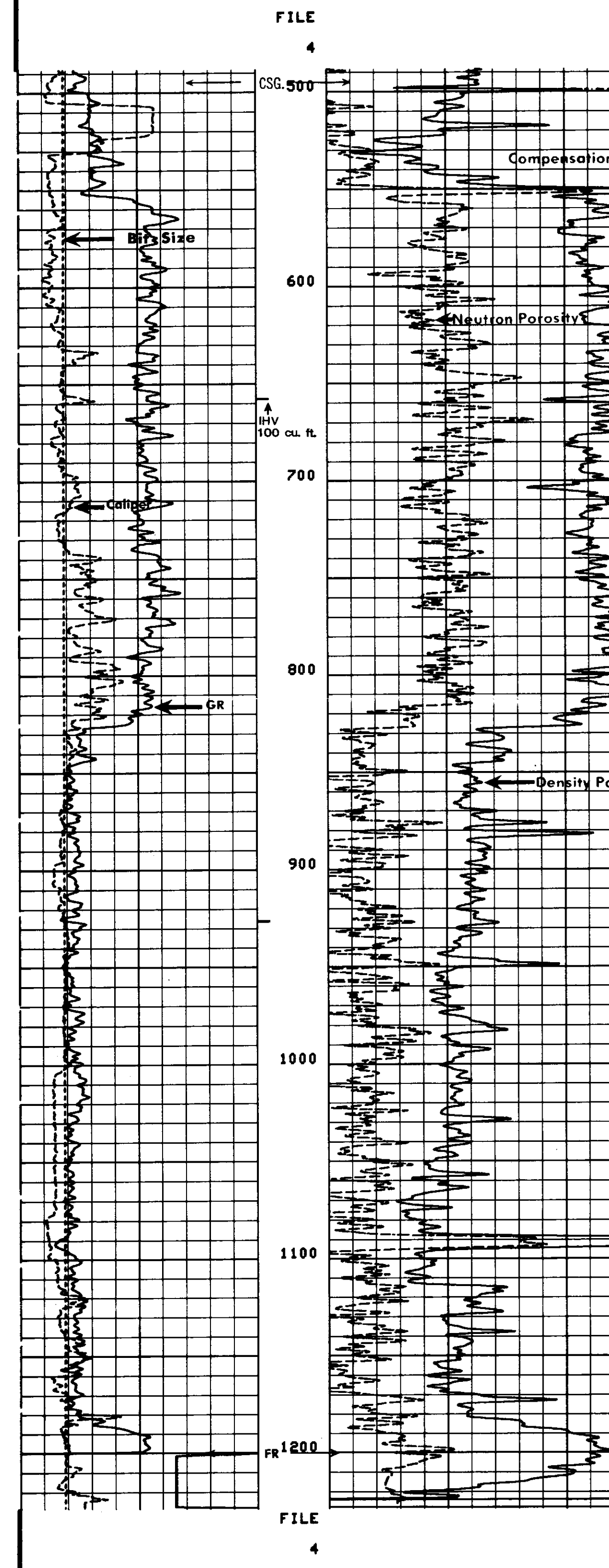
TYPE FLUID IN HOLE: LIGNOSULFONATE
 DENSITY: 10.2 LB/G
 VISCOSITY: 60.0 S
 PH: 10.0
 FLUID LOSS: 5.2 C3
 SOURCE OF SAMPLE: CIRC.
 RM: 1.510 OHMM AT 69.0 DEGF
 RMC: 2.050 OHMM AT 45.0 DEGF
 RMF: 2.130 OHMM AT 46.0 DEGF
 SOURCE RMF/RMC: /MEAS.
 RM AT BHT: 1.159 OHMM AT 92.0 DEGF
 RMF AT BHT: 1.076 OHMM AT 92.0 DEGF
 RMC AT BHT: 1.140 OHMM AT 92.0 DEGF
 TIME CIRC. STOPPED: 1200
 TIME LOGGER ON BTM: 1545
 MAX. REC. TEMP: 92.0 DEGF
 LOGGING UNIT NO: 8076
 LOGGING UNIT LOC: SACRAMENTO
 RECORDED BY: ANDERSEN
 WITNESSED BY: ALGER

REMARKS:
 EQUIPMENT NUMBERS-
 NLM 456 PGS 675 PDH 1244 SGT 591
 CMC 1420

ALL INTERPRETATIONS ARE OPINIONS BASED ON INFERENCES FROM ELECTRICAL OR OTHER MEASUREMENTS AND WE CANNOT, AND DO NOT GUARANTEE THE ACCURACY OR CORRECTNESS OF ANY INTERPRETATIONS, AND WE SHALL NOT, EXCEPT IN THE CASE OF GROSS OR WILLFUL NEGLIGENCE ON OUR PART, BE LIABLE OR RESPONSIBLE FOR ANY LOSS, COSTS, DAMAGES OR EXPENSES INCURRED OR SUSTAINED BY ANYONE RESULTING FROM ANY INTERPRETATION MADE BY ANY OF OUR OFFICERS, AGENTS OR EMPLOYEES. THESE INTERPRETATIONS ARE ALSO SUBJECT TO OUR GENERAL TERMS AND CONDITIONS AS SET OUT IN OUR CURRENT PRICE SCHEDULE.

FILE 6

RS (IN)	6.0000	16.0000	DRHO(G/C3)	-0.250	0.2500
CALI (IN)	6.0000	16.0000	NPHI ()	0.6000	0.0
GR (GAPI)	0.0	150.00	DPHI ()	0.6000	0.0



FILE 4

RS (IN)	6.0000	16.0000	DRHO(G/C3)	-0.250	0.2500
CALI (IN)	6.0000	16.0000	NPHI ()	0.6000	0.0
GR (GAPI)	0.0	150.00	DPHI ()	0.6000	0.0

SENSOR MEASURE POINT TO TENSION REFERENCE POINT

NCNL 18.1 FEET	FCNL 26.6 FEET
FFDC 2.8 FEET	MFDC 18.1 FEET
CALI 2.8 FEET	TENS 2.8 FEET
NRAT 18.1 FEET	TENS .0 FEET

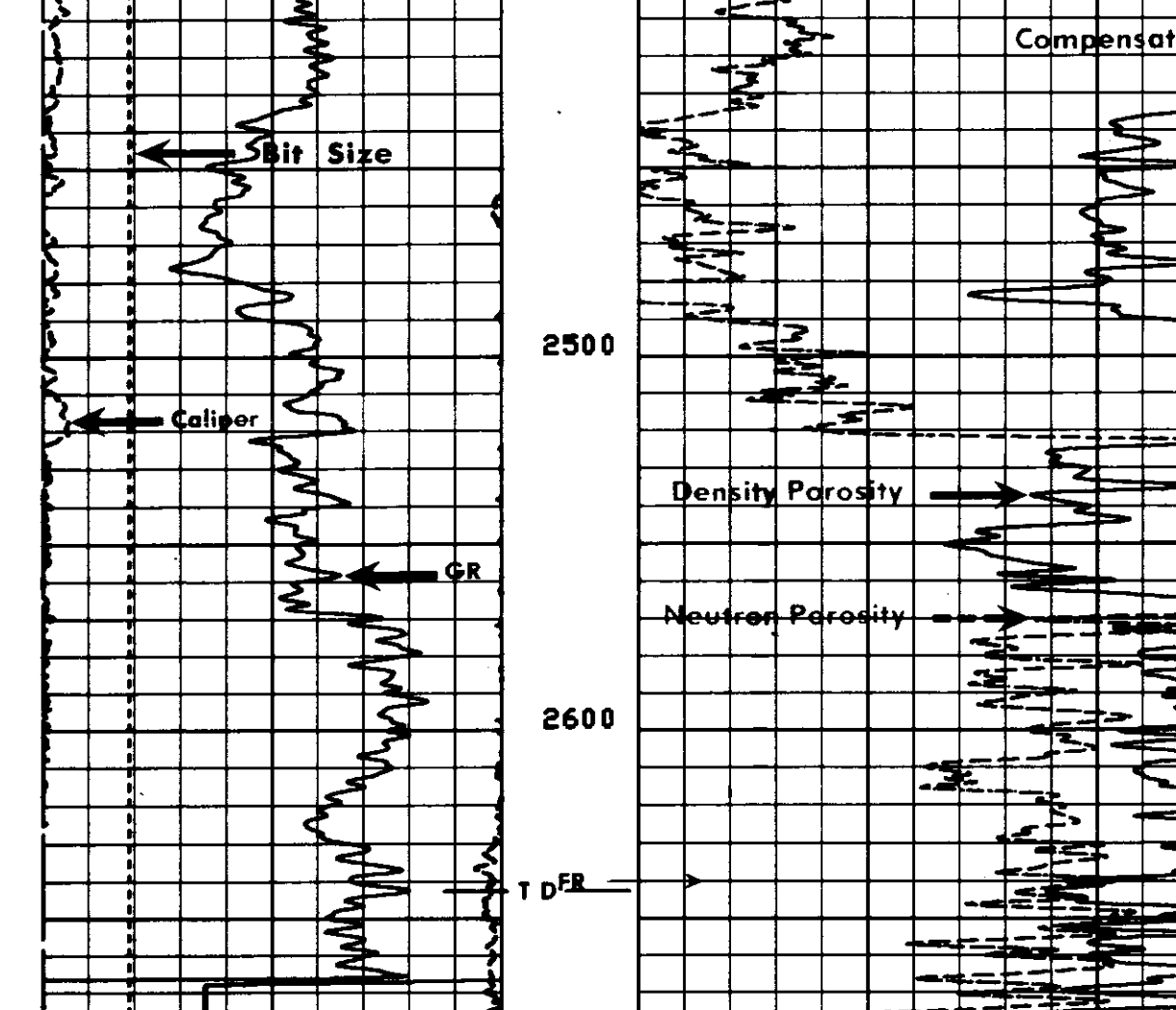
PARAMETERS

NAME	VALUE	UNIT	NAME	VALUE	UNIT
PSNR	2.18200		BS	7.87500	IN
MATR SAND			HC	CALI	
M DEN	2.65000	G/C3	FD	1.00000	G/C3
BHF	WATE		FDCC	ALLO	
BHS	OPEN		FPHI	PHIX	
DD	0.0	F			

INTERVAL NOT RECORDED: 2400 = 1200

FILE 3

RS (IN)	6.0000	16.0000	DRHO(G/C3)	-0.250	0.2500
CALI (IN)	6.0000	16.0000	NPHI ()	0.6000	0.0
GR (GAPI)	0.0	150.00	DPHI ()	0.6000	0.0



FILE 3

RS (IN)	6.0000	16.0000	DRHO(G/C3)	-0.250	0.2500
CALI (IN)	6.0000	16.0000	NPHI ()	0.6000	0.0
GR (GAPI)	0.0	150.00	DPHI ()	0.6000	0.0

SENSOR MEASURE POINT TO TENSION REFERENCE POINT

NCNL 18.1 FEET	FCNL 26.6 FEET
FFDC 2.8 FEET	MFDC 18.1 FEET
CALI 2.8 FEET	TENS 2.8 FEET
NRAT 18.1 FEET	TENS .0 FEET

PARAMETERS

NAME	VALUE	UNIT	NAME	VALUE	UNIT
PSNR	2.18200		BS	7.87500	IN
MATR SAND			HC	CALI	
M DEN	2.65000	G/C3	FD	1.00000	G/C3
BHF	WATE		FDCC	ALLO	
BHS	OPEN		FPHI	PHIX	
DD	0.0	F			

COMPANY	REICHHOLD ENERGY CORPORATION	SCHL. FR	2690.0'
WELL	PAUL 34-32	SCHL. TD	2692.0'
FIELD	MIST-NEHALEM BASIN	DRLR. TD	2699.0'
COUNTY	COLUMBIA	Elev:	KB 626.1'
STATE	OREGON	DF	N/A
		GL	614.7'