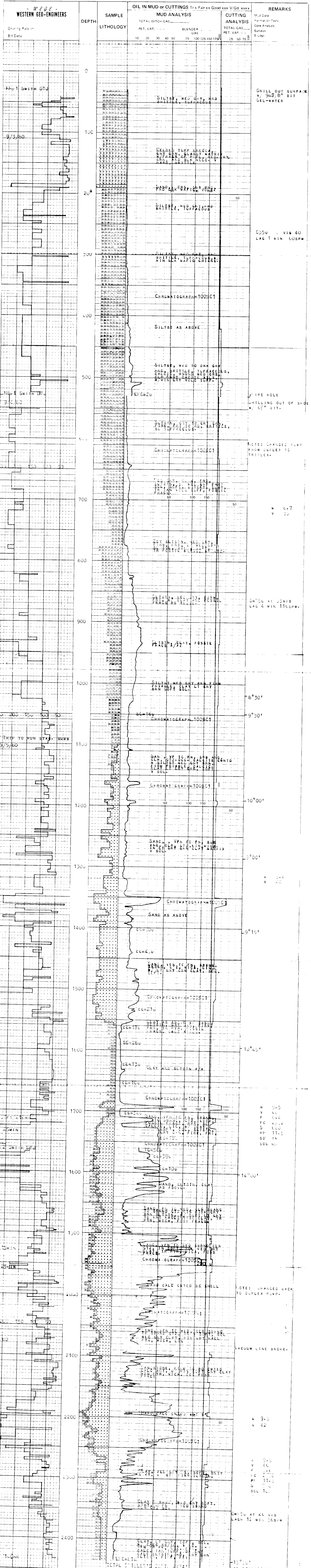


WELL TAG 10-14	- W E G E -	RECEIVED P.L.D. APR 18 1984 DEPT. OF GEOLOGY EMERSON
COMPANY AMERICAN GASAR PETROLEUM CO.	<b>WESTERN GEO-ENGINEERS</b> "A SERVICE TO THE OIL AND GAS INDUSTRY"	
AREA WEST REHALEM LASIN	<b>LITHOLOGY SYMBOLS</b>	<b>REMARKS</b>
LOCATION 300' N. 1053.41' E. of SW CORNER, SEC 10; T. 10; R. 42E		WELL ELEV. GL. 563' KB. 593.5' SALINITY IN PPM CL- FILTRATE IN CC/30 MIN. GAS TRAP AGITATOR TYPE MUD LIGOSULFONATE BAROID
COUNTY, STATE COLUMBIA, OREGON	<b>LEGEND</b>	FALL GRAPEY BIG-1
<b>MUD DATA</b> W WEIGHT V VISCOSITY F FILTRATE FC FILTER CAKE SD SAND IN %	<b>SALINITY</b> S SALINITY R RESISTIVITY RF FILTRATE RESISTIVITY <b>BIT DATA</b> NB NEW BIT RRB RERUN BIT	<b>OTHER DATA</b> CB CORE BIT WLCB WIRE LINE CB TC TRIP GAS CG CONNECTION GAS C CARBIDE GAS
DATE 9/2/80 to 9/10/80	DEPTH 42' to 2432'	ENGINEERS LUTHER THOMAS
		<b>CASING</b> 7" TO 15' TO TO



AMERICAN GASAR PETROLEUM CO. SEC 10-12, T. 10; R. 42E, WEST REHALEM LASIN, COLUMBIA CO., OREGON