

Compensated Neutron  
Gamma Ray

FILE NO. \_\_\_\_\_  
WELL \_\_\_\_\_  
COMPANY \_\_\_\_\_  
STATIONING #12-24 616

2962  
FIELD \_\_\_\_\_  
COUNTY \_\_\_\_\_  
STATE \_\_\_\_\_  
LOCATION \_\_\_\_\_  
OTHER SERVICES \_\_\_\_\_

LOGGING MEASURED FROM \_\_\_\_\_  
DATE \_\_\_\_\_  
SERIES NO. \_\_\_\_\_  
CORRECTION \_\_\_\_\_

PERMANENT DATUM \_\_\_\_\_  
LOGGING MEASURED FROM \_\_\_\_\_  
DATE \_\_\_\_\_  
SERIES NO. \_\_\_\_\_  
CORRECTION \_\_\_\_\_

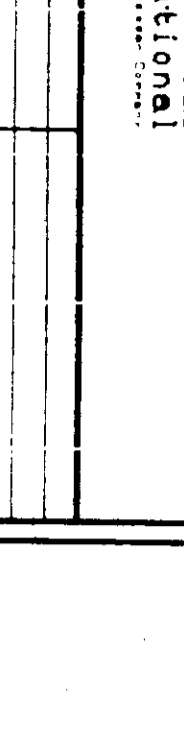
LOGGING MEASURED FROM \_\_\_\_\_  
DATE \_\_\_\_\_  
SERIES NO. \_\_\_\_\_  
CORRECTION \_\_\_\_\_

LOGGING MEASURED FROM \_\_\_\_\_  
DATE \_\_\_\_\_  
SERIES NO. \_\_\_\_\_  
CORRECTION \_\_\_\_\_

LOGGING MEASURED FROM \_\_\_\_\_  
DATE \_\_\_\_\_  
SERIES NO. \_\_\_\_\_  
CORRECTION \_\_\_\_\_

LOGGING MEASURED FROM \_\_\_\_\_  
DATE \_\_\_\_\_  
SERIES NO. \_\_\_\_\_  
CORRECTION \_\_\_\_\_

IN MIXING INTERPRETATIONS OF LOGS OUR  
EMPLOYEES WILL GIVE CUSTOMER THE BENEFIT  
OF THEIR BEST JUDGEMENT. BUT SINCE  
OUR INTERPRETATIONS ARE OFTEN OFTEN BASED  
ON INFORMATION FROM ELECTRIC OR OTHER  
INSTRUMENTS WE CANNOT GUARANTEE THE  
ACCURACY OF OUR RECORDS. WE MAKE NO  
CLAIMS OF MERCHANTABILITY OR FITNESS FOR  
ANY PARTICULAR PURPOSE. THE USER  
ACKNOWLEDGES THAT THE USER'S USE OF  
THIS LOGS IS AT HIS SOLE RISK AND THAT  
HE RELEASES AND AGREES TO HOLD WESTERN  
ATLAS INTERNATIONAL AND ITS EMPLOYEES  
HARMLESS FROM ANY INTERPRETATION MADE  
BY HIM OR OUR EMPLOYEES.



WESTERN ATLAS  
INTERNATIONAL  
SERVICES

FINAL PRINT

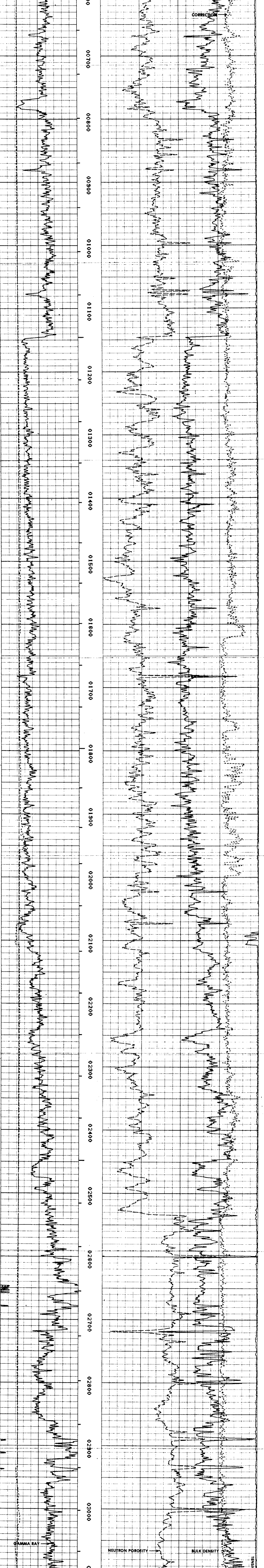
RUN	TRIP	TOOL	SERIAL NO.	SERIES NO.	POSITION
1	1	CDL	50138	2212	0
1	1	CAF	60578	2212	0
1	1	CN	72435	2435	0
1	1	CR	78585	2435	0

COVER: \_\_\_\_\_ FILE: \_\_\_\_\_ DATE: 11 8 88 TIME: 5:11:25

EQUIPMENT DATA

RUN	TRIP	TOOL	SERIAL NO.	SERIES NO.	POSITION
1	1	CDL	50138	2212	0
1	1	CAF	60578	2212	0
1	1	CN	72435	2435	0
1	1	CR	78585	2435	0

WELL NAME: STEPLINS NO. 12-24-16  
SERVICE: KUCOBE  
REVISION: FS-94 REV 6308 VER-2



LOGGING MEASURED FROM \_\_\_\_\_  
DATE \_\_\_\_\_  
SERIES NO. \_\_\_\_\_  
CORRECTION \_\_\_\_\_