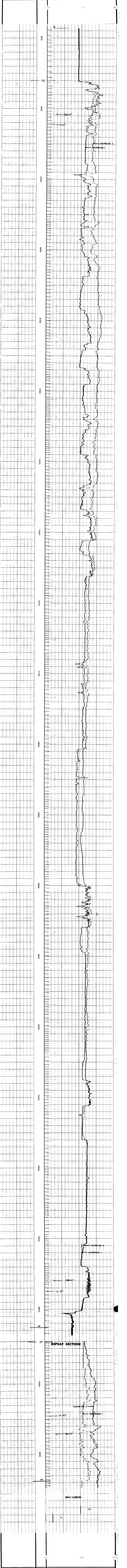


COMPANY MOBIL OIL CORPORATION
 WELL SUTHERLIN UNIT NO. 1
 FIELD WILDCAT
 COUNTY DOUGLAS STATE OREGON

Rm - - - @ - - - F
 Rmi - - - @ - - - F
 Rmc - - - @ - - - F
 BHT 109 °F

SCHL FR 3626
 SCHL TD 3627
 DRLR TD 3624
 Elev: KB 511
 GL 488

DETAIL LOG
 5" = 100'



COMPANY MOBIL OIL CORPORATION
 WELL SUTHERLIN UNIT NO. 1
 FIELD WILDCAT
 COUNTY DOUGLAS STATE OREGON

Rm - - - @ - - - F
 Rmi - - - @ - - - F
 Rmc - - - @ - - - F
 BHT 109 °F

SCHL FR 3626
 SCHL TD 3627
 DRLR TD 3624
 Elev: KB 511
 GL 488