

COMPANY Carbon Energy International
WELL WNS Menasha #32-1
FIELD Wildcat
COUNTY Coos
STATE Oregon
LOCATION 21811 St. & 299th St
APR SERIAL NO. 36-011-00206
SECT. 32
TWP. 28S
RANGE. 13W
PERMIT NO. 1801
DATE 18/01
LOGGING FROM 18/01
LOGGING TO 18/01
LOGGING BY EMB
LOGGING COMPANY Schlumberger
LOGGING UNIT EMB
LOGGING EQUIPMENT SLS WA 2012
LOGGING SOFTWARE SLS WA 2012
LOGGING OPERATOR SLS WA 2012
LOGGING SUPERVISOR SLS WA 2012
LOGGING ENGINEER SLS WA 2012
LOGGING TECHNICIAN SLS WA 2012
LOGGING ASSISTANT SLS WA 2012
LOGGING OPERATOR SLS WA 2012
LOGGING SUPERVISOR SLS WA 2012
LOGGING ENGINEER SLS WA 2012
LOGGING TECHNICIAN SLS WA 2012
LOGGING ASSISTANT SLS WA 2012

The well name, location and acreage reference data were furnished by the customer.

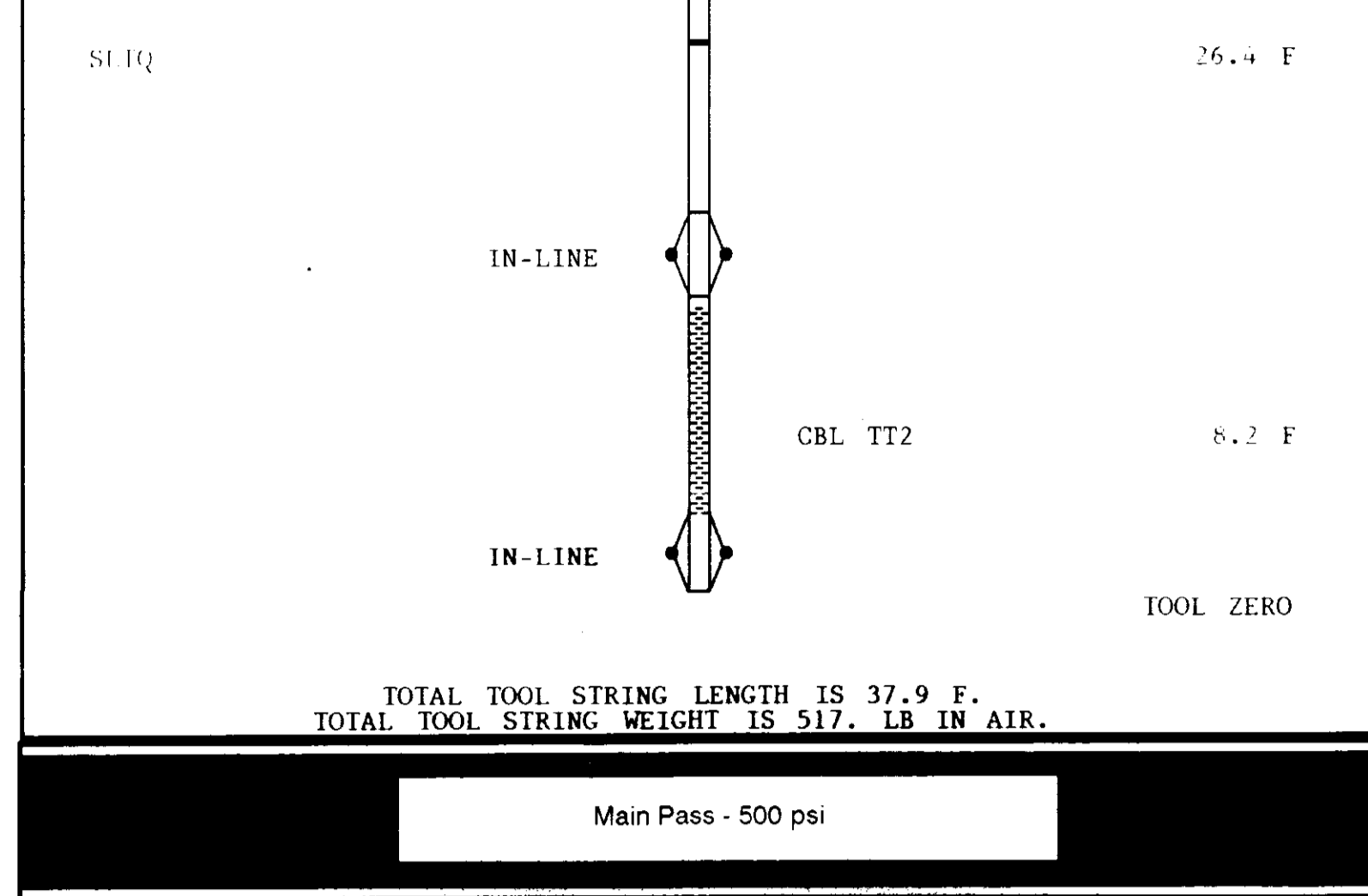
All interpretations are based on references from electrical or other measurements and we cannot be held responsible for any loss, costs, damages or expenses incurred by any person or organization as a result of any interpretation made by any of our officers, agents or employees. These interpretations are not to be used for any purpose other than that for which they were intended.

Run No. FOUR
Service Order No. 454645
Logging Speed 3600 FT/HR

EQUIPMENT DATA

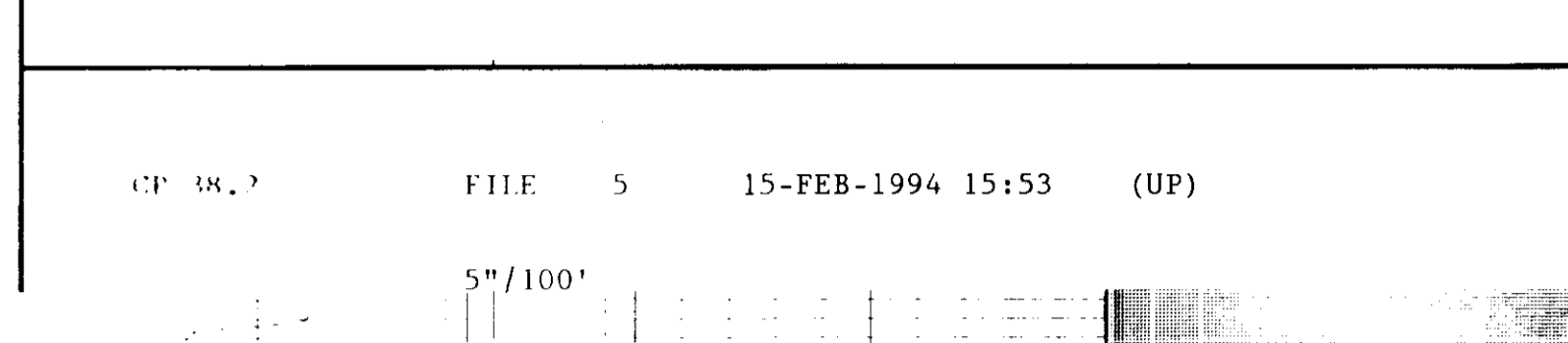
Tool Number 1	SLS WA 2012
Tool Number 2	SLS WA 88
Tool Number 3	SGC_A 3545
Tool Number 4	CAL_R 1083
Tool Number 5	SLS WA 1328
Tool Number 6	NLM BC 456
Tool Number 7	
Tool Number 8	
Tool Number 9	
Tool Number 10	
Tool Number 11	
Tool Number 12	

REMARKS:
 Completed WNS CBL run 12 JAN 1994
 MAXIMUM CBL WITH 500 PSI SURFACE PRESSURE

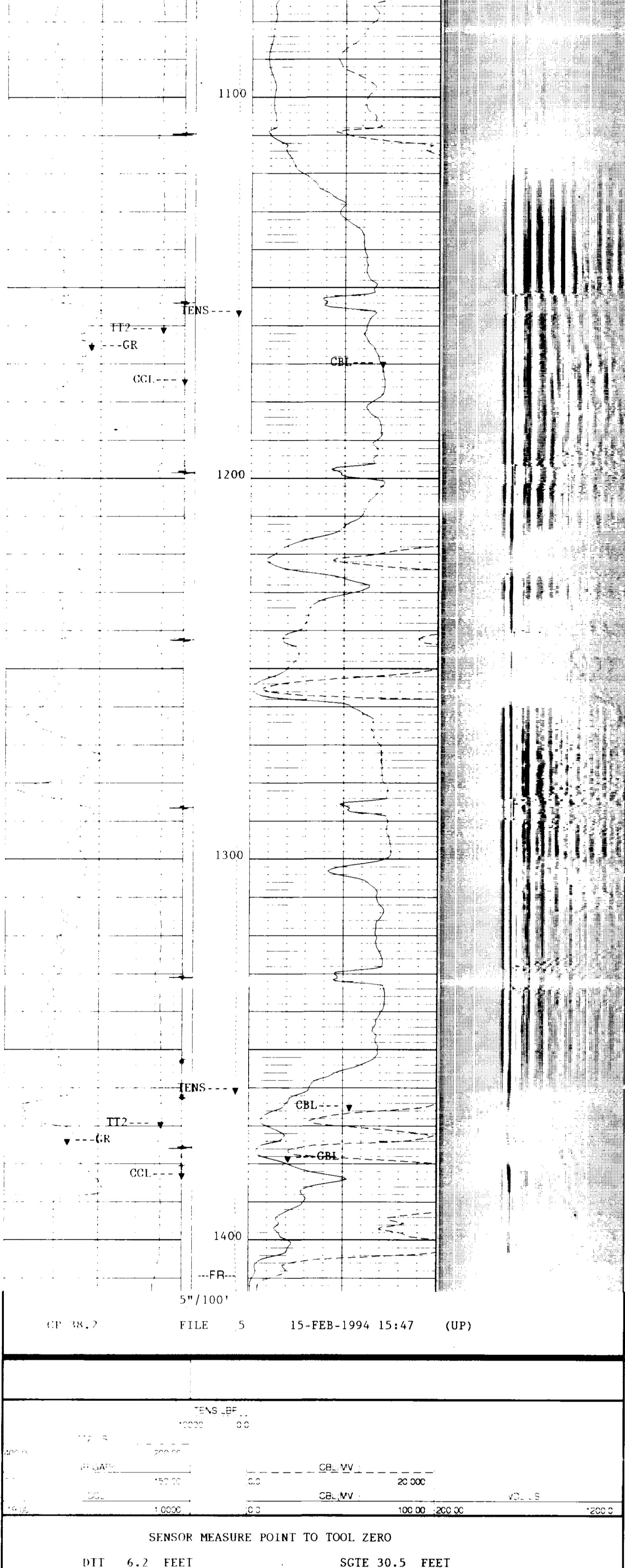


TOTAL TOOL STRING LENGTH IS 37.9 F.
 TOTAL TOOL STRING WEIGHT IS 517. LB IN AIR.

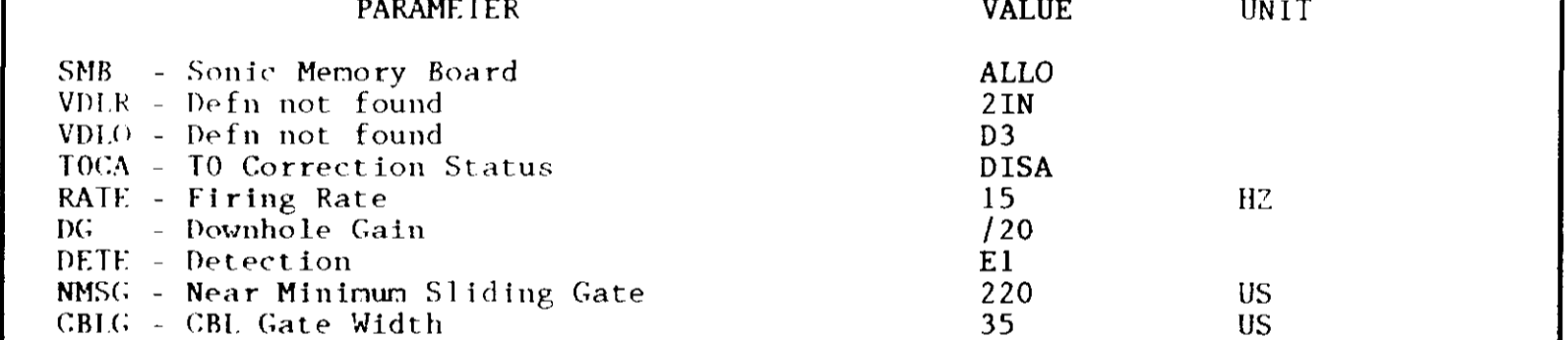
Main Pass - 500 psi



CP 38.2 FILE 5 15-FEB-1994 15:53 (UP)



CP 38.2 FILE 5 15-FEB-1994 15:47 (UP)

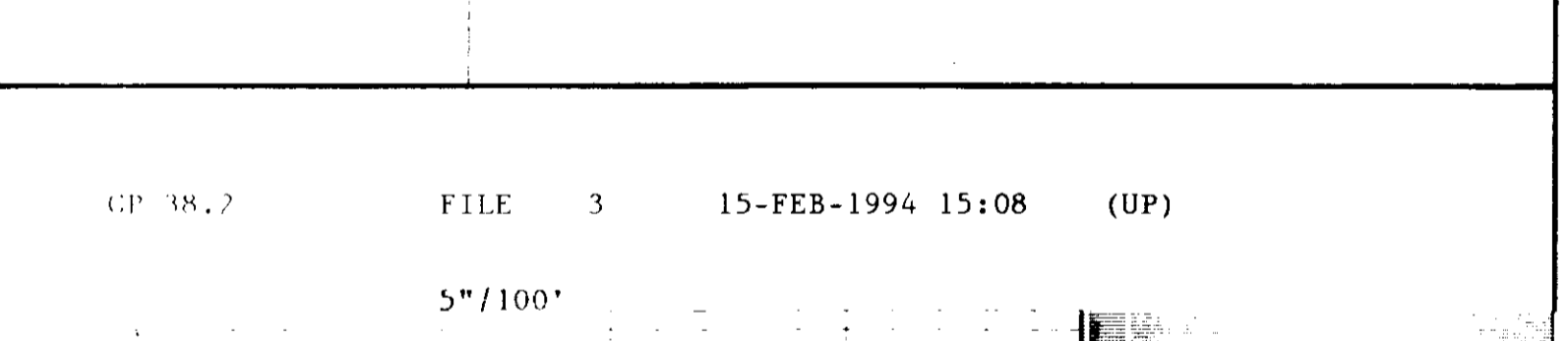


SENSOR MEASURE POINT TO TOOL ZERO
 DIT 6.2 FEET
 SLIQ 8.2 FEET
 SCGE 30.5 FEET
 CALR 34.2 FEET

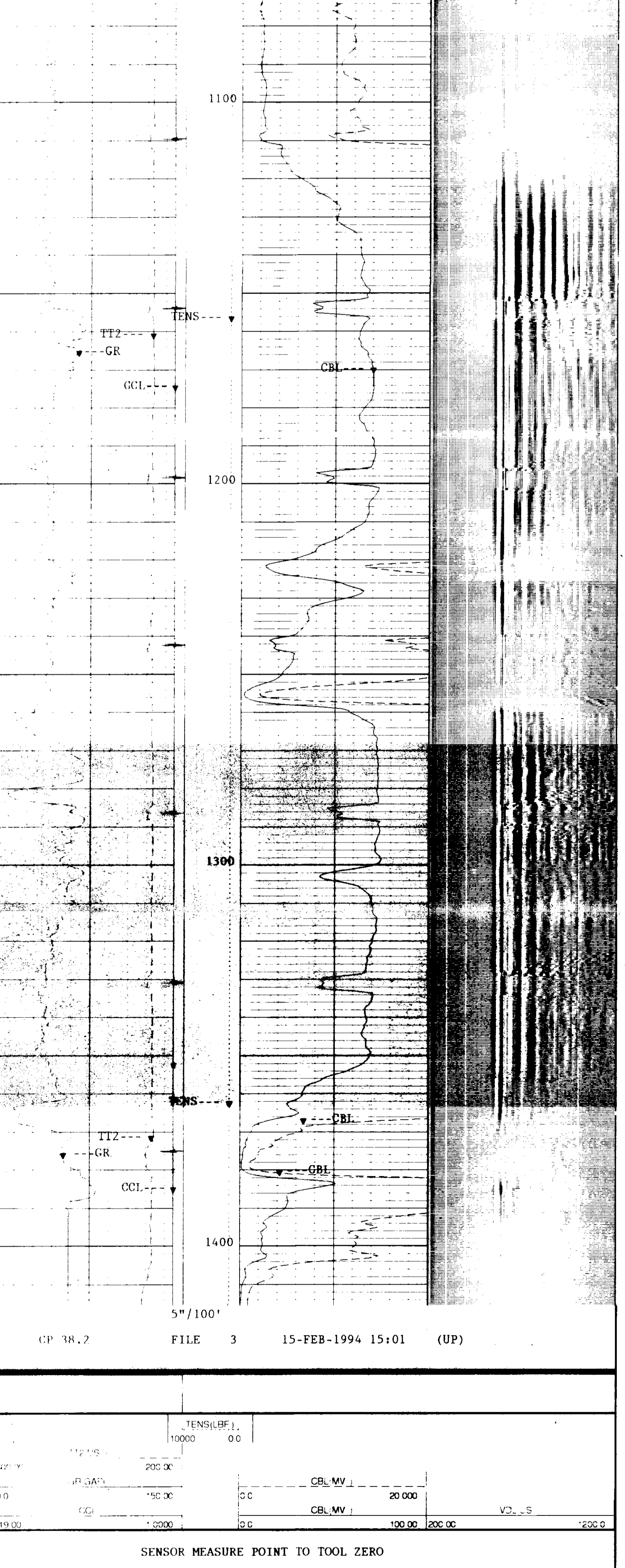
PARAMETERS

PARAMETER	VALUE	UNIT
SMB - Sonic Memory Board	ALLO	
VDLR - Defn not found	2IN	
VDLO - Defn not found	D3	
TOCA - TO Correction Status	DISA	
RATE - Firing Rate	15	HZ
DC - Downhole Gain	/20	
DETE - Detection	E1	
NMSG - Near Minimum Sliding Gate	220	US
CRIG - CBI Gate Mith	35	US
AMPI - Sonic Amplitude	2	
CBI - Cement Bond Log Amplitude	UT	
WFM - Waveform Mode	1	
SS - Sweep Speed	MEDI	
TOD - TO Delay	DISA	
DTF - Delta-T Fluid	189.000	US/F
DIM - Delta-T Matrix	56.0000	US/F
CDTS - Correction for Delta-T Shale, Empirical	100.000	
SPFS - Sonic Porosity Formula Select	R-H	
WMUD - Weight of Mud	8.5000	LB/G
NCJT - NCT Calibration Jig Type	GSRY	
CSJR - Compressive Strength of Cement	1000.00	PSIA
GWFI - Gasing Weight	11.6000	LB/F
DMCO - Digitizer Word Count	512	
DSIN - Digitizer Sample Interval	5	US
DDEL - Digitizing Delay	200	US
BS - Bit Size	8.75000	IN
BHS - BoreHole Status (Open or Cased)	CASE	
CSIZ - Casing Size	4.50000	IN

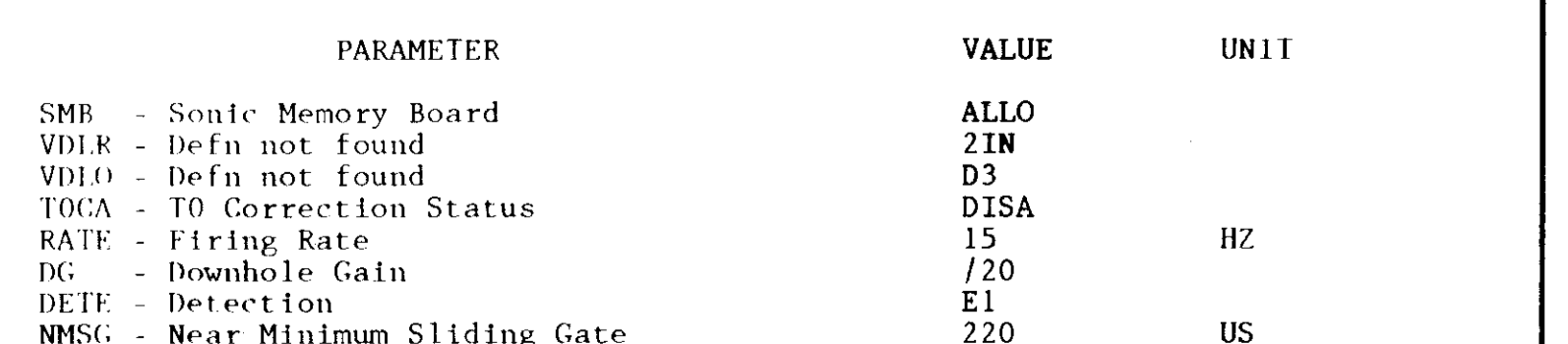
Repeat Section - 0 psi



CP 38.2 FILE 3 15-FEB-1994 15:08 (UP)



CP 38.2 FILE 3 15-FEB-1994 15:01 (UP)



SENSOR MEASURE POINT TO TOOL ZERO
 DIT 6.2 FEET
 SLIQ 8.2 FEET
 SCGE 30.5 FEET
 CALR 34.2 FEET

PARAMETERS

PARAMETER	VALUE	UNIT
SMB - Sonic Memory Board	ALLO	
VDLR - Defn not found	2IN	
VDLO - Defn not found	D3	
TOCA - TO Correction Status	DISA	
RATE - Firing Rate	15	HZ
DC - Downhole Gain	/20	
DETE - Detection	E1	
NMSG - Near Minimum Sliding Gate	220	US
CRIG - CBI Gate Width	35	US
AMPI - Sonic Amplitude	2	
CBI - Cement Bond Log Amplitude	UT	
WFM - Waveform Mode	1	
SS - Sweep Speed	MEDI	
TOD - TO Delay	DISA	
DTF - Delta-T Fluid	189.000	US/F
DIM - Delta-T Matrix	56.0000	US/F
CDTS - Correction for Delta-T Shale, Empirical	100.000	
SPFS - Sonic Porosity Formula Select	R-H	
WMUD - Weight of Mud	8.5000	LB/G
NCJT - NCT Calibration Jig Type	GSRY	
CSJR - Compressive Strength of Cement	1000.00	PSIA
GWFI - Gasing Weight	11.6000	LB/F
DMCO - Digitizer Word Count	512	
DSIN - Digitizer Sample Interval	5	US
DDEL - Digitizing Delay	200	US
BS - Bit Size	8.75000	IN
BHS - BoreHole Status (Open or Cased)	CASE	
CSIZ - Casing Size	4.50000	IN

COMPANY Carbon Energy International
WELL WNS Menasha #32-1
FIELD Wildcat
COUNTY Coos
STATE Oregon
SCHL. FR 1400 F
SCHL. TD 1945 F
DRLR. TD 1940 F
Elev. KB 830 F
DF 820 F
GL 850 F