

01282K 22-19-66

CONFIDENTIAL
FDC / CNL / GR 2-

CSI

COMPANY: DIAMOND SHARROCK CORPORATION

WELL: MATZEK 22-19

FIELD: HILLCAT

COUNTY: CLATSOP

STATE: OREGON

LOCATION: 19451 SOUTH 21ST EAST

SEC: 19 NORTHWEST 1/4 6N

PERMITS: 526.0

ELEV. OF PERM. DATUM: 636.0

LOG MEASURED FROM: PERM. DATUM

DRG. MEASURED FROM: K8

DATE: 1 MAR 66

RUN NO: 3

DEPTH-DRILLER: 5195.0

DEPTH-LOGGER: 5188.0

BTM LOG INTERVAL: 5180.0

TOP LOG INTERVAL: 1028.0

CASING-DRILLER: 1028.0

CASING-LOGGER: 1028.0

CASING: 9 5/8"

BIT SIZE: 8 7/8"

OTHER SERVICES-
BIL
HDI
CIS
CST

PROGRAM
T 82.4
SERVICE
DRR: 383582

CONFIDENTIAL

TYPE FLUID IN HOLE: LOW SOLIDS NON DISPERSED
 DENSITY: 10.7 LB/G
 VISCOSITY: 55.0 S
 PH: 10.1
 FLUID LOSS: 5.2 CC
 SOURCE OF SAMPLE: 1.280 OHMM AT 74.0 DEGF
 RM: 2.190 OHMM AT 52.0 DEGF
 RMF: 1.680 OHMM AT 52.0 DEGF
 RMC: MEAS/MEAS
 SOURCE RMF/RMC: 0.856 OHMM AT 114. DEGF
 RM AT BHT: 1.067 OHMM AT 114. DEGF
 RMF AT BHT: 0.819 OHMM AT 114. DEGF
 RMC AT BHT: 0.819 OHMM AT 114. DEGF

TIME CIRC. STOPPED: 0000 3/3
 TIME LOGGER ON BTM.: 0830 3/3

MAX. REC. TEMP: 114.0 DEGF

LOGGING UNIT NO: 8126
 LOGGING UNIT LOC: SACRAMENTO
 RECORDED BY: BURNISON
 WITNESSED BY: WILSON

REMARKS: TD NOT SHOWN ON LOG AS TOOL POWER OFF TO OPEN CALIPER

EQUIPMENT NUMBERS-
 PGS-HB 599 PDH-M 1101 PGC-JA 631 NLM-BC 158
 SGC-JC 2087 CNC-A 2191

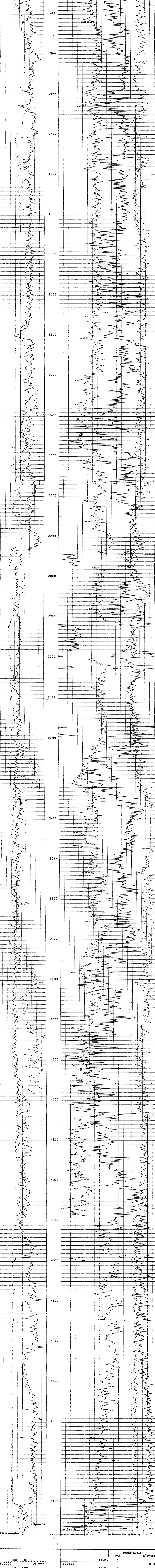
ALL INTERPRETATIONS ARE OPINIONS BASED ON INFERENCES FROM ELECTRICAL OR OTHER MEASUREMENTS AND WE CANNOT, AND DO NOT GUARANTEE THE ACCURACY OR CORRECTNESS OF ANY INTERPRETATIONS, AND WE SHALL NOT, EXCEPT IN THE CASE OF GROSS OR WILLFUL NEGLIGENCE ON OUR PART, BE LIABLE OR RESPONSIBLE FOR ANY LOSS, COSTS, DAMAGES OR EXPENSES INCURRED OR SUSTAINED BY ANYONE RESULTING FROM ANY INTERPRETATION MADE BY ANY OF OUR OFFICERS, AGENTS OR EMPLOYEES. THESE INTERPRETATIONS ARE ALSO SUBJECT TO OUR GENERAL TERMS AND CONDITIONS AS SET OUT IN OUR CURRENT PRICE SCHEDULE.

FILE 4

DRHO(G/C3) 0.250 0.2500
 DPHIC 0.6000 0.0
 NPHIC 0.6000 0.0

6.0000 CALI(IN.) 16.000
 0.0 GR (GAPI) 150.00

FILE 1



6.0000 CALI(IN.) 16.000
 0.0 GR (GAPI) 150.00

DRHO(G/C3) 0.250 0.2500
 DPHIC 0.6000 0.0
 NPHIC 0.6000 0.0

SENSOR MEASURE POINT TO TENSION REFERENCE POINT
 NCNL 15.6 FEET GR 24.1 FEET
 FFDC 3 FEET FNL 15.6 FEET
 CALL 3 FEET NFDC 3 FEET
 NRAT 15.6 FEET TENS 0 FEET

PARAMETERS
 NAME VALUE UNIT NAME VALUE UNIT
 PSNR 2.25700 BS 8.75000 IN
 MATR SAND HC CALI
 MDEN 2.65000 G/C3 FC 1.00000 G/C3
 BHF WAT FDC ALLG
 FNUM 0.620000 FEX 2.15000
 DD 0.0 BHS OPEN

COMPANY: DIAMOND SHARROCK CORPORATION SCHL FR 5180.0'
 WELL: MATZEK 22-19 SCHL TD 5188.0'
 FIELD: HILLCAT DRLR TO 5195.0'
 COUNTY: CLATSOP STATE: OREGON Elev: K8 645.0'
 DF N/A
 GL 636.0'

END