

COMPANY: OREGON NATURAL GAS DEVEL. CORP.

WELL: HERNER 34-21

FIELD: ST. LOUIS

COUNTY: MARION

STATE: OREGON

LOCATION: 389.57' NORTH & 1585.5' WE

SEC: 21 FROM SE CORNER TAP: 55 RGE: 2U

PERMANENT DATUM: GL ELEVATIONS: KB: 193.5 F

ELEV. OF PERM. DATUM: 181.0 F

LOG MEASURED FROM: KB DB: 181.0 F

DRLG. MEASURED FROM: KB GL: 181.0 F

DATE: 25 NOV 84

RUN NO: 1

DEPTH-DRILLER: 2808.0 F

DEPTH-LOGGER: 2806.0 F

BTM LOG INTERVAL: 2800.0 F

TOP LOG INTERVAL: 1604.0 F

CASING-DRILLER: 1603 F

CASING-LOGGER: 1604 F

CASING: 8 5/8"

BIT SIZE: 7 7/8"

DEPTH: 2808 F

OTHER SERVICES-
FDC/CNL/GR
HDT
CST

PROGRAM
TAPE NO:
SERVICE
ORDER NO:
432172

TYPE FLUID IN HOLE: GEL/LIGND.
DENSITY: 9.3 LB/G
VISCOSITY: 46.0 S
PH: 9.0
FLUID LOSS: 6.6 C3
SOURCE OF SAMPLE: FLOWLINE
RM: 3.260 DHMM AT 53.0 DEG
RMF: 3.680 DHMM AT 45.0 DEG
RMC: 2.790 DHMM AT 47.0 DEG
SOURCE RMF/RMC: MEAS/MEAS
RM AT BHT: 1.917 DHMM AT 95.0 DEG
RMF AT BHT: 1.876 DHMM AT 95.0 DEG
RMC AT BHT: 1.477 DHMM AT 95.0 DEG

TIME CIRC. STOPPED: 12:00 11-24
TIME LOGGER ON BTM.: 16:31 11-24

MAX. REC. TEMP: 95.0 DEGF

LOGGING UNIT NO: 817E
LOGGING UNIT LOC: SACRAMENTO
RECORDED BY: SUTER
WITNESSED BY: MEYER

REMARKS:
SALINITY: 350 PPM CL-
CENTRALIZATION: CMEZ AND RUBBER TINS

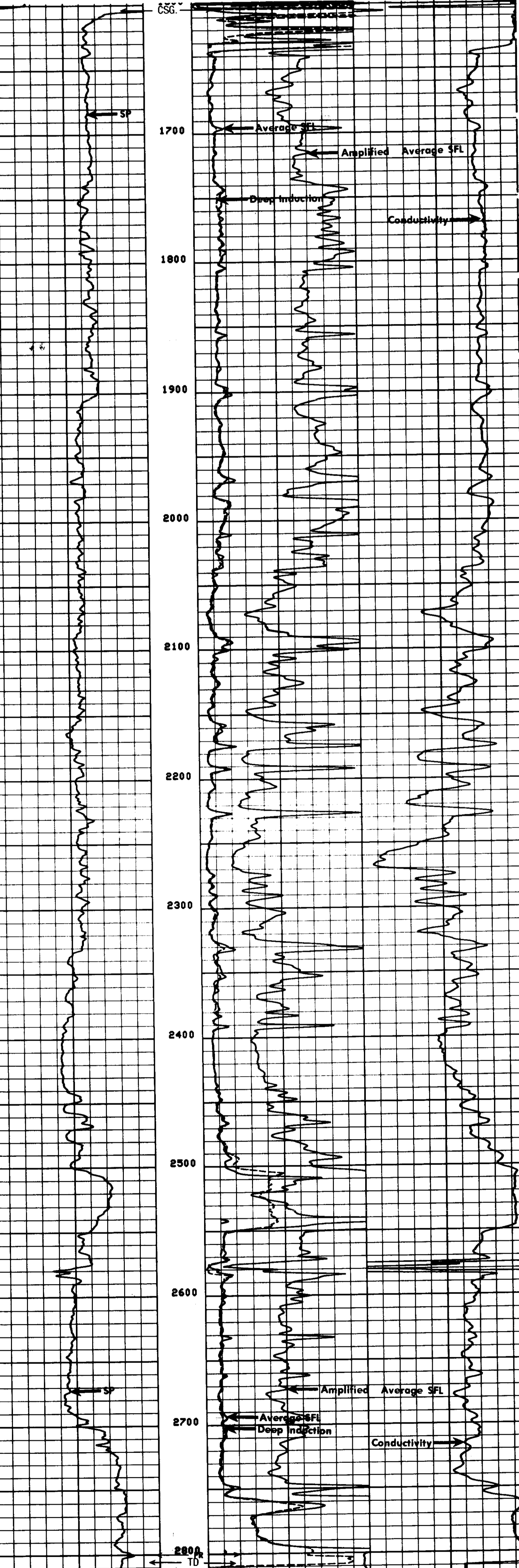
EQUIPMENT NUMBERS-

DIS 1422 DIC 1149 MCD 1507 SLS 346
SLC 1321 IEM 686 SLM 1281 SOM 1033

ALL INTERPRETATIONS ARE OF INIONS BASED ON INFERENCES FROM ELECTRICAL OR OTHER MEASUREMENTS AND WE CANNOT, AND DO NOT GUARANTEE THE ACCURACY OR CORRECTNESS OF ANY INTERPRETATIONS, AND WE SHALL NOT, EXCEPT IN THE CASE OF GROSS OR WILLFUL NEGLIGENCE ON OUR PART, BE LIABLE OR RESPONSIBLE FOR ANY LOSS, COSTS, DAMAGES OR EXPENSES INCURRED OR SUSTAINED BY ANYONE RESULTING FROM ANY INTERPRETATION MADE BY ANY OF OUR OFFICERS, AGENTS OR EMPLOYEES. THESE INTERPRETATIONS ARE ALSO SUBJECT TO OUR GENERAL TERMS AND CONDITIONS AS SET OUT IN OUR CURRENT PRICE SCHEDULE.

SP (MV)	ILD (DHMM)	SFLA (DHMM)	CILD (MMHD)
-100.0 0.0	0.0 30.000	0.0 6.0000	0.0 1000.0 0.0
	SFLA (DHMM)		
	0.0 30.000		

FILE 5 24-NOV-84 16:57
DATA ACQUIRED 24-NOV-84 16:51



FILE 5 24-NOV-84 16:54
DATA ACQUIRED 24-NOV-84 16:31

SP (MV)	ILD (DHMM)	SFLA (DHMM)	CILD (MMHD)
-100.0 0.0	0.0 30.000	0.0 6.0000	0.0 1000.0 0.0
	SFLA (DHMM)		
	0.0 30.000		

SENSOR MEASURE POINT TO TOOL ZERO

CBL 37.0 FEET	AMPL 37.0 FEET
TT3 33.3 FEET	TT4 32.3 FEET
TT1 36.0 FEET	TT2 37.0 FEET
CALI 56.1 FEET	SRAT 34.5 FEET
SFL 6.4 FEET	ILD 9.4 FEET
SP 2.5 FEET	ILM 5.7 FEET
TENS 2.5 FEET	SPAR 2.5 FEET
NOIS 28.8 FEET	

PARAMETERS

NAME	VALUE	UNIT	NAME	VALUE	UNIT
MSV1	WF1		DHS	16	
DSIN	5	US	DDEL	200	US
CDTS	100.000		DMCD	512	
DTF	189.000	US/F	DTM	55.6000	MM/F
SBR	1.00000	DHMM	DSEC	3.80000	MMHD
FPHI	SPHI		MSEC	5.40000	MMHD
FNUM	1.00000		FEXP	2.00000	
BS	7.87500	IN	BHS	OPEN	
PP	NDRH		DD	0.0	F

TAPE NOT MADE