

2" FDC/CNL/GR



COMPANY: OREGON NATURAL GAS DEVEL. CORP.
WELL: HERNER 34-21

FIELD: ST. LOUIS
COUNTY: MARION
STATE: OREGON

LOCATION: 389.57' NORTH & 1585.5' ME
FROM SE CORNER
SEC: 21 TWP: 5S RGE: 2E

PERMANENT DATUM: GL
ELEV. OF PERM. DATUM: 181.0'
LOG MEASURED FROM: KB
DRLG. MEASURED FROM: ABOVE PERM. DATUM

DATE: 24 NOV 84
RUN NO: 1

DEPTH-DRILLER: 2808.0'
DEPTH-LOGGER: 2806.0'
BTM. LOG INTERVAL: 2798.0'
TOP LOG INTERVAL: 1604.0'

CASING-DRILLER: 1603'
CASING-LOGGER: 1604'
CASING: 8 5/8"
BIT SIZE: 7 7/8"
DEPTH: 2808'

RECEIVED - PILD
JAN 21 1985
DEPT. OF GEOLOGY
SACRAMENTO OFFICE

OTHER SERVICES-
SONIC
HDT
CST
DIL

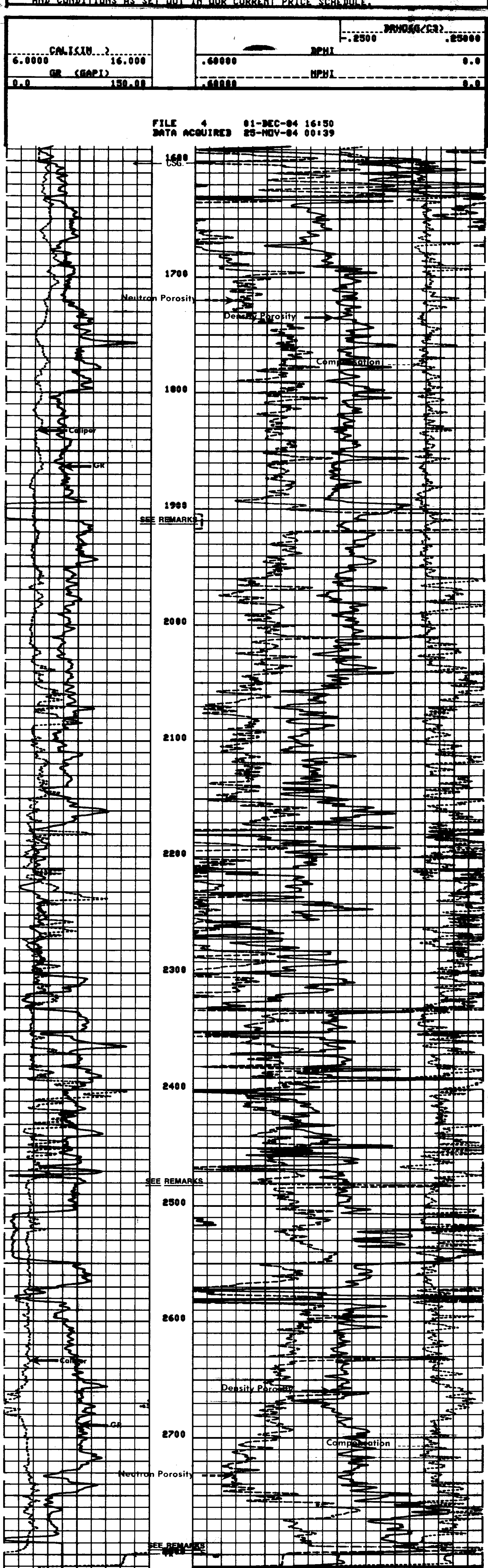
PROGRAM
TAPE NO:
SERV: 2
SERVICE
ORDER NO:
438177

TYPE FLUID IN HOLE: GEL/LIGND.
DENSITY: 9.3 LB/G
VISCOSITY: 46.0 S
PHI: 9.0
FLUID LOSS: 6.6 C3
SOURCE OF SAMPLE: FLOWLINE
RM: 3.260 DHMM AT 53.0 DEGF
RMF: 3.680 DHMM AT 45.0 DEGF
RMC: 2.790 DHMM AT 47.0 DEGF
SOURCE RMF/RMC: MEAS/MEAS
RM AT BHT: 1.880 DHMM AT 97.0 DEGF
RMF AT BHT: 1.840 DHMM AT 97.0 DEGF
RMC AT BHT: 1.448 DHMM AT 97.0 DEGF
TIME CIRC. STOPPED: 12:00 11-24
TIME LOGGER ON BTM.: 23:58 11-24
MAX. REC. TEMP: 97.0 DEGF
LOGGING UNIT NO: 8178
LOGGING UNIT LOC: SACRAMENTO
RECORDED BY: SUTER
WITNESSED BY: MEYER

FDC RECALIBRATED AND RECOMPUTED UPON RETURN TO SHOP.
SALINITY: 350 PPM CL-CENTRALIZATION: CMEZ AND RUBBER FINS

EQUIPMENT NUMBERS-
PGS 679 PDH 2045 GSR 8016 SFT 477
CNC 1208 CNB 3200 NLM 699 SGC 1528

ALL INTERPRETATIONS ARE OPINIONS BASED ON INFERENCES FROM ELECTRICAL OR OTHER MEASUREMENTS AND WE CANNOT, AND DO NOT GUARANTEE THE ACCURACY OR CORRECTNESS OF ANY INTERPRETATIONS, AND WE SHALL NOT, EXCEPT IN THE CASE OF GROSS OR WILLFUL NEGLIGENCE ON OUR PART, BE LIABLE OR RESPONSIBLE FOR ANY LOSS, COSTS, DAMAGES OR EXPENSES INCURRED OR SUSTAINED BY ANYONE RESULTING FROM ANY INTERPRETATION MADE BY ANY OF OUR OFFICERS, AGENTS OR EMPLOYEES. THESE INTERPRETATIONS ARE ALSO SUBJECT TO OUR GENERAL TERMS AND CONDITIONS AS SET OUT IN OUR CURRENT PRICE SCHEDULE.



SENSOR MEASURE POINT TO TOOL ZERO
NCNL 18.0 FEET GR 26.5 FEET
FFDC 2.7 FEET FCNL 18.0 FEET
CALI 2.7 FEET NFDC 2.7 FEET
NRAT 18.0 FEET TENS -.2 FEET

PARAMETERS

NAME	VALUE	UNIT	NAME	VALUE	UNIT
MC	CALI		PSNR	2.27000	
FB	1.00000	G/C3	MATR	SAND	
FDC	ALLD		MDEN	2.65000	G/C3
FEXP	2.00000		BHF	HATE	
BMS	OPEN		FNUM	1.00000	
BO	0.0	F	BS	7.87500	IN
PP	RECD				

TAPE NOT MADE