

COMPANY: DECON NATURAL GAS DEV/EL. CORP.  
WELL: HERRER 34-21  
FIELD: ST LOUIS  
COUNTY: DECON  
STATE: MISSISSIPPI  
LOCATION: 289.57' NORTH & 1585.31' EAST  
SEC: 21 T1N1 SE CORN. T1N1 S5  
REG: 24  
PERMANENT DATUM: GL  
ELEV. OF PERM. DATUM: 181.0 F  
LEG. MEASURED FROM PERM. DATUM: 181.0 F  
DEPT. MEASURED FROM: NS

DEPTH-GRILLER: 2800.0 F  
DEPT.-TO-LOG: 2800.0 F  
BTM: 2800.0 F  
TOP LOG INTERVAL: 1604.0 F  
CASING-DRILLER: 1603 F  
CASING-LOGGER: 1603 F  
CASTING: 8 5/8"  
BIT SIZE: 7 7/8"  
DEPTH: 2806 F

RECEIVED FILED  
JAN 21 1985  
SACRAMENTO

OTHER SERVICES:-  
HDT  
EST  
DIL

PROGRAM:  
26.2  
SERVISE  
ORDER NO:  
136171

TYPE FLUID IN HOLE: GEL/LIGNO.  
DENSITY: 9.3 LB/G  
VISCOSITY: 46.0 S  
PH: 9.0  
FLUID LOSS: 6.6 CS  
RM: 3.680 DHMM AT 53.0 DEG  
RMF: 3.680 DHMM AT 45.0 DEG  
RMC: 2.790 DHMM AT 47.0 DEG  
SOURCE RMF/RMC: MEAS/MEAS  
RM AT BHT: 1.680 DHMM AT 97.0 DEG  
RMF AT BHT: 1.440 DHMM AT 97.0 DEG  
RMC AT BHT: 1.448 DHMM AT 97.0 DEG

TIME CIRC. STOPPED: 12:00 11-24  
TIME LOGGER ON BTM.: 23:58 11-24

MAX. REC. TEMP: 97.0 DEGF

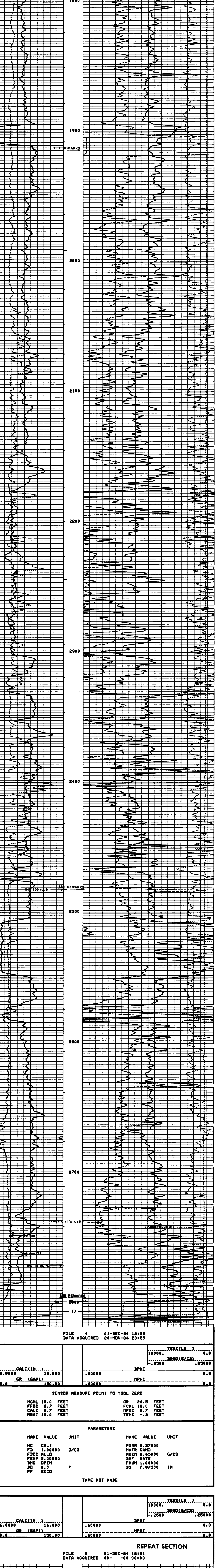
LOGGING UNIT NO: 8176  
LOGGING UNIT LOC: SACRAMENTO  
RECORDED BY: CUTER  
WITNESSED BY: MEYER

LOG RECALIBRATED AND RECOMPUTED UPON RETURN TO SHOP  
CALIBRATION INTERVAL AT 2789-2792, 2480-2484, 1990-1992  
SALINITY: 350 PPM CL  
CENTRALIZATION: CMG AND RUBBER TINS

EQUIPMENT NUMBERS:-  
PGS 679 PDH 2045 GSR 8016 SFT 477  
CNC 1208 CHB 3200 NLM 699 SGG 1528

ALL INTERPRETATIONS ARE OPINIONS BASED ON INFERENCE FROM ELECTRICAL OR OTHER MEASUREMENTS AND ARE NOT GUARANTEED. THE ACCURACY OR CORRECTNESS OF ANY INTERPRETATION IS NOT GUARANTEED. EXCEPT IN THE CASE OF GROSS OR OBVIOUS NEGLIGENCE ON OUR PART, WE ARE NOT RESPONSIBLE FOR ANY LOSS, COST, DAMAGE OR EXPENSE INCURRED OR SUSTAINED BY ANYONE IN CONNECTION WITH THE INTERPRETATION. WE ARE ALSO SUBJECT TO OUR GENERAL TERMS AND CONDITIONS OF SALE SET FORTH IN OUR CURRENT PRICE SCHEDULE.

COLLECTION: 6.0000 GR (GAPI) 16.0000  
DENSITY: 10000.00 DPHI 0.0  
GR (GAPI) 6.0000 DPHI 0.0



FILE 4 01-DEC-84 18:22  
DATA ACQUIRED 24-NOV-84 23:59

COLLECTION: 6.0000 GR (GAPI) 16.0000  
DENSITY: 10000.00 DPHI 0.0  
GR (GAPI) 6.0000 DPHI 0.0

SENSOR MEASURE POINT TO TOOL ZERO  
NCAL 18.0 FEET FCAL 26.5 FEET  
FFDC 2.7 FEET CALI 19.0 FEET  
NRAT 2.7 FEET NFDC 2.7 FEET  
TENS -2.2 FEET

PARAMETERS

NAME	VALUE	UNIT	NAME	VALUE	UNIT
HC	CALI	G/C3	PSNR	2.27000	
FD	1.00000		MATR	SAND	
FFDC	2.00000		NDEN	2.65000	G/C3
FEXP	2.00000		BHF	HATE	
BHS	OPEN	F	FNUM	1.00000	
DD	0.0		DS	7.97500	IN
PP	RECD				

TAPE NOT MADE

REPEAT SECTION

FILE 0 01-DEC-84 18:21  
DATA ACQUIRED 00--00 00:00

1700  
Density Porosity  
Compensation  
Neutron Porosity  
1800

REPEAT SECTION

FILE 5 01-DEC-84 18:21  
DATA ACQUIRED 25-NOV-84 00:46

COLLECTION: 6.0000 GR (GAPI) 16.0000  
DENSITY: 10000.00 DPHI 0.0  
GR (GAPI) 6.0000 DPHI 0.0

SENSOR MEASURE POINT TO TOOL ZERO  
NCAL 18.0 FEET FCAL 26.5 FEET  
FFDC 2.7 FEET CALI 19.0 FEET  
NRAT 2.7 FEET NFDC 2.7 FEET  
TENS -2.2 FEET

PARAMETERS

NAME	VALUE	UNIT	NAME	VALUE	UNIT
HC	CALI	G/C3	PSNR	2.27000	
FD	1.00000		MATR	SAND	
FFDC	2.00000		NDEN	2.65000	G/C3
FEXP	2.00000		BHF	HATE	
BHS	OPEN	F	FNUM	1.00000	
DD	0.0		DS	7.97500	IN
PP	RECD				

TAPE NOT MADE

AFTER SURVEY TOOL CHECK SUMMARY

PERFORMED: 84/11/25 (VERSION 26.2 00/00/00)  
PROGRAM FILE: ISN

CNTA TOOL CHECK  
NRAT BEFORE 2.113 AFTER 2.094  
POROSITY CHANGE (CLINE): -.002

PGTK TOOL CHECK  
FFDC BEFORE 340 AFTER 335 UNITS 474 CPS  
RHOB CHANGE (WATER): .009 G/C3

BEFORE SURVEY CALIBRATION SUMMARY

PERFORMED: 84/11/24 (VERSION 26.2 00/00/00)  
PROGRAM FILE: ISN

SGTE DETECTOR CALIBRATION SUMMARY

MEASURED	BKGD	JIG	CALIBRATED	UNITS
GR	67	219	165	GAPI

CNTA DETECTOR CALIBRATION SUMMARY

TANK	MEASURED	JIG	CALIBRATED
NRAT	2.27000	2.159	2.222
			2.113

PGTK DETECTOR CALIBRATION SUMMARY

BLOCK	MEASURED	JIG	CALIBRATED	UNITS
FFDC	522	337	595	340
				474

PGTK CALIPER CALIBRATION SUMMARY

MEASURED	SMALL	LARGE	CALIBRATED	SMALL	LARGE	UNITS
CALI	12.4	16.4	8.0	12.0		IN

SHOP SUMMARY

PERFORMED: 84/11/28 (VERSION 26.2 83/11/17)  
PROGRAM FILE: SHOP

CNTA DETECTOR CALIBRATION SUMMARY

TANK	MEASURED	JIG	CALIBRATED
NRAT	2.270	2.158	2.308
			2.194

(CNC1208, CHB3200)

SHOP SUMMARY

PERFORMED: 84/12/01 (VERSION 26.2 83/11/17)  
PROGRAM FILE: SHOP

PGTK DETECTOR CALIBRATION SUMMARY

BLOCK	MEASURED	JIG	CALIBRATED	UNITS
FFDC	461	327	588	365
NFDC	828	388	1000	405

(PGS:679 , PMI:1176, GSR:8016, SFT 1477)