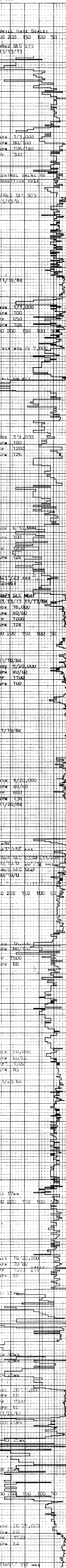


MUD DATA: W WEIGHT, V VISCOSITY, F FILTRATE, FC FILTER CAKE, SO SAND IN %

LEGEND: CB CORE BIT, WLCB WIRE LINE CB, OTHER DATA, LITHOLOGY SYMBOLS

REMARKS: WELL ELEV. GL. 181.00', SALINITY IN PPM CL-, FILTRATE IN CC/30 MIN., GAS TRAP, AGITATOR TYPE, MUD, LIGNOSULFONATE (BEAVER BUD), TAYLOR DRILLING RIG#4

DATE 11/15/64 to 11/24/64 DEPTH 240' to 2600' ENGINEERS J. DUVAL, B. PORTWOOD



DEPTH: 240, 300, 400, 500, 600, 700, 800, 900, 1000, 1100, 1200, 1300, 1400, 1500, 1600, 1700, 1800, 1900, 2000, 2100, 2200, 2300, 2400, 2500, 2600

LITHOLOGY and MUD ANALYSIS columns with detailed descriptions of rock types and gas analysis results.

REMARKS: MUD Data, Formation Tests, Core Analysis, Surveys, E Logs. Includes specific data for various depths such as 'WIPE HOLE', 'C 23U 60 VIS', 'C 22U 45 VIS', etc.