

COMPANY: OREGON NATURAL GAS DEVEL. CORP.
WELL: WERNER 34-21

FIELD: ST. LOUIS
COUNTY: MARION
STATE: OREGON

LOCATION: 389.57' NORTH & 1585.5' WE
FROM SE CORNER

SEC: 21 T1P: 55 RGE: 2M

PERMANENT DATUM: GL ELEVATIONS-
ELEV. OF PERM. DATUM: 181.0 F KB: 193.5 F
LOG MEASURED FROM: KB DF:
12.5 F ABOVE PERM. DATUM GL: 181.0 F
DRLG. MEASURED FROM: KB

DATE: 25 NOV 84
RUN NO: 1

DEPTH-DRILLER: 2808.0 F
DEPTH-LOGGER: 2806.0 F
BTM LOG INTERVAL: 2770.0 F
TOP LOG INTERVAL: 1604.0 F

CASING-DRILLER: 1603 F
CASING-LOGGER: 1604 F
CASING: 8 5/8"

BIT SIZE: 7 7/8"
DEPTH: 2808 F

RECEIVED - PILD
JAN 21 1985

DEPT. OF GEOLOGY
615 UNIVERSITY AVENUE
SACRAMENTO, CALIF.

OTHER SERVICES-
FDC/CNL/GR
HOT
CST
DIL

PROGRAM
TAPE NO:
26.2
SERVICE
ORDER NO:
432177

TYPE FLUID IN HOLE: GEL/LIGNO.
DENSITY: 9.3 LB/G
VISCOSITY: 46.0 S
PH: 9.0
FLUID LOSS: 6.6 CC
SOURCE OF SAMPLE: FLOWLINE
RM: 3.260 DHMM AT 53.0 DEG
RMF: 3.680 DHMM AT 45.0 DEG
RMC: 2.790 DHMM AT 47.0 DEG
SOURCE RMF/RMC: MEAS/MEAS
RM AT BHT: 1.917 DHMM AT 95.0 DEG
RMF AT BHT: 1.676 DHMM AT 95.0 DEG
RMC AT BHT: 1.477 DHMM AT 95.0 DEG

TIME CIRC. STOPPED: 12:00 11-24
TIME LOGGER ON BTM.: 16:31 11-24

MAX. REC. TEMP: 95.0 DEGF

LOGGING UNIT NO: 817E
LOGGING UNIT LOC: SACRAMENTO
RECORDED BY: SUTER
WITNESSED BY: MEYER

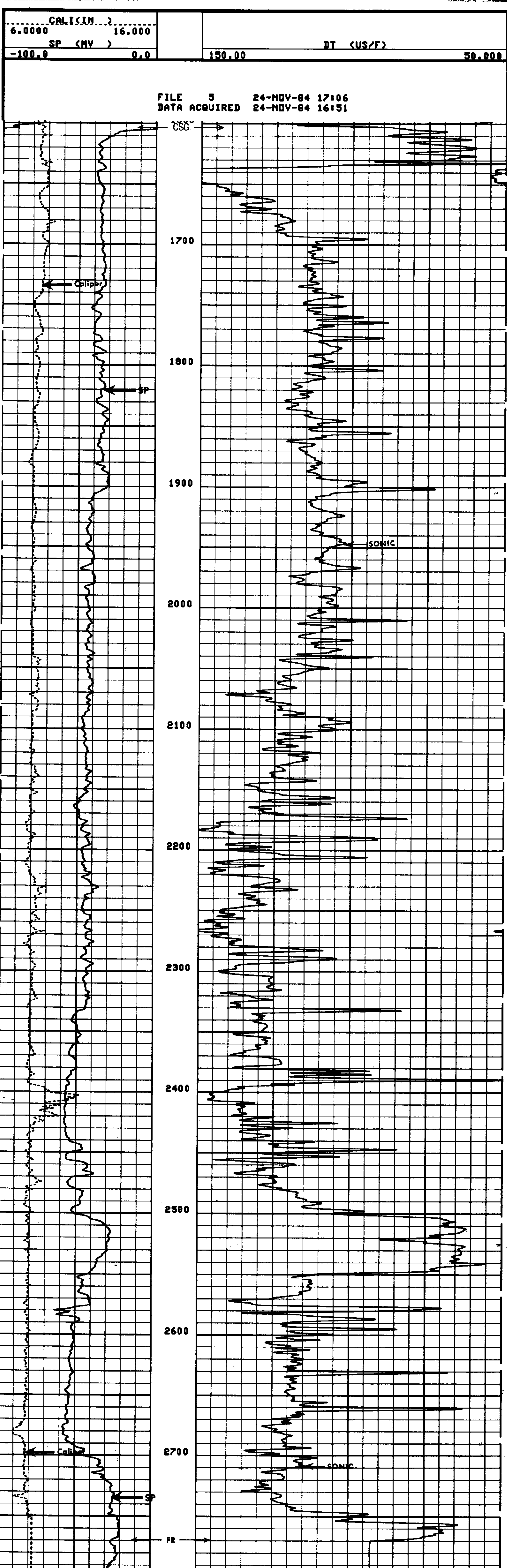
REMARKS:

SALINITY: 350 PPM CL-
CENTRALIZATION: CMEZ AND RUBBER FINS

EQUIPMENT NUMBERS-

DIS 1422 DIC 1149 MCD 1507 SLS 346
SLC 1321 IEM 686 SLM 1281 SOM 1033

ALL INTERPRETATIONS ARE OPINIONS BASED ON INFERENCES FROM ELECTRICAL OR OTHER MEASUREMENTS AND WE CANNOT, AND DO NOT GUARANTEE THE ACCURACY OR CORRECTNESS OF ANY INTERPRETATIONS; AND WE SHALL NOT, EXCEPT IN THE CASE OF GROSS OR WILLFUL NEGLIGENCE ON OUR PART, BE LIABLE OR RESPONSIBLE FOR ANY LOSS, COSTS, DAMAGES OR EXPENSES INCURRED OR SUSTAINED BY ANYONE RESULTING FROM ANY INTERPRETATION MADE BY ANY OF OUR OFFICERS, AGENTS OR EMPLOYEES. THESE INTERPRETATIONS ARE ALSO SUBJECT TO OUR GENERAL TERMS AND CONDITIONS AS SET OUT IN OUR CURRENT PRICE SCHEDULE.



CALISIN 6.0000 16.000
SP (MV) -100.0 0.0
DT (US/F) 150.00 50.000

SENSOR MEASURE POINT TO TOOL ZERO

CBL 37.0 FEET	TT4 37.0 FEET
TT3 33.3 FEET	TT2 37.0 FEET
TT1 36.0 FEET	SRAT 34.5 FEET
CALI 56.1 FEET	ILD 9.4 FEET
SFL 6.4 FEET	ILM 5.7 FEET
SP 2.5 FEET	SPAR 2.5 FEET
TENS 2.5 FEET	
NOIS 20.0 FEET	

PARAMETERS

NAME	VALUE	UNIT	NAME	VALUE	UNIT
HSV1	HF1		DHS	16	
DSIN	5	US	DDEL	200	US
CDTS	100.000		DHCD	512	
DTF	189.000	US/F	DTH	55.6000	US/F
SBR	1.00000	DHMM	DSEC	3.80000	MMHO
FPHI	SPHI		MSEC	3.40000	MMHO
FNUM	1.00000		FEXP	2.00000	
BS	7.87500	IN	BHS	OPEN	
PP	NORM		DD	0.0	F

TAPE NOT MADE