

EXLOG

COMPANY: AMOCO PRODUCTION COMPANY
 FIELD: AMOCO-KEYSERHAUSER B-1, ST#1
 WELL: WILD CAT
 REGION: DOUGLAS COUNTY, OREGON
 COORDINATES SEC. 13, T25S-R9E, W6E4M
 API WELL INDEX NO: 019-00027
 SPUD DATE: 9-22-64 (GL) 1435 (RB)
 ELEVATION: 1430 (GL) 1435 (RB)
 TOTAL DEPTH: 11,300'
 CONTRACTOR: PETER BAWDEN 21E
 RIG/TYPE: LAND TRIPLE

HOLE SIZE
 2 1/2" TO 10 1/2" TO
 17 1/2" TO 17 1/2" TO
 12 1/2" TO 11 3/4"

CASING RECORD
 20' AT 1006'
 13 3/8" AT 5200'

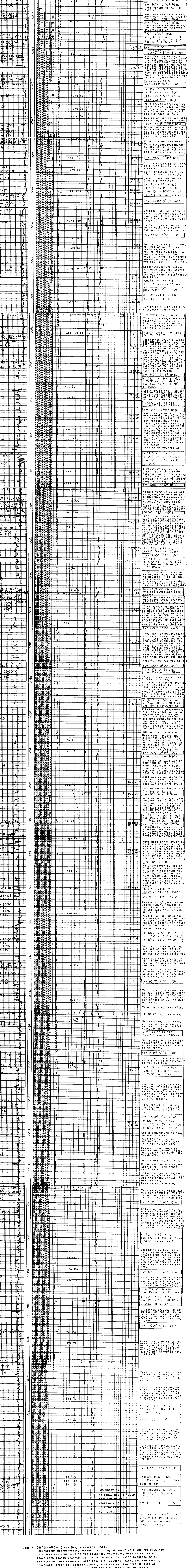
MUD TYPES
 L-1 LG TO 11 330'
 AT AT
 AT AT

LITHOLOGY SYMBOLS
 Limestone, Dolomite, Sandstone, Sand and Sandstone, Siltstone, Shale, Clay, Volcanic, Basalt, Tuff, Chert, Gypsum, Anhydrite and Gypsum, Halite, Salt and Sulfate.

EXLOG SUITE
 FORMATION EVALUATION LOG
 PRESSURE CALIBRATION LOG
 DRILLING DATA PRESSURE LOG
 X-RAY DATA PRESSURE LOG
 MUD RESISTIVITY LOG
 WIRELINE LOG RUN

ABBREVIATIONS
 NB: NEW BIT
 RRB: RUBBER BIT
 CW: CORE BIT
 WB: WEIGHT ON BIT
 RPM: REVOLUTIONS PER MINUTE
 FC: FLOW CHECK
 CR: CIRCULAR RETURNS
 PR: POOR RETURNS
 RPH: REVERSE ROTATION
 LG: LOGGED AFTERTRIP
 BG: BACKGROUND GAS
 STG: TRIP GAS
 STG SHORT
 CG: CONNECTION GAS
 SWG: SWAB GAS

FORMATION EVALUATION LOG



CORE #1 (8645FT-8654FT) CUT 9FT, RECOVERED 8.5FT.
 QUARTZ AND METAMORPHIC ALTERED, MOTTLED, OCCASIONAL OPEN VEIN
 OF SECONDARY SOME CALCITE VUG FILLINGS. OCCASIONAL OPEN VEIN
 OF FEET OF CORE ONLY CHLORITIZED, WITH ABUNDANT MAGNETITE AND
 OCCASIONAL GREEN SCHISTOSITY OCCURS, WAXY LUSTER, TWO FEET OF
 BASE IS DARK GRAY, SLIGHTLY CHLORITIZED WITH QUARTZ AND MAGNETITE.
 OCCASIONAL ROCK FRAGMENTS OF BASALT, FREQUENTLY CORE IS HIGHLY FRACTURED
 WITH HAIRLINE FRACTURES, OPEN AND GROWTH QUARTZ FILLED, THEREFORE VERY
 FRAGILE IN TOTAL; GOOD TRACE OF CHALCEDONY.

CORE #2 (11187FT-11204FT) CUT 17FT, RECOVERED 17FT.
 BASALT; DARK GREEN TO BLACK AND OCCASIONALLY DARK GRAY, SHORTLY ALTERED
 EXTENSIVELY CHLORITIZED, EXTENSIVE PALE WHITE ZEOLITES. OCCASIONALLY VEIN
 FILLING, AS AS VUG FILLING, AND AS MEGACRYSTALS TO 2 INCH IN DIAMETER.
 NUMEROUS SLICKENSIDES WITH EXTENSIVE CHLORITIZATION.

LOG ORIGINAL HOLES
 FROM DOG TO 7425'
 SIDETRACK NO.
 DRILLED FROM 8645'
 TO 11,300'