

COMPANY AMOCO PRODUCTION CO.

"A SERVICE TO THE OIL AND GAS INDUSTRY"

AREA IVERS PEAK

LOCATION 16731 FNL 1906" FEL Sec. 10; T2S8; R10W; W8M

COUNTY, STATE COOS COUNTY, OR.

LITHOLOGY SYMBOLS

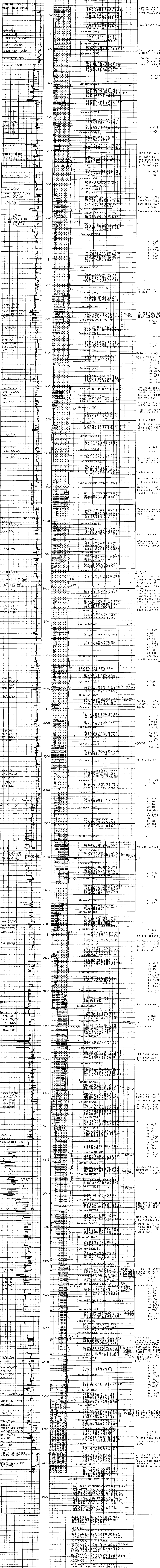
REMARKS

MUD DATA
W WEIGHT
V VISCOSITY
F FILTERATE
FC FILTER CAKE
SD SAND IN %

LEGEND
CB CORE BIT
MCCORRE LINE CB
OTHER DATA
CG TRIP GAS
CG CONNECTION GAS
C CARRYING GAS

WELL ELEV. CL. 880'
SALINITY PER MIL
FILTRATE IN CC/30 MIN.
GAS TRAP AGITATOR TYPE
MUD GEL BAR 100
TAYLOR DRILLING RIG #4

DATE 6/12/85 to 9/6/85 DEPTH 80' to 4429 FT. ENGINEERS BUTLER HALLS



AMOCO PRODUCTION CO. 16731 FNL 1906" FEL Sec. 10; T2S5; R10W; W8M COOS COUNTY, OREGON, USA