

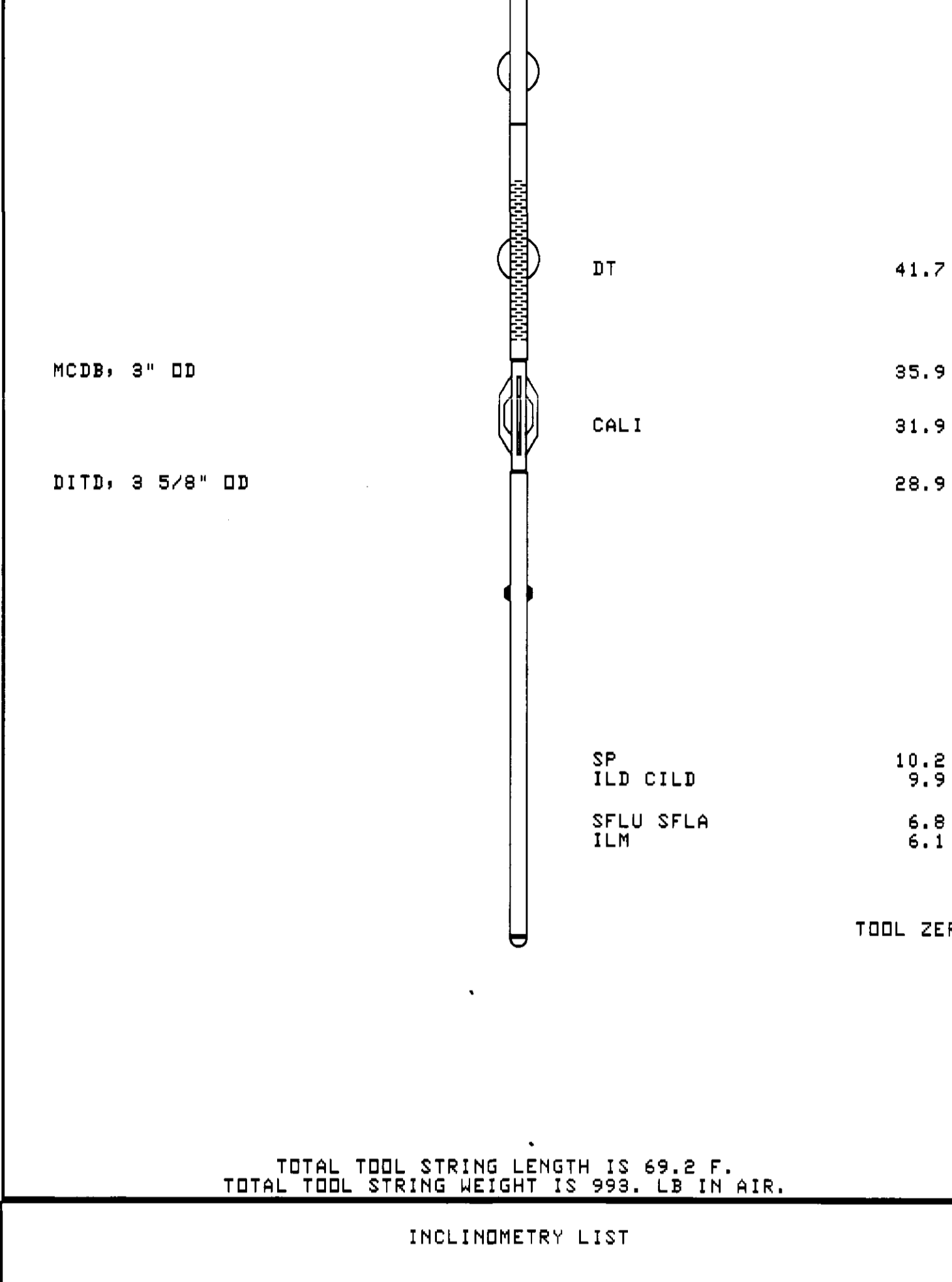
DATE 25-OCT-1992  
COUNTY COLUMBIA STATE OREGON  
LOCATION 1885 E AND 274 S  
WELL FISHHAWK/WILSON 11A-5-65 RD#1  
COMPANY NAHAMA AND WEAGANT ENERGY CO.  
FROM THE NW CORNER OF SECTION 16, T4P 60N, R11E, DISTRICT OF MIST  
PERMITS 36-009 00296  
LOGGING MEASURED FROM KB 8225 @ 508.0 F  
DATE 25-OCT-1992  
RUN NO. ONE  
DEPTH DRILLER 2770.0 F  
DEPTH LOGGERS (SHELL) 2799.0 F  
STRT LOG INTERVAL 508.0 F  
Casing-Driller 8225 @ 508.0 F  
Casing-Logger 7875 @ 2770.0 F  
BIT Size 508.0 F  
Type Fluid In Hole CGL DMSPVAC  
DRILLING MEASUREMENTS  
FID. LOSS 8.5  
FID. LOSS 60.3  
Source of Sample 11 OMINI  
Firm @ Meas. Temp. 1980 C/Min @ 77.0 DEG  
Firm @ Meas. Temp. 2440 C/Min @ 60.0 DEG  
Firm @ Meas. Temp. 2180 C/Min @ 60.0 DEG  
Source: Rmt 1199 C/Min @ 98.0 DEG  
Rmt @ BHT 25 OCT 92 10:00  
M. Logger on Bottom 98.0 DEG  
Max. Rec. Temp. 98.0 DEG  
Location SACHAMMINTO  
Recorded by JOHN OHN /  
Witnessed by LUCAS / P/MO/TI

The well name, location and borehole reference data were furnished by the customer  
All interpretations are opinions based on inferences from electrical or other measurements and we cannot, and do not, guarantee the accuracy or correctness of any interpretations, and we shall not, except in the case of gross or willful negligence on our part, be liable or responsible for any loss, costs, damages or expenses incurred or sustained by anyone resulting from any interpretations made by any of our officers, agents or employees. These interpretations are also subject to Clause 4 of our General Terms and Conditions as set out in our current Price Schedule.

Run No.	ONE
Service Order No.	58574
Drilling Fluid Level	20.0 F
Salinity	1050.0 PPM
Rmt @ BHT	1587 CHMM @ 88.0 DEG
Rmo @ BHT	1387 CHMM @ 88.0 DEG
Logging Speed	3800.0 F/H
EQUIPMENT DATA	
Tool Number 1	DIS-EC 288
Tool Number 2	DIC-EB 1078
Tool Number 3	SLS-MA 1328
Tool Number 4	SLS-WA 1428
Tool Number 5	SGC-JC 680
Tool Number 6	MCD-DA 663
Tool Number 7	SLM-DA 428
Tool Number 8	NLM-BC 418
Tool Number 9	IEM-BD 304
Tool Number 10	
Tool Number 11	
Tool Number 12	

REMARKS:  
TWO CMEZ'S AND ONE STANDOFF RUN  
TO CENTRALIZE SONIC  
TWO RUBBER STANDOFFS RUN ON DIL  
HOLE DEVIATED 18.75 DEGREES AT 2400'  
TAYLOR DRILLING RIG #7  
HOLE SIDETRACKED AT 592'  
THANK YOU FOR USING SCHLUMBERGER

LOGGING TOOL STRING SKETCH



TOTAL TOOL STRING LENGTH IS 69.2 F.  
TOTAL TOOL STRING HEIGHT IS 993. LB IN AIR.

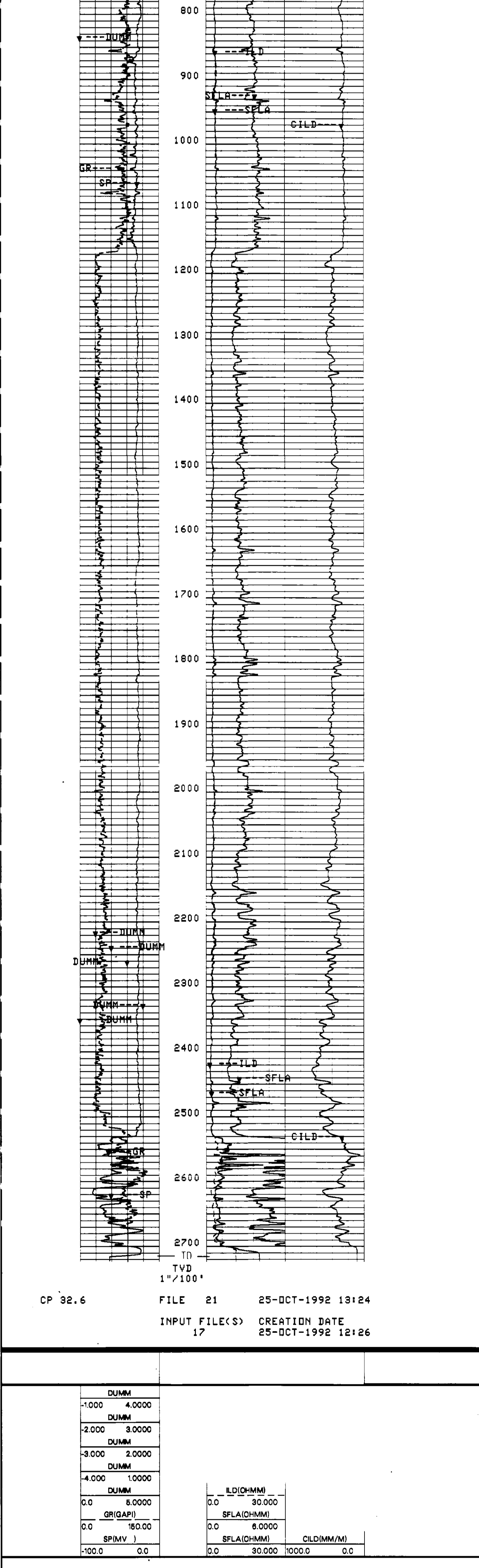
INCLINOMETRY LIST

TIE DEPTH	MEAS. DEPTH	DEVI	TVD
	509.0 FEET	0.0 DEG	509.0 FEET
	614.0 FEET	0.50 DEG	614.0 FEET
	677.0 FEET	2.50 DEG	677.0 FEET
	737.0 FEET	5.25 DEG	736.8 FEET
	799.0 FEET	8.25 DEG	798.4 FEET
	862.0 FEET	10.00 DEG	860.6 FEET
	923.0 FEET	13.00 DEG	920.4 FEET
	1100.0 FEET	11.75 DEG	1093.3 FEET
	1256.0 FEET	12.00 DEG	1246.0 FEET
	1417.0 FEET	11.50 DEG	1403.6 FEET
	1571.0 FEET	10.75 DEG	1554.7 FEET
	1790.0 FEET	10.00 DEG	1770.1 FEET
	1951.0 FEET	9.75 DEG	1928.7 FEET
	2014.0 FEET	11.00 DEG	1992.7 FEET
	2077.0 FEET	11.00 DEG	2052.6 FEET
	2138.0 FEET	12.50 DEG	2112.3 FEET
	2200.0 FEET	14.00 DEG	2172.6 FEET
	2263.0 FEET	15.50 DEG	2233.6 FEET
	2325.0 FEET	17.00 DEG	2293.1 FEET
	2418.0 FEET	18.75 DEG	2381.6 FEET
	2485.0 FEET	18.75 DEG	2445.0 FEET
	2770.0 FEET	18.00 DEG	2715.5 FEET

CP 32.6 FILE 21 25-OCT-1992 13:34

DUMM	ILD(OHMM)
-1000 4.0000	0.0 30.000
DUMM	SFLA(OHMM)
-2.000 3.0000	0.0 8.0000
DUMM	SFLA(OHMM) CILD(MM/M)
-3.000 2.0000	0.0 30.000 1000.0 0.0
DUMM	
-4.000 1.0000	
DUMM	
0.0 5.0000	
GR(GAP)	
0.0 160.00	
SP(MV )	
-100.0 0.0	

CP 32.6 FILE 21 25-OCT-1992 13:34  
INPUT FILE(S) 17 CREATION DATE 25-OCT-1992 12:26



CP 32.6 FILE 21 25-OCT-1992 13:34  
INPUT FILE(S) 17 CREATION DATE 25-OCT-1992 12:26

SENSOR MEASURE POINT TO TOOL ZERO

SRAT	41.7 FEET	AMPL	44.1 FEET
CBFS	43.1 FEET	CBL	44.1 FEET
TT4	44.1 FEET	TT1	43.1 FEET
TT	39.8 FEET	TT3	40.3 FEET
TT	44.1 FEET	TO	44.1 FEET
CBST	44.1 FEET	TTSL	44.1 FEET
CALI	31.9 FEET	GR	62.7 FEET
ILM	6.1 FEET	ILD	9.9 FEET
SP	2.5 FEET	SFL	6.8 FEET
TENS	2.5 FEET	SPAR	2.5 FEET
NOIS	2.5 FEET		

PARAMETERS

NAME	VALUE	UNIT	NAME	VALUE	UNIT
SMB	DISA		TOCA	DISA	
RATE	15	HZ	DG	75	
DETE	E2		AMPL	2	
CBT	UT		WFM	1	
SS	FAST		TOD	DISA	
DTF	189.000	US/F	DTM	56.0000	US/F
CDTS	100.000		SPFS	R-H	
PP	NDRM		DO	0.0	F
WMUD	10.0000	LB/G	MSEC	5.90000	MM/M
SBR	1.00000	DHMM	DSEC	6.60000	MM/M
FCD	5.50000	IN	NCJT	GSRV	
FPHI	SPHI		DWCO	512	
DSIN	5	F	DDEL	200	US
SPVD	0.0	F	SINT	10.0000	M
BS	7.87500	IN	BHS	OPEN	