

COMPANY NAHAMA AND WEAGANT ENERGY CO.
 WELL FISHAWK/WILSON 11A-5-85 RD#1
 FIELD MIST
 COUNTY COLUMBIA STATE OREGON
 LOCATION 1288 E. AND 274 S
 FROM THE NW CORNER OF
 SECTION 5 RANGE 5W T10 F
 ELEVATION 600.0 F
 ABOVE PAVEMENT DATUM
 COUNTY COLUMBIA STATE OREGON
 LOCATION 1288 E. AND 274 S
 FROM THE NW CORNER OF
 SECTION 5 RANGE 5W T10 F
 ELEVATION 600.0 F
 ABOVE PAVEMENT DATUM

The well name, location and borehole reference data were furnished by the customer.

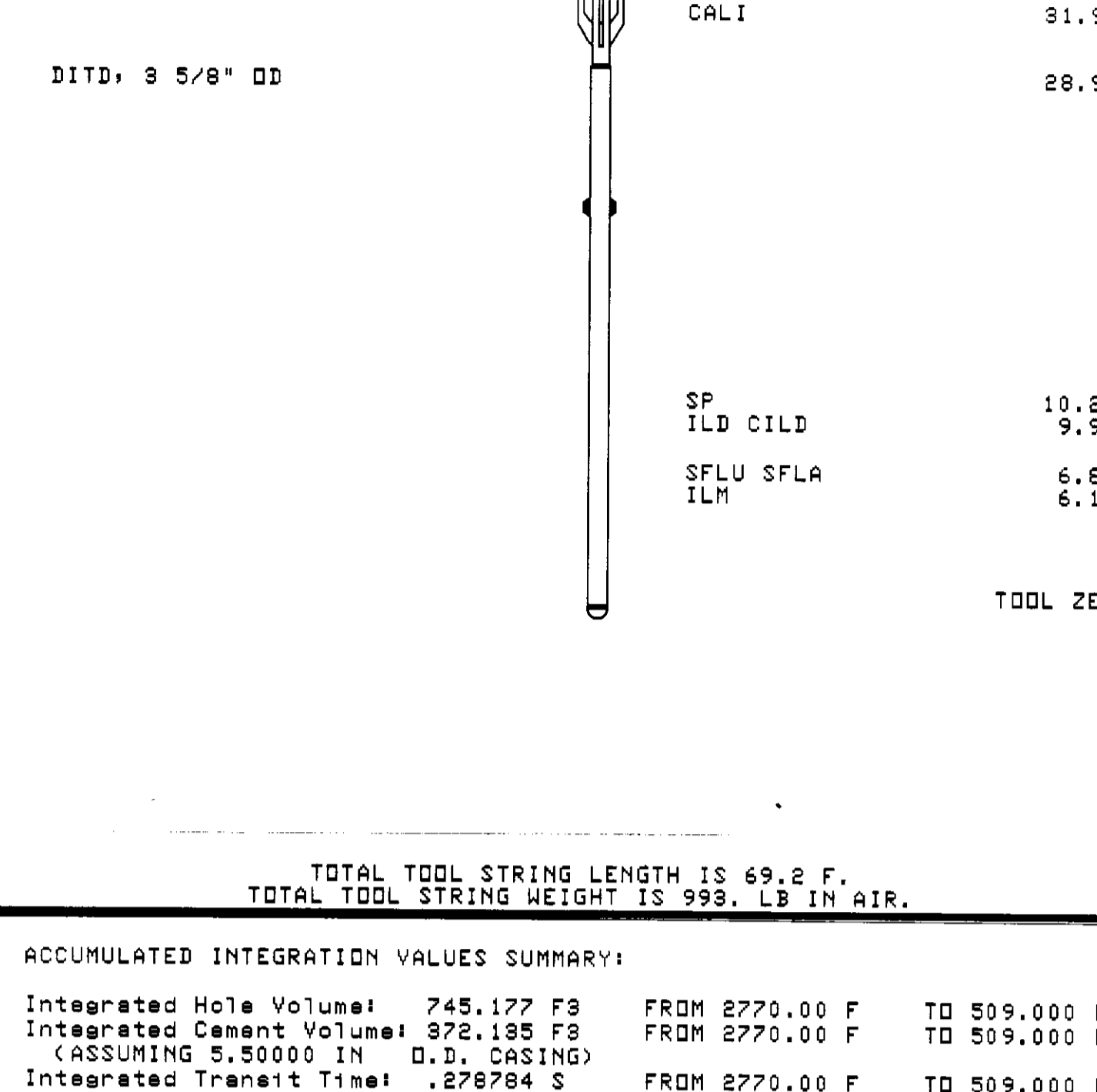
All interpretations are opinions based on inferences from electrical or other measurements and we cannot, and do not, guarantee the accuracy or correctness of any interpretations, and we shall not, except in the case of gross or willful negligence or our part, be liable or responsible for any loss, costs, damages or expenses incurred or sustained by anyone resulting from any interpretations made by any of our officers, agents or employees. These interpretations are also subject to Clause 4 of our General Terms and Conditions as set out in our current Price Schedule.

| | |
|----------------------|------------------------|
| Run No. | ONE |
| Service Order No. | 585174 |
| Drilling Fluid Level | 20.0 F |
| Salinity | 1050.0 PPM |
| Rim @ BHT | 1357 OHMM @ 88.0 DEG F |
| Rim @ BHT | 1397 OHMM @ 88.0 DEG F |
| Logging Speed | 3600.0 F/HR |

| EQUIPMENT DATA | |
|----------------|-------------|
| Tool Number 1 | DIS-EC 298 |
| Tool Number 2 | DIC-ES 3378 |
| Tool Number 3 | SLS-WA 1228 |
| Tool Number 4 | SLS-WA 1429 |
| Tool Number 5 | SGC-C 860 |
| Tool Number 6 | MCD-DA 653 |
| Tool Number 7 | SLS-MA 428 |
| Tool Number 8 | NM-BC 418 |
| Tool Number 9 | EM-BD 304 |
| Tool Number 10 | |
| Tool Number 11 | |
| Tool Number 12 | |

REMARKS:
 TWO CMEZ'S AND ONE STANDOFF RUN TO CENTRALIZE SONIC
 TWO RUBBER STANDOFFS RUN ON DRIL HOLE DEVIATED 2.78 DEGREES AT 2400'
 TAYLOR DRILLING RIG #7
 HOLE SIDETRACKED AT 592'
 THANK YOU FOR USING SCHLUMBERGER

LOGGING TOOL STRING SKETCH



TOTAL TOOL STRING LENGTH IS 69.2 F.
 TOTAL TOOL STRING WEIGHT IS 993. LB IN AIR.

ACCUMULATED INTEGRATION VALUES SUMMARY:

| | | | |
|-----------------------------------|------------|----------------|--------------|
| Integrated Hole Volume: | 745.177 F3 | FROM 2770.00 F | TO 509.000 F |
| Integrated Cement Volume: | 372.185 F3 | FROM 2770.00 F | TO 509.000 F |
| (ASSUMING 5.50000 IN O.D. CASING) | | | |
| Integrated Transit Time: | .276784 S | FROM 2770.00 F | TO 509.000 F |

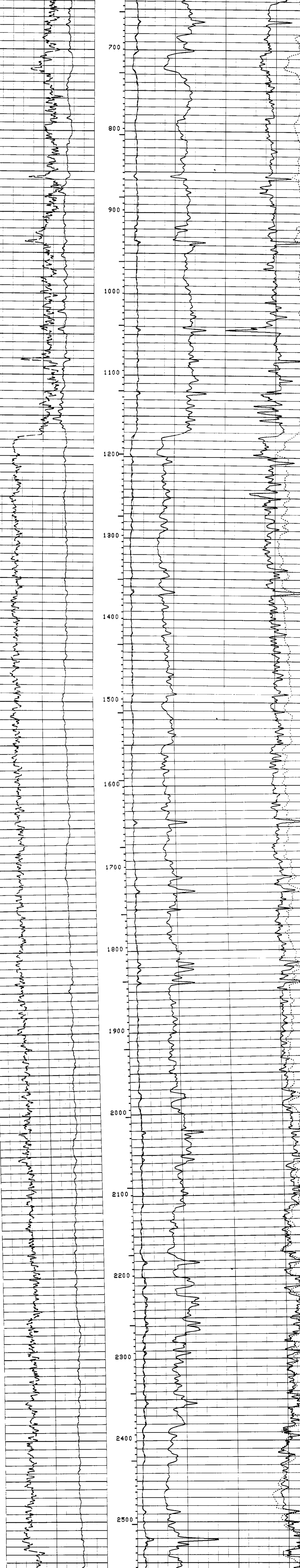
EVENT MARK SUMMARY:

| OUTPUT | INTERVAL BETWEEN PIPS | DEPTH TRACK EDGE |
|-------------------------|-----------------------|------------------|
| Integrated Transit Time | .00100000 S | RIGHT EDGE |

| | | |
|----------|-----|--------|
| GR(GAPI) | 0.0 | 150.00 |
| SP(MV) | 0.0 | 0.0 |

| | | |
|------------|-----|---------------|
| LD(OHMM) | 0.0 | 30.000 |
| SFLA(OHMM) | 0.0 | 6.0000 1000.0 |
| SFLA(OHMM) | 0.0 | 30.000 175.00 |

CP 32.6 FILE 4 30-OCT-1992 07:57
 INPUT FILE(S) 17 CREATION DATE 25-OCT-1992 12:26



CP 32.6 FILE 4 30-OCT-1992 07:50
 INPUT FILE(S) 17 CREATION DATE 25-OCT-1992 12:26

| | | |
|----------|-----|--------|
| GR(GAPI) | 0.0 | 150.00 |
| SP(MV) | 0.0 | 0.0 |

| | | |
|------------|-----|---------------|
| LD(OHMM) | 0.0 | 30.000 |
| SFLA(OHMM) | 0.0 | 6.0000 1000.0 |
| SFLA(OHMM) | 0.0 | 30.000 175.00 |

SENSOR MEASURE POINT TO TOOL ZERO
 MCDB 31.9 FEET
 DTT 2.5 FEET
 SLTQ 44.1 FEET
 SGTE 62.7 FEET
 DITD 9.9 FEET

PARAMETERS

| NAME | VALUE | UNIT | NAME | VALUE | UNIT |
|------|----------|------|------|---------|------|
| SMB | DISA | Hz | TOCA | DISA | |
| REP | 1.0 | | SRPL | 0.0 | |
| CBL | UT | | WFM | 1 | |
| SS | FAST | | TOD | DISA | |
| DTF | 189.0000 | US/F | SPS | RH | |
| CBTS | 100.0000 | | DD | 0.0 | |
| PP | NDRM | | MSEC | 5.90000 | MM/M |
| HMUD | 10.0000 | LB/G | DSEC | 6.60000 | MM/M |
| SBR | 1.00000 | OHMM | NCJT | GSRV | |
| FCD | 5.50000 | IN | DWCD | 512 | |
| FPHI | SPHI | US | DDEL | 200 | |
| DSIN | 5 | IN | BHS | OPEN | |
| BS | 7.87500 | IN | | | |

| | | | |
|---------|-------------------------------|----------|------------|
| COMPANY | NAHAMA AND WEAGANT ENERGY CO. | SCHL. FR | 2763.0 F |
| WELL | FISHAWK/WILSON 11A-5-85 RD#1 | SCHL. TD | 2769.0 F |
| FIELD | MIST | DRLR. TD | 2770.0 F |
| COUNTY | COLUMBIA | Elev. | KB 618.0 F |
| STATE | OREGON | DB | |
| | | QL | 804.0 F |