

| | | | |
|----------------------|-------------|-------------------|-------------------------------|
| Run No. | 01 | CO. LINE | |
| Service Order No. | 88570 | LOCATION | 18815 AND 214'S |
| Drilling Fluid Level | 8.5 F | FIELD | "FISHAWK/WILSON" #11A-55 |
| Battery | 8000 PPM | COMPANY | NAHAMA AND WEAGANT ENERGY CO. |
| Rmt @ BHT | 2433 CHMM | WELL | "FISHAWK/WILSON" #11A-55 |
| Rmo @ BHT | 1488 CHMM | FIELD | MIST |
| Logging Speed | 3500 C F/HR | COUNTY | COLUMBIA |
| EQUIPMENT DATA | | STATE | OREGON |
| Tool Number 1 | SPCS-8 845 | Other Services | |
| Tool Number 2 | SPCS-A 884 | SPCT | SC01 |
| Tool Number 3 | MCD-DA 1237 | FMN | FMN |
| Tool Number 4 | "CC-B 863 | SN | SN |
| Tool Number 5 | "CM-AB 317 | EMV | EMV-KARASO F |
| Tool Number 6 | | Log Measured From | DB |
| Tool Number 7 | | Log Measured From | DB |
| Tool Number 8 | | Log Measured From | DB |
| Tool Number 9 | | Log Measured From | DB |
| Tool Number 10 | | Log Measured From | DB |
| Tool Number 11 | | Log Measured From | DB |
| Tool Number 12 | | Log Measured From | DB |

The well name, location and borehole reference data were furnished by the customer.

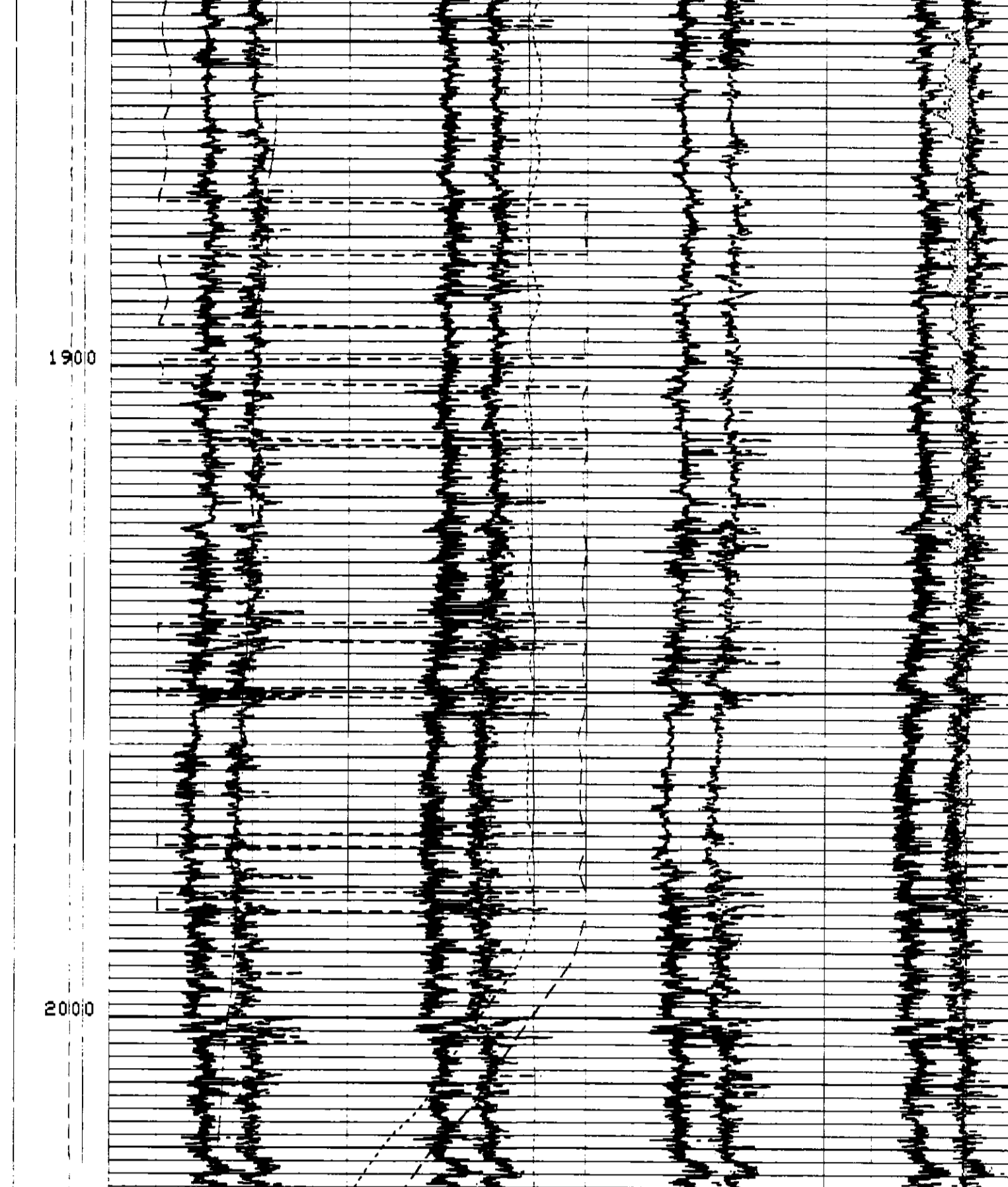
All interpretations are opinions based on inferences from electrical or other measurements and we cannot, and do not, guarantee the accuracy or correctness of any interpretations, and we shall not, except in the case of gross or willful negligence on our part, be liable or responsible for any loss, costs, damages or expenses incurred or sustained by anyone resulting from any interpretations made by any of our officers, agents or employees. These interpretations are also subject to Clause 4 of our General Terms and Conditions as set out in our current Price Schedule.

| | |
|----------------------|----------------------|
| Run No. | One |
| Service Order No. | 88570 |
| Drilling Fluid Level | 8.5 F |
| Battery | 8000 PPM |
| Rmt @ BHT | 2433 CHMM @ 98.0 DEG |
| Rmo @ BHT | 1488 CHMM @ 98.0 DEG |
| Logging Speed | 3500 C F/HR |

| | |
|----------------|-------------|
| Tool Number 1 | SPCS-8 845 |
| Tool Number 2 | SPCS-A 884 |
| Tool Number 3 | MCD-DA 1237 |
| Tool Number 4 | "CC-B 863 |
| Tool Number 5 | "CM-AB 317 |
| Tool Number 6 | |
| Tool Number 7 | |
| Tool Number 8 | |
| Tool Number 9 | |
| Tool Number 10 | |
| Tool Number 11 | |
| Tool Number 12 | |

REMARKS:

LOGGING TOOL STRING SKETCH

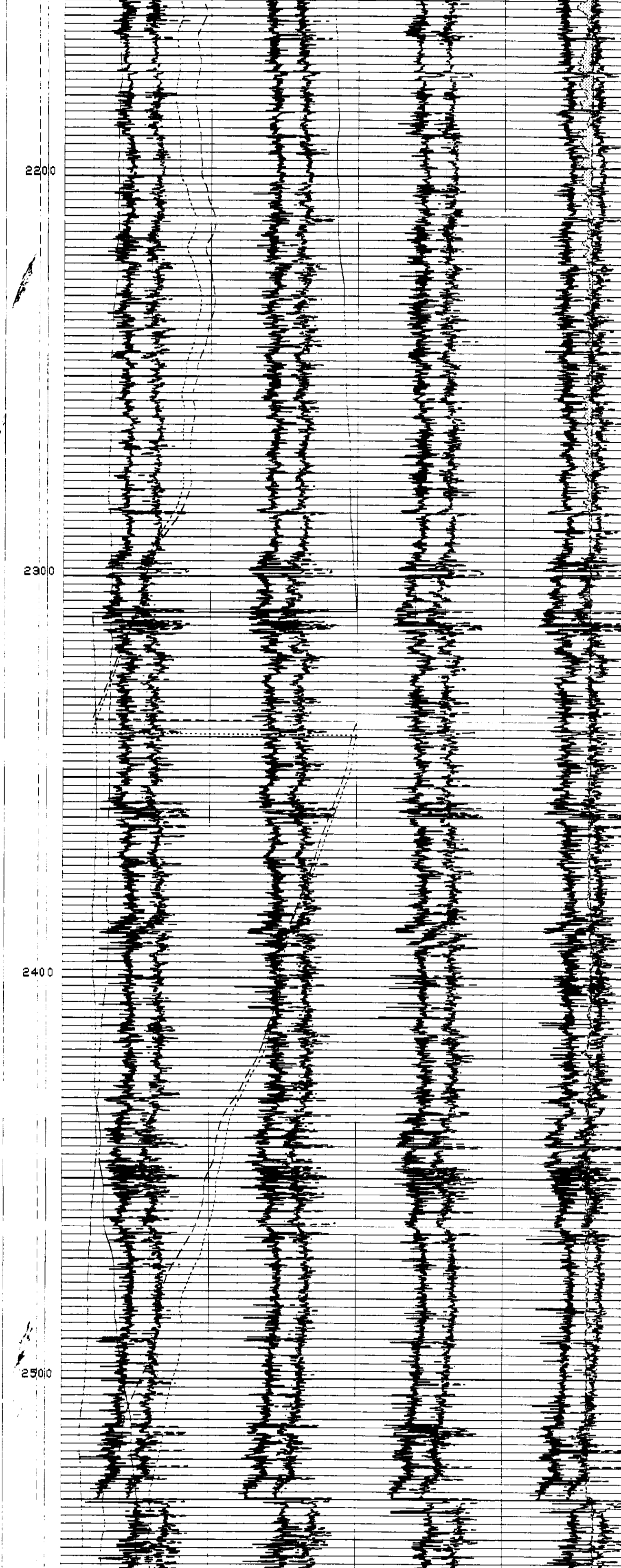


TOTAL TOOL STRING LENGTH IS 27.9 F.
TOTAL TOOL STRING HEIGHT IS 457. LB IN AIR.

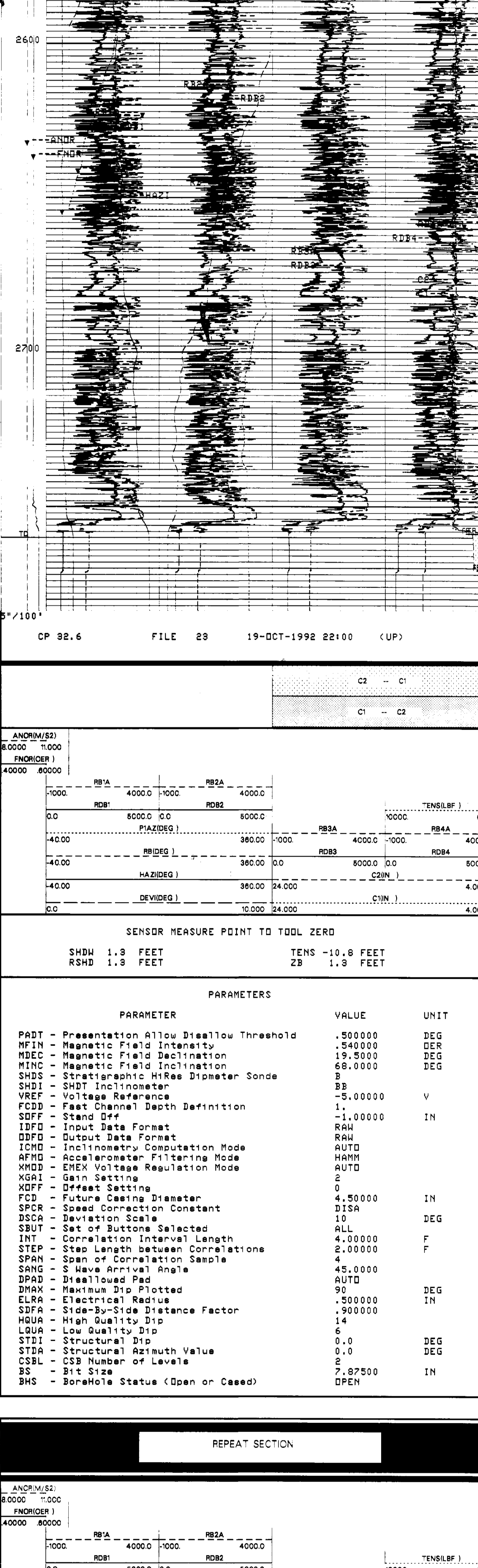
MAIN LOG

SPEED CORRECTION NOT APPLIED

NO KNUCKLE JOINT IS USED (SDFF = -1)



CP 32.6 FILE 23 19-OCT-1992 22:26 (UP)



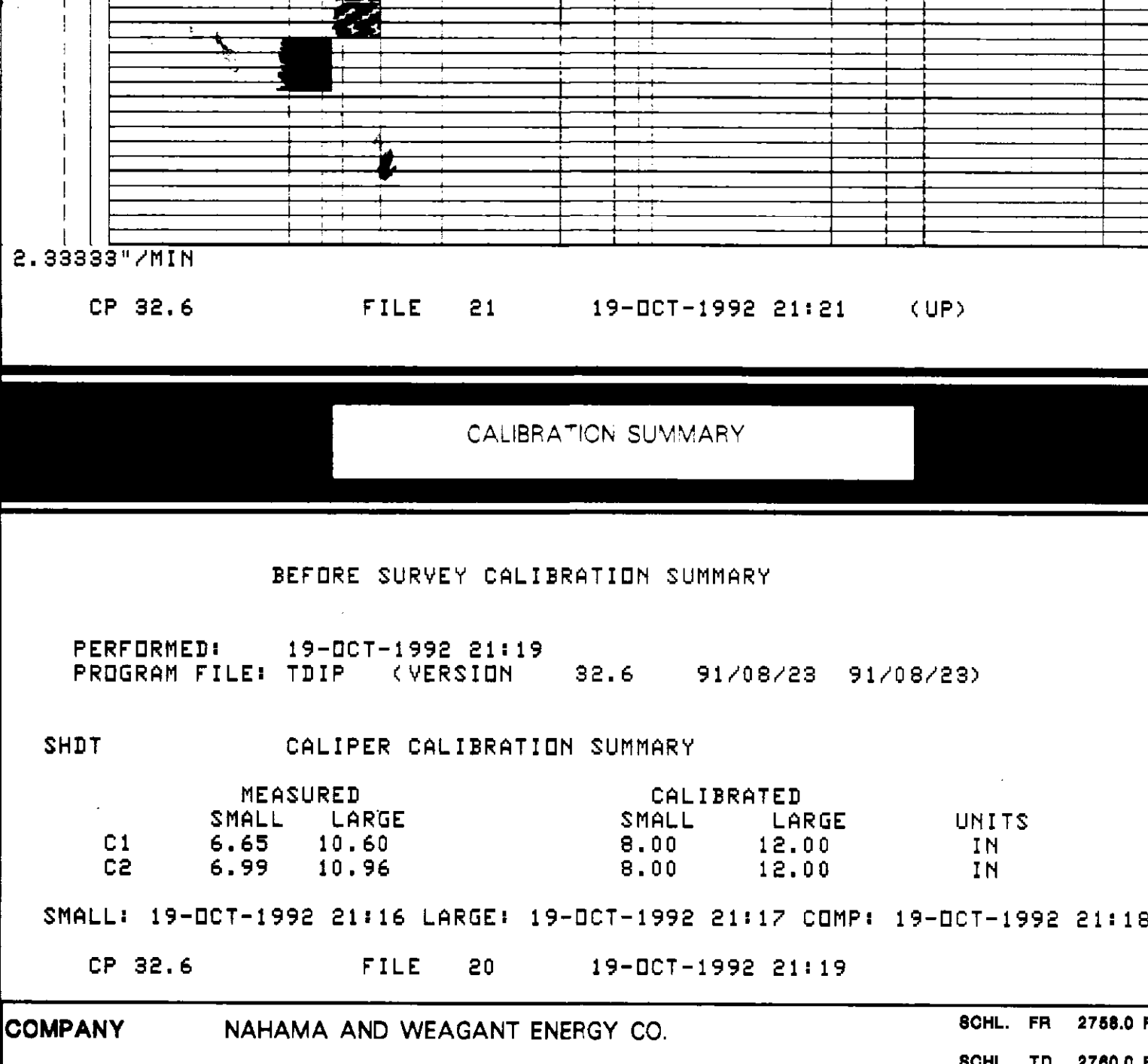
CP 32.6 FILE 23 19-OCT-1992 22:00 (UP)

Sensor Measure Point to Tool Zero
SHDW 1.3 FEET TENS -10.8 FEET
RSHD 1.3 FEET ZB 1.3 FEET

PARAMETERS

| PARAMETER | VALUE | UNIT |
|--|----------|------|
| PRDT - Presentation Allow Disallow Threshold | .500000 | DEG |
| MFIN - Magnetic Field Intensity | 1.540000 | DEG |
| MDCC - Magnetic Field Declination | 19.5000 | DEG |
| MINC - Magnetic Field Inclination | 68.0000 | DEG |
| SHDS - Stratigraphic High Res Dipmeter Sonde | B | |
| SHDI - SHDT Inclination | BB | |
| VREF - Voltage Reference | -5.00000 | V |
| FCDD - Fast Channel Depth Definition | 1 | |
| SDFF - Stand Off | -1.00000 | IN |
| IDFF - Input Data Format | RAW | |
| ODFF - Output Data Format | AUTO | |
| ICMD - Inclination Computation Mode | AUTO | |
| AFND - Accelerometer Filtering Mode | HMM | |
| XMDD - EMEX Voltage Regulation Mode | AUTO | |
| XGRA - Gain Settings | 2 | |
| INT - Inclination Computation Mode | DISA | IN |
| SPCR - Speed Correction Constant | 10 | DEG |
| DSCA - Deviation Scale | 10 | DEG |
| SBUT - Set of Buttons Selected | ALL | |
| INT - Correlation Interval Length | 2.00000 | F |
| STEP - Step Length between Correlations | 2.00000 | F |
| SPAN - Span of Correlation Sample | 4 | |
| SMAG - S Wave Arrival Angle | 45.0000 | |
| HQDA - High Quality Dip | 1.900000 | |
| LGUA - Low Quality Dip | 14 | |
| STDI - Structural Dip | 0.0 | DEG |
| STDA - Structural Azimuth Value | 0.0 | DEG |
| CSBL - CSB Number of Levels | 2 | |
| BS - Bit Size | 7.87500 | IN |
| BHS - Borehole Status (Open or Cased) | OPEN | |

REPEAT SECTION



CP 32.6 FILE 22 19-OCT-1992 21:48 (UP)

PAD SCRATCH

CP 32.6 FILE 21 19-OCT-1992 21:23 (UP)

CP 32.6 FILE 21 19-OCT-1992 21:21 (UP)

CALIBRATION SUMMARY

BEFORE SURVEY CALIBRATION SUMMARY

PERFORMED: 19-OCT-1992 21:19
PROGRAM FILE: TDIP (VERSION 32.6 91/08/23 91/08/23)

SHDT CALIPER CALIBRATION SUMMARY

| MEASURED | LARGE | SMALL | LARGE | UNITS |
|----------|-------|-------|-------|-------|
| C1 | 6.65 | 10.50 | 8.00 | IN |
| C2 | 6.99 | 10.96 | 8.00 | IN |

SMALL: 19-OCT-1992 21:16 LARGE: 19-OCT-1992 21:17 COMP: 19-OCT-1992 21:18

CP 32.6 FILE 20 19-OCT-1992 21:19

COMPANY NAHAMA AND WEAGANT ENERGY CO. SCHL. FR 2768.0 F

WELL "FISHAWK/WILSON" #11A-5-65 SCHL. TD 2760.0 F

FIELD MIST ORL. TD 2760.0 F

COUNTY COLUMBIA STATE OREGON Elev. KB 816.0 F

GL 804.0 F