



Bakersfield, CA (805) 397-7472

Ventura, CA (805) 658-7708

Anchorage, AK (907) 561-2474

COMPANY NAHAMA & WEGANT ENERGY CO.

WELL FISHBANK/WILSON 11A-5-65

FIELD

LOCATION 1385' East and 274' South from the Northwest corner of Section 5, T6S, R5E, W. 4.

COUNTY, STATE Columbia, Oregon

API WELL INDEX NO. 36-009-00296

ELEVATION 604' GL. 615' KB.

DATES 10-13-92 TO 10-14-92

DEPTH 40' TO 2765'

SPUD DATE 10-12-92

DRILLING CONTRACTOR Taylor Drilling RIG #71

COMPANY GEOLOGIST Jeff Vaughan

COMPANY DRILLING SUP. Rob Lucas

MUD COMPANY Beaver Drilling Fluids

MUD TYPE Gel/Polymer

LOGGING UNIT # 5

LOGGING GEOLOGISTS Jm Estes, John Middle

ABBREVIATIONS table with 4 columns: Symbol, Name, Description

CASING RECORD table with 2 columns: Size, Range

ABBREVIATIONS table with 4 columns: Symbol, Name, Description

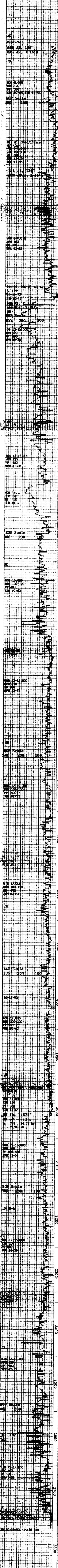
- Legend for Sand, Sandstone, Shale, Siltstone, Claystone, Clay, Diatomite, Conglomerate

- Legend for Limestone, Dolostone, Volcanics, Basalt

- Legend for Tuff, Fossil, MCA, Lignite

- Legend for Glaucconite, Pyrite

PERFORATION



ANALYSIS OF RETURNS

Main log table with columns: Depth, Lithology, Oil, Gas - Units, Chromatograph - PPM, and Remarks.

REMARKS

Detailed vertical text column containing geological observations, descriptions, and analytical notes.