

# DEPARTMENT OF LAND CONSERVATION AND DEVELOPMENT

RJC Presentation on Community Engagement to complete  
Racial Equity Impact Statements for Budgeting

# Agency Team

## **DLCD Presenters**

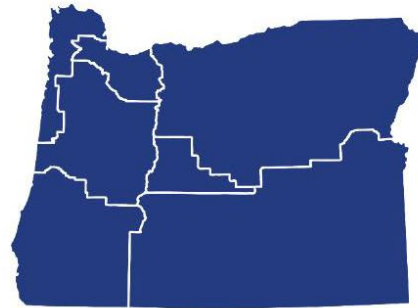
- Jim Rue – Director
- Sean Edging – Housing Policy Analyst
- Ethan Stuckmayer – Senior Planner of Housing Programs

# Background

Continuing implementation of Legislative changes to statewide housing & land use policy

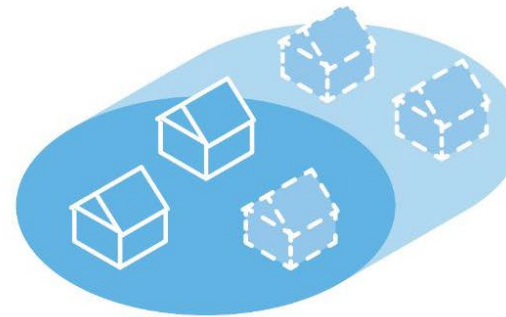
## House Bill 2003

Pilot a statewide housing analysis



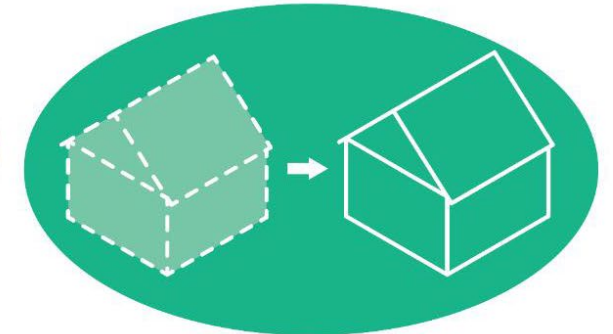
Regional Housing Needs Analysis (RHNA)

Plan to accommodate needed housing on a regular schedule



Housing Needs/Capacity Analysis (HNA)

Promote the development of needed housing

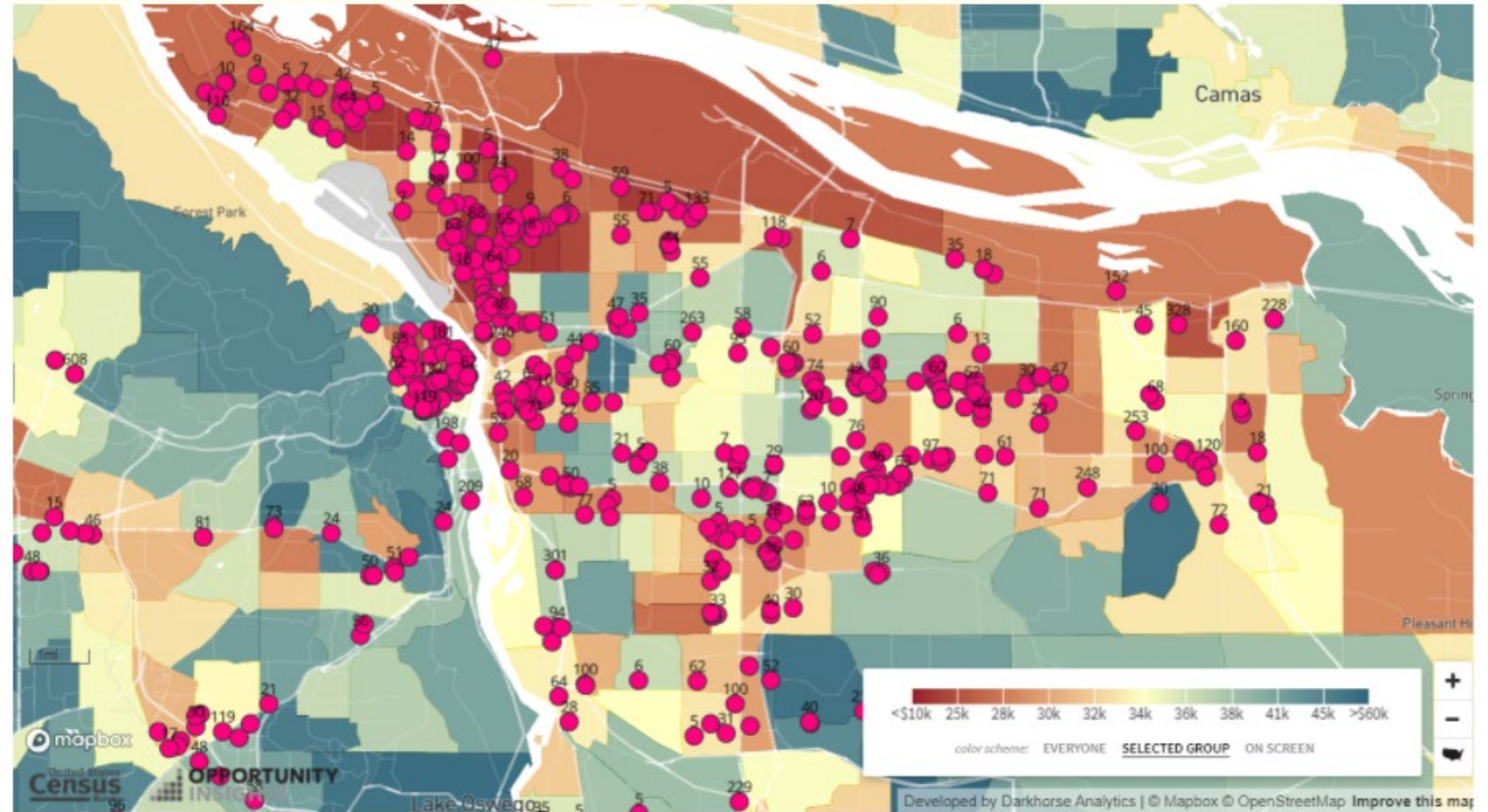


Housing Production Strategy (HPS)

# Background

## *Affordable Units Are Located Throughout the Portland Metro, but Tend to be in Lower-Opportunity Areas*

Map scale shows the upward mobility outcome in dollars for people who grew up in low-income families in each census tract, dots reflect developments listed in the Oregon Affordable Housing Inventory



## Programs Included

### Regional Housing Needs Analysis

- Direction from Legislature to study and make recommendations (HB 5006)
- Goal: Prepare legislative recommendations that achieve more affordable, fair, and equitable housing outcomes
- Affects Housing & Land Use implementation (Goal 10) and potentially other areas of state housing policy

# Engagement Principles

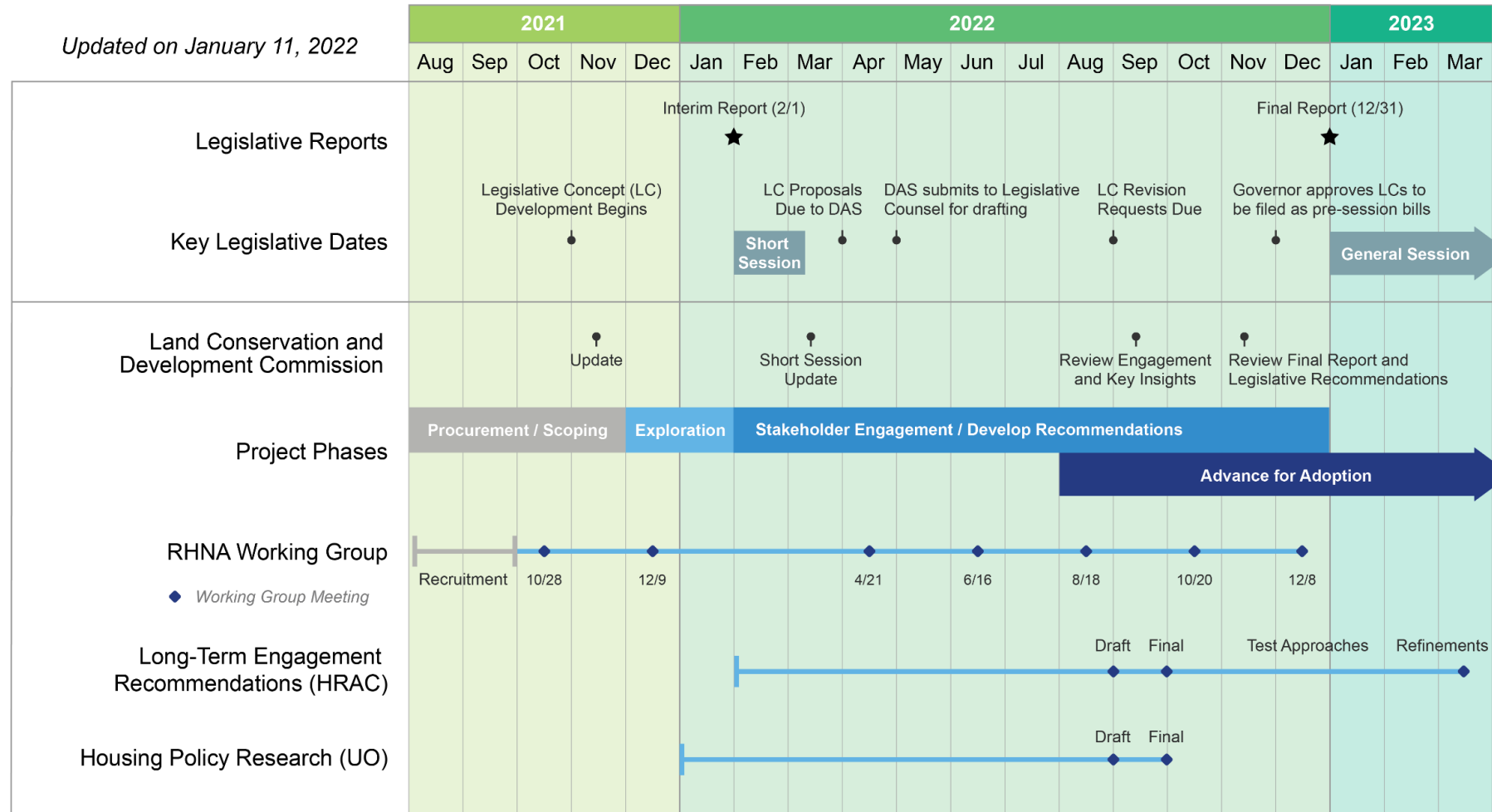
- Reach and consider broad range of perspectives
- Center racial equity and affordable, fair, and equitable housing outcomes
- Transparent communication
- Inclusive and audience-appropriate messaging
- Build on and improve engagement on housing implementation

## Data Being Used

- Initial process sought to address historic gaps in housing planning, including need for:
  - Communities of color
  - People experiencing homelessness
  - People with disabilities
  - Other underserved communities (e.g. English proficiency, age, etc.)
- Transition from data to policy conversations
- Imperfection in data landscape does not obviate need for action
- Closing data gaps in population forecasting
  - Race/ethnicity
  - Disability Status
  - Tribal-owned lands

# Phases and Timeline

Updated on January 11, 2022





# Context, Risk, Challenges, and Mitigation Strategies

Context & Risks/Challenges	Mitigation
Legislative timeline	Near- and long-term implementation
Contentious and long-standing issues	Stakeholder mapping and framing
Long-term planning in face of crisis	Messaging on implementation
Complex and technical policy issues	Communication & strategic messaging
Access to technology	Follow-up and one-on-one discussions

# Engagement Objectives

- **Involve** and **build capacity** in communities in the development of legislative recommendations for public policies and investments that can advance racial equity and achieve more affordable, fair, and equitable housing outcomes.

Negotiables	Non-Negotiables
Extent of issues to address	Commitment to systemic change
Degree of systemic change	Unimplementable proposal(s)
Legislative commitment (time/\$)	Climate action
Process for change	Proportionate resources and time

# Potential Community Partners

- Land use planning and housing staff at local/regional governments
- Equity-focused staff or committees in local/regional governments
- Equity and housing-related advocates and advocacy organizations
- Market-rate and subsidized affordable housing developers, lenders, and other real-estate actors
- Continuums of care and other community-based organizations
- The Governor's office and related committees
- Agency staff charged with a role in implementation

Who is not at the table

# Engagement Methods and Implementation Plan

## Near-term Policy Development

- Process Exploration and Framing (Dec '21 – Jan '22)
- Stakeholder Engagement (Jan '22 – Aug '22)
- Working Group

Methods: small group discussions, forums, and one-on-one interviews

## Long-term Programmatic Engagement

- Engagement recommendations to make housing planning more responsive

# Closing the Loop with Community

- Continued engagement will be critical for implementation
- Transition from policy development to legislative coordination and adoption
  - Building and communicating with coalitions
  - Presentations and external communications
  - Gearing up for legislative process