

USING CASAS DATA TO INFORM STANDARDS-BASED INSTRUCTION

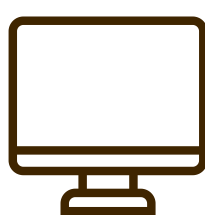
Oregon ABS Statewide PLC | PY23-24

Over the course of four virtual sessions, State ABS Team members Ashley Garrigan and Kelly Zinck will introduce you to the CASAS Teacher Portal, help you run one of CASAS' most popular reports for instructors, and show you how to interpret that report to identify promising areas for instruction.

You'll meet instructors from across the state, discuss student learning data, share your teaching practices, and set goals for integrating new skills into your day-to-day practice. There will be minimal work between PLC sessions; however, you will be expected to teach an updated lesson of your choice between Sessions 3 and 4 based on your findings.

This PLC is appropriate for ABE/GED and ESOL instructors who can attend all four sessions. Before the first session, State ABS Team members will work with you and your data professional to set up your account on the Teacher Portal.

SESSION 1 | JANUARY 26 | 11AM-1PM



Navigating the CASAS Teacher Portal

Learn how to use this web-based tool to generate CASAS reports by performance on state learning standards (CCRS and ELPS).

SESSION 2 | FEBRUARY 9 | 11AM-1PM



Analyzing Your Report

Examine how your students performed on state learning standards and make a plan for instruction based on your findings.

SESSION 3 | FEBRUARY 23 | 11AM-1PM



Implementing Your Findings

Brainstorm and create standards-based instructional activities that address students' learning needs. Then implement them in class.

SESSION 4 | MARCH 8 | 11AM-1PM



Integrating Data into Your Practice

Reflect on your experience, access additional resources, and generate goals to effect behavioral change in your teaching practices.

For questions, email ashley.garrigan@hecc.oregon.gov.

For registration, [register here via Zoom](#).