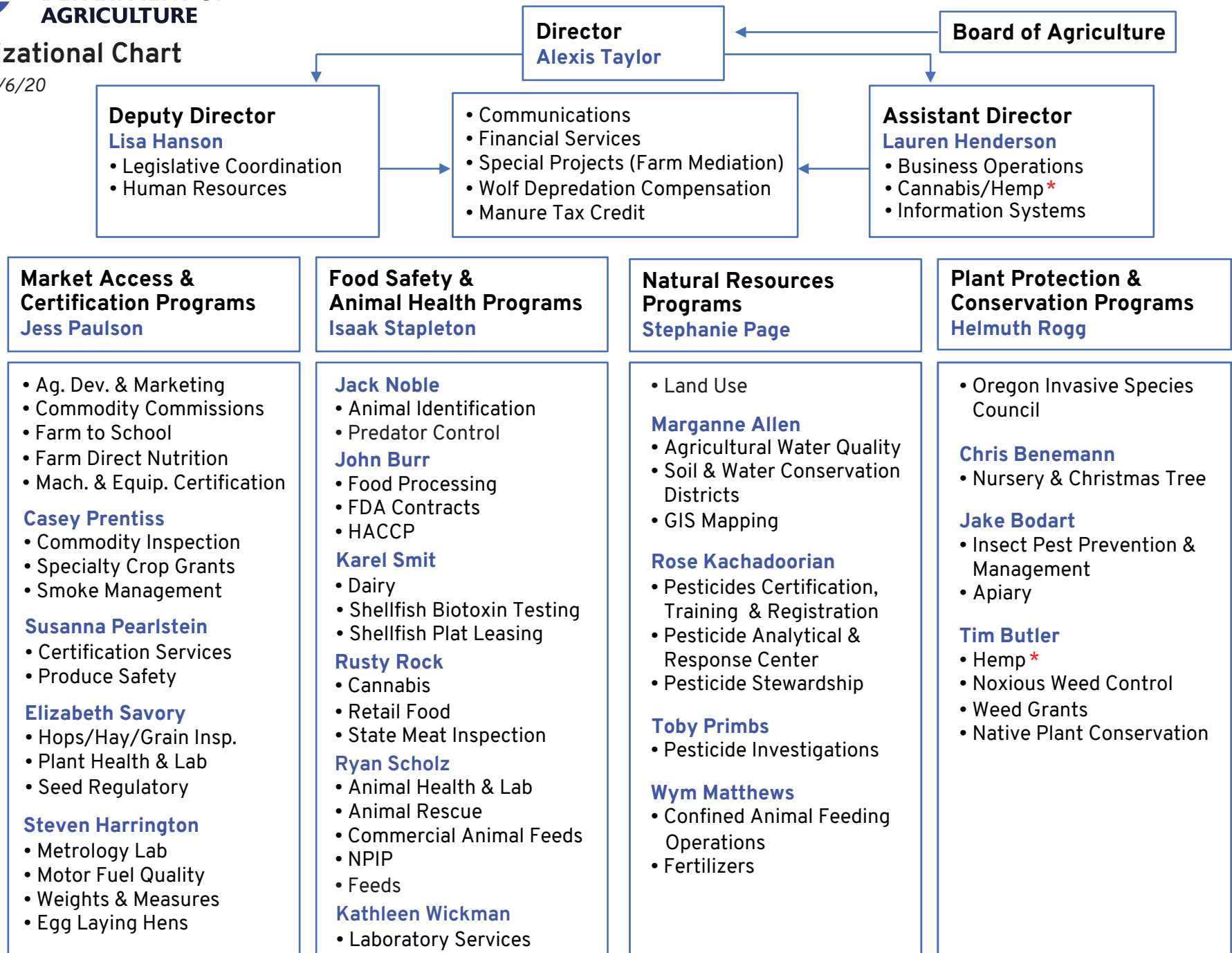




**Organizational Chart**

Created 11/6/20



**Director**  
**Alexis Taylor**

**Board of Agriculture**

**Deputy Director**  
**Lisa Hanson**  
• Legislative Coordination  
• Human Resources

• Communications  
• Financial Services  
• Special Projects (Farm Mediation)  
• Wolf Depredation Compensation  
• Manure Tax Credit

**Assistant Director**  
**Lauren Henderson**  
• Business Operations  
• Cannabis/Hemp\*  
• Information Systems

**Market Access & Certification Programs**  
**Jess Paulson**

• Ag. Dev. & Marketing  
• Commodity Commissions  
• Farm to School  
• Farm Direct Nutrition  
• Mach. & Equip. Certification  
**Casey Prentiss**  
• Commodity Inspection  
• Specialty Crop Grants  
• Smoke Management  
**Susanna Pearlstein**  
• Certification Services  
• Produce Safety  
**Elizabeth Savory**  
• Hops/Hay/Grain Insp.  
• Plant Health & Lab  
• Seed Regulatory  
**Steven Harrington**  
• Metrology Lab  
• Motor Fuel Quality  
• Weights & Measures  
• Egg Laying Hens

**Food Safety & Animal Health Programs**  
**Isaak Stapleton**

**Jack Noble**  
• Animal Identification  
• Predator Control  
**John Burr**  
• Food Processing  
• FDA Contracts  
• HACCP  
**Karel Smit**  
• Dairy  
• Shellfish Biotoxin Testing  
• Shellfish Plat Leasing  
**Rusty Rock**  
• Cannabis  
• Retail Food  
• State Meat Inspection  
**Ryan Scholz**  
• Animal Health & Lab  
• Animal Rescue  
• Commercial Animal Feeds  
• NPIP  
• Feeds  
**Kathleen Wickman**  
• Laboratory Services

**Natural Resources Programs**  
**Stephanie Page**

• Land Use  
**Marganne Allen**  
• Agricultural Water Quality  
• Soil & Water Conservation Districts  
• GIS Mapping  
**Rose Kachadoorian**  
• Pesticides Certification, Training & Registration  
• Pesticide Analytical & Response Center  
• Pesticide Stewardship  
**Toby Primbs**  
• Pesticide Investigations  
**Wym Matthews**  
• Confined Animal Feeding Operations  
• Fertilizers

**Plant Protection & Conservation Programs**  
**Helmuth Rogg**

• Oregon Invasive Species Council  
**Chris Benemann**  
• Nursery & Christmas Tree  
**Jake Bodart**  
• Insect Pest Prevention & Management  
• Apiary  
**Tim Butler**  
• Hemp\*  
• Noxious Weed Control  
• Weed Grants  
• Native Plant Conservation