

Timber Products Output (TPO) in Support of HWP Carbon Accounting

Todd A. Morgan, CF



October 18, 2018

**Forest Carbon Accounting Stakeholder Meeting
Salem, OR**



Bureau of Business & Economic Research

Forest Industry Research

- **State harvest & industry analyses**
- **Logging utilization studies**
- **Regional timber harvest reporting**
- **Quarterly Montana information**
- **Other forest economics projects**



Harvest & Industry Analysis

- **Rocky Mountains & Pacific Coast**
- **Describe industry structure, capacity, condition, and changes**
- **Track wood fiber from forest through primary processing**
- **Associate key economic indicators**

Removals from Forest Inventory

Logging utilization studies

TPO mill surveys



FIA P-2 plots

TPO (timber product output):

FIA-TPO data characterize removals & use:

- timber harvested for wood products
- associated harvest/logging residue
- mill residue

National data

- county level
- facility list/map
- periodic → annual

Timber Product Output (TPO) Reports

TPO DOCUMENTATION AND INFORMATION ABOUT THE TPO/RPA DATA:

DESCRIPTION	LINK
State Level Core Tables	State Level Core Tables
Recent RPA/TPO publications	Recent TPO/RPA PUBLICATIONS
TPO Documentation	TPO Documentation
TPO DATA DICTIONARY and USERS GUIDE:	TPO Data Dictionary and Users Guide
The RPA and TPO Data Years per Product tables in RPA publications	
RPA 1997	see Appendix Table A-3 Dates of source data for RPA inventory and removals statistics
RPA 2002	see Appendix Table A-3 Dates of source data for RPA inventory and removals statistics
RPA 2007	see Appendix Table A-1 Dates of inventory data by subregion and State
RPA 2012	see Appendix Table A-1 Dates of inventory data by subregion and State
TPO Summary Sheet volume of removals by removals class per State/Report Year	TPO PER STATE SUMMARY SHEET
TPO Summary Sheet volume of removals by removals class per SRS region/Report Year	TPO_SRS_SUMMARY_SHEET
RPA Summary Sheet volume of removals by removals class per region and subregion RPA	RPA_SUMMARY_SHEET2
TPO/RPA Posting Dates	TPO/RPA POSTING DATES

WEBSITE CITATION:

comments	citation
If you are using the most current RPA data then you would use 2012 for the year.	U.S. Department of Agriculture, Forest Service. 2012. Timber Product Output (TPO) Reports. Knoxville, TN: U.S. Department of Agriculture Forest Service, Southern Research Station. http://srsfia2.fs.fed.us/php/tpo_2009/tpo_rpa_int1.php . [Date accessed: Month da, year].
If you are using the SRS database that is changing such as the TPO database you can use [N.d.] for the data	U.S. Department of Agriculture, Forest Service [N.d.]. Timber Product Output (TPO) Reports. Knoxville, TN: U.S. Department of Agriculture Forest Service, Southern Research Station. http://srsfia2.fs.fed.us/php/tpo_2009/tpo_rpa_int1.php . [Date accessed: Month da, year].

TPO CONTACT INFORMATION

If you have questions about the TPO data please contact the following people:

AREA	CONTACT
Southern Research Station Data	James Bentley
Northern Research Station Data	Ron Piva
Rocky Mountain Research Station Data	Todd Moran
Pacific Coast Data	Todd Moran
report program bugs/problems to:	Helen Beresford

Two similar RPA / TPO applications are offered here.
Tables may be generated for:
the United States, FIA Regions (Northeast, North Central, Southern, Rocky Mountains or Pacific Coast), State(s), and/or Counties.

National RPA reports The National RPA application generates tables based on RPA report years only.

National TPO reports The National TPO application generates tables based on regional report years.

https://www.fs.usda.gov/srsfia/php/tpo_2009/tpo_rpa_int1.php

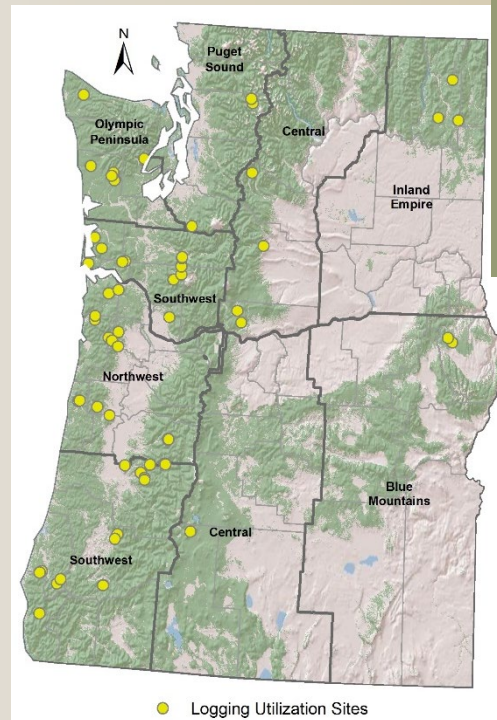
Oregon TPO-related Activities

Mill Surveys

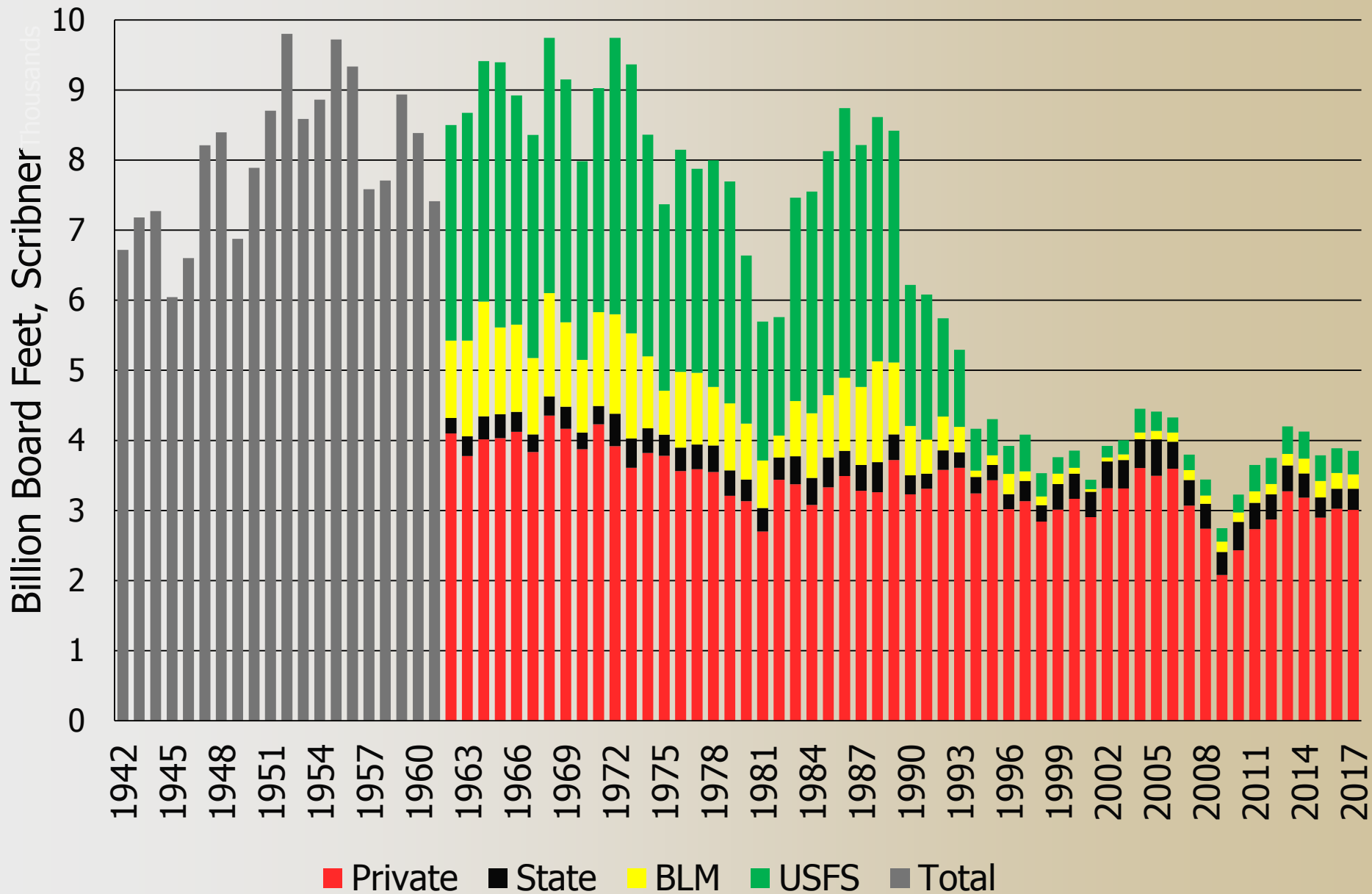
- 2003, 2008, 2013 - published
- **2017 – data collection began Spring 2018**
- **Working with ODF**
- >180 facilities
- ~ 4 BBF Scribner of timber annually
- >\$7 Billion in sales
- >5 BBF of lumber

Logging Residue

- 2011-2015 report published
- Supported by NARA
- 64 OR & WA logging sites
- >1,500 felled trees measured
- Similar utilization results



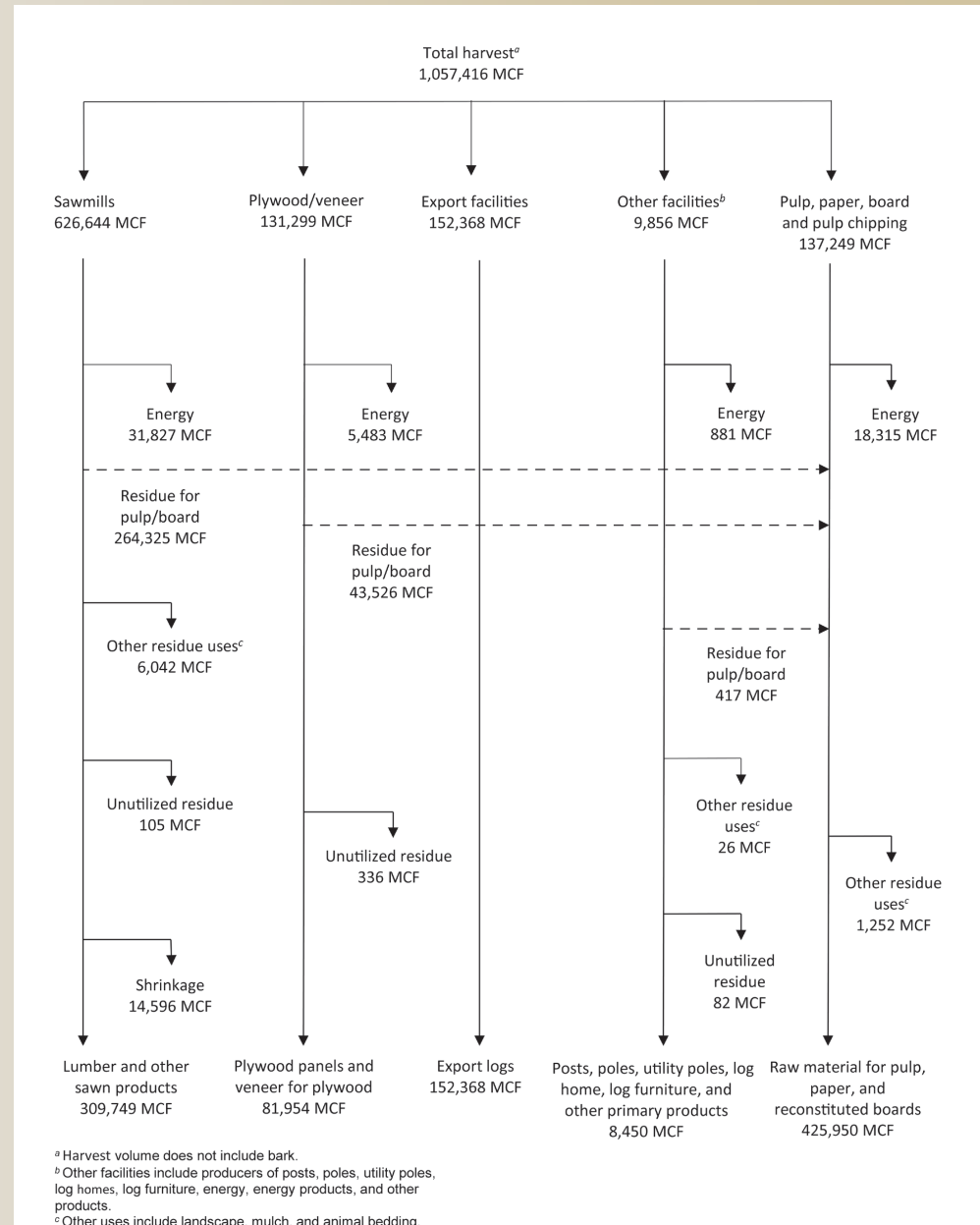
Oregon Timber Harvest



Oregon Timber Harvest and Use

1,057 MMCF of wood fiber

- **60% to sawmills**
- **14% to log exports**
- **13% to pulp mills**
- **12% to veneer mills**
- **82% of mill residue used for pulp & particleboard**
- **15% of mill residue used for energy**
- **0.5 MMCF (0.1%) not used**



Up next:

**Nate Anderson with USFS
Rocky Mountain Research Station**