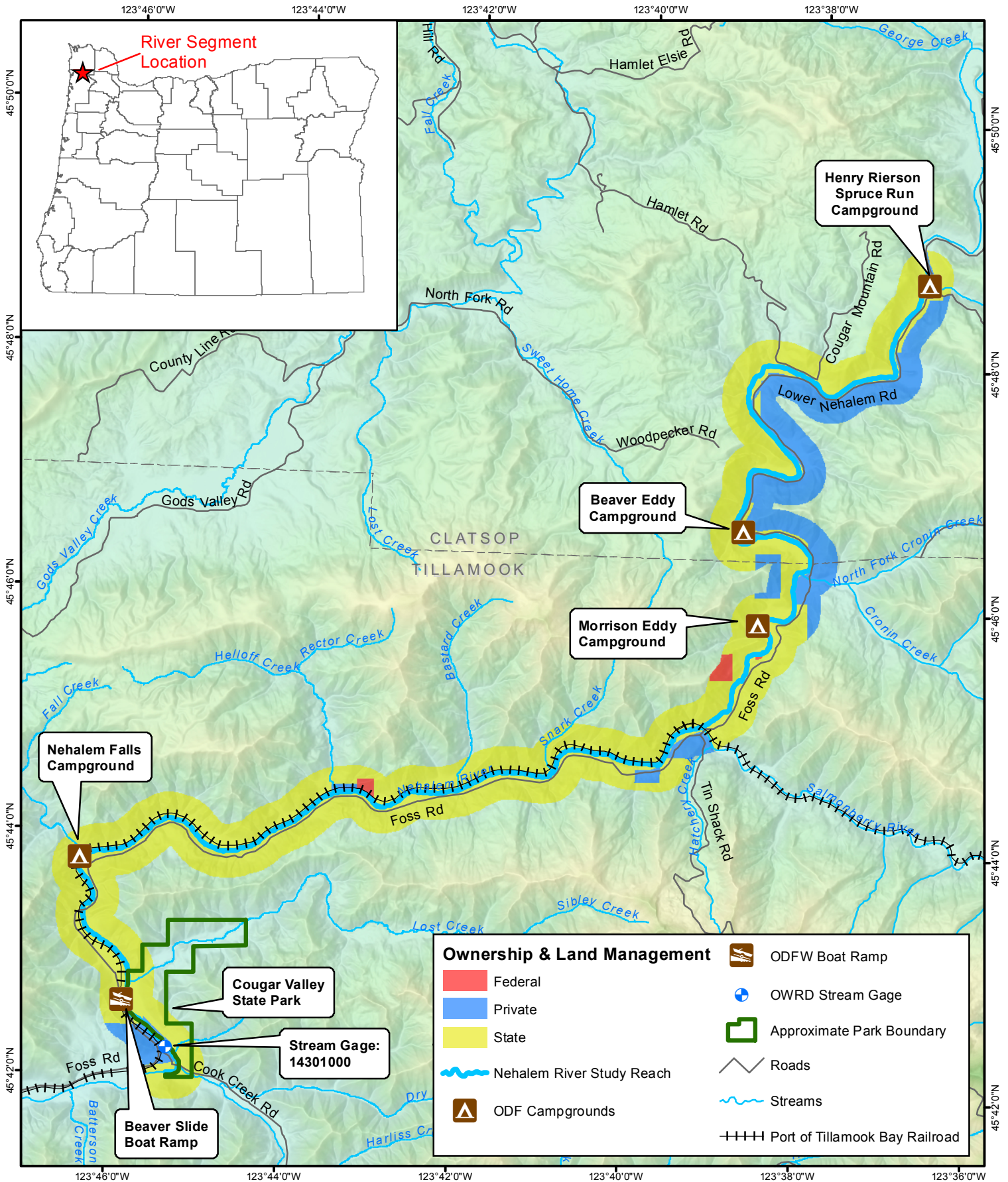
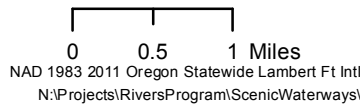


Nehalem Scenic Waterway Study Segment

Oregon Parks and Recreation Dept.
725 Summer St. NE, Suite C
Salem OR, 97301



This product is for informational purposes and may not have been prepared for, or be suitable for legal, engineering, or surveying purposes. Users of this information should review or consult the primary data and information sources to ascertain the usability of the information.



AGENDA ITEM E

Attachment 1

Page 1 of 1

NMOB-03299 9/18/2017

E9/18/2017

P.never