

WELCOME TO HAMPTON LUMBER'S BIG CREEK FOREST



SCAN QR CODE TO LEARN MORE ABOUT
HAMPTON AND TODAY'S VISIT!

<https://tinyurl.com/ye2mzjvs>



ABOUT US

Hampton Lumber is a fourth-generation, family-owned company headquartered in Portland, OR. Founded in Willamina, Oregon in 1942, Hampton celebrated its 80th year in business this year. Hampton operates ten sawmills in Oregon, Washington, and British Columbia and markets wood products all over the world. All of Hampton's forestlands are certified by the Sustainable Forestry Initiative (SFI), an independent, non-profit organization that promotes sustainable forest management. SFI certified forests play an important role in water conservation, wildlife habitat, and climate solutions.

QUESTIONS?

LAURA WILKESON, STATE FOREST POLICY DIRECTOR

LAURAWILKESON@HAMPTONLUMBER.COM

KRISTIN RASMUSSEN, DIRECTOR OF PUBLIC AFFAIRS & COMMUNICATIONS

KRISTINRASMUSSEN@HAMPTONLUMBER.COM





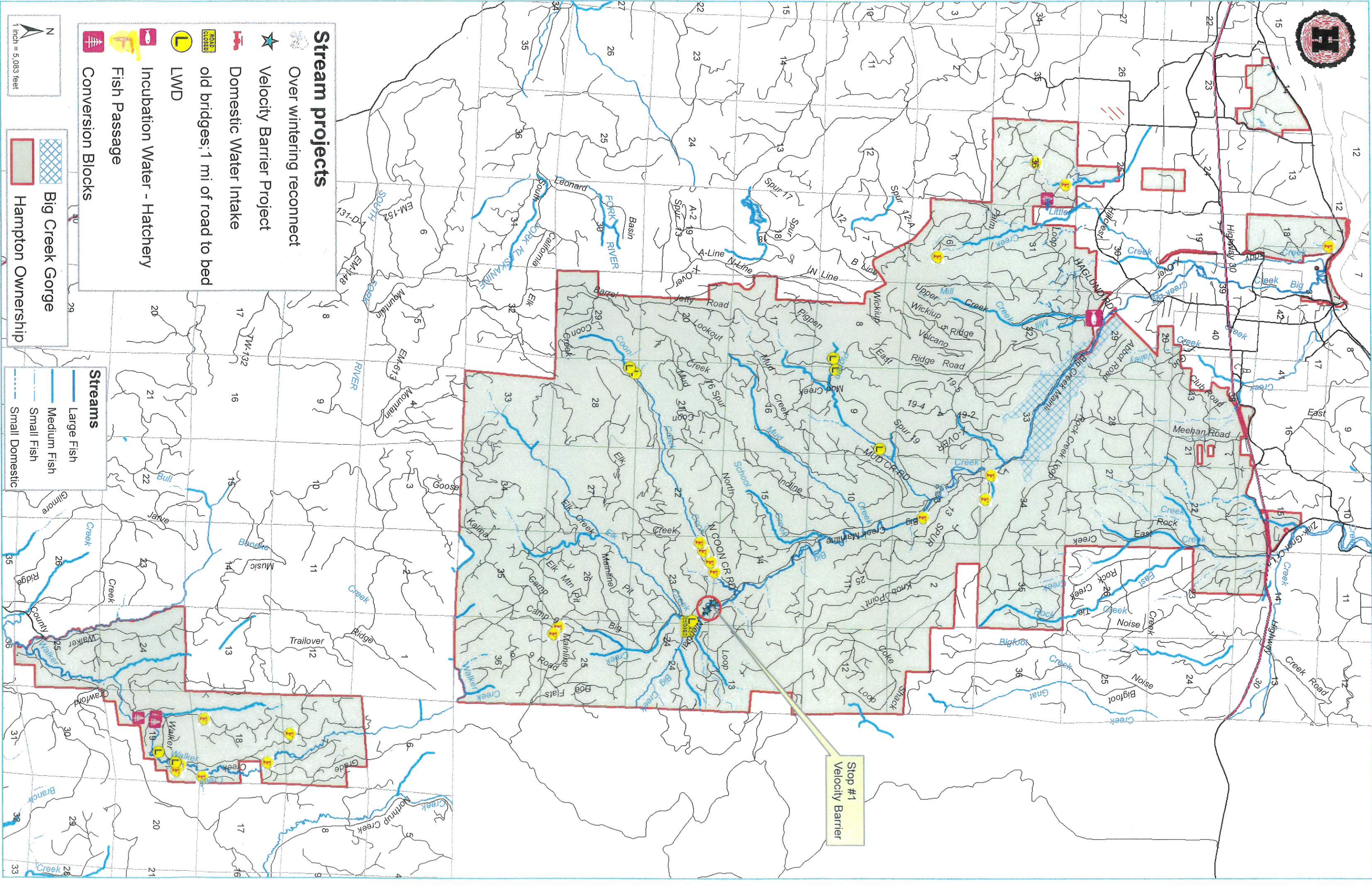
1 inch = 5,083 feet

Big Creek Gorge
Hampton Ownership

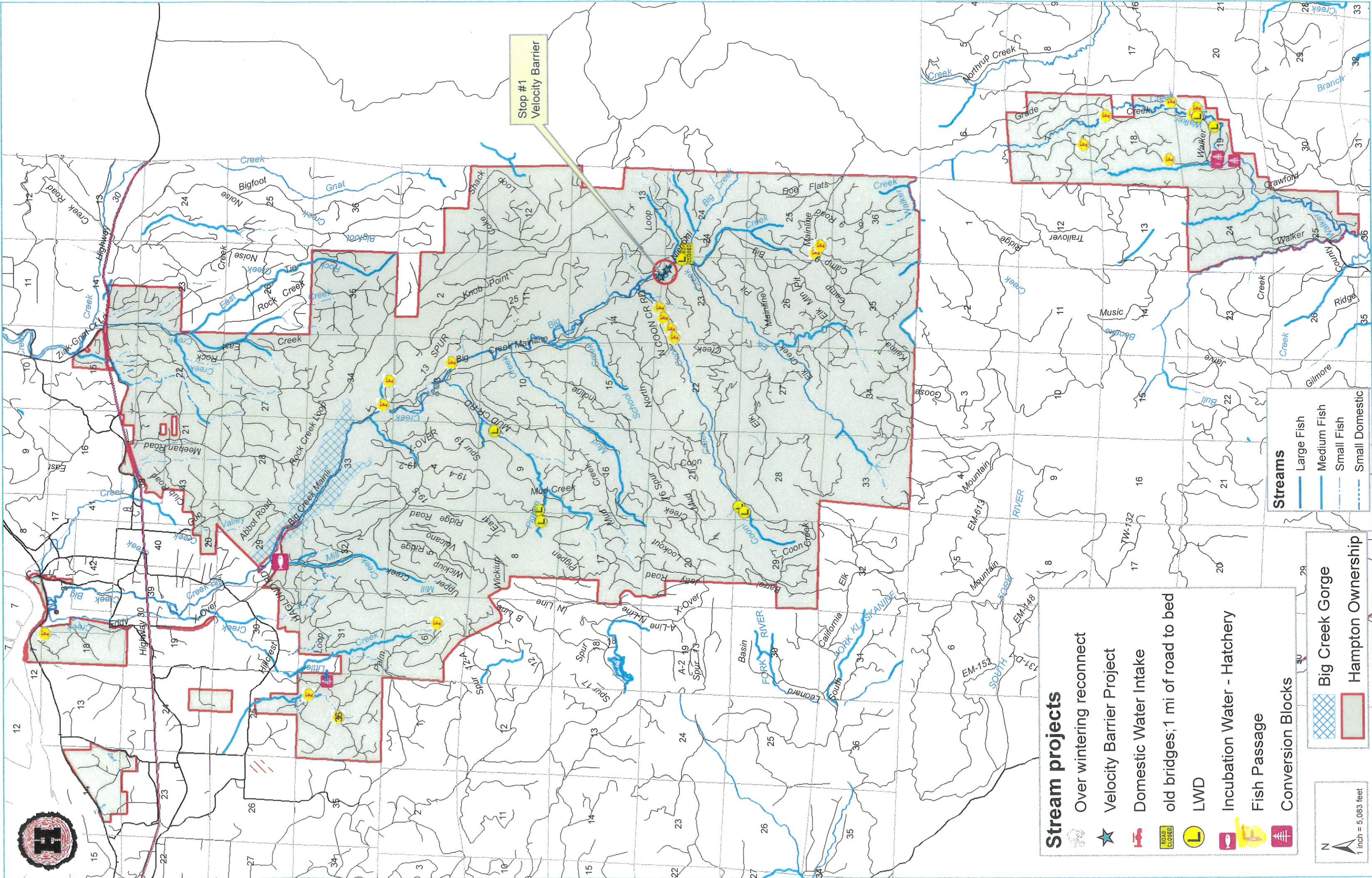
Streams
Large Fish
Medium Fish
Small Fish
Small Domestic

Stream projects

- Over wintering reconnect
- Velocity Barrier Project
- Domestic Water Intake
- old bridges; 1 mi of road to bed
- LWD
- Incubation Water - Hatchery
- Fish Passage
- Conversion Blocks



Stop #1
Velocity Barrier



Stop #1
Velocity Barrier

Stream projects

- Over wintering reconnect
- Velocity Barrier Project
- Domestic Water Intake
- old bridges; 1 mi of road to bed
- LWD
- Incubation Water - Hatchery
- Fish Passage
- Conversion Blocks



- ### Streams
- Large Fish
 - Medium Fish
 - Small Fish
 - Small Domestic

- Big Creek Gorge
- Hampton Ownership