

# Western Oregon State Forests Forest Management Plan and Habitat Conservation Plan Update

February 7, 2023 | Virtual Meeting Open to the Public



KEARNS WEST

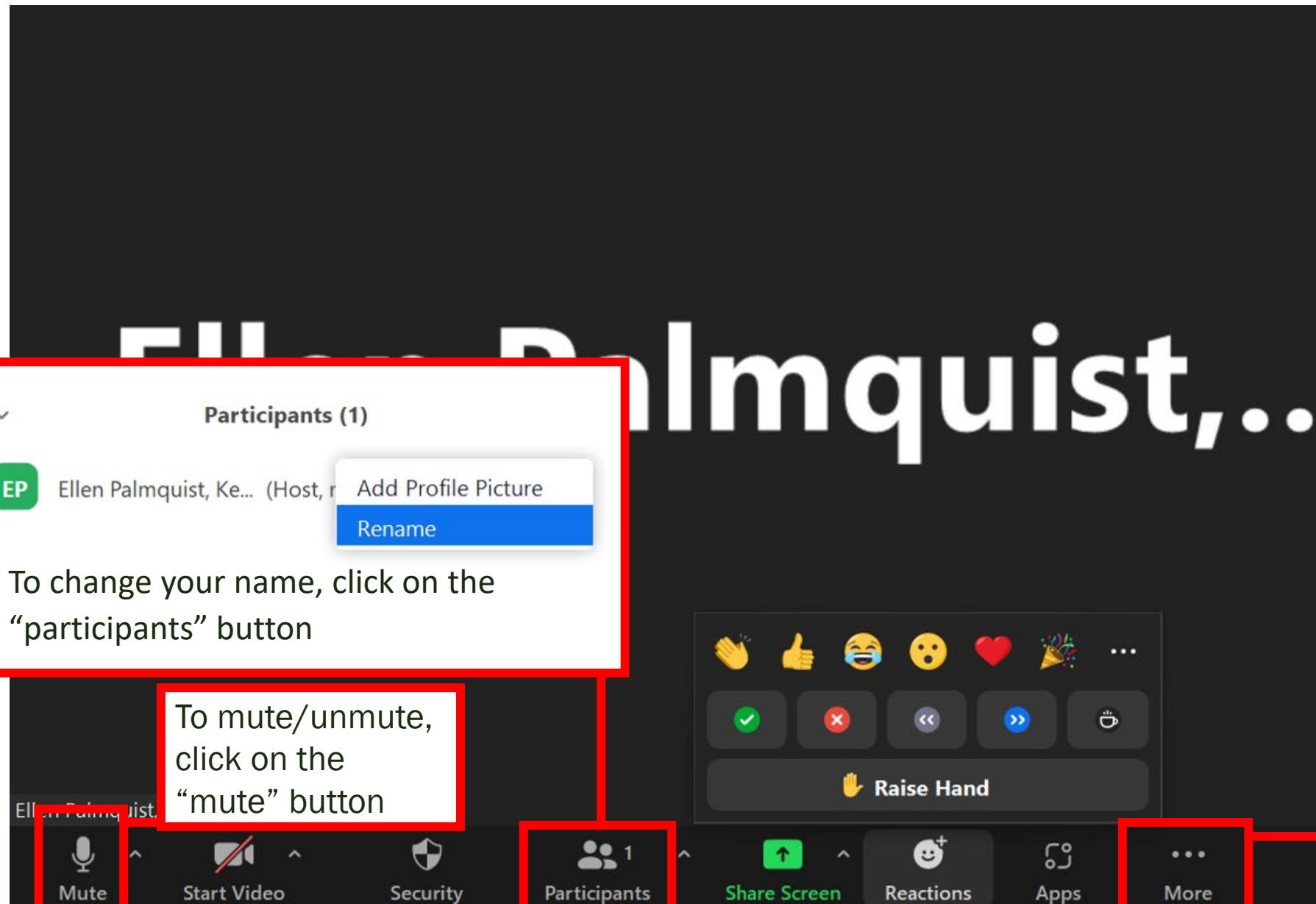


# REMOTE PARTICIPATION TIPS

- Keep yourself on mute when not speaking (\*6 on your phone)
- If you have a question or comment, use the “Raise Your Hand” button to get in the queue to speak, or press \*9 on your phone
- Use of video encouraged
- Say your name and affiliation before speaking
- Use the “Chat” feature for help troubleshooting any issues
- The meeting will include time for Q&A
- You can also email comments to: [tim.l.hoffman@odf.Oregon.gov](mailto:tim.l.hoffman@odf.Oregon.gov)



# ZOOM FEATURES



Participants (1)

EP Ellen Palmquist, Ke... (Host, r Add Profile Picture  
Rename

To change your name, click on the “participants” button

To mute/unmute, click on the “mute” button

Mute

Participants 1

More

To: Everyone ▾

Type message here...

Click on the “chat” button and use the dropdown to message Angela Hassenius for troubleshooting

# DISCUSSION GUIDELINES

- Honor the agenda
- Provide a balance of speaking time
- Listen to understand and ask questions to clarify
- Respect each other's viewpoints, values and interests
- Focus comments on topics at hand



# AGENDA

- Welcome, Introductions, and Agenda Overview
- Forest Management: Overview and Status Update
  - Q&A and Discussion
- Forest Management Plan: Components
  - Q&A and Discussion
- Western Oregon HCP and NEPA Process Update
  - Q&A and Discussion
- Summary and Next Steps
- Discussion on Topics of Interest (3-4pm, optional)



# OPENING REMARKS

**Mike Wilson**

*ODF State Forests Division Chief*



# PROJECT INFORMATION

## HCP Contact

Cindy Kolomechuk

[cindy.kolomechuk@odf.oregon.gov](mailto:cindy.kolomechuk@odf.oregon.gov)

503-502-5599

## FMP Contact

Jennifer McAdoo

[Jennifer.mcadoo@icf.com](mailto:Jennifer.mcadoo@icf.com)

503-889-9115



# PARTICIPANT AFFILIATIONS POLL





# Forest Management Plan

Overview and Status Update



# CONTEXT AND SCOPE

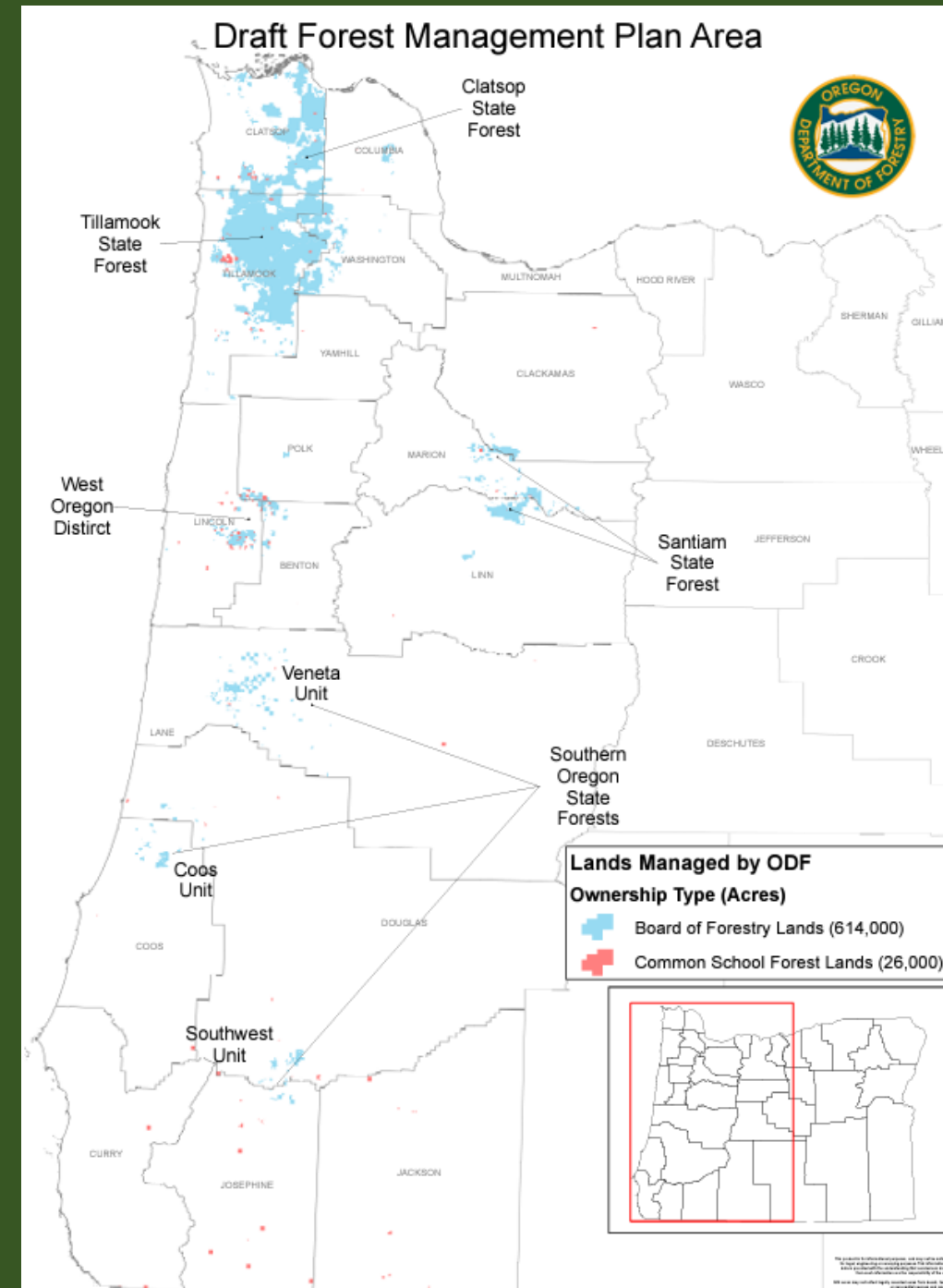
## Geographic Context

State Forest lands managed by ODF's State Forests Division in western Oregon

- 614,000 acres Board of Forestry Lands
- 26,000 acres Common School Forest Lands

## Management Context

- Oregon Revised Statutes
- Greatest Permanent Value Rule
- State Forests Planning Rule



**FMP DIRECTION**  
Board of Forestry

**FMP**

- Guiding principles
- Management approach
- Goals and strategies
- Guidelines for asset management, implementation, and adaptive management

**Board of Forestry Review of FMP Performance**

- Performance measures
- Measurable outcomes

**Habitat Conservation Plan**

**Adaptive Management Plan**

**Policy Standards**

**Forest Land Management Classification System**

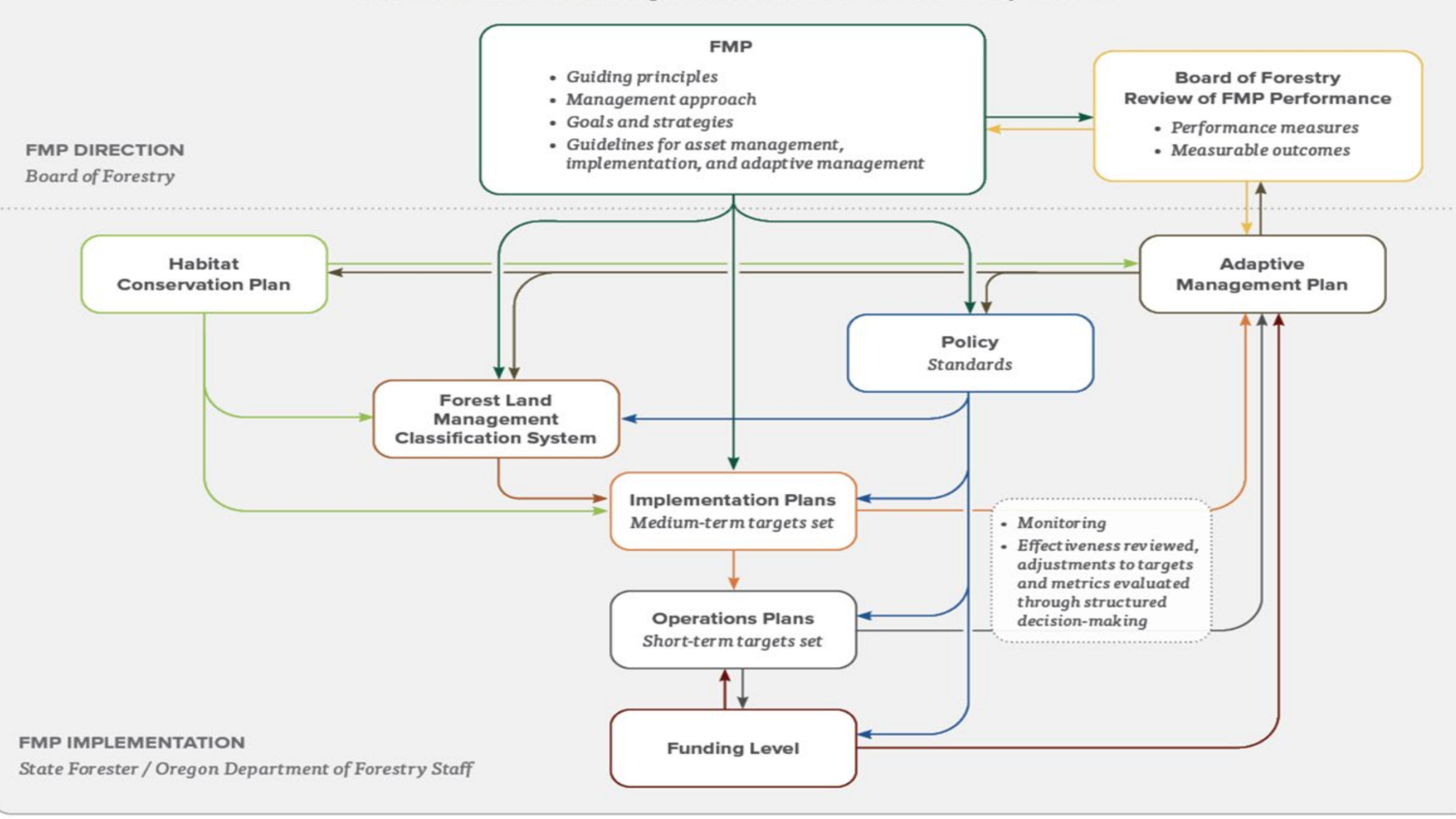
**Implementation Plans**  
Medium-term targets set

**Operations Plans**  
Short-term targets set

**Funding Level**

• Monitoring  
• Effectiveness reviewed, adjustments to targets and metrics evaluated through structured decision-making

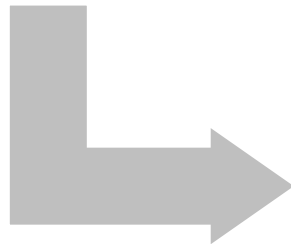
**FMP IMPLEMENTATION**  
State Forester / Oregon Department of Forestry Staff



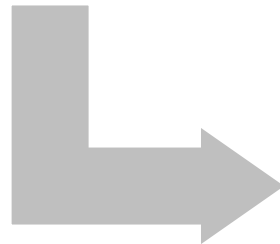
# PLANNING LEVELS



- The Forest Management Plan provides overall **high-level** forest management goals & strategies
- The Habitat Conservation Plan provides majority of conservation strategies



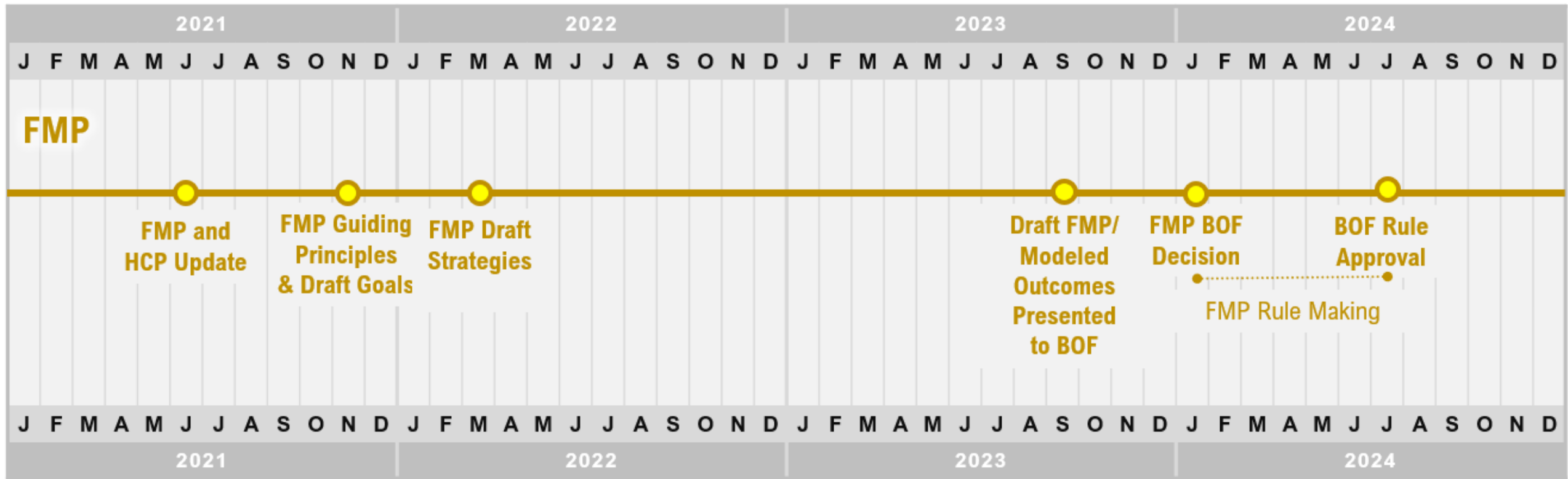
- Implementation Plans are sub geographic plans with **mid-level** objectives, goals & plans



- Operations Plans include **operational & project level** detail

# Working FMP Timeline

● BOF Presentation / Decision



# FMP ENGAGEMENT



Tribal Coordination – 6 Tribal Workgroup meetings, Aug 2021-April 2022; Continued Engagement



FMP Meetings Open to the Public – 4 Meetings, 50-70 attendees per meeting, May – Dec 2021



FMP Joint Stakeholder Meetings – 3 Meetings, 20-40 attendees per meeting, Aug – Dec 2021



FMP Strategies Public Feedback – 3,322 survey comments, 318 emails



Board of Forestry Engagement – Draft Management Approach, Draft Goals and Strategies



Forest Trust Lands Advisory Committee Engagement – Ongoing meetings



State Partner Engagement – Ongoing meetings with state agencies

# FMP GOALS AND STRATEGIES

## Goal Development

- August 2021 – Public/Stakeholder/Partner Meetings
- November 2021 - Board of Forestry Meeting

## Strategy Development

- December 2021 – Public/Stakeholder/Partner Meetings
- March 2022 - Board of Forestry Meeting

## Subsequent Updates

- Strategy consolidation
- Clarification of intent
- Connect to themes and management approach
- Additional internal review (currently)
- Public review, Summer 2023



# BOARD OF FORESTRY ENGAGEMENT

## Input from Board of Forestry members to date

- Guiding Principles - *approved*
- Draft Management Approach
- Draft Goals and Strategies
- Draft Guidelines

## Opportunities for future direction

- Review of complete draft FMP summer 2023
- Board meeting in September 2023

## Performance Measures Development

- Board meeting in September 2023





# Q&A and Discussion



# Forest Management Plan

## Components



# FMP COMPONENTS

INTRODUCTION

MANAGEMENT APPROACH

FOREST RESOURCES, GOALS, AND STRATEGIES

GUIDELINES



# FMP MANAGEMENT APPROACH

- Vision for how the forest is managed
- How GPV is achieved
- Addresses Key Themes:
  - Sustainability
  - Climate Change
  - Diversity, Equity, Inclusion
  - Adaptive Management
- Landscape context



# GREATEST PERMANENT VALUE (GPV)

- ORS 530.050, ORS 629-035
- GPV means “healthy, productive, and sustainable forest ecosystems that over time and across the landscape provide a full range of social, economic, and environmental benefits to the people of Oregon”.



# GPV AND ECOSYSTEM SERVICES

Provisioning services: food, fuel, timber, special forest products, mineral sources, clean air and water

Regulating services – water, climate, carbon, disease

Supporting services – nutrient cycling , soil formation, primary productivity, biodiversity

Cultural services – recreational, aesthetic, spiritual, and scientific benefits and values



# ECOSYSTEMS

## Ecosystem Services

### Provisioning Services

Timber products, special forest products, food, energy and mineral sources, clean air and water

### Regulating Services

Water quality, water yield, flood mitigation, climate change mitigation, and carbon storage

### Cultural Services

Recreational, educational, aesthetic, spiritual, and scientific benefits

### Supporting Services

Nutrient cycling, soil formation, pollination, seed dispersal, and regional biodiversity

## Services to Ecosystems

### Protecting Services

Fish and wildlife habitat protection, integrated pest management, riparian and water protection, soil protection, ecologically sustainable harvest

### Enhancing Services

Thinning, seedling selection, nutrient cycling

### Restoring Services

Wildlife habitat improvement projects, stream enhancement, promoting carbon storage

### Supporting Services

Cultural and natural resources stewardship practices, culturally significant species ethnobotanical strategy, native seed sources

Reciprocity

# HUMANS

## Ecologically Sustainable Forest Management

*Promotes healthy, resilient, productive, sustainable forest ecosystems through:*

### Conservation Emphasis Areas Distributed Considering a Landscape Context

- Riparian conservation areas
- Habitat conservation areas
- Protected wetlands
- Protected steep slopes
- Strategies for species of concern

### Management of Landscape Conditions

- Composition and structural diversity
- Location of harvest units and roads
- Habitat connectivity

### Management of Stands

- Young stand management
- Thinning
- Regeneration harvests
- Retention of legacy structures in all harvests
- Integrated pest management

*To provide:*

### Social, Economic, and Environmental Ecosystem Services

- Recreation, education, and interpretation opportunities
- Sustainable and predictable production of forest products that generate revenue and support the economy
- Properly functioning aquatic habitats for native fish and aquatic life, habitats for native wildlife, productive soil, clean air and water, and protection against floods and erosion



# EMPHASIS AREAS AND FLMCS

- Forest Land Management Classification System (FLMCS)
  - Resilience and Adaptive Capacity
  - General Stewardship
  - High Value Conservation Areas
  - Focused Stewardship
  - Special Use Areas
- Recreation, Education, and Interpretation
- The whole forest is a working forest, working to provide all elements of GPV.



# FMP GUIDELINES: OVERVIEW

Guidelines generally describe how assets will be maintained or enhanced and how spending will be prioritized to achieve the resource management goals and strategies

Additionally, the guidelines describe:

- Plan Implementation
- Adaptive Management
- Plan Revision Process and Public Engagement



# FMP GUIDELINES: ASSET MANAGEMENT

Assets are confined to:

- Parcels of land
- Forest products
- Forest roads and related improvements
- Trails
- Campground facilities



# FMP GUIDELINES: ASSET MANAGEMENT

	<b>Increasing 3-year Revenue Forecast</b>	<b>Decreasing 3-year Revenue Forecast</b>
<b>*FDF Contains Greater than 12 Months of Operating Expenses</b>	Level 1: Expand existing investments and fund new strategic investments	Level 2: Maintain or expand existing investments and explore additional strategic investments
<b>FDF Contains 6 to 12 Months of Operating Expenses</b>	Level 2: Maintain or expand existing investments and explore additional strategic investments	Level 3: Invest in deferred maintenance and consider small set of new strategic investments
<b>FDF Contains Less than 6 Months of Operating Expenses</b>	Level 3: Invest in deferred maintenance and consider small set of new strategic investments	Level 4: Maintenance to achieve core business and meet legal obligations; no new investments

*\*FDF: Forest Development Fund*

# FMP GUIDELINES: IMPLEMENTATION

FMP implementation is supported by the following elements:

- Habitat Conservation Plan (HCP)
- Performance measures
- Operational Policies
- Modeling
- Forest Land Management Classification System (FLMCS).
- Implementation plans (IPs)
- Operations plans (OPs).
- Adaptive Management Plan (AMP).
- Monitoring Plans

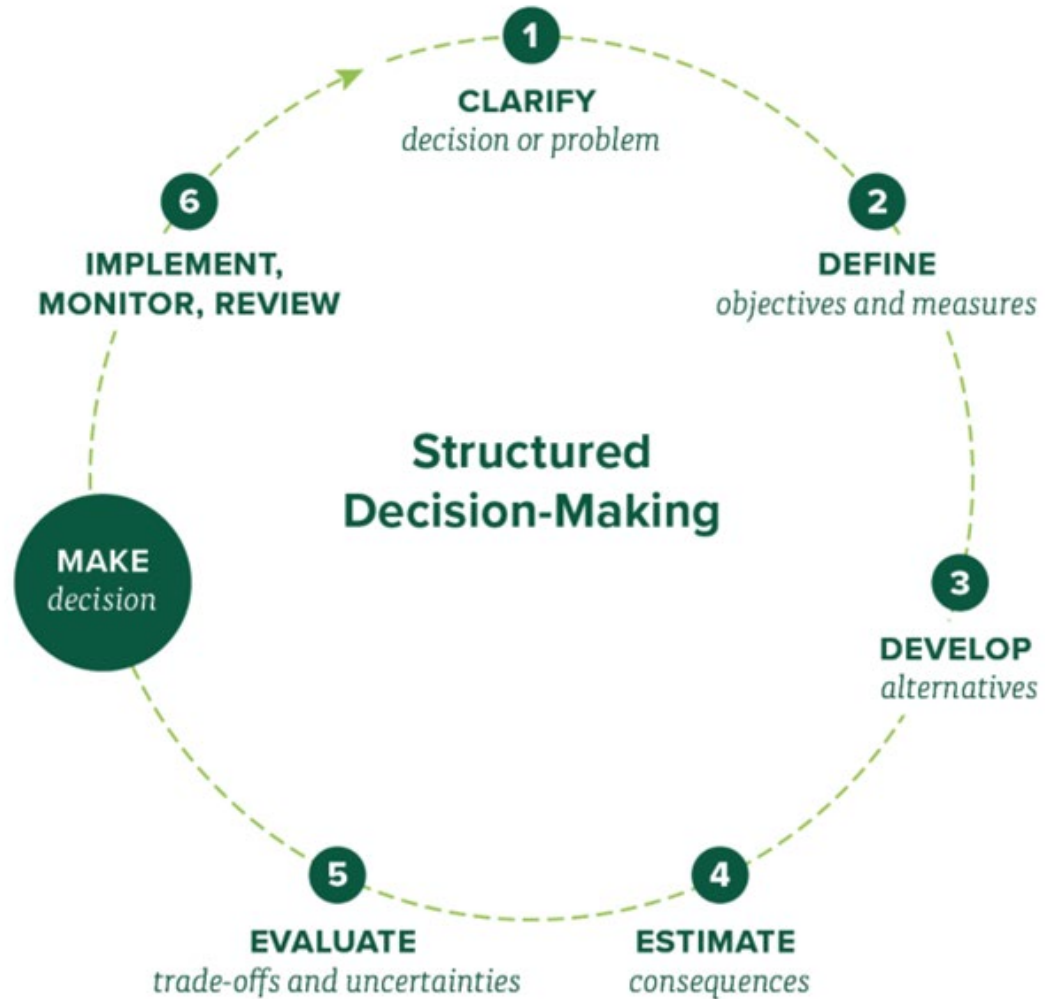


# FMP GUIDELINES: ADAPTIVE MANAGEMENT

The process of implementing plans in a scientifically based, systematically structured approach that tests and monitors assumptions and predictions in management plans and uses the resulting information to improve the plans or management practices used to implement them (OAR 629-035-0000(2)).



# FMP GUIDELINES: ADAPTIVE MANAGEMENT



# FMP GUIDELINES: ADAPTIVE MANAGEMENT

The Adaptive Management Plan (AMP) is the workflow for:

- Facilitating decision analysis and adaptive management
- Designing monitoring projects
- Reporting monitoring results and decision-making products
- Identifying and integrating information and decision needs within State Forests





# FMP GUIDELINES: PUBLIC ENGAGEMENT

PLAN LEVEL	PUBLIC ENGAGEMENT AREAS
Adaptive Management Plan	Provide comment on performance measures at Board of Forestry Public Meetings
Implementation Plan	Levels and types of planned management activities
	Priorities and general location of planned management activities
Operations Plans	Suggestions to improve efficiency and effectiveness
	Clarify how planned operations are described
	Offer solution-oriented comments to further achieve Greatest Permanent Value

# Q&A and Discussion

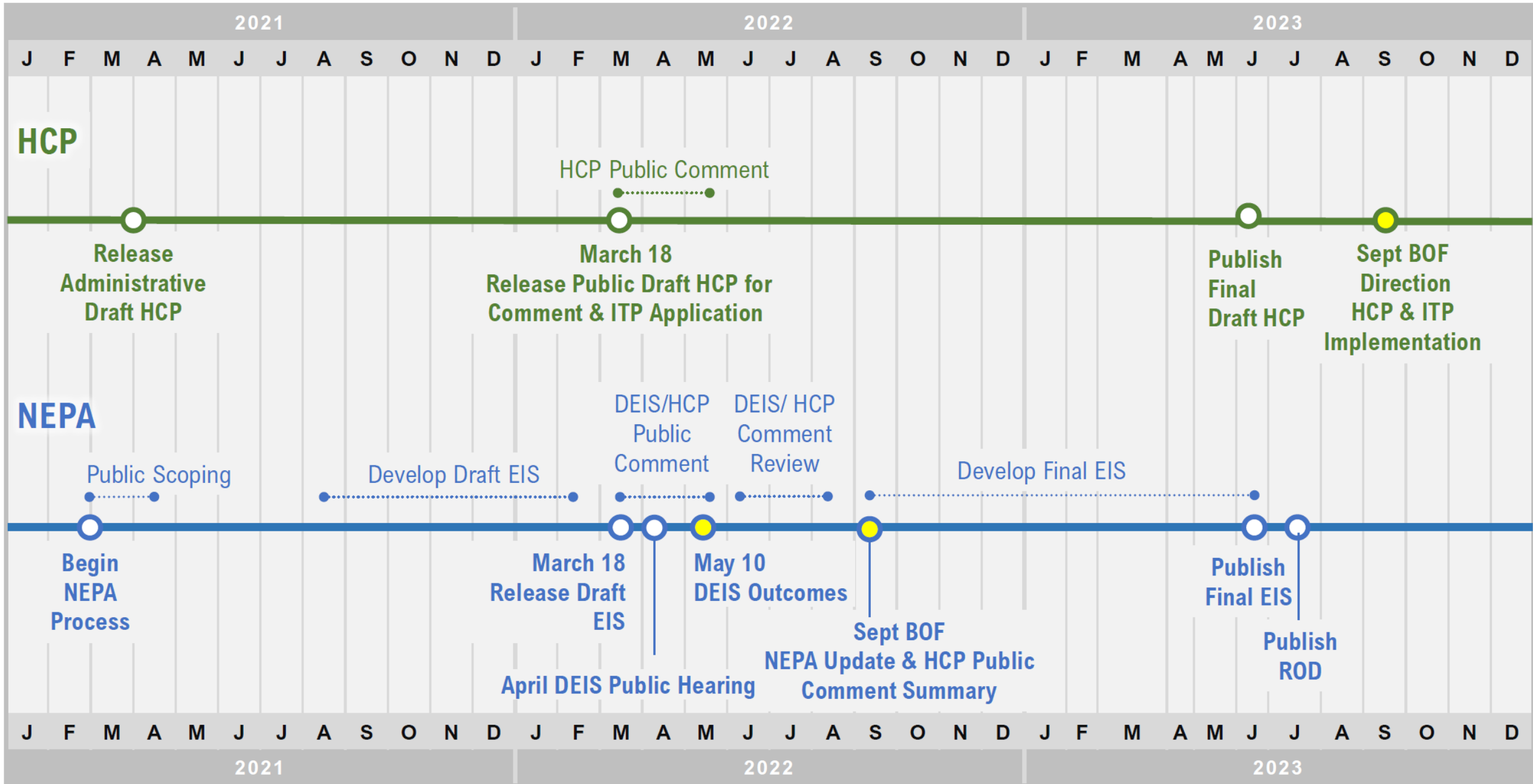


# Western Oregon HCP and NEPA



# Working HCP – NEPA Timeline

● BOF Presentation / Decision



# HCP Process Update

- Responses to HCP Public Comment
- Language Refinement and Clarification
- Streamlining Monitoring and Reporting
- Summary of Changes



# HCP Key Changes

## Chapter 3 – Covered Activities

- Added fish salvage
- Updated roads and trails estimates
- Added clarification around quarries, borrow sites, and stockpiles sites in riparian areas



# HCP Key Changes – Chapter 4

## Terrestrial

- Barred owl management
- Terrestrial species habitat enhancement

## Aquatic

- Special considerations for potentially unstable slopes
- Best management practices (BMPs) for Seasonal Other streams and Equipment Restriction Zone (ERZ)
- Beaver management
- 2022 NMFS Fish Passage and ODFW fish passage requirements

# HCP Key Changes

## Monitoring and Adaptive Management

- Reducing redundancy and clarifying data for HCP monitoring and reporting

## Appendices

- Updating to reflect data and information supporting the HCP





# Q&A and Discussion



# Summary and Next Steps



# NEXT STEPS

JUN  
2023

Anticipated release  
of Draft FMP and  
Modeled Outcomes

SEP 6  
2023

Board of Forestry  
Meeting: Draft  
FMP and HCP  
Direction

JAN  
2024

Board of Forestry  
Meeting: Decision  
to initiate FMP  
Rulemaking

Thank you!

