

Landscape Resiliency in Oregon's Rangelands & the SageCon Partnership

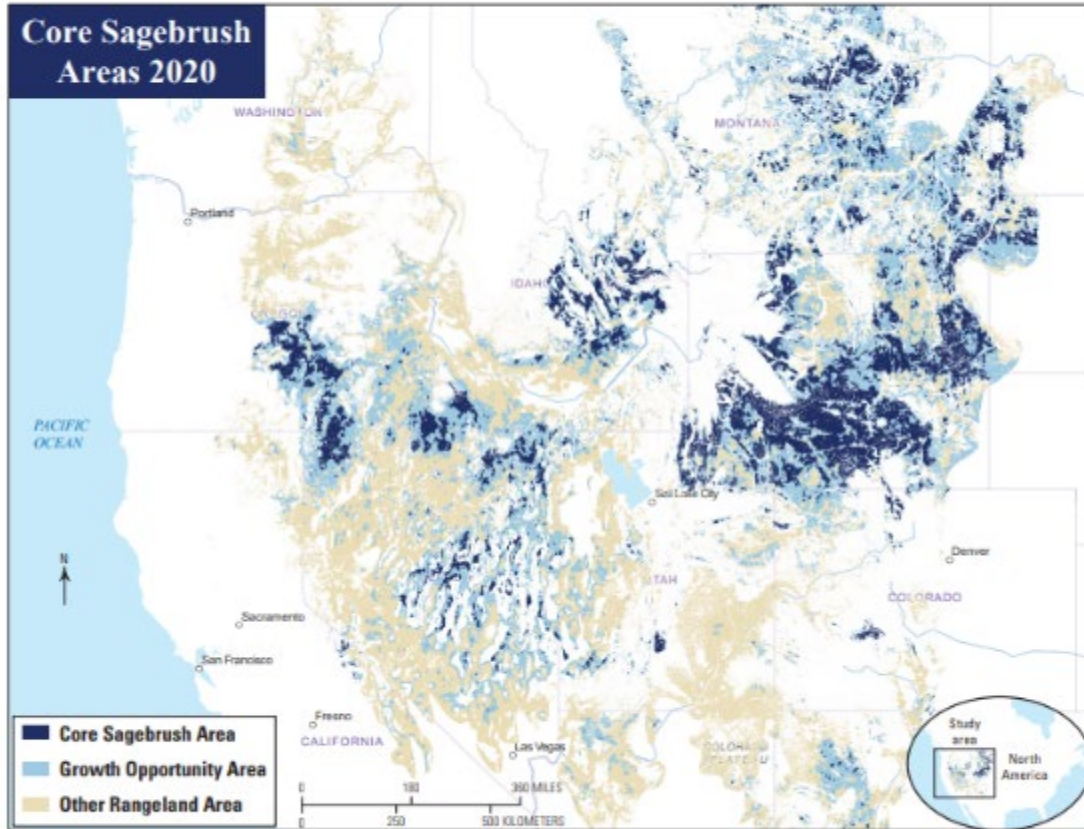
Megan Creutzburg
Institute for Natural Resources

Landscape Resiliency Summit
November 2, 2023



Threats to the Sagebrush Sea

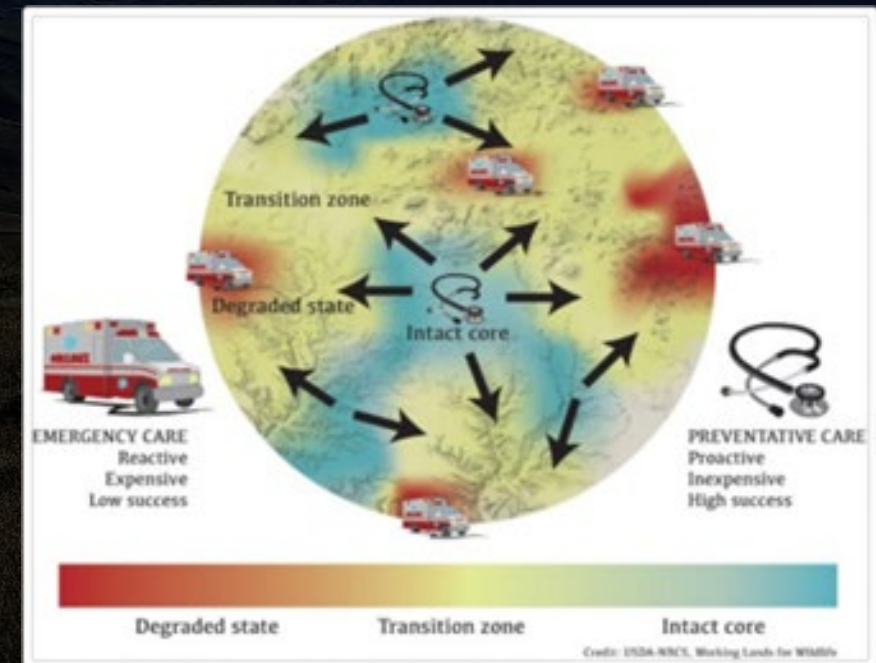
A Sagebrush Conservation Design to Proactively Restore America's Sagebrush Biome



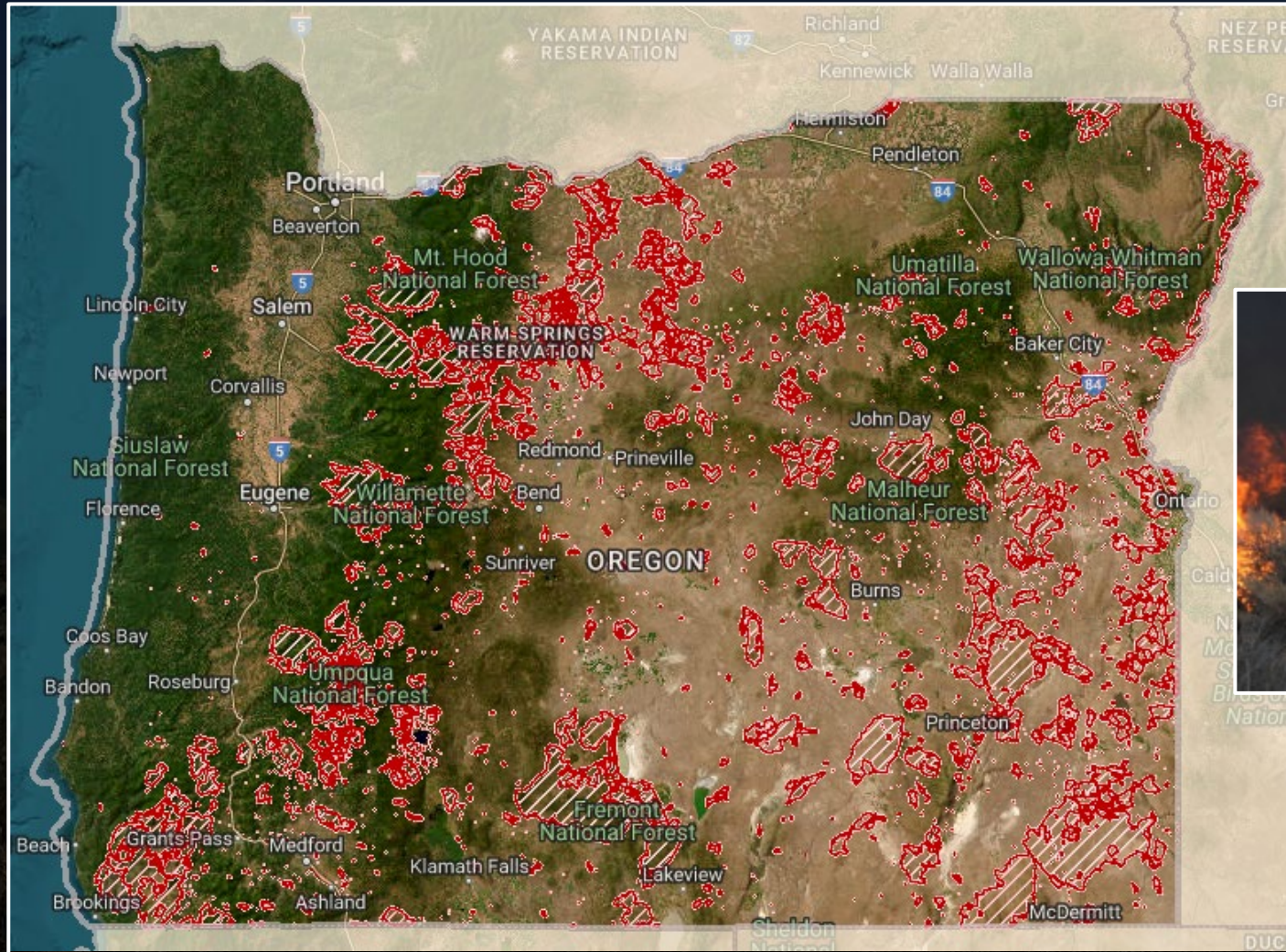
Open-File Report 2022-1081

1.3 million acres of loss on average each year

“Defend and grow the core”:
Strategic, landscape-scale, proactive approach



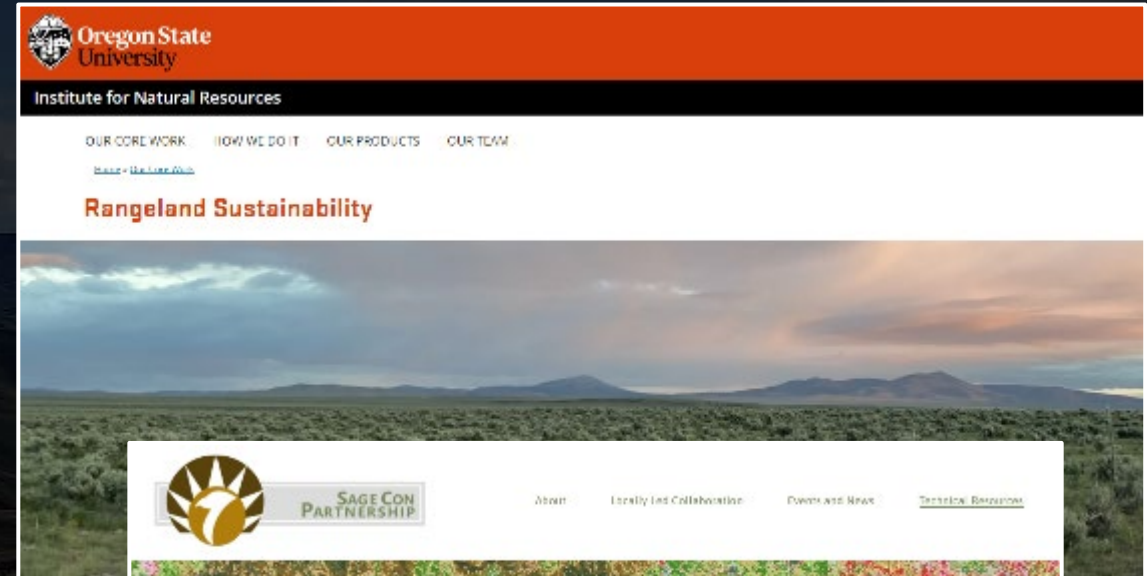
Threats to Oregon's Sagebrush Sea



The SageCon Partnership



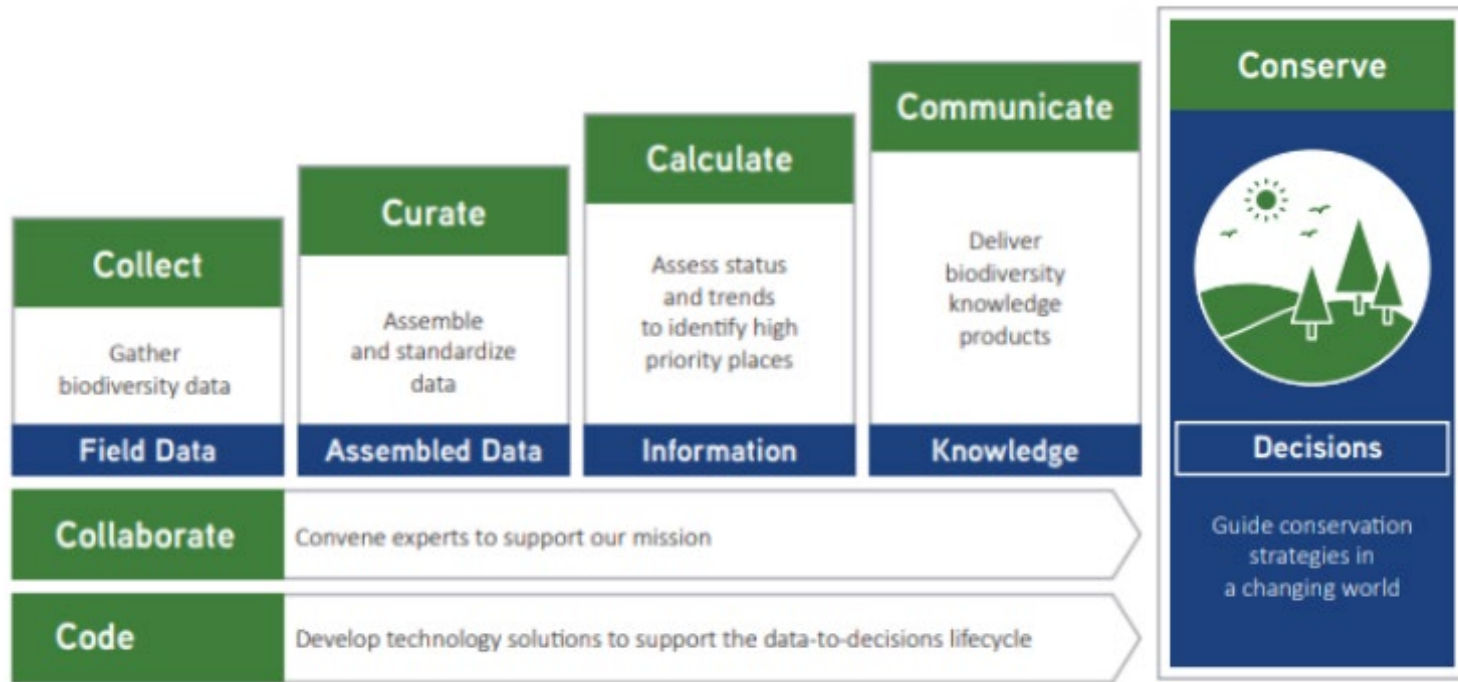
<https://sageconpartnership.com/>



<https://inr.oregonstate.edu/rangeland-sustainability>

The Gap Between Science and Management

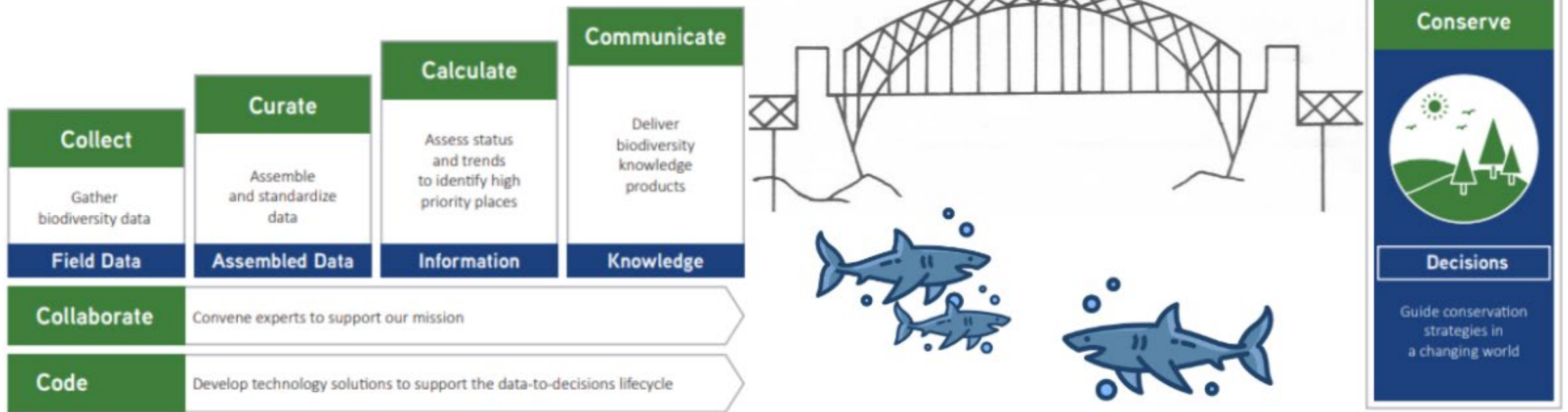
How do we effectively use science, information and technology to improve management outcomes?



From NatureServe

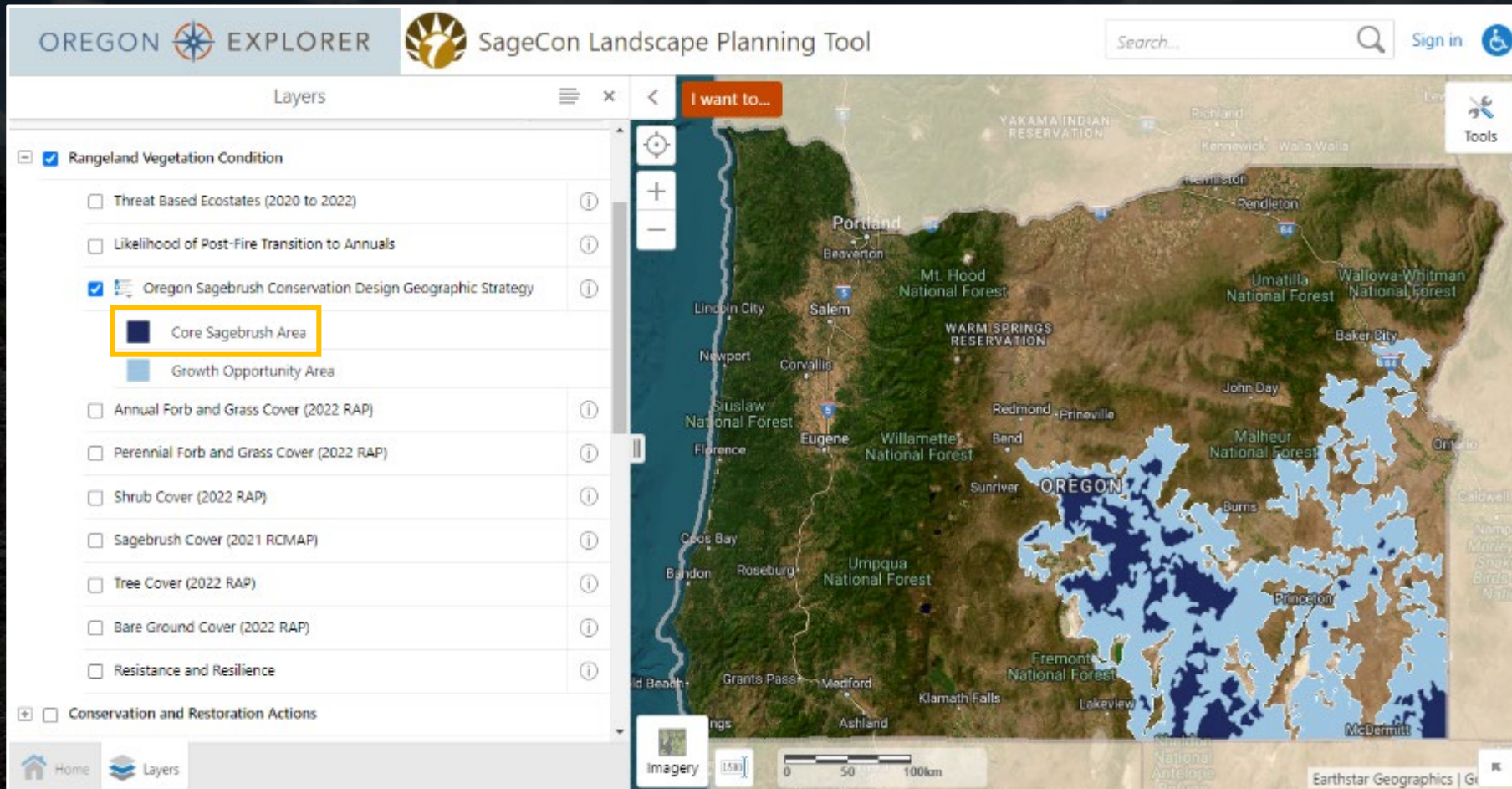
The Gap Between Science and Management

Technical transfer as a bridge between science and practice



Spatial Strategy & Prioritization

A roadmap to defend and grow core sagebrush rangelands in Oregon

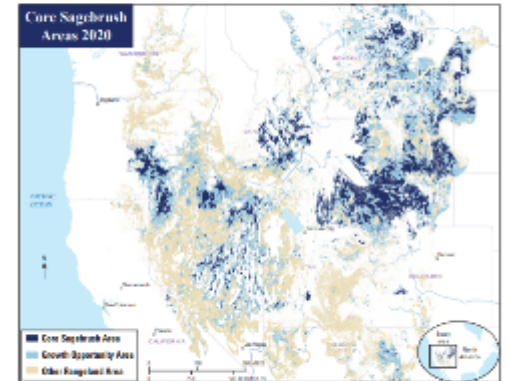


Sagebrush Conservation Design



Prepared in cooperation with the Western Association of Fish and Wildlife Agencies and the U.S. Fish and Wildlife Service

A Sagebrush Conservation Design to Proactively Restore America's Sagebrush Biome

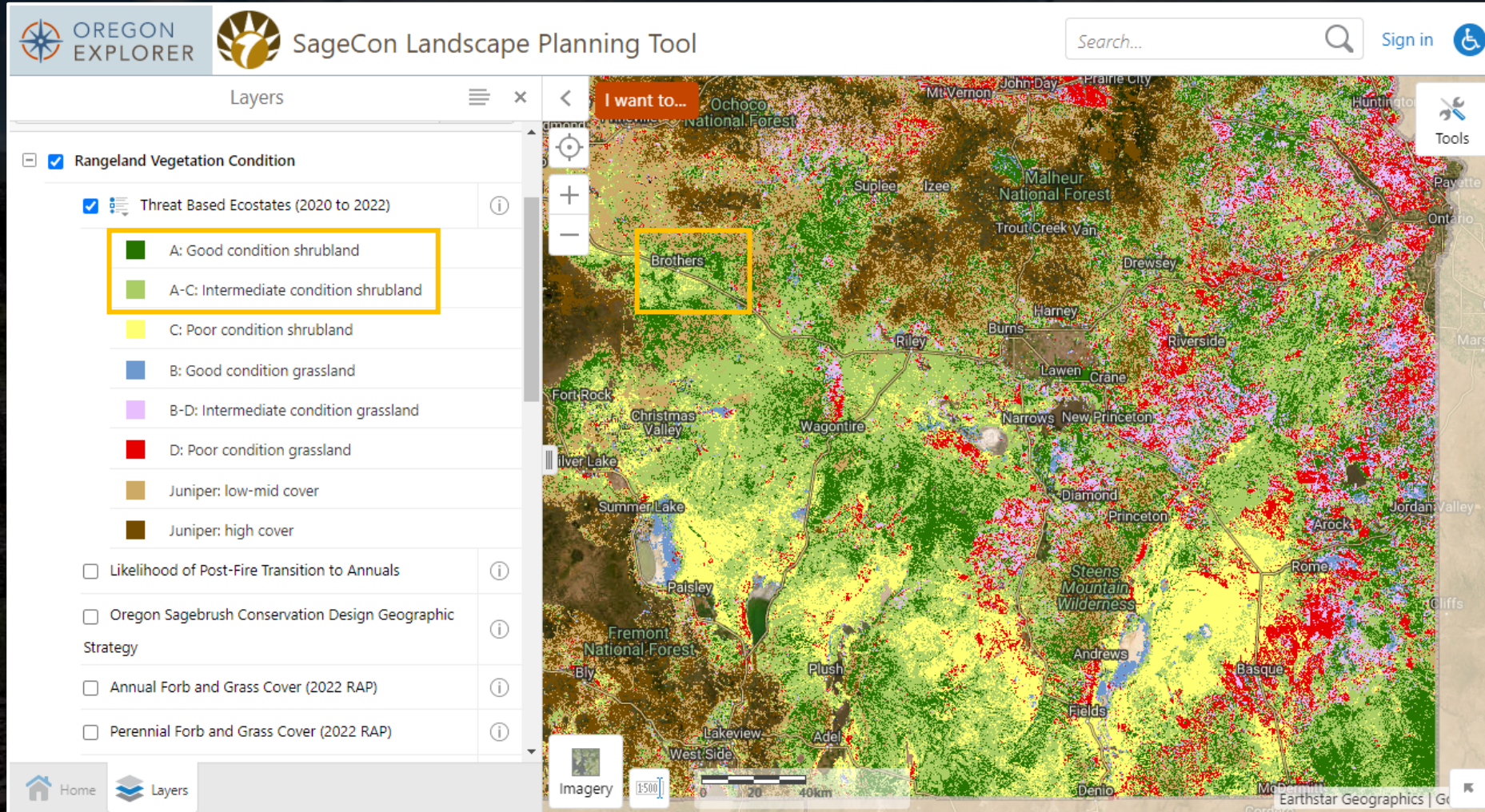


Open-File Report 2022-10B1

U.S. Department of the Interior
U.S. Geological Survey

Spatial Strategy & Prioritization

A roadmap to defend and grow core sagebrush rangelands in Oregon

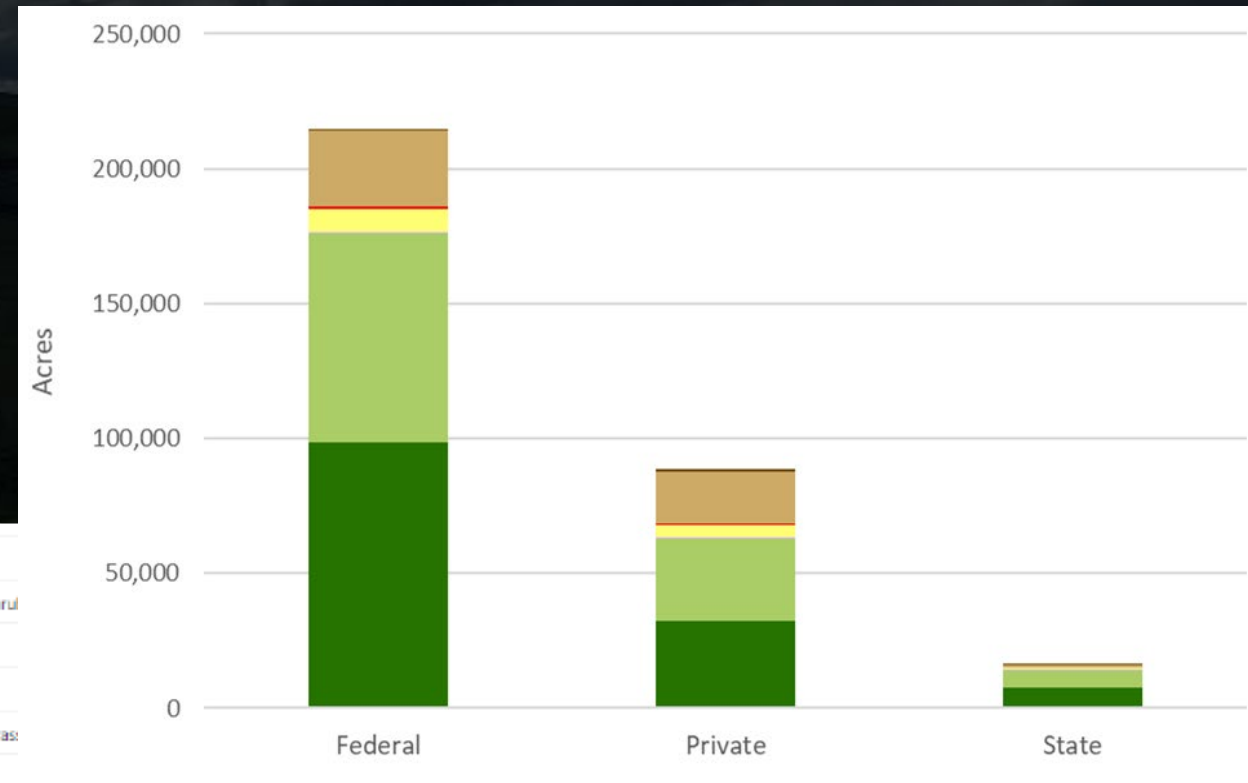
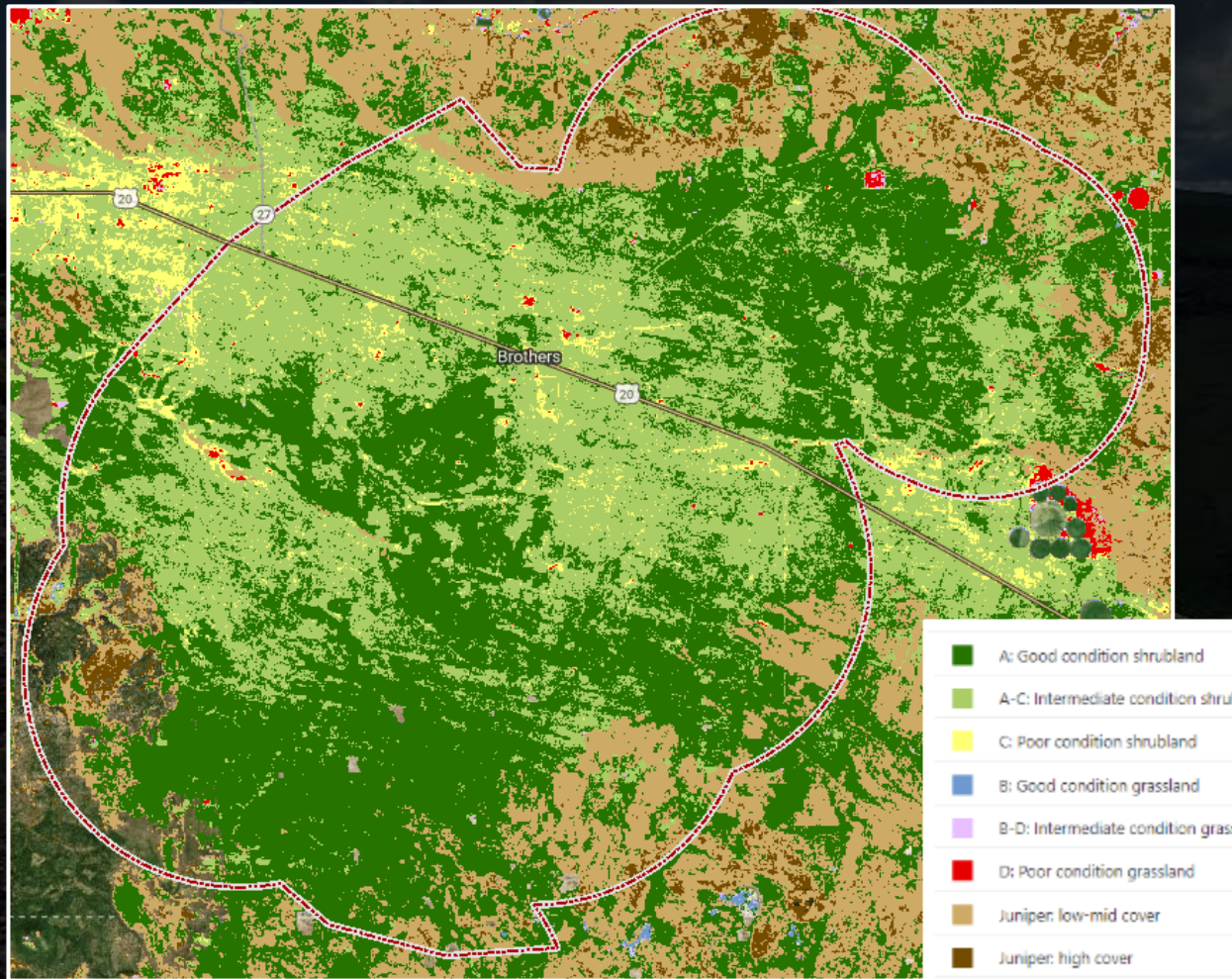


Threat-Based Ecostate maps



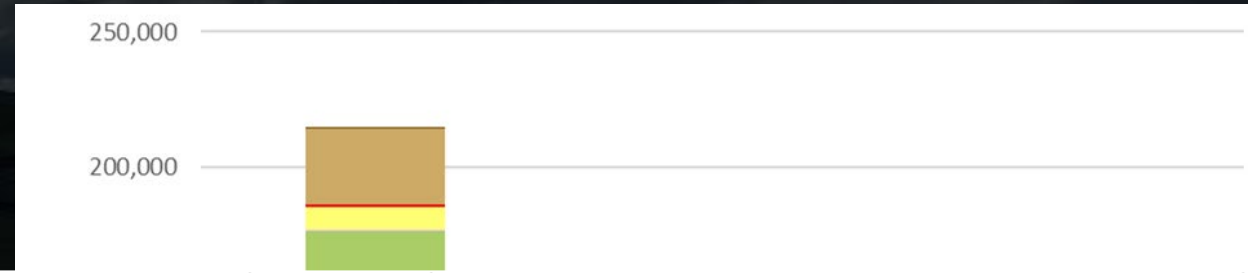
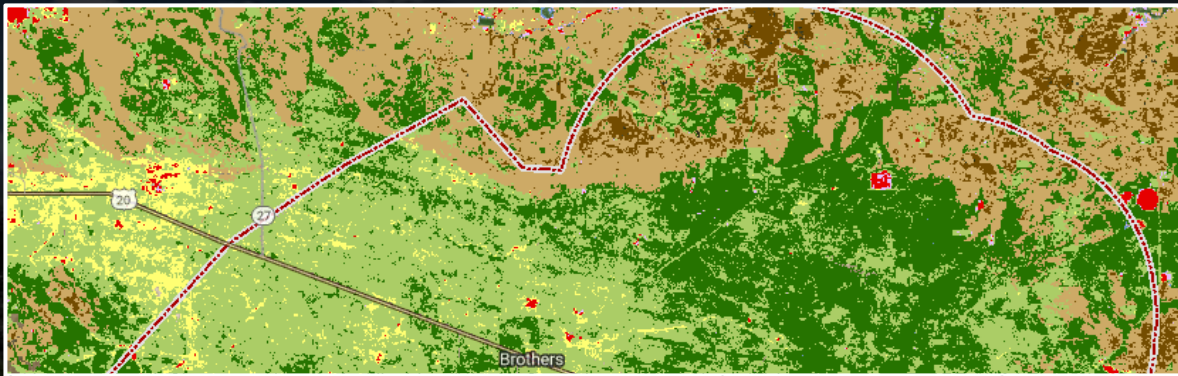
Spatial Strategy & Prioritization

What needs to happen on the ground to defend and grow core sagebrush rangelands?



Spatial Strategy & Prioritization

What needs to happen on the ground to defend and grow core sagebrush rangelands?

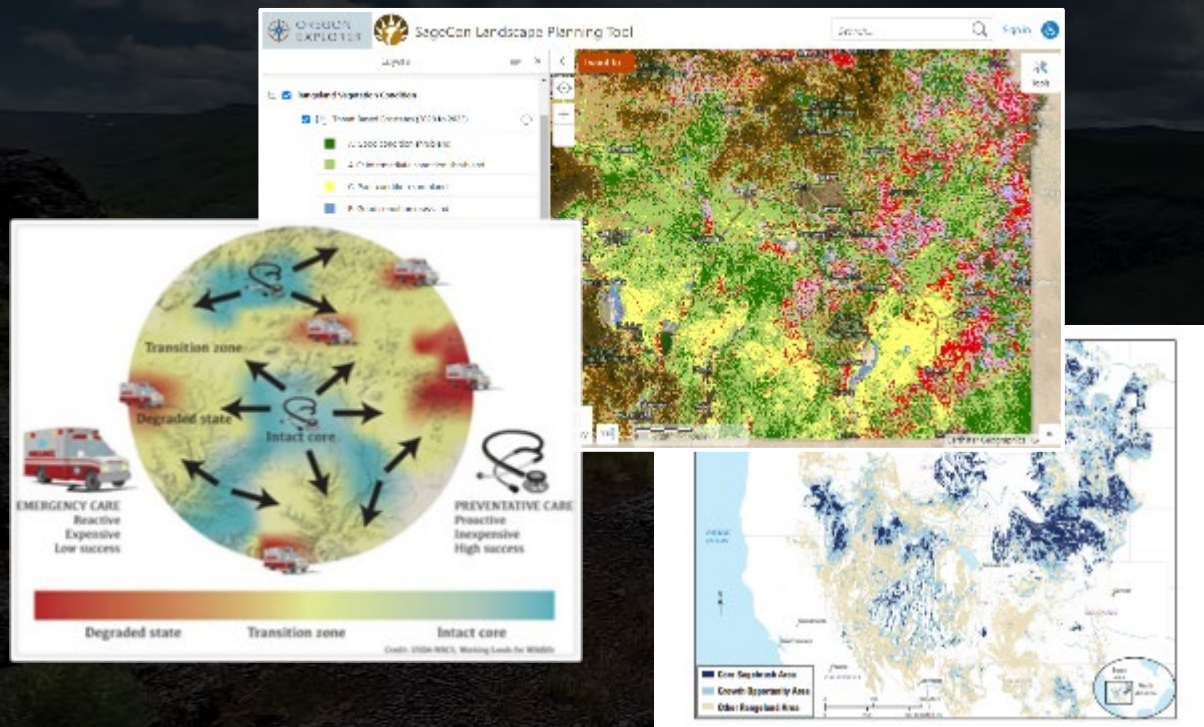


Threat-based Ecostate	Approx Acres	Cost/Acre	Approx Cost	Priority	Potential management needs and actions
A: Good condition shrubland	328,596			Medium	Weed surveys and spot treatments
A-C: Intermediate condition shrubland	111,753	\$ 15	\$ 1,676,295	High	Surveys, spot treatments, spray as needed
B: Good condition grassland	6,289			Low	Seeding sagebrush where needed
B-D: Intermediate condition grassland	16,741			Low	Rescue spray where perennials can recover
C: Poor condition shrubland	11,357			Medium	Spray where possible
D: Poor condition grassland	8,252	\$ 275	\$ 2,269,300	High	Spray & seed; vector control
Juniper: low-mid cover	91,918	\$ 60	\$ 5,515,080	High	Remove phase 1 and early phase 2 juniper
Juniper: high cover	10,545			Low	Remove late phase 2 juniper where possible



Spatial Strategy & Prioritization

Threat-Based Strategic Conservation: Hands-on, interactive workshop to empower collaboratives to develop their own science-informed but locally-derived spatial strategy.



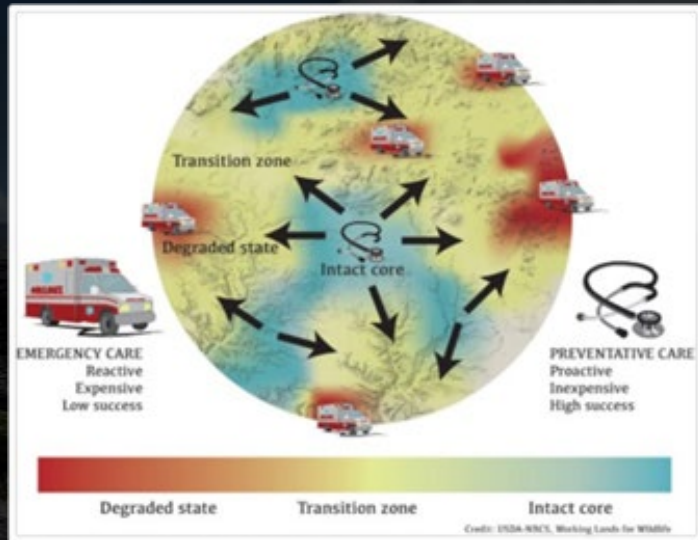
Delivery of data, science and tools;
overarching strategy



Empowerment of local stakeholders to
interpret and apply information

Spatial Strategy & Prioritization

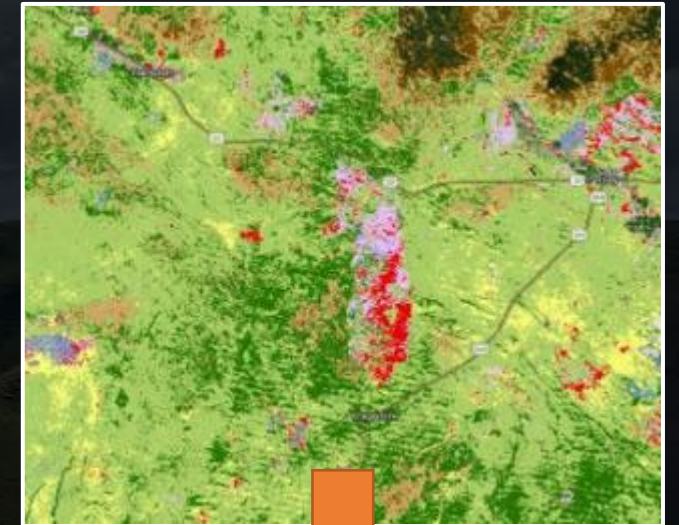
Concepts, principles & technical tools



Facilitated stakeholder process



Science-informed but locally-derived spatial strategy



The SageCon Partnership

Contact me!

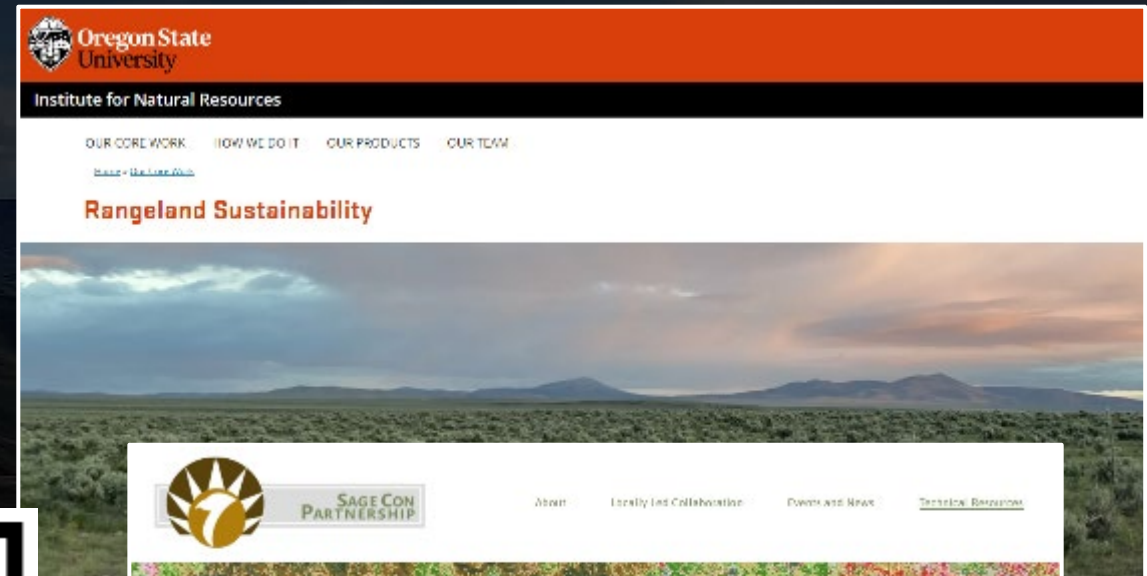
Megan.Creutzburg@oregonstate.edu



<https://sageconpartnership.com/>



<https://sageshare.org/strategic-conservation/>



<https://inr.oregonstate.edu/rangeland-sustainability>