

Developing Oregon's 20-Year Landscape Resiliency Strategy

**Statewide Stakeholder Advisory Group
April 11th, 2023**

Stakeholder Review Process

- Provide Draft 1: May 2
 - Written comments returned: May 12
- May Stakeholder meeting: May 9
 - Receive comments and consider revisions
- SLG Meeting: May 19
- Provide Draft 2: May 24
 - Written comments returned: June 2
- June Stakeholder meeting: June 13
 - Receive comments and consider revisions
- SLG meeting: June 16
 - Potential endorsement

Post Endorsement (July-Sept)

Agencies finalize text and confirm data

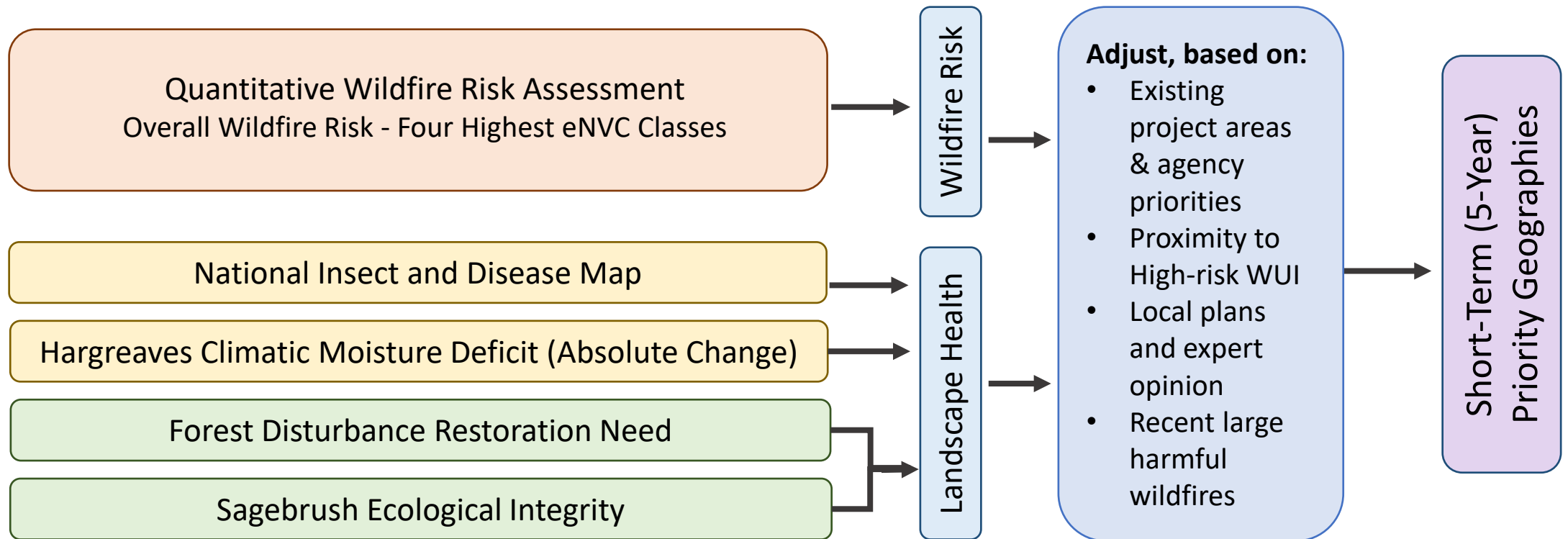
Report Layout and photos

SLG signatures

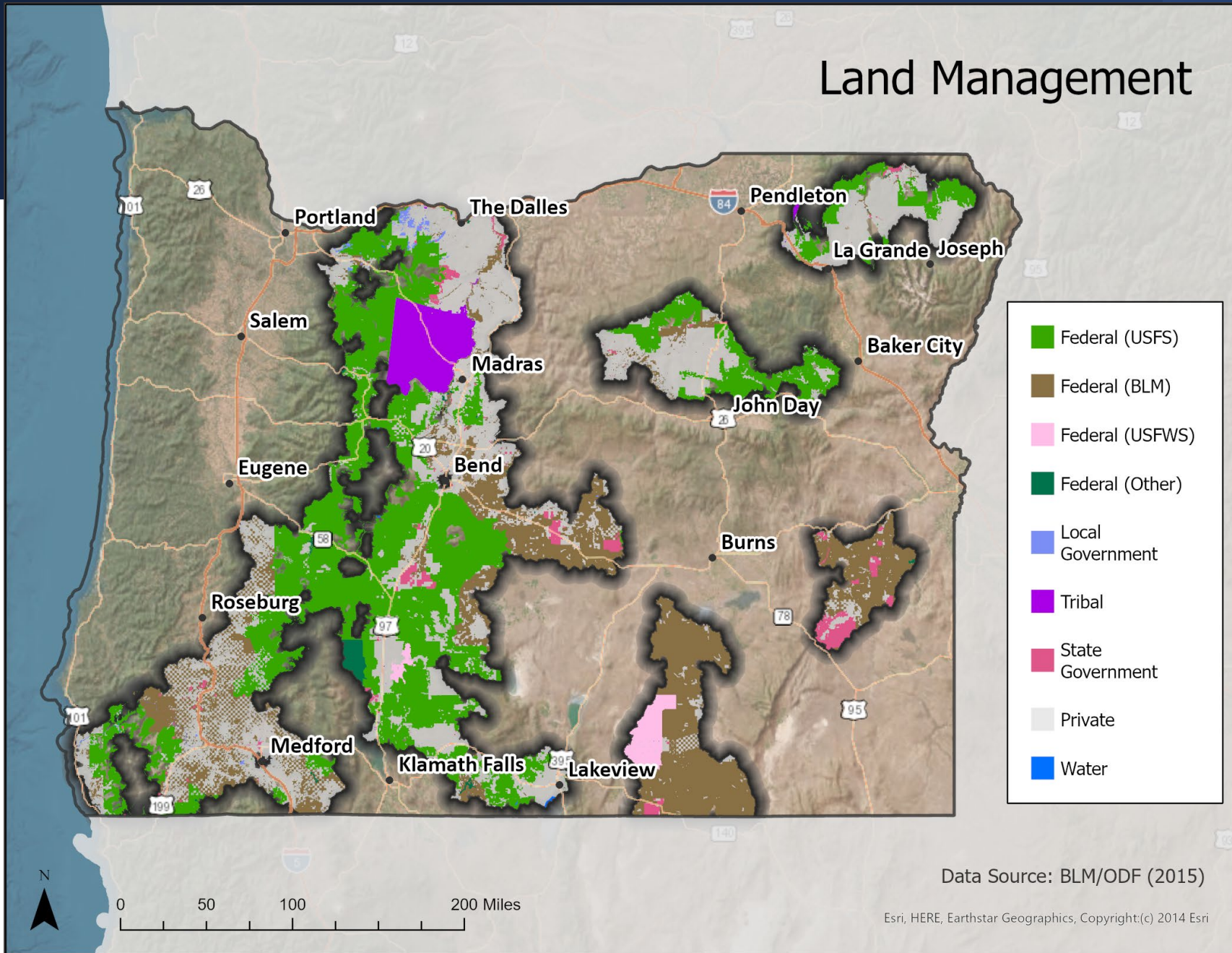
Report production

Release report (press conference?). Probably September.

Identifying Short-Term Priority Geographies



Land Management



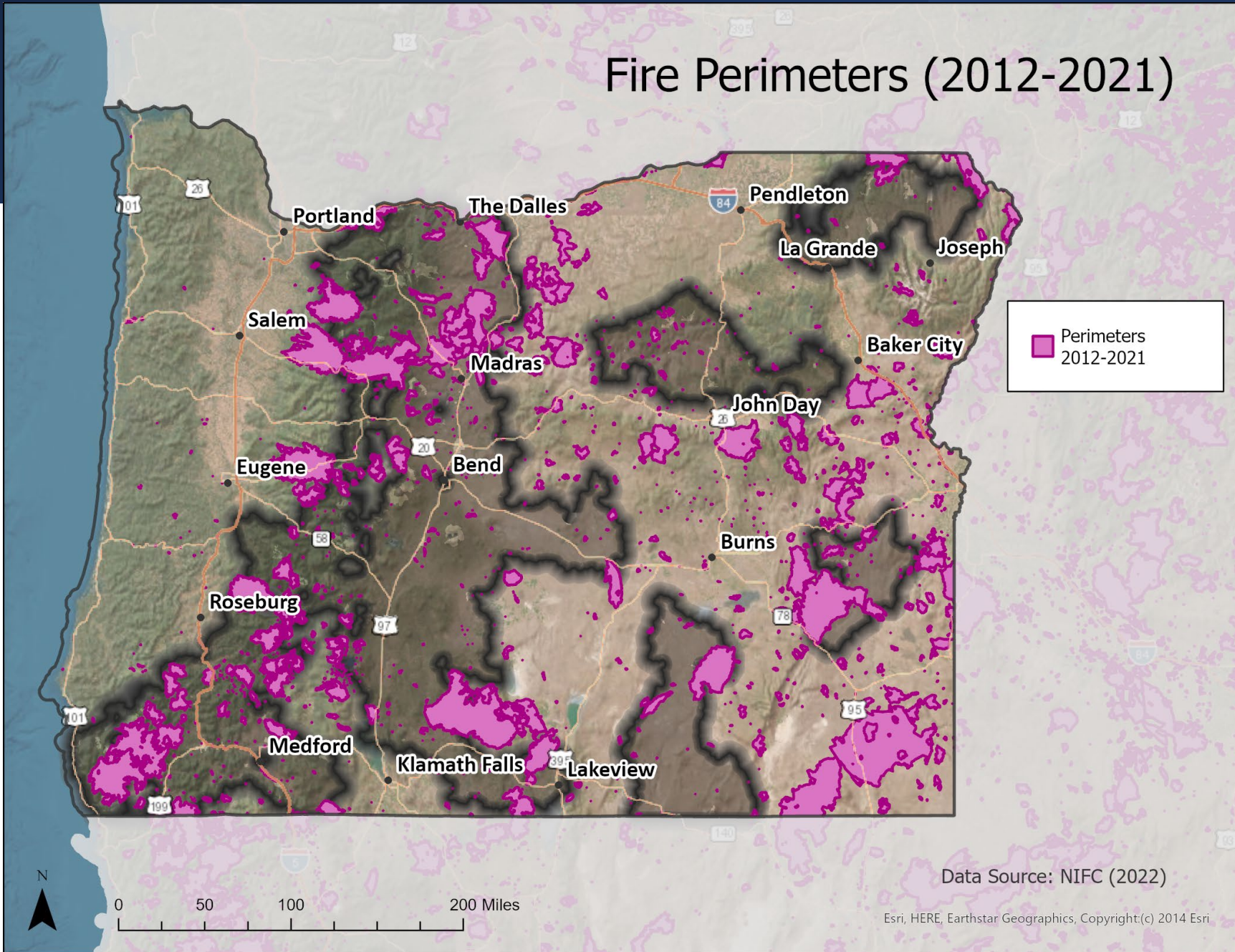
17.9 m Acres

Federal (USFS)	33 %
Private	32 %
Federal (BLM)	22 %
Tribal	4 %
State Government	2 %
Federal (USFWS)	1 %
Federal (Other)	<1 %
Local Government	<1 %

Data Source: BLM/ODF (2015)

Esri, HERE, Earthstar Geographics, Copyright:(c) 2014 Esri

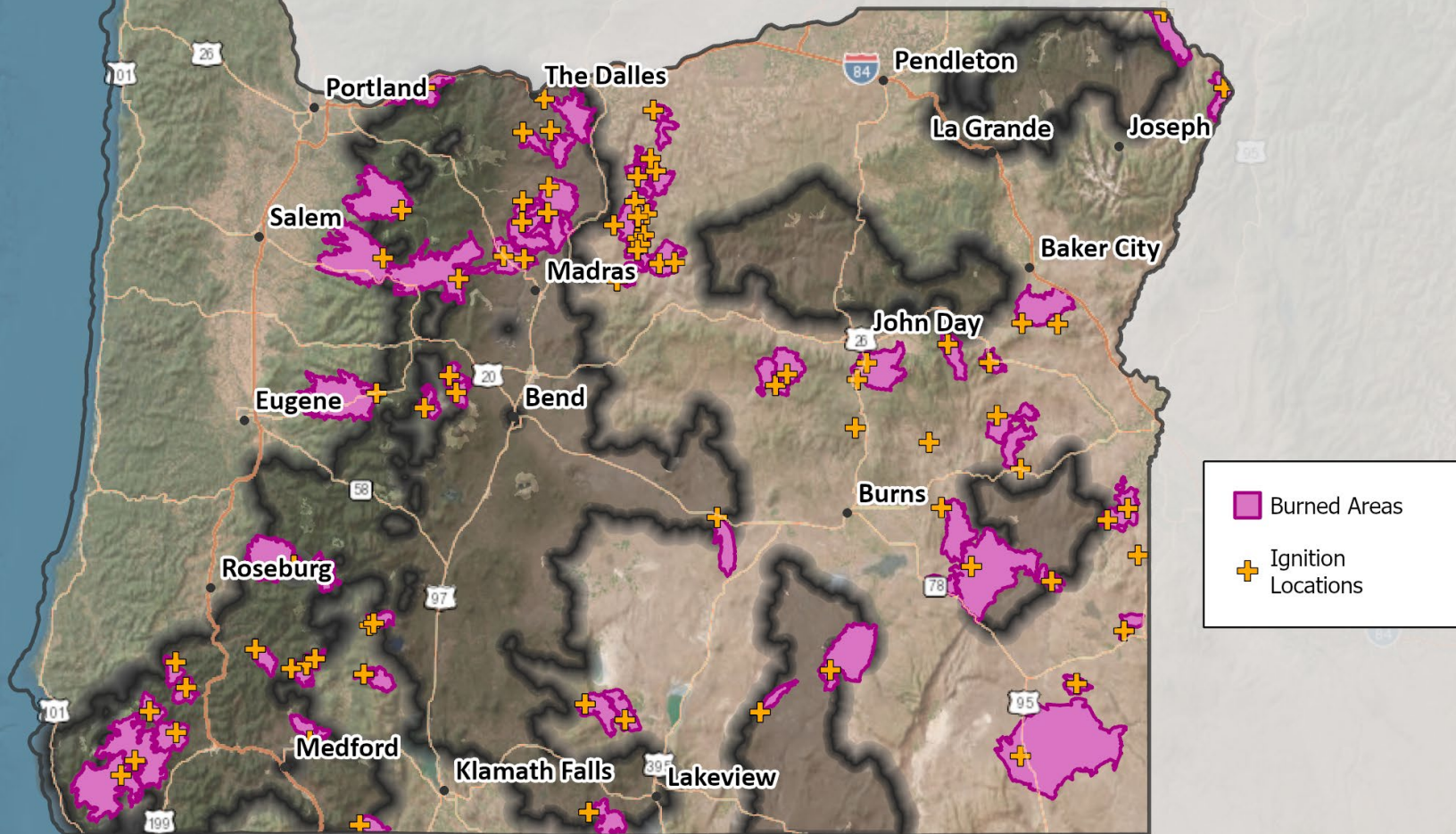
Fire Perimeters (2012-2021)



Data Source: NIFC (2022)

Esri, HERE, Earthstar Geographics, Copyright:(c) 2014 Esri

Fire Perimeters and Ignition Locations For Fires \geq 20,000 Acres (2011-2020)

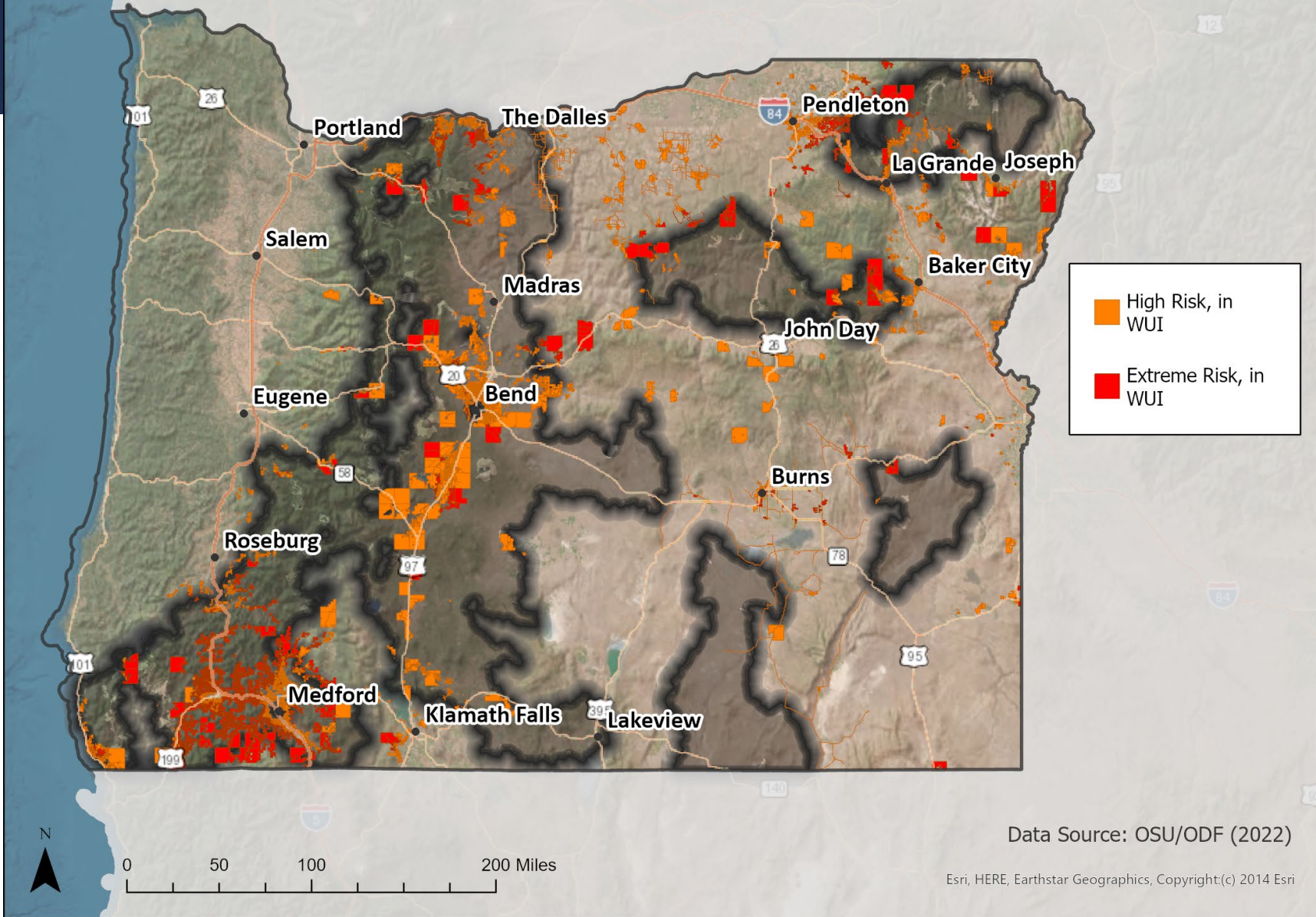


Data Sources: MTBS Burned Area Boundaries Dataset (2021), Short, Karen C. 2022. Spatial wildfire occurrence data for the United States, 1992-2020 [FPA_FOD_20221014]. 6th Edition. Fort Collins, CO: Forest Service Research Data Archive. <https://doi.org/10.2737/RDS-2013-0009.6>



0 50 100 200 Miles

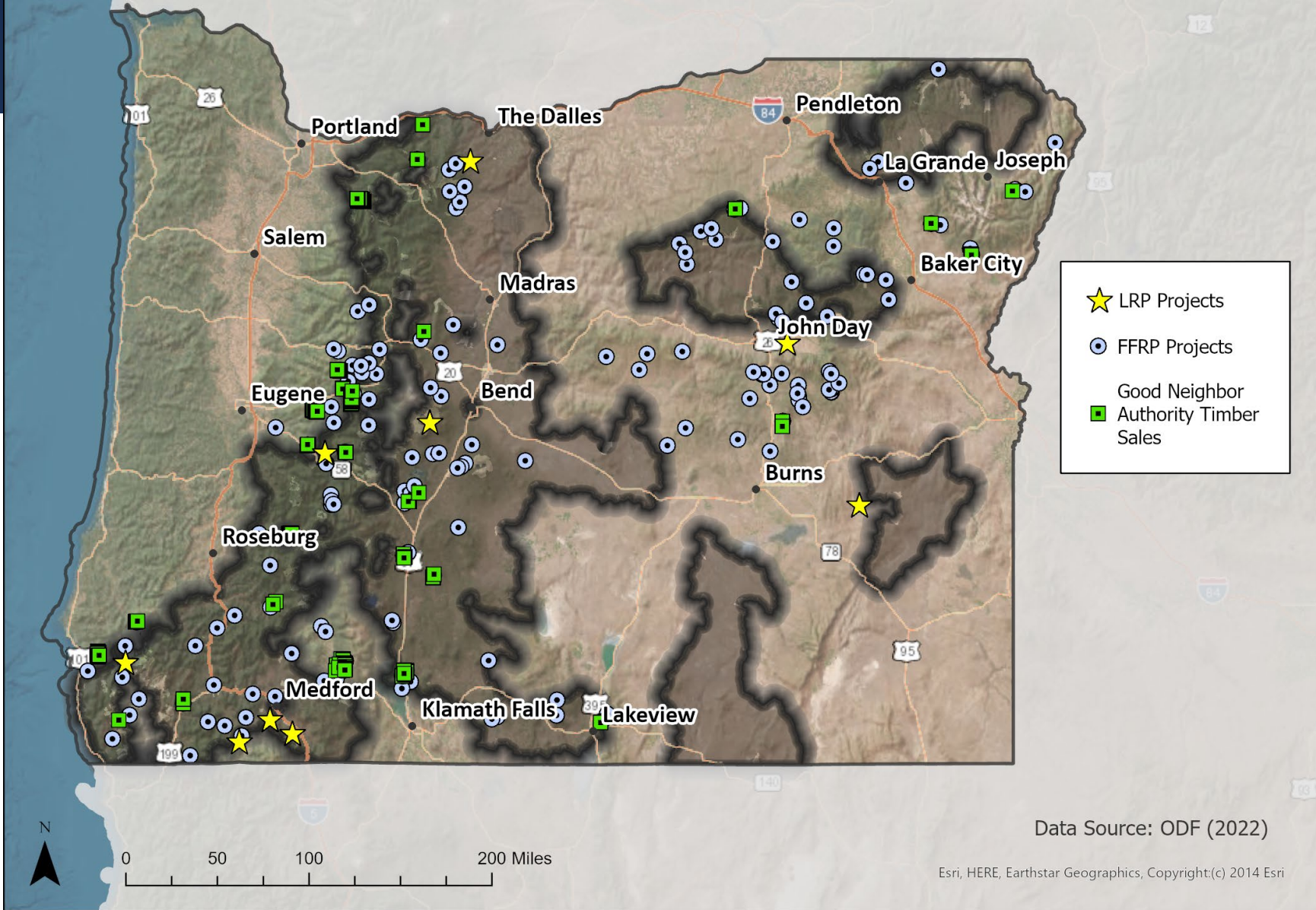
WUI Areas in High and Extreme Risk (June 2022 Data)



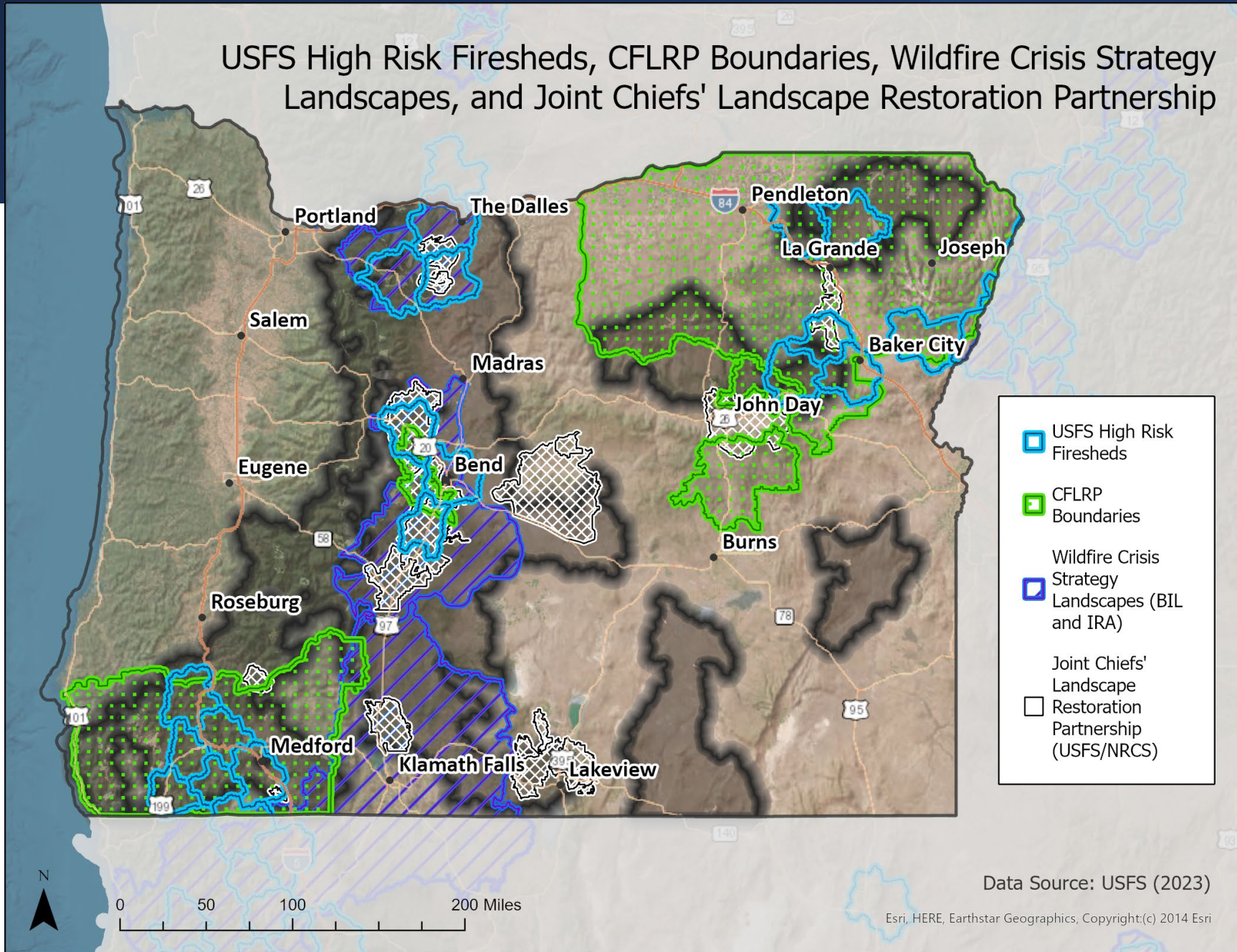
Data Source: OSU/ODF (2022)

Esri, HERE, Earthstar Geographics, Copyright:(c) 2014 Esri

LRP Projects, FFRP Projects, and Good Neighbor Authority Timber Sales



USFS High Risk Firesheds, CFLRP Boundaries, Wildfire Crisis Strategy Landscapes, and Joint Chiefs' Landscape Restoration Partnership



Data Source: USFS (2023)

Esri, HERE, Earthstar Geographics, Copyright:(c) 2014 Esri

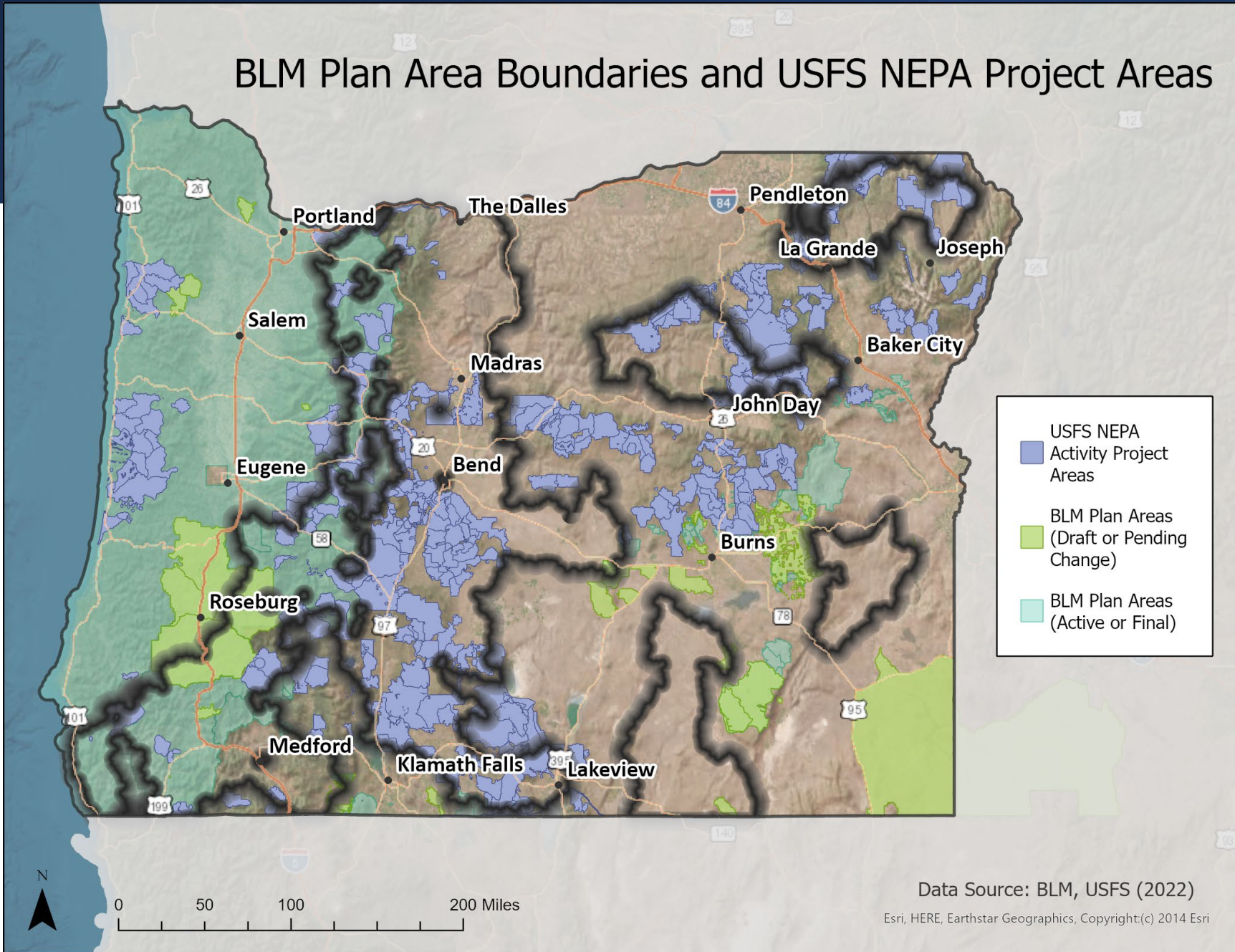
2022 Community Wildfire Defense Grants



Data Source: Community Wildfire Defense Grant Program

Esri, HERE, Earthstar Geographics, Copyright:(c) 2014 Esri

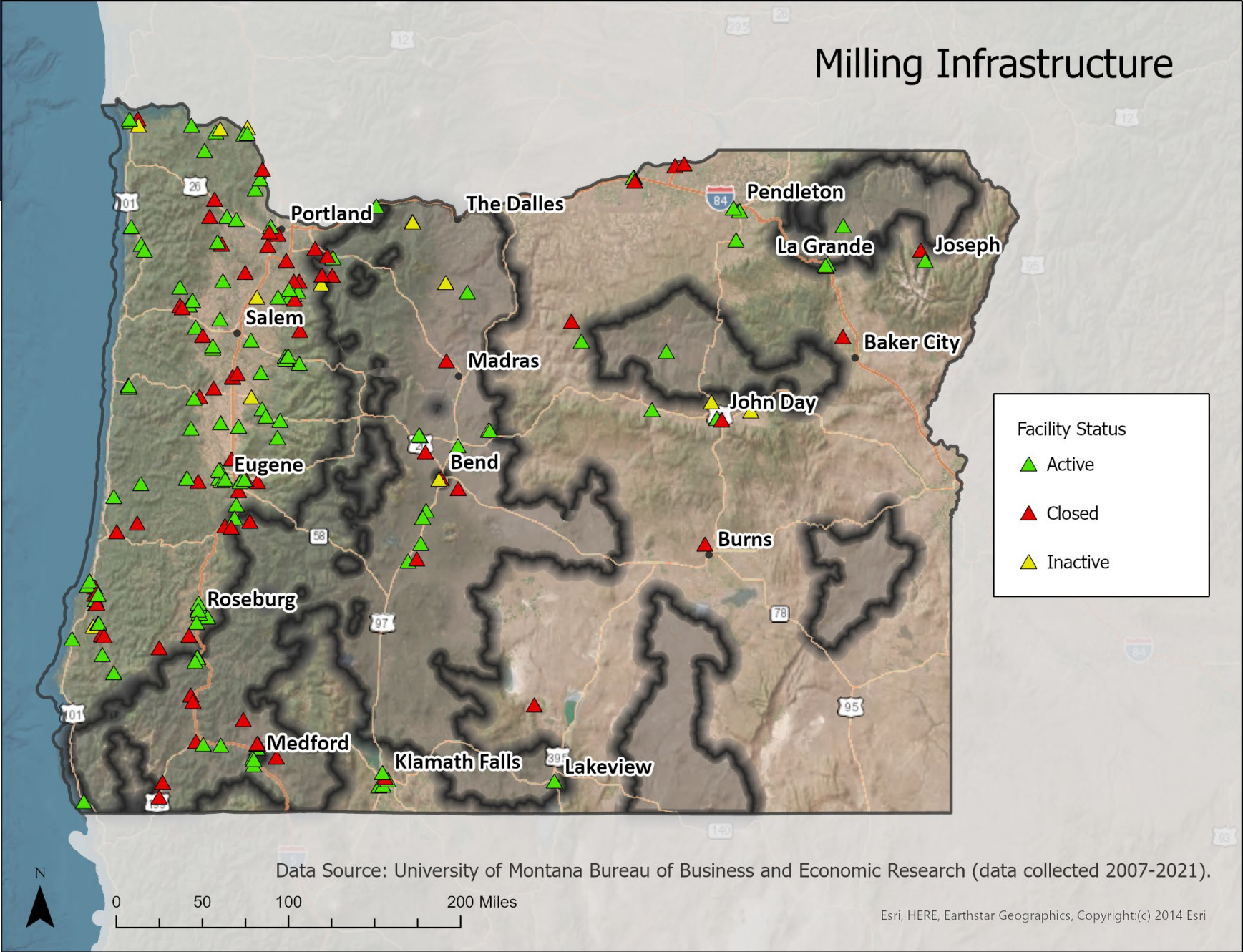
BLM Plan Area Boundaries and USFS NEPA Project Areas



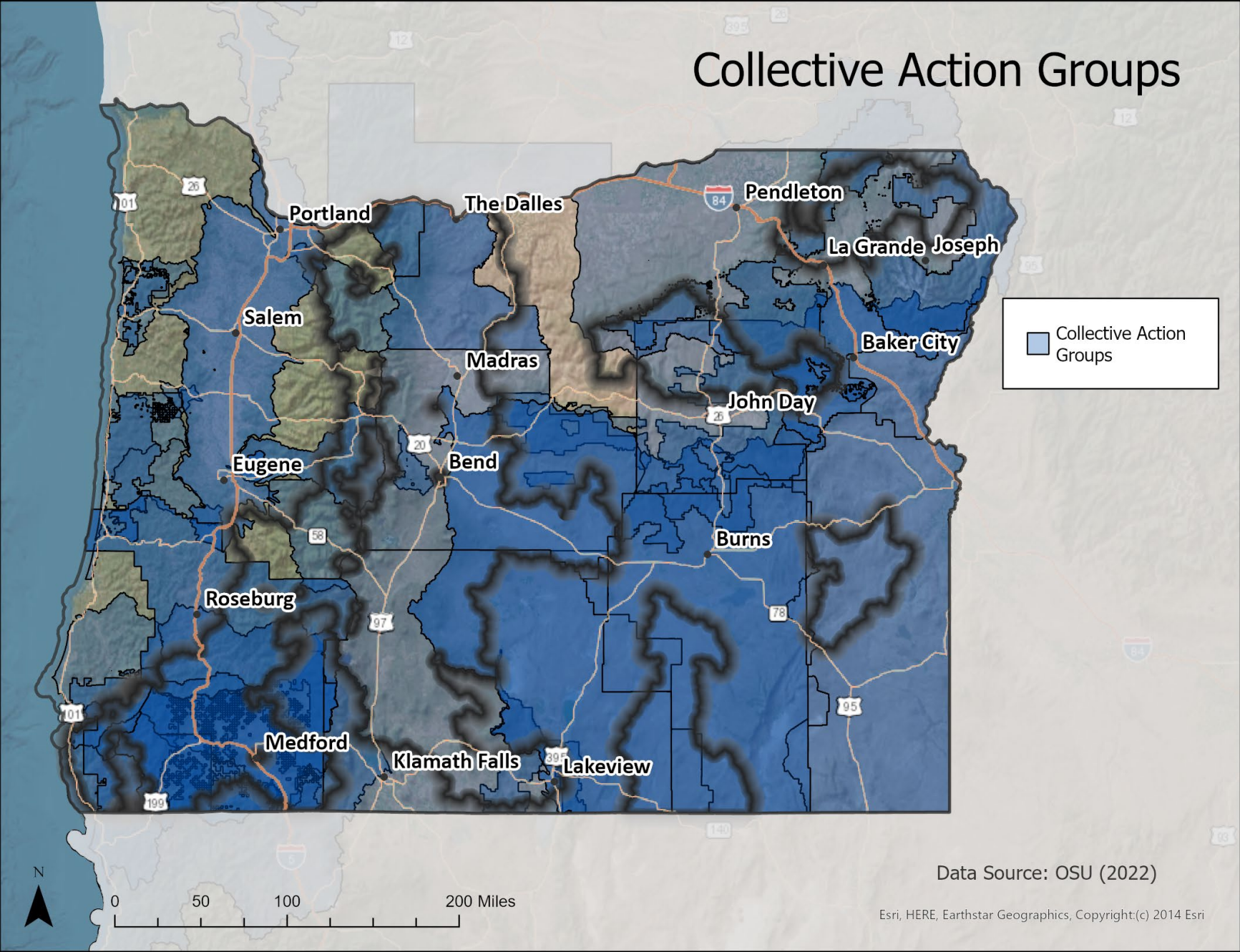
Data Source: BLM, USFS (2022)

Esri, HERE, Earthstar Geographics, Copyright:(c) 2014 Esri

Milling Infrastructure



Collective Action Groups



44 Collective
Action Groups

Data Source: OSU (2022)

Esri, HERE, Earthstar Geographics, Copyright:(c) 2014 Esri

Report Outline

Introduction

- Need for new approach: Growth in large, harmful, and uncharacteristic Wildfires; Climate change, etc.
- Directed by SB 762; Based in Shared Stewardship, MOU, Cohesive Strategy, Gov's Wildfire Council

Vision and Strategic Elements

Governance and Engagement

Prioritizing Investments in Landscape Resilience

- Initial Priority Geographies
- Priority Actions
- Funding Sources and Programs
- Goals and Metrics

Tracking, reporting and updating

- Decision Support
- Dashboard/website
- Collecting and sharing information

Implementing the Strategy

- Guide resources to priority areas
- Coordinate investments across agencies/ownerships
- Strengthen agency-regional partnerships

Near-term components for implementation

- Partner Summit
- SARA
- Decision Support
- Dashboard/website
- Local planning and MOUs

SMART Goals and Targets

Specific

Measurable

Attainable

Relevant

Time-bound

Criteria for Goals

- High-level
- Efficient to measure
- Not too many
- Outcomes, process and actions

Proposed Goal Topics

**Governance &
Engagement**

**Capacity &
Readiness**

Funding

**Tracking &
Accountability**

**Landscape
Conditions**

**Catastrophic
Wildfires**

Strategic Elements

- Reduce Wildfire Risk to Communities
- Enhance resilience in landscapes in the face of climate change
- Create functional aquatic and terrestrial ecosystems
- Support vibrant local economies
- Protect healthy watersheds and water resources
- Provide quality outdoor opportunities for all Oregonians
- Promote equity through the stewardship of landscape

Landscape Condition

Components

- Forest health and resilience
- Sagebrush health and resilience
- Range health and resilience

Potential Metrics

- Percent of acres in a healthy and resilient state
- Acres effectively treated

Example Goals

- 20 yr Goal: 100% of Oregon's landscapes are in a resilient condition by 2043
- Near-term Goal: XX million acres in priority geographies effectively treated by 2028 (first 5 yrs), and increasing as appropriate.

Uncharacteristic Wildfires

Components

- Large, severe Wildfires
- Structures burned
- Others?

Potential Metrics

- # of uncharacteristic wildfires
- Size of uncharacteristic wildfires
- # of structures burned

Example Goals

- Achieve a downward trend in the number and size of uncharacteristic wildfires and structures burned by 2033 (10 yrs).

Governance & Engagement

Components

- Groups/Entities: SLG; Tribes; ACIG; Statewide Stakeholders; Regional/Local Stakeholder
- Projects: Cross-boundary; Multi-agency

Potential Metrics

- # of opportunities for engagement
- # of coordinated cross-boundary projects

Example Goals

- ??
- XX cross-boundary projects are initiated by 2028 (5 yrs).

Capacity & Readiness

Components

- Local groups
- Agencies
- NEPA
- Local planning
- Contractor Capacity

Potential Metrics

- Percent of priority geographies capable of implementing treatments
- Percent of priority geographies with local assessments and strategies.
- Percent of priority geographies requiring NEPA that are NEPA-cleared.

Example Goals

- Treatments can be implemented in 100% of priority geographies by 2038 (15 yrs).
- Local landscape assessments are initiated in all priority geographies by 2028 (5 yrs).
- NEPA is identified and prioritized in appropriate places in all priority geographies by 2028.

Funding

Components

- State Funding
- Federal Funding
- Private Funding

Potential Metrics

- Alignment of funding needs with funding availability

Example Goals

- Resources from state, federal and private sources are commensurate with needs to achieve intended pace and scale of treatments, capacity, and readiness.

Tracking & Accountability

Components

- Agency data
- Landscape change and condition
- Local groups
- Financial data
- Activity data

Potential Metrics

- # of agencies contributing info
- Completeness of data provided
- Dashboard with publicly available information

Example Goals

- All partner agencies annually contributing relevant activity, financial, and landscape condition data by 2025.
- Web-based Dashboard to track goal metrics is publicly available by 2025 and updated annually.

Proposed Goals

Landscape Condition

- 20 yr Goal: 100% of Oregon's landscapes are in a resilient condition by 2043
- Near-term Goal: XX million acres in priority geographies effectively treated by 2028 (first 5 yrs), and increasing as appropriate.

Uncharacteristic Wildfire

- Achieve a downward trend in the number and size of uncharacteristic wildfires and structures burned by 2033 (10 yrs).

Governance & Engagement

- XX cross-boundary projects are initiated by 2028 (5 yrs).

Capacity and Readiness

- Treatments can be implemented in 100% of priority geographies by 2038 (15 yrs).
- Local landscape assessments are initiated in all priority geographies by 2028 (5 yrs).
- NEPA is identified and prioritized in appropriate places in all priority geographies by 2028.

Funding

- Resources from state, federal and private sources are commensurate with needs to achieve intended pace and scale of treatments, capacity, and readiness.

Tracking & Accountability

- All partner agencies annually contributing relevant activity, financial, and landscape condition data by 2025.
- Web-based Dashboard to track goal metrics is publicly available by 2025 and updated annually.

Proposed Partner Summit

Purpose

- Bring all the partners together to kickstart implementation of the *20-Year Landscape Resiliency Strategy*
 - Demonstrate agency commitment, perhaps with funding announcements
 - Develop understanding of how all the pieces fit together (priority areas, funding, accountability, etc.)
 - Surface and address concerns, barriers, etc., especially among regional groups (and perhaps tribes)
 - Develop next steps for moving all the components forward

When

- Perhaps late September or October.
 - Ideally after the height of fire season
- One day or more?

Where: Options include:

- Portland
- Salem
- A central location like Bend
- Other location that is easy to access for attendees

Proposed Partner Summit

Participants (80-150 people?)

- SLG members
- Governors office staff (and perhaps the Governor?)
- Tribes
- Legislators? (could be invited)
- ACIG members
- Statewide Stakeholders
- Regional groups/partners (collective action groups)
- Private landowners and industries
- Interested local government staff (city, county, etc.)
- Agency Tribal liaisons
- Decision support and SARA partners (agency staff, researchers, NGO staff, etc.)
- Agency Staff
 - Communications staff
 - Agency GIS staff
 - Agency staff affected by or involved in the strategy (regional staff, program leads, etc)
- Others?

Proposed Agenda Components

Welcome and introductions

- Purpose and what to expect
- Land Acknowledgement
- Quick scan of the room.

Opening remarks/Keynote

- Statement of importance and engagement from Governor, high-level federal official, Legislator, or SLG members

Overview of the *20-Year Landscape Resiliency Strategy*

- Brief summary of the strategy and how all the components fit together

SLG Roundtable

- How each agency is committed to the vision, goals, and approach of the strategy
- Possible announcements of financial commitments or other demonstrations of action.

Topic-oriented Breakouts/Roundtables

- Local Planning/Landscape Assessments
- Coordinating funding sources
- Capacity building for collective action groups
- Prescribed burning
- Equity
- Sharing information across agencies
- Biomass Utilization

Group-oriented Breakout sessions

Outcome is a set of next steps for each group

- SLG members, ACIG Staff and legislators
- Tribes and tribal liaisons
- Regional groups by region
- Communication staff
- Agency GIS staff
- Decision support and SARA
- Statewide Stakeholders

Thank You