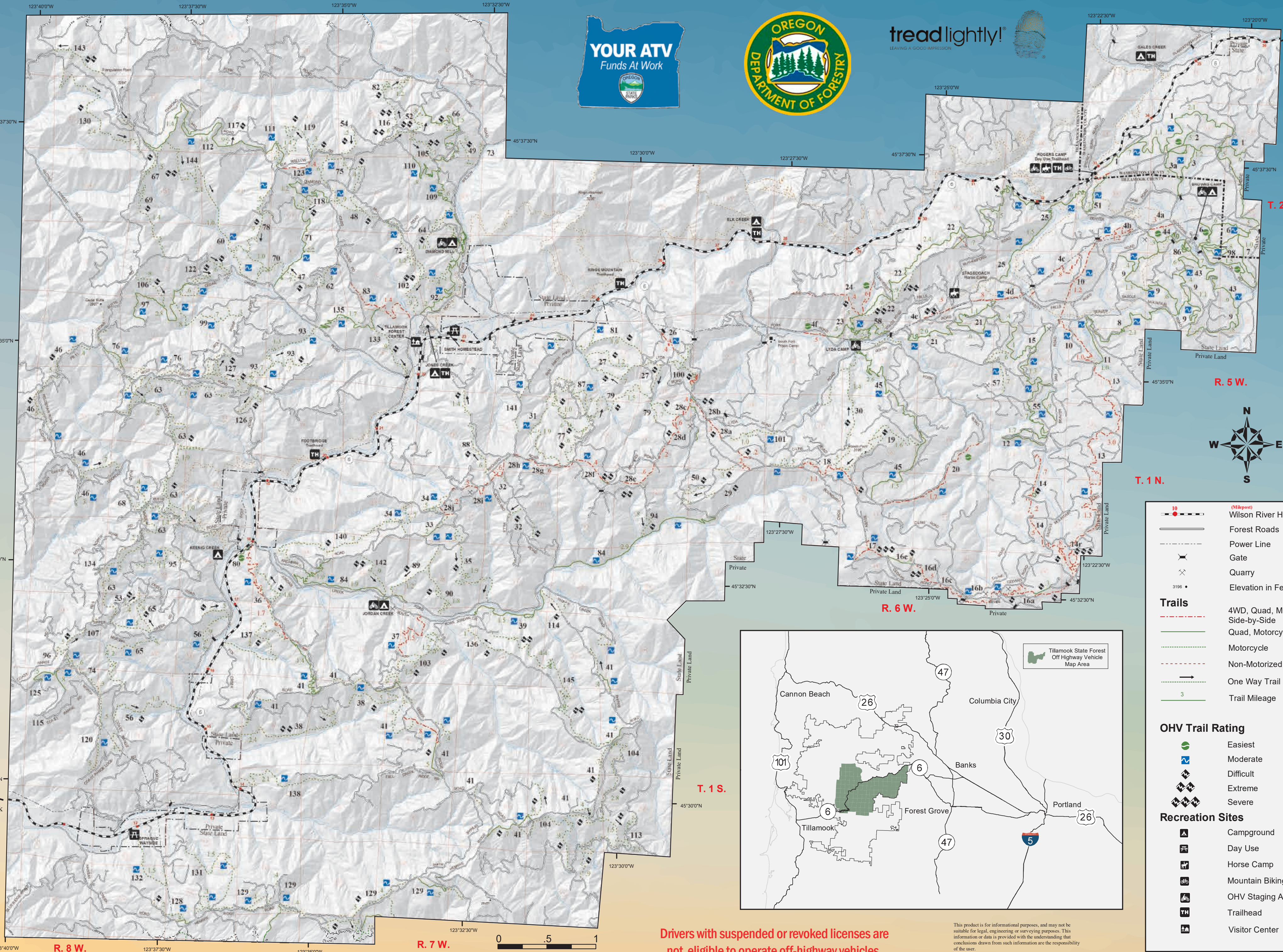
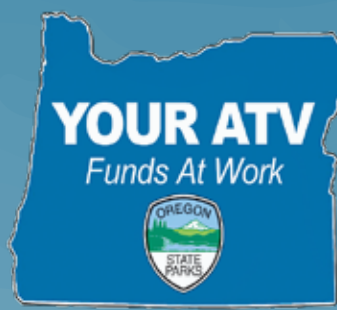


**Motorcycle, Quad, 4WD and Side-by-Side Trails**

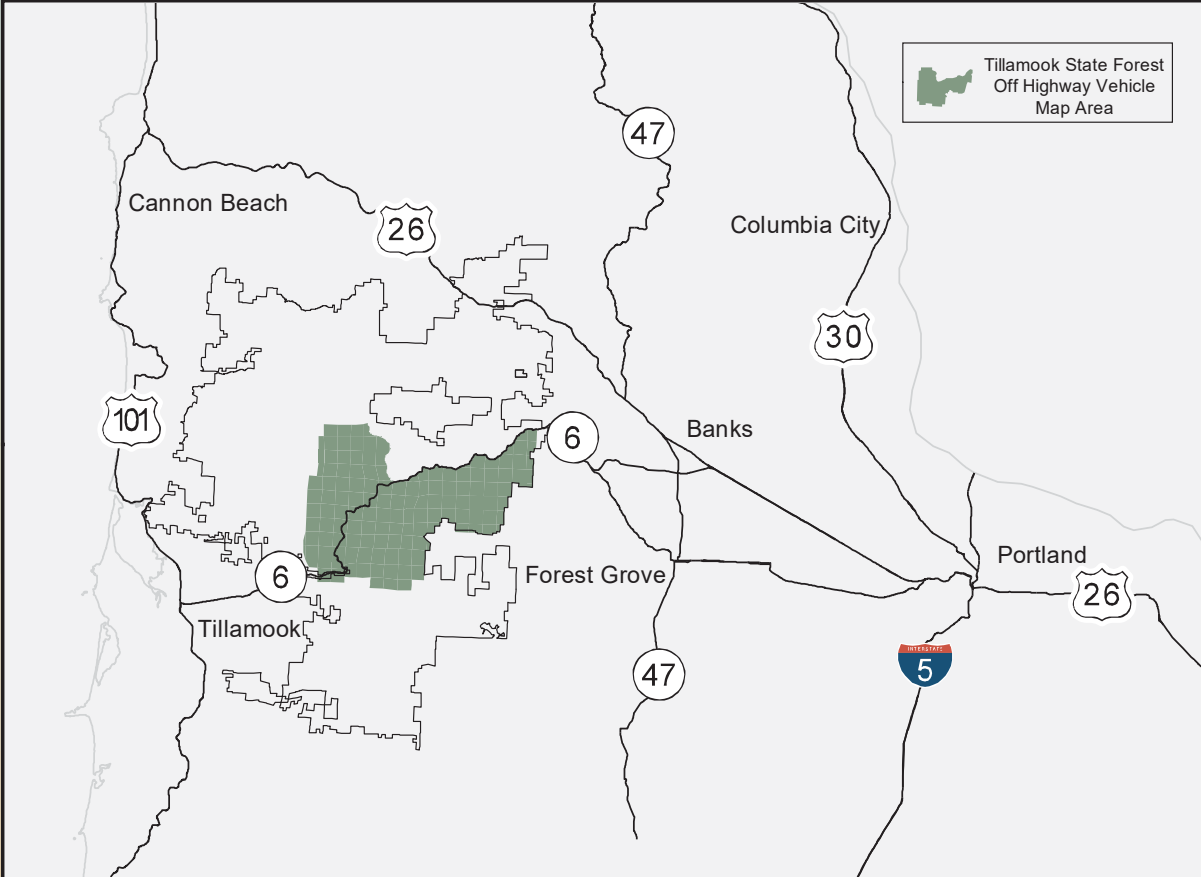
- | ID # | Name                  | Difficulty |
|------|-----------------------|------------|
| 1    | Roger's Camp Road     | Easy       |
| 2    | Firebreak One         | Easy       |
| 3    | Crooked Bridge        | Easy       |
| 3a   | Marks                 | Easy       |
| 4    | Powerline             | Easy       |
| 4b   | Happy Meal            | Easy       |
| 4c   | Little Rubicon        | Easy       |
| 5    | Blackbuster           | Easy       |
| 6    | Brown's Powerline     | Easy       |
| 7    | Clydes                | Easy       |
| 8    | Julies                | Easy       |
| 9    | Sidewinder            | Easy       |
| 10   | University Firepower  | Easy       |
| 11   | Elmers                | Easy       |
| 12   | Gummy Worm            | Easy       |
| 13   | Cedar Tree            | Easy       |
| 14   | Firebreak Five        | Easy       |
| 14r  | Crushers              | Easy       |
| 15   | Island                | Easy       |
| 16a  | Saddle Up             | Easy       |
| 16b  | Dog Leg               | Easy       |
| 16c  | Waldos Way            | Easy       |
| 16d  | Airplane Hill         | Easy       |
| 16e  | Cedar Way             | Easy       |
| 17   | 7-Up                  | Easy       |
| 18   | Hogs Back             | Easy       |
| 19   | Tomans Knob           | Easy       |
| 20   | Hoodraiser            | Easy       |
| 21   | Chute                 | Easy       |
| 22   | Back to Back          | Easy       |
| 23   | Marianna's Trench     | Easy       |
| 24   | Bates Road            | Easy       |
| 25   | Elliott Creek         | Easy       |
| 26   | Ample and Alluring    | Easy       |
| 27   | Ben Smith Loop        | Easy       |
| 28   | Archers Firebreak     | Easy       |
| 28a  | Rocky Up Hill         | Easy       |
| 28b  | Can Opener            | Easy       |
| 28c  | Waterfall             | Easy       |
| 28d  | Rock Garden           | Easy       |
| 29   | Morre's Maze          | Easy       |
| 30   | Bales Creek           | Easy       |
| 31   | Benny Hill            | Easy       |
| 32   | Endless Bummer        | Easy       |
| 33   | Chainbreaker          | Easy       |
| 34   | Buckup                | Easy       |
| 35   | Buzzards Point        | Easy       |
| 36   | Rogers Rd.            | Easy       |
| 37   | Stick In The Nose     | Easy       |
| 38   | Maddogs Pumpkin Patch | Easy       |
| 39   | Spaur Creek           | Easy       |
| 41   | Firefox               | Easy       |
| 41f  | Firefox               | Easy       |
| 43   | Military              | Easy       |
| 44   | Quarry                | Easy       |
| 45   | Log Jam               | Easy       |
| 46   | Reids Ridge           | Easy       |
| 47   | Deer Quarry           | Easy       |
| 48   | Arrowhead             | Easy       |
| 49   | Femgully              | Easy       |
| 50   | Bat Bridge            | Easy       |
| 51   | K Thumb               | Easy       |
| 52   | Beaverslide           | Easy       |
| 53   | BFR                   | Easy       |
| 54   | Black Diamond         | Easy       |
| 55   | Black Water 50        | Easy       |
| 56   | BPA                   | Easy       |
| 57   | Pink Ribbon           | Easy       |
| 58   | Stage Rd.             | Easy       |
| 60   | Bungee Rd.            | Easy       |
| 62   | Cedar Jones           | Easy       |
| 63   | Cedar Ridge           | Easy       |
| 64   | Diamond View          | Easy       |
| 65   | Coast Range           | Easy       |
| 66   | Cobmaster             | Easy       |
| 67   | Cramlets Cliff        | Easy       |
| 68   | Cut Off               | Easy       |
| 69   | DC                    | Easy       |
| 70   | Cedar Fence           | Easy       |
| 71   | Deer Fence            | Easy       |
| 72   | Odins Ridge           | Easy       |
| 73   | West Fork Bypass      | Easy       |
| 74   | East Tower            | Easy       |
| 75   | Elk Wallow            | Easy       |
| 76   | Frankenstien          | Easy       |
| 77   | Payne                 | Easy       |
| 78   | Ginger                | Easy       |
| 79   | Dragons Tooth         | Easy       |
| 80   | Highway Access        | Easy       |
| 81   | Pigtrack              | Easy       |
| 82   | MC                    | Easy       |
| 83   | Jones Creek Rd.       | Easy       |
| 84   | Jordan Creek          | Easy       |
| 86   | Kids Loop             | Easy       |
| 87   | Denny's               | Easy       |
| 88   | Parking Lot West      | Easy       |
| 89   | Katie's               | Easy       |
| 90   | Marvelous Mainline    | Easy       |
| 92   | Miles                 | Easy       |
| 93   | Mongos Canyon         | Easy       |
| 94   | Doughboy Meets Dirt   | Easy       |
| 95   | Muesial Creek         | Easy       |
| 96   | North Tower           | Easy       |
| 97   | Old Cedar Creek       | Easy       |
| 98   | One Way               | Easy       |
| 99   | Outback               | Easy       |
| 100  | Lyda Hill             | Easy       |
| 101  | Lyda Split            | Easy       |
| 102  | Salans Slide          | Easy       |
| 103  | Purple Bug Stump      | Easy       |
| 104  | Radio Silence         | Easy       |
| 105  | Pine Tree             | Easy       |
| 106  | Cedar Hump            | Easy       |
| 107  | Relay Ridge           | Easy       |
| 108  | Rickety Bridge        | Easy       |
| 109  | Wait n Gene's         | Easy       |
| 110  | Plastic Downhill      | Easy       |
| 111  | Tri Loop              | Easy       |
| 112  | Diamond Mill Ridge    | Easy       |
| 113  | Schwarz's             | Easy       |
| 114  | Skidmark              | Easy       |
| 115  | South Tower           | Easy       |
| 116  | Spiny Ridge           | Easy       |
| 117  | Sticks and Stones     | Easy       |
| 118  | Stumpy                | Easy       |
| 119  | Summit                | Easy       |
| 120  | The Continental       | Easy       |
| 121  | Thin Wolf             | Easy       |
| 122  | Tommy                 | Easy       |
| 123  | Truck Dent            | Easy       |
| 125  | West Tower            | Easy       |
| 126  | Wolf Foot             | Easy       |
| 127  | Wolf Point            | Easy       |
| 128  | Potato Ridge          | Easy       |
| 129  | Hembre Ridge          | Easy       |
| 130  | Barney Rubble         | Easy       |
| 131  | Fawn Holly            | Easy       |
| 132  | Kansas Creek          | Easy       |
| 133  | Powerline 2           | Easy       |
| 134  | Muesial Ridge         | Easy       |
| 135  | Cedar Creek Bypass    | Easy       |
| 136  | Spaur Ridge           | Easy       |
| 137  | Rogers Fox            | Easy       |
| 138  | Yellow Post           | Easy       |
| 140  | Angry Elf             | Easy       |
| 141  | Parking Lot East      | Easy       |
| 142  | The Drop              | Easy       |
| 143  | Alpina                | Easy       |
| 144  | Bungee Jump           | Easy       |
| 145  | Duanes                | Easy       |

# Tillamook State Forest Off-Highway Vehicle Trail Map

Portland  
36 Miles



- 10 Wilson River HWY
  - Forest Roads
  - Power Line
  - Gate
  - Quarry
  - Elevation in Feet
- Trails**
- 4WD, Quad, Motorcycle, Side-by-Side
  - Quad, Motorcycle
  - Motorcycle
  - Non-Motorized
  - One Way Trail
  - Trail Mileage
- OHV Trail Rating**
- Easiest
  - Moderate
  - Difficult
  - Severe
- Recreation Sites**
- Campground
  - Day Use
  - Horse Camp
  - Mountain Biking
  - OHV Staging Area
  - Trailhead
  - Visitor Center



**Drivers with suspended or revoked licenses are not eligible to operate off-highway vehicles.**

This product is for informational purposes, and may not be suitable for legal, engineering or surveying purposes. This information or data is provided with the understanding that conclusions drawn from such information are the responsibility of the user.

Downloadable versions of this map can be found online at [www.oregon.gov/ODF/Recreation/pages/MotorizedTrails.aspx](http://www.oregon.gov/ODF/Recreation/pages/MotorizedTrails.aspx)

Scale 1:46,500

Miles

R. 8 W.

R. 7 W.

R. 6 W.

R. 5 W.

T. 2 N.

T. 1 N.

T. 1 S.

- 138 Yellow Post
- 140 Angry Elf
- 141 Parking Lot East
- 142 The Drop
- 143 Alpina
- 144 Bungee Jump
- 145 Duanes