

Presentation to the
2019 Joint Ways and Means Subcommittee on Human Services

CHILD WELFARE PROGRAM

Marilyn Jones
Child Welfare Director

February 20, 2019



Presentation Outline

Day 1

- **Child Welfare Program vision & keys to success**
- **Overview of services**
- **Priorities**

Day 2

- Practice improvements
- Funding investments
- Budget overview
- Key Performance Measures
- Fundamental processes

Our Vision

Every child and family has a safe and positive environment in which to live and develop.



Keys to Success

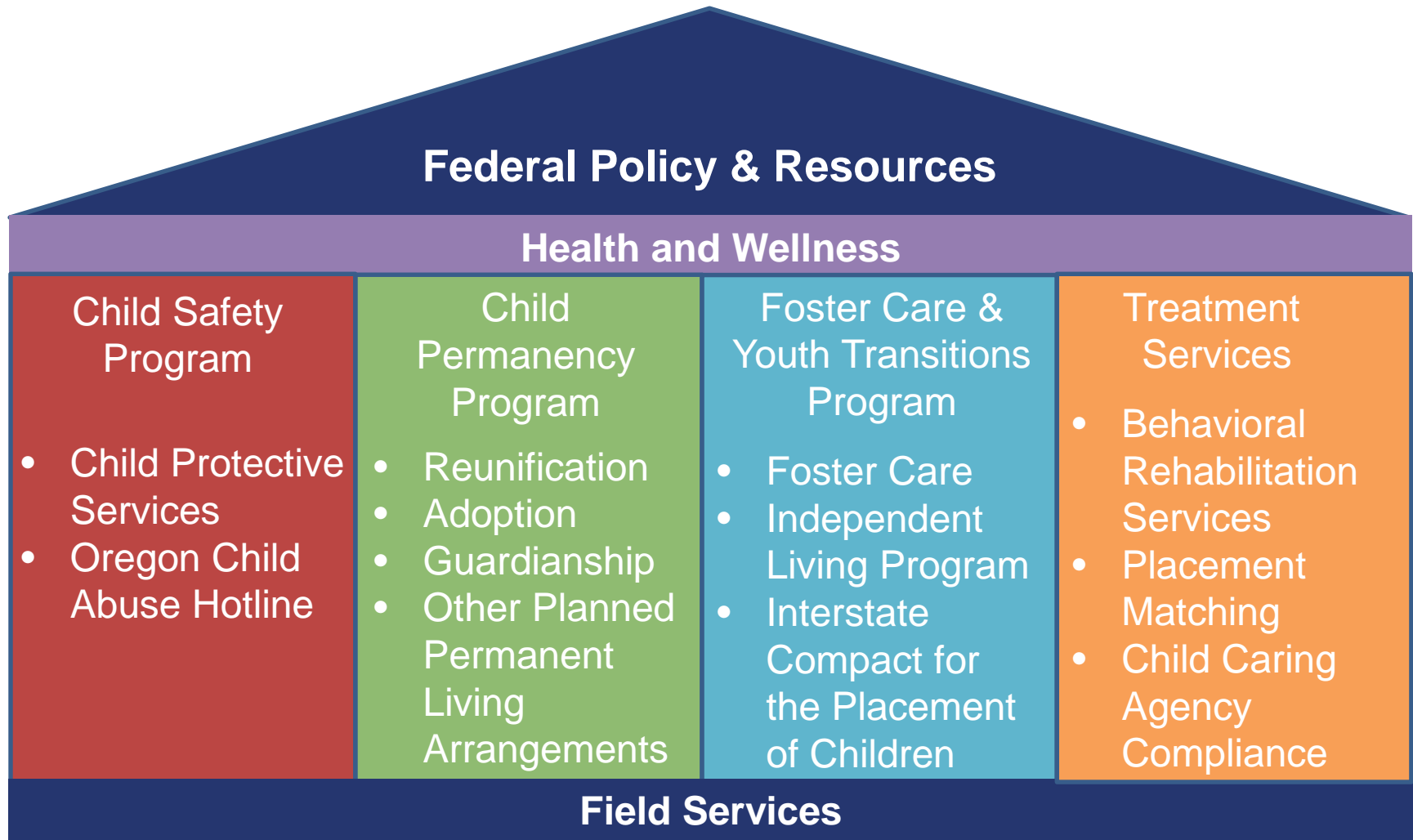
**Child-centered
focus**

Partnerships

**Leading to
excellence**

**Professional
discretion & data-
informed decision**

Overview of Services

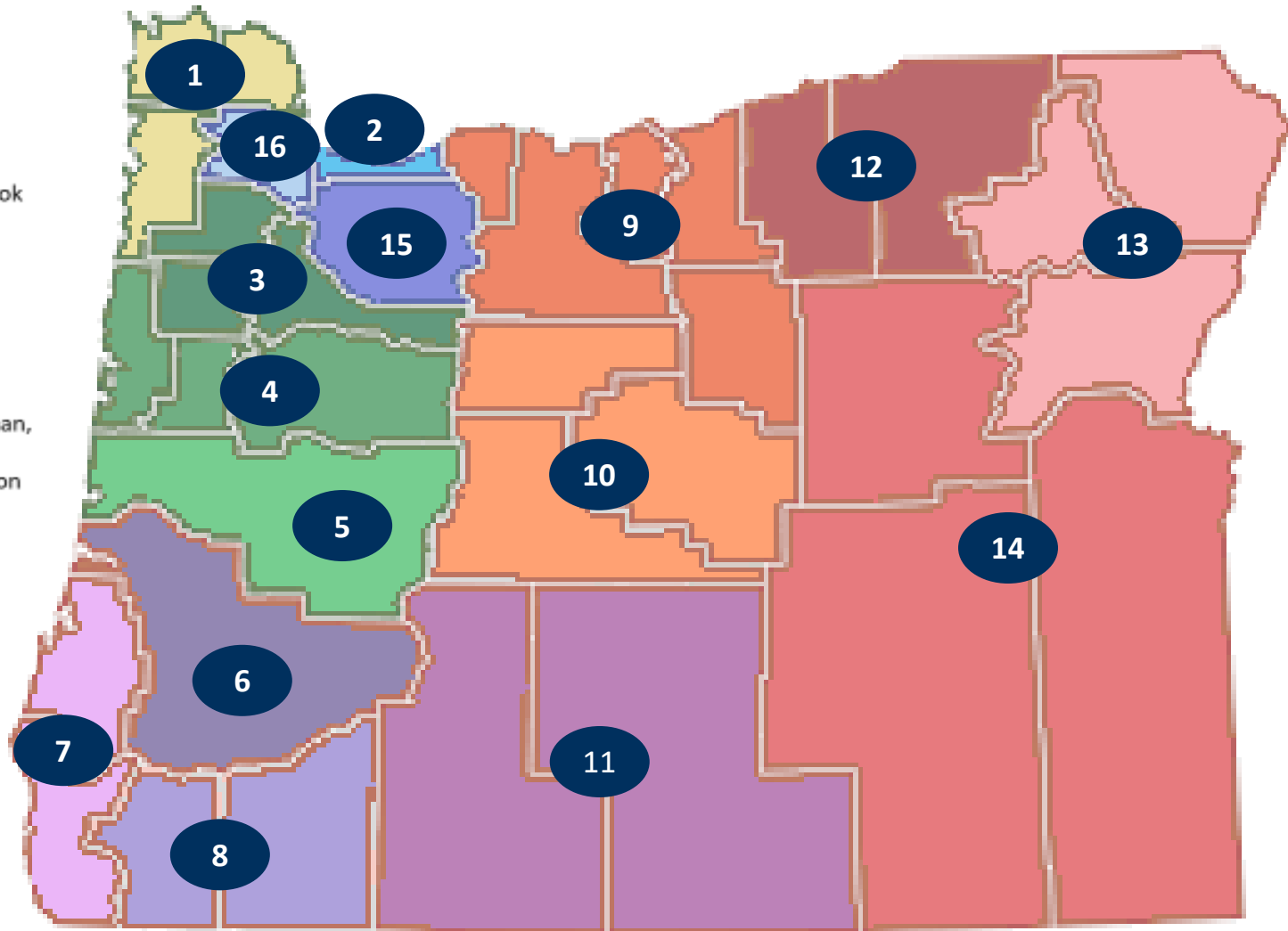


CHILD WELFARE PROGRAM

Districts We Serve

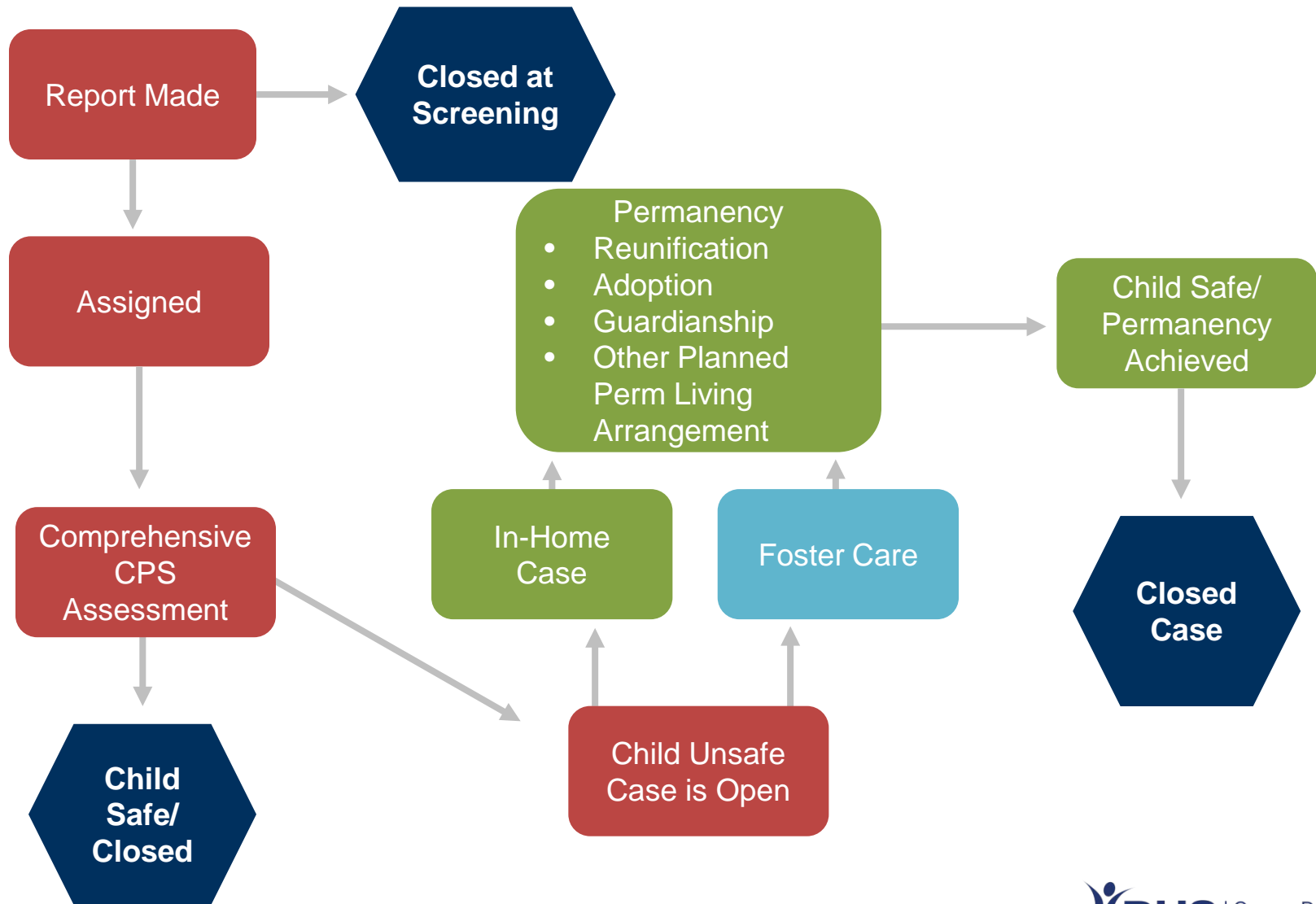
List of Districts

- D1 – Clatsop, Columbia, Tillamook
- D2 – Multnomah
- D3 – Marion, Polk, Yamhill
- D4 – Benton, Lincoln, Linn
- D5 – Lane
- D6 – Douglas
- D7 – Coos, Curry
- D8 – Jackson, Josephine
- D9 – Gilliam, Hood River, Sherman, Wasco, Wheeler
- D10 – Crook, Deschutes, Jefferson
- D11 – Klamath, Lake
- D12 – Morrow, Umatilla
- D13 – Baker, Union, Wallowa
- D14 – Grant, Harney, Malheur
- D15 – Clackamas
- D16 – Washington



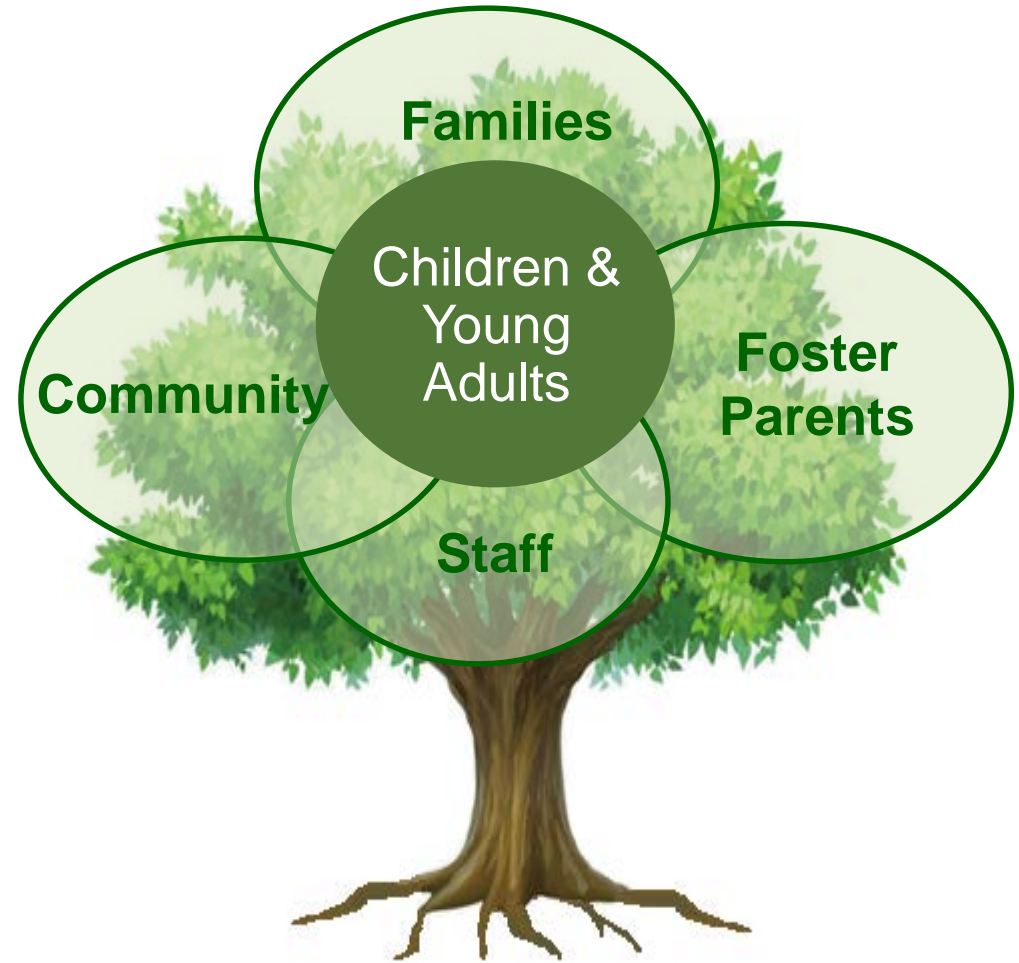
CHILD WELFARE PROGRAM

Case Flow



Priorities

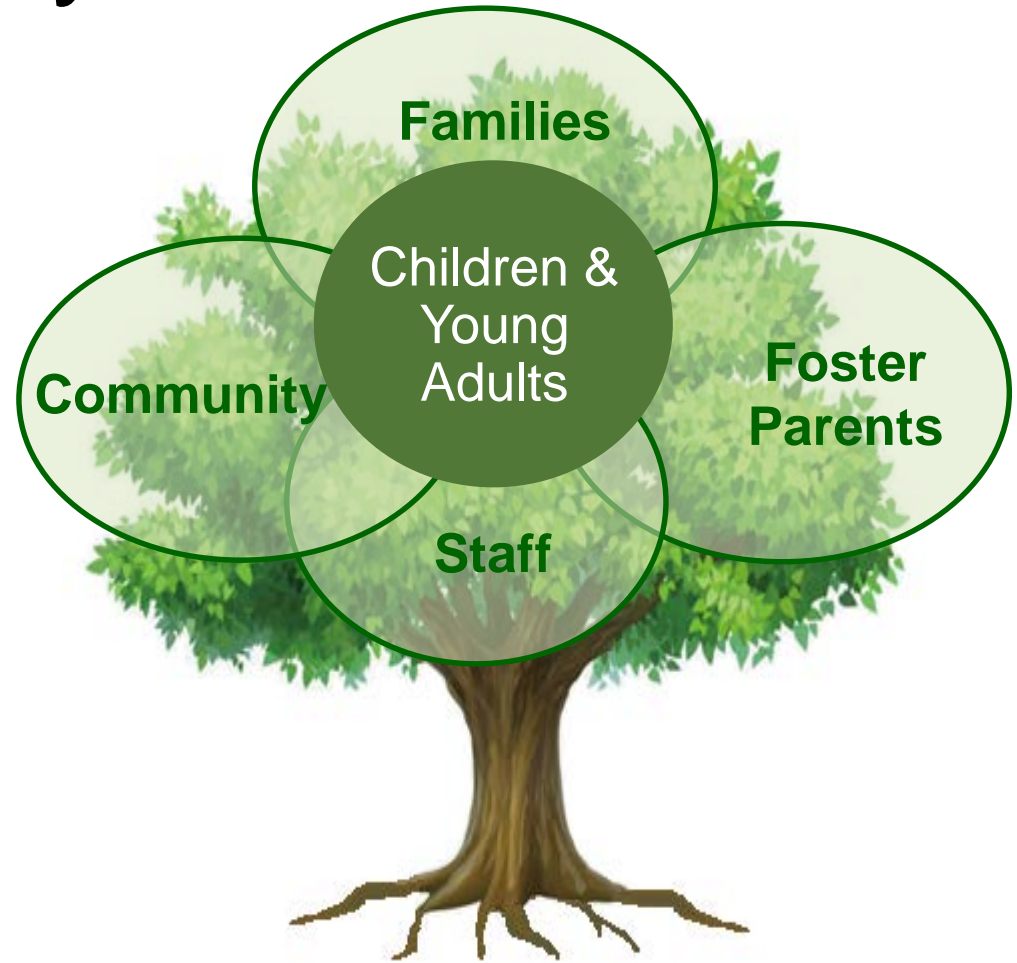
- Safety
- Children & young adults
- Families
- Foster parents
- Tribes
- Community partners
- Staff



Rooted in Safety

Rooted in Safety

Safety and well-being
are the foundation
of our work.



Rooted in Safety

Children & Young Adults

Child-centered Focus



CHILD WELFARE PROGRAM

Families

Striving to Keep Families Together

- Managing safety
- Provide in-home services



Families

Helping Families Heal

- Provide support services
- Family transition planning
- Child permanency



Foster Parents

Helping Children Thrive

- Preserve family relationships
- Promote child well-being



Foster Parents

Investments in Foster Parents

- Retain
- Recruit
- Support



Beyond Foster Care

Treatment Services

- Appropriate placement to meet the child's needs
- System collaboration



Treatment Services

Current Availability of Care

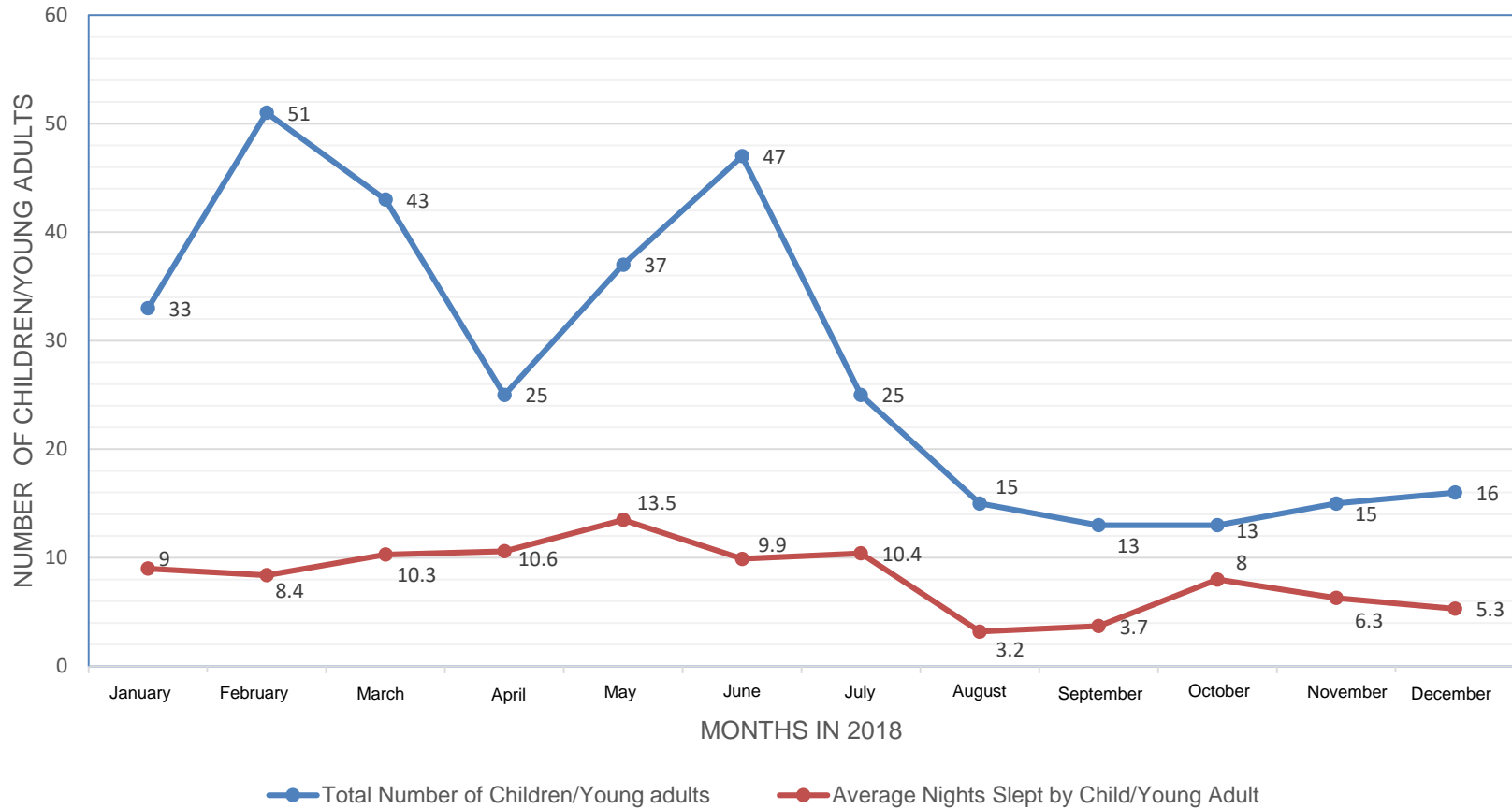


16 Behavioral
Rehabilitation
Services (BRS)
Residential Facilities
within 12 Child
Caring Agencies

181 Beds

Temporary Lodging

Number of Children/Young Adults in Temporary Lodging by Monthly Count - 2018



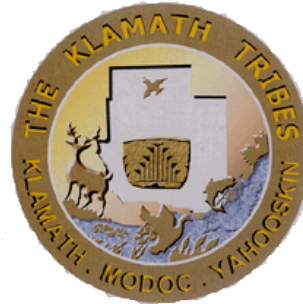
CHILD WELFARE PROGRAM

Building Relationships



CHILD WELFARE PROGRAM

Tribal Nations



CHILD WELFARE PROGRAM

Community



**Boys &
Girls Aid**



**Oregon
Foster Youth**
CONNECTION



CASA
Court Appointed Special Advocates
FOR CHILDREN
THE NATIONAL COURT APPOINTED
SPECIAL ADVOCATE ASSOCIATION



**BOYS & GIRLS CLUBS
OF AMERICA**



**FOR YOUTH DEVELOPMENT®
FOR HEALTHY LIVING
FOR SOCIAL RESPONSIBILITY**

**Liberty
House**



morrison
child & family services

CHILD WELFARE PROGRAM

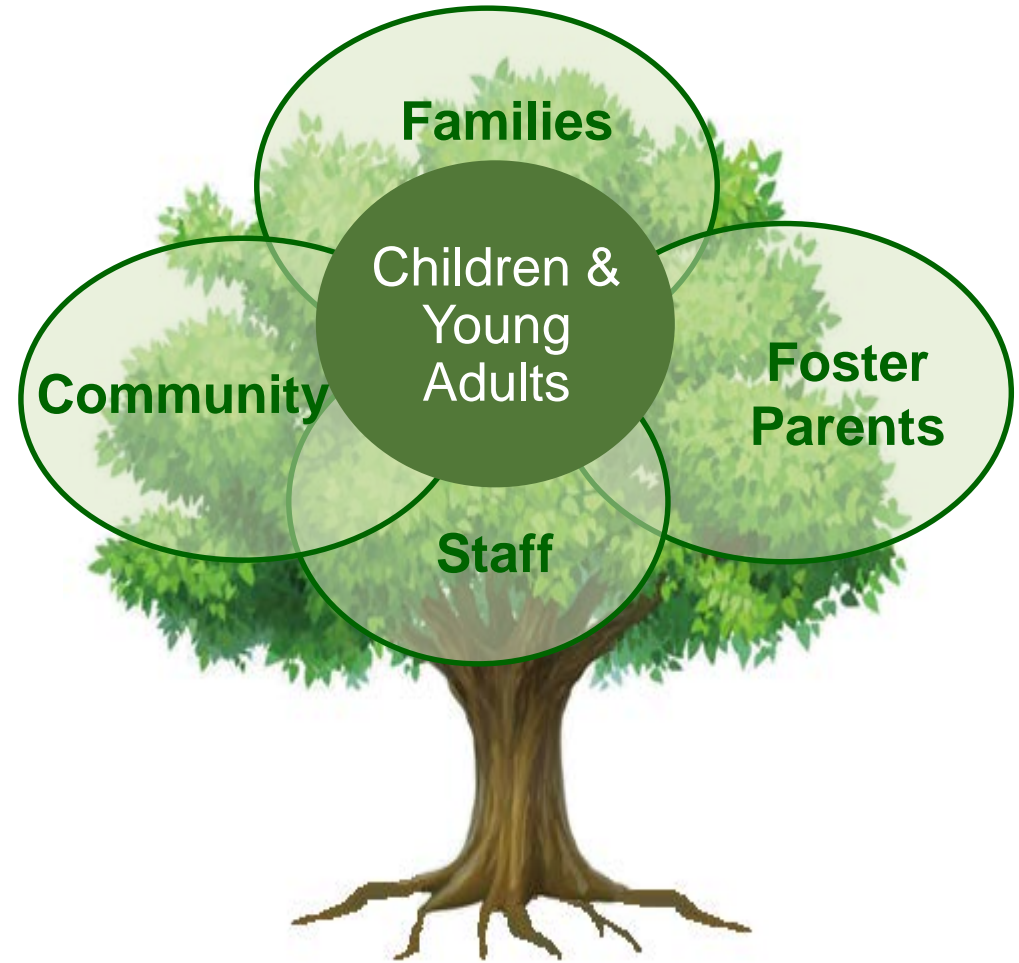
Staff: Our most important asset

- Workload
- Retention
- Support



Looking Forward

- Safety
- Engagement
- Opportunities



Rooted in Safety

Questions?



www.oregon.gov/dhs

Presentation to the
2019 Joint Ways and Means Subcommittee on Human Services

CHILD WELFARE PROGRAM

Marilyn Jones
Child Welfare Director

February 21, 2019



Presentation Outline

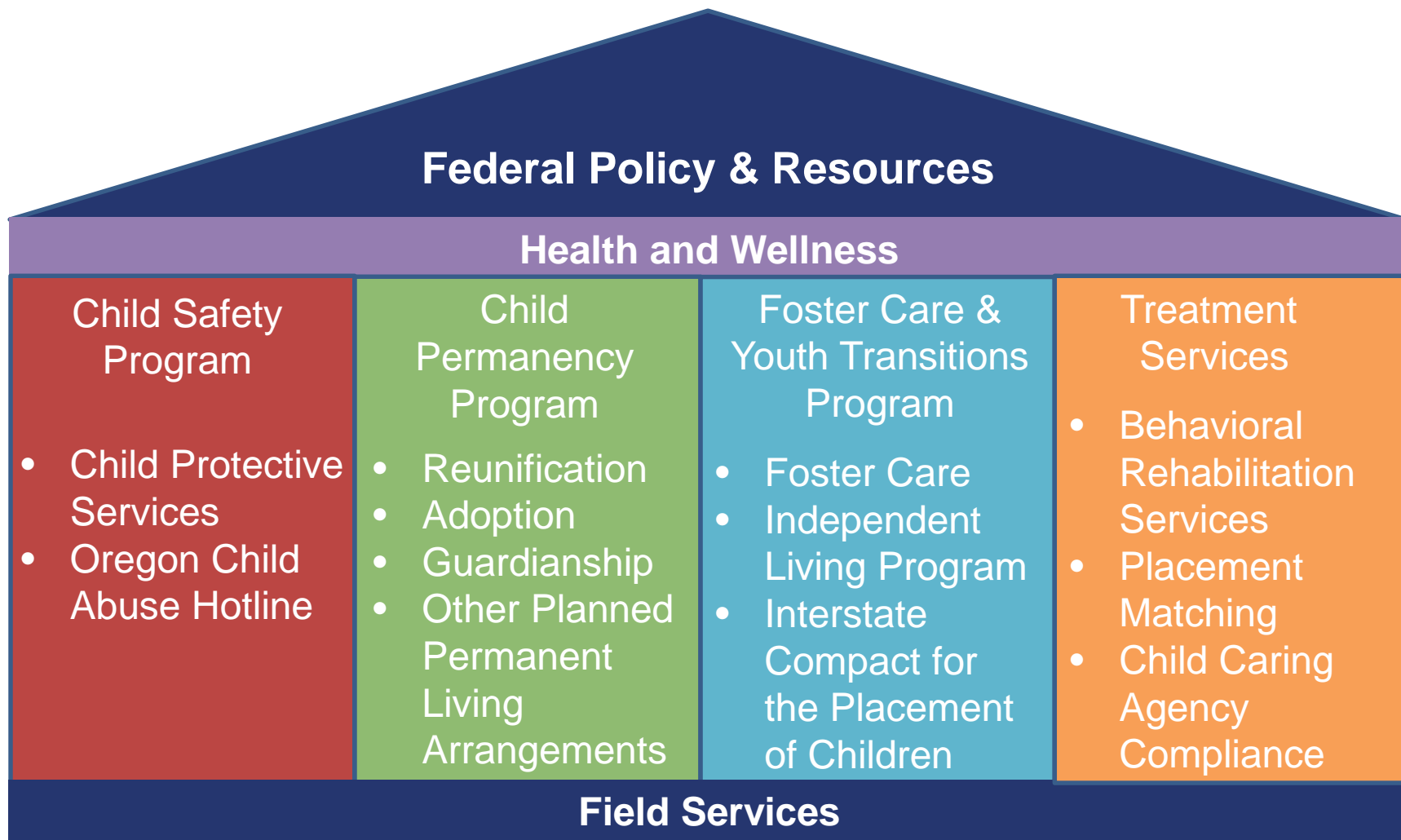
Day 1

- Child Welfare Program vision & keys to success
- Overview of services
- Priorities

Day 2

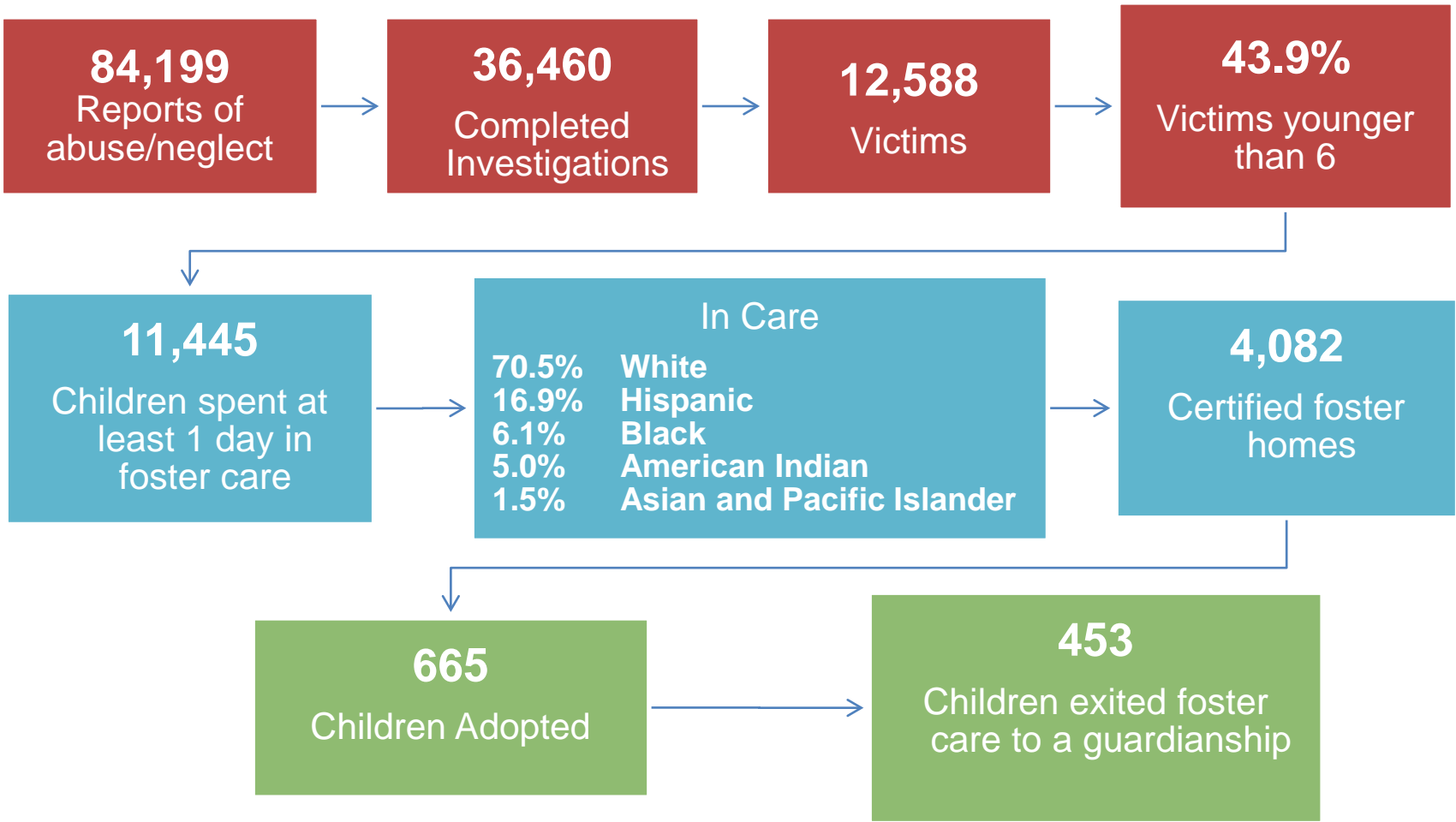
- **Practice improvements**
- **Funding investments**
- **Budget overview**
- **Key Performance Measures**
- **Fundamental processes**

Overview of Services



CHILD WELFARE PROGRAM

Who We Serve



CHILD WELFARE PROGRAM

Practice Improvements

- Overdue Assessment Project
- Trauma Informed Care Initiative
- Clinical Supervision
- Nursing Program Enhancements



Governor's Budget Funding Investments

- Independent Living Program
- Visitation Pilot
- Foster Family Recruitment Team
- Continuing Education for Foster Parents
- KEEP Program



Children and Young Adults

Foster Care & Youth Transitions Program

- Independent Living Program to increase monthly service rates and expand services to youth 14-15 and 21-23 years old
- Young Adult Transitions Navigator
- Healthy Relationships Program



Families

Family-Focused Services



Visitation Pilot

CHILD WELFARE PROGRAM

Foster Parents

Practice Improvements

- New funding for continuing education for caregiver training
- KEEP Program
- Foster Family Retention and Recruitment Team

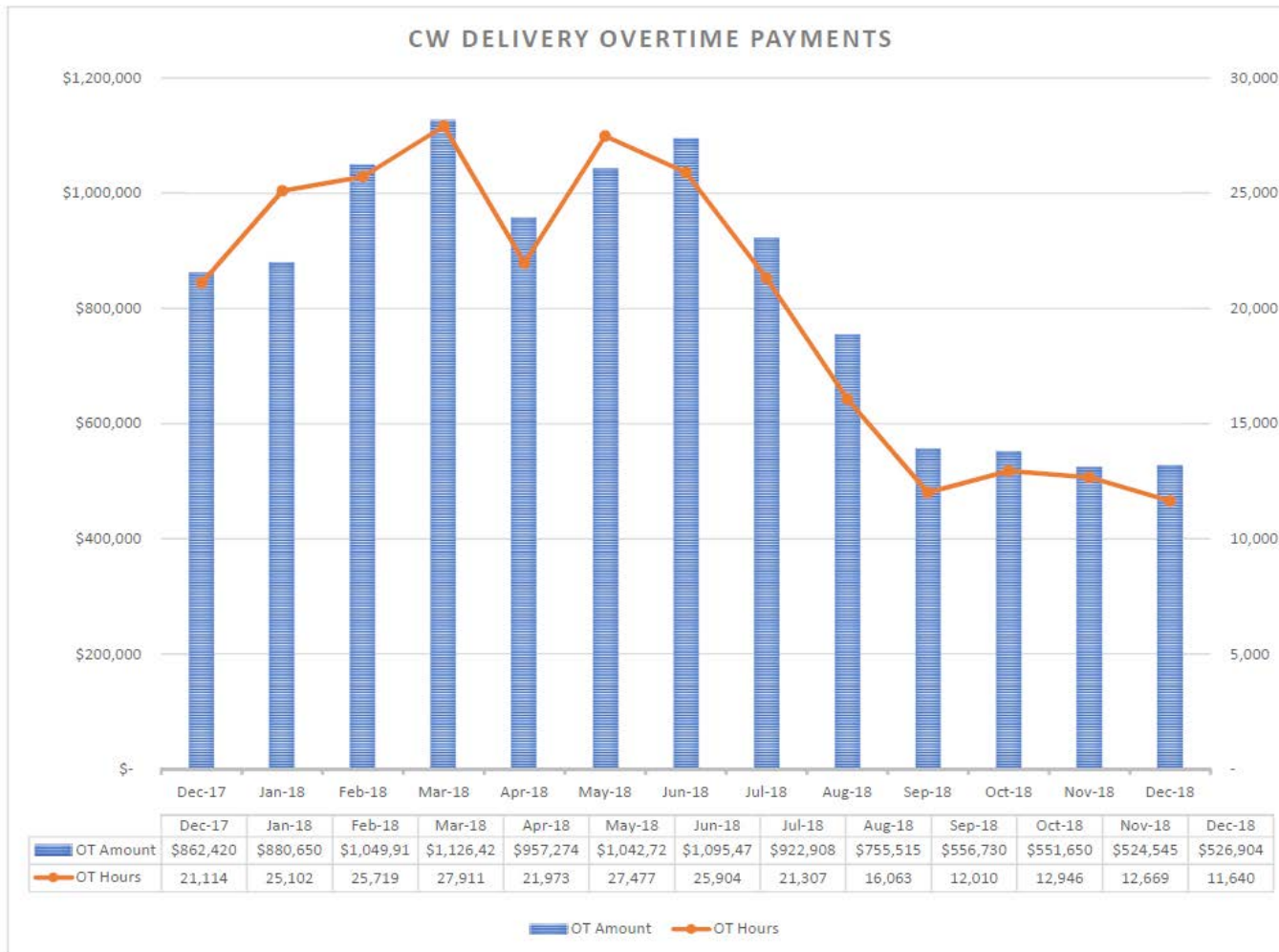


Staff

- Position allocations
- Oregon Child Abuse Hotline
- Legal Representation
- Advanced training for staff

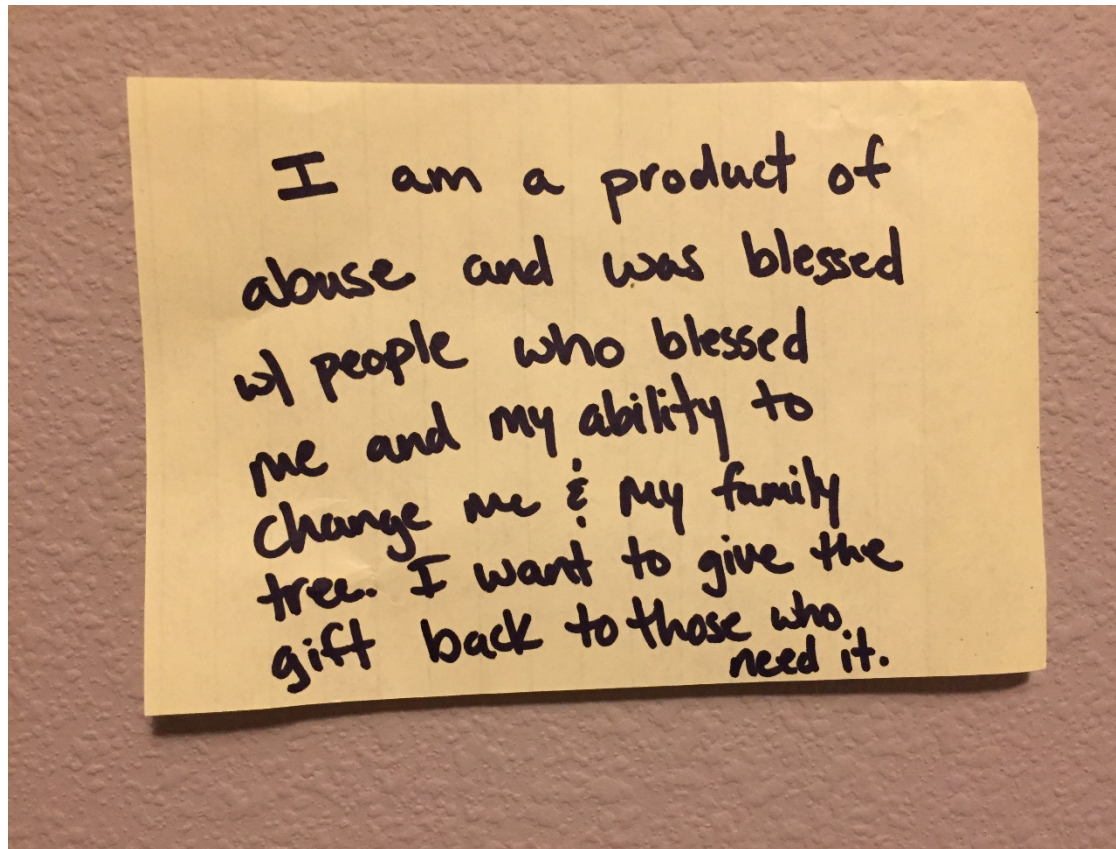


Over Time



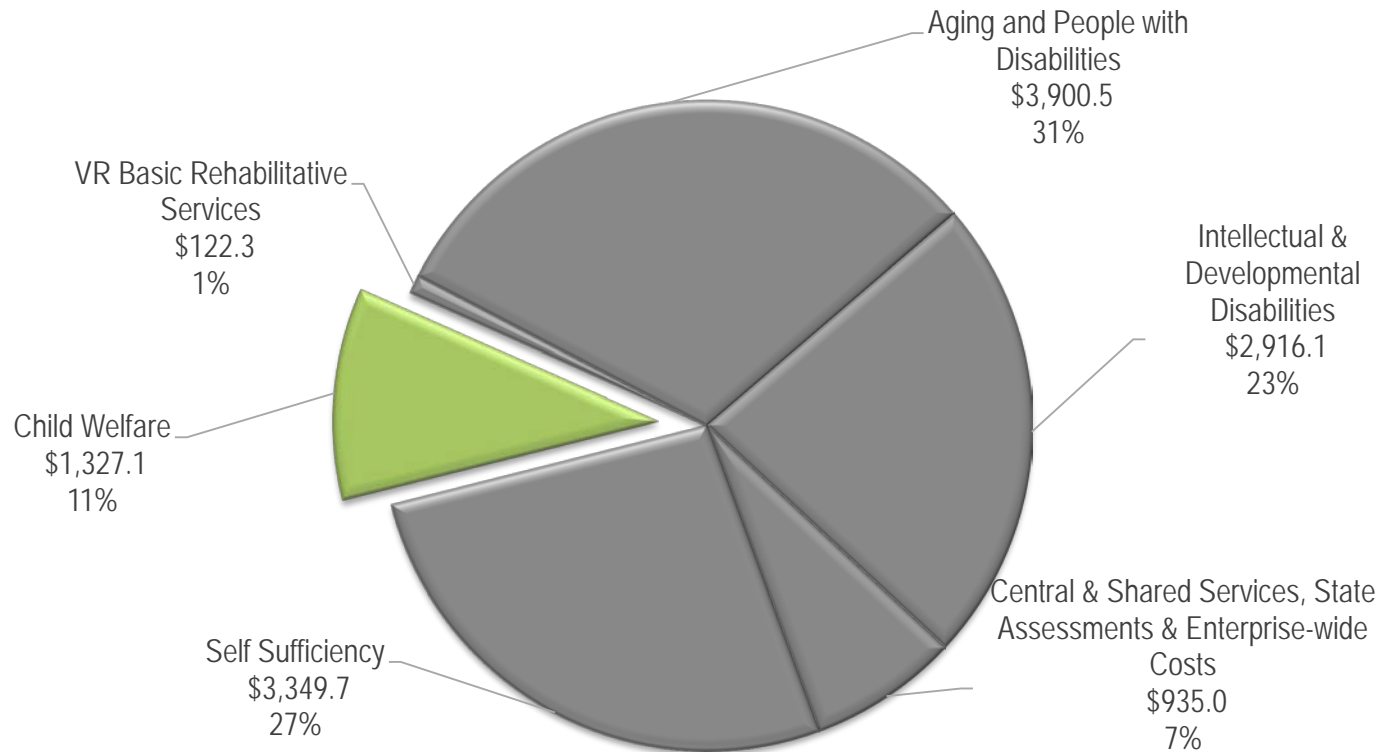
CHILD WELFARE PROGRAM

What We Need To Do This Work



I am a product of
abuse and was blessed
w/ people who blessed
me and my ability to
change me & my family
tree. I want to give the
gift back to those who
need it.

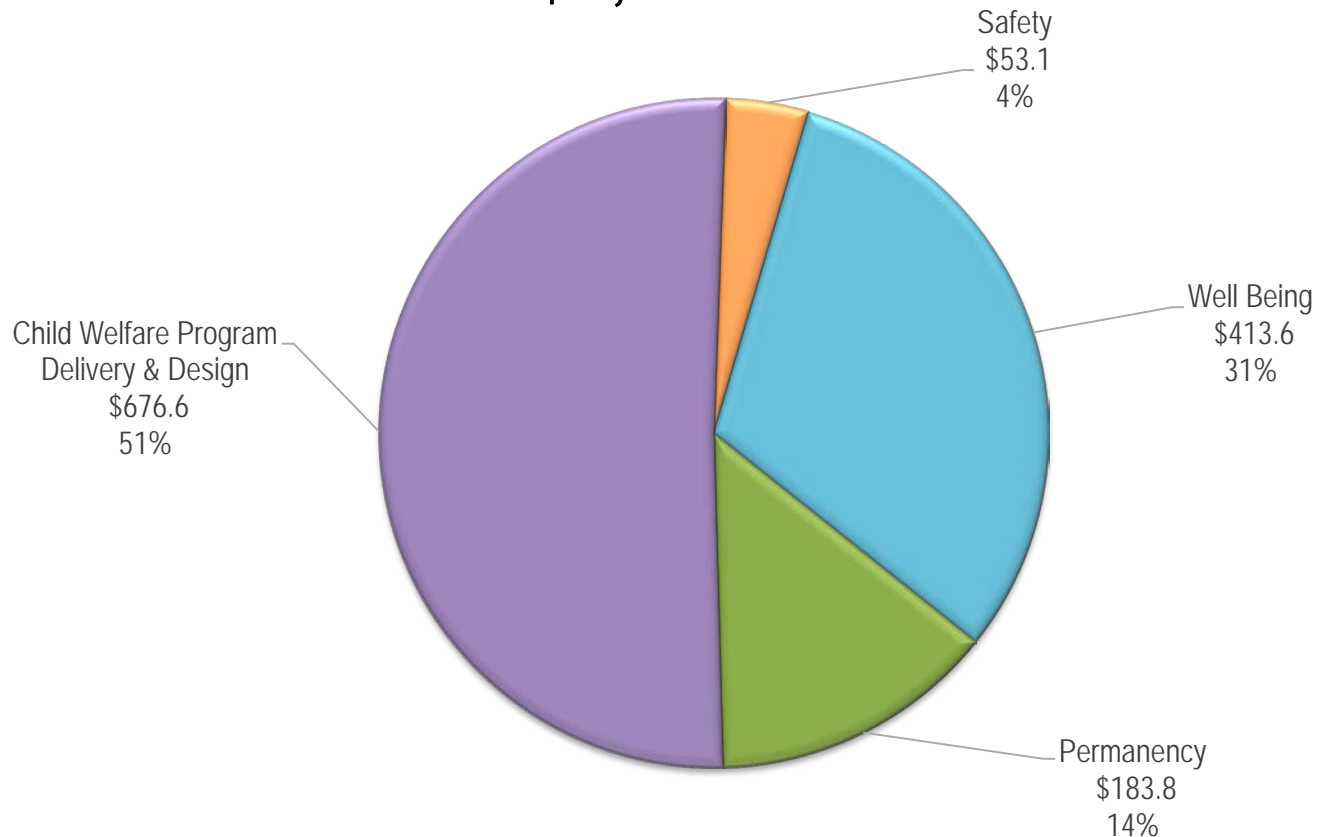
Department of Human Services 2019-21 Governor's Budget Total Fund by Program Area \$ 12,550.7 million



CHILD WELFARE PROGRAM

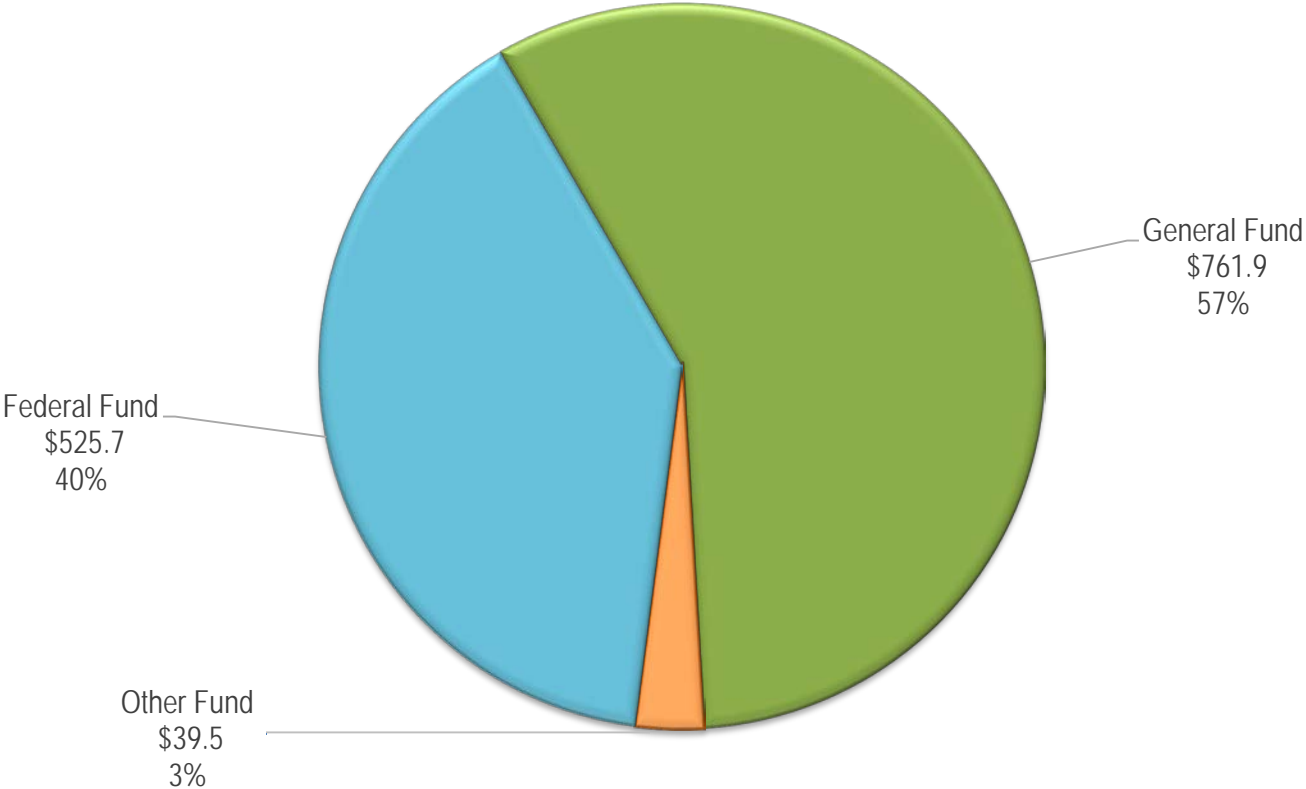
The Business Factor

Child Welfare Total Fund by Program Area \$ 1,327.1 million

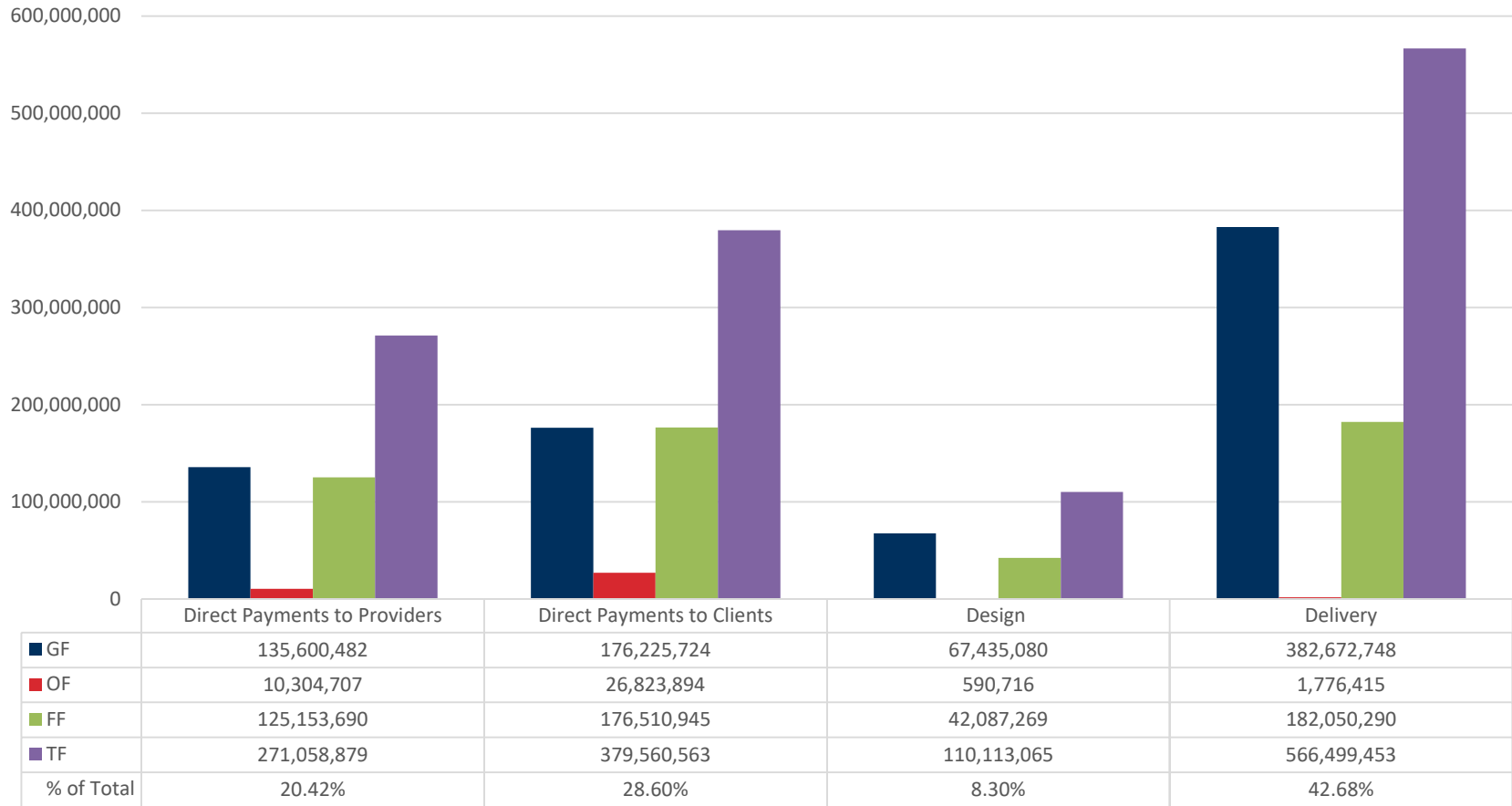


CHILD WELFARE PROGRAM

Child Welfare Total by Fund Type \$ 1,327.1 million



DHS Child Welfare Direct Payments and Services 2017-19 GB



Note: 91.7% of budget is direct services (Delivery) or direct payments to clients or providers

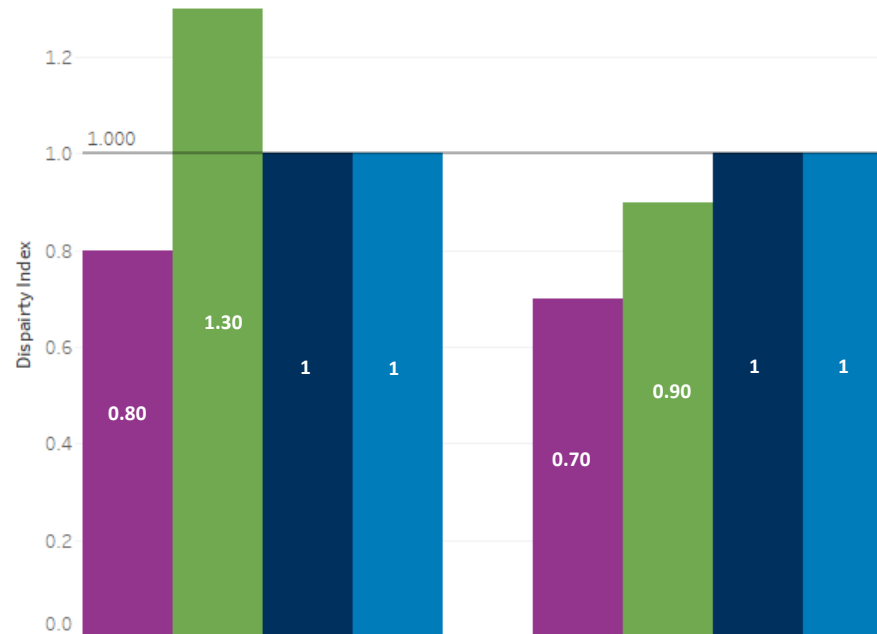
CHILD WELFARE PROGRAM

Key Performance Measures

Measure	2014 Actual	2015 Actual	2016 Actual	2017 Actual	2018 Actual	Target
KPM # 7 - Absence of repeat maltreatment	95.5%	95.0%	94.6%	93.9%	92.0%	96.0%
KPM #8 - Timely reunification	66.0%	62.9%	66.1%	73.7%	71.6%	75.0%
KPM #9 - Timeliness of adoption once legally free	42.6%	44.3%	46.1%	48.5%	42.1%	53.7%
KPM #19 - Children served by Child Welfare residing in parental home	25.8%	25.2%	23.9%	25.4%	23.8%	33%
KPM #18 - Service equity	New measurements					

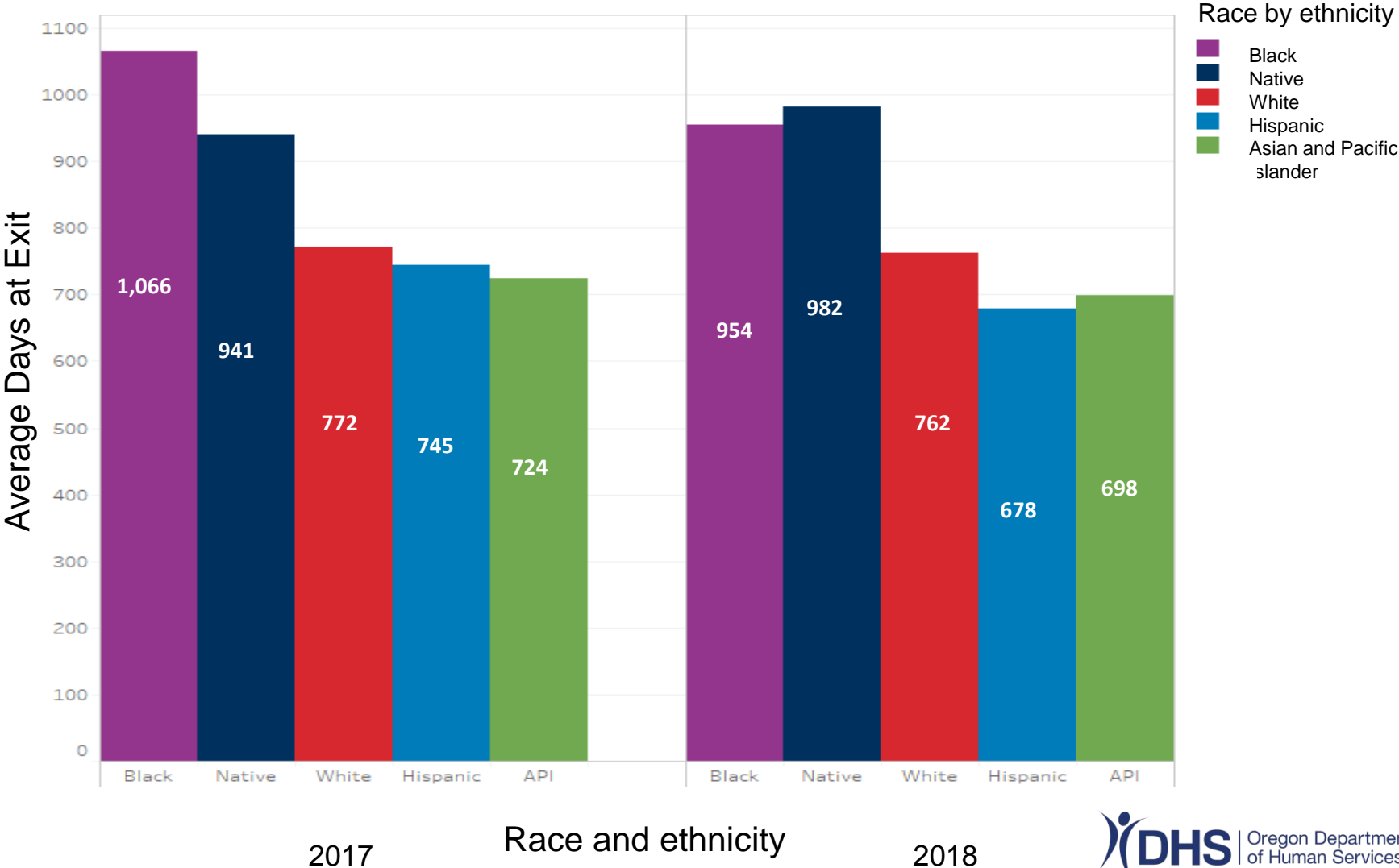
KPM #18- Service Equity

Disparity in foster youth achieving permanency within 2 years by race/ethnicity



	2017	2018
Non-Hispanic African American	0.80	0.70
Non-Hispanic Asian and Pacific Islander	1.30	0.90
Non-Hispanic Native American/Alaskan Native	1	1
Hispanic (all races)	1	1
Suggested Target	1	1

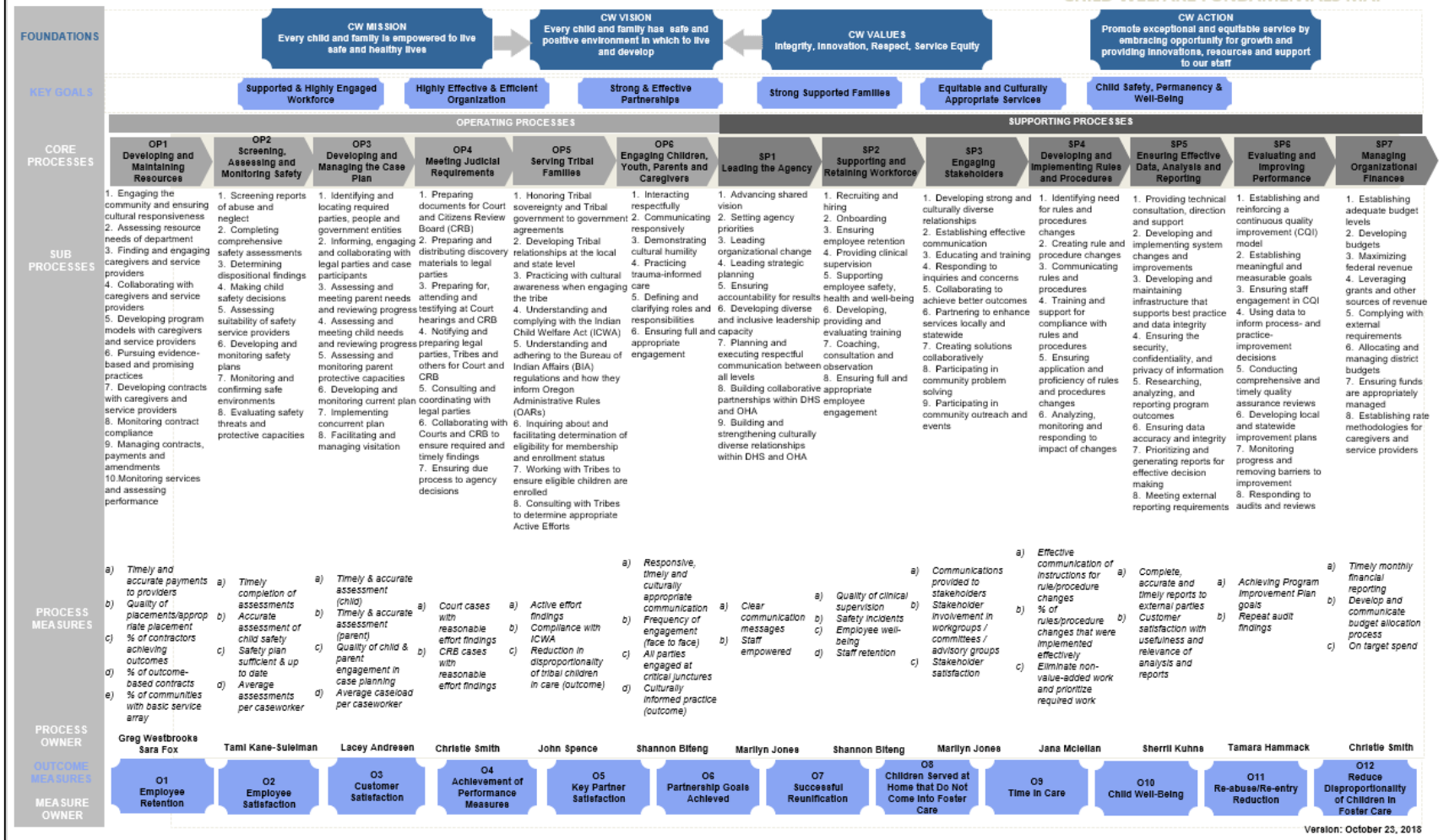
Average days in care at exit by race and ethnicity



Child Welfare Fundamentals Map

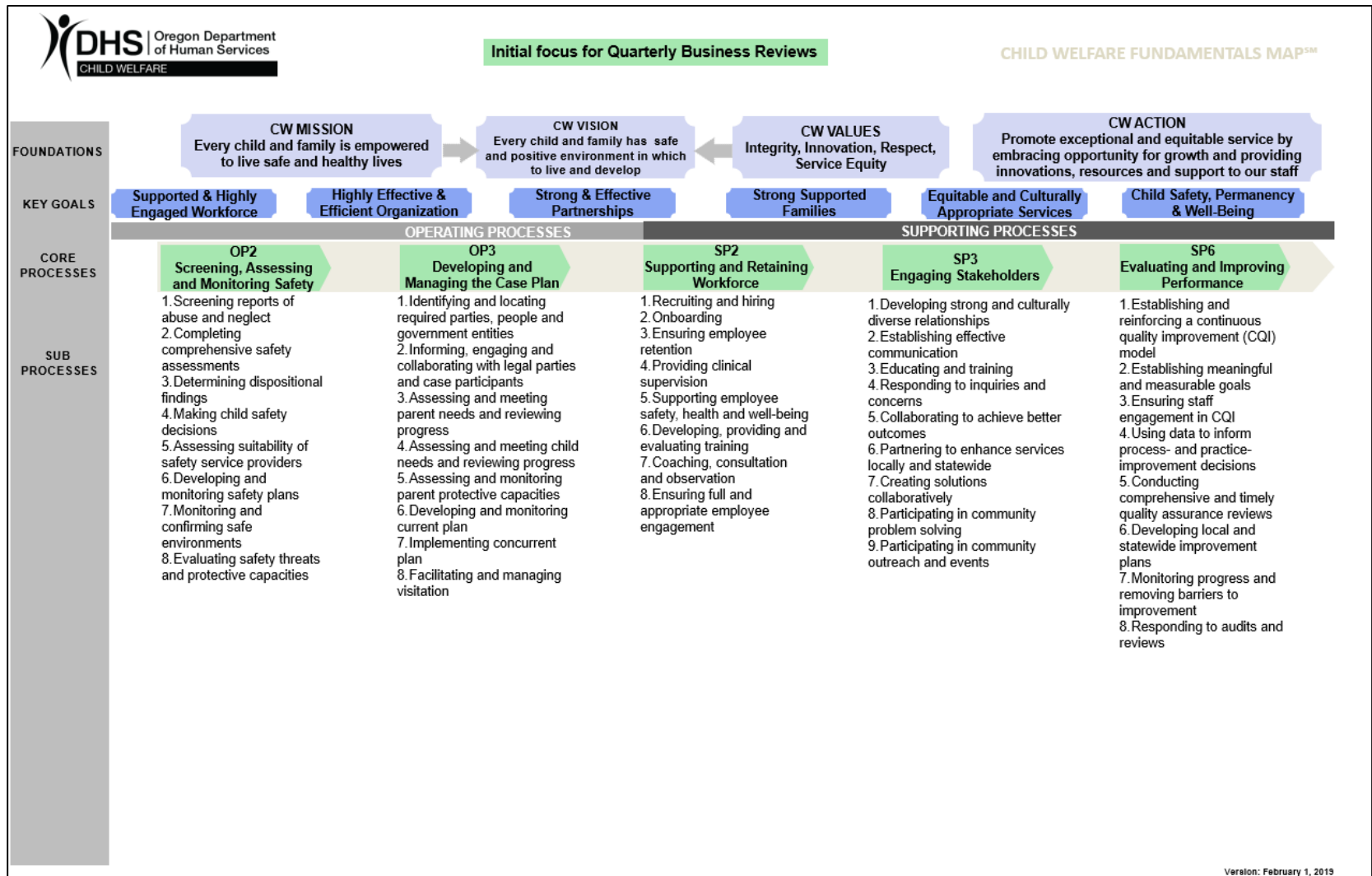


CHILD WELFARE FUNDAMENTALS MAP™



Version: October 23, 2018

Child Welfare Fundamentals Map



CHILD WELFARE PROGRAM

Fundamental Processes

Operating Process 2 Screening, Assessing and Monitoring Safety

1. Screening reports of abuse and neglect
2. Completing comprehensive safety assessments
3. Determining dispositional findings
4. Making child safety decisions
5. Assessing suitability of safety service providers
6. Developing and monitoring and confirming safe environments
7. Monitoring and confirming safe environments
8. Evaluating safety threats and protective capacities

Fundamental Processes

Operating Process 3 Developing and Managing the Case Plan

1. Identifying and locating required parties, people and government entities
2. Informing, engaging and collaborating with legal parties and case participants
3. Assessing and meeting parent needs and reviewing process
4. Assessing and meeting child needs and review process
5. Assessing and monitoring parent protective capacities
6. Developing and monitoring current plan
7. Implementing concurrent plan
8. Facilitating and managing visitation

Fundamental Processes

Supporting Process 2 Supporting and Retaining Workforce

1. Recruiting and hiring
2. Onboarding
3. Ensuring employee retention
4. Providing clinical supervision
5. Supporting employee safety, health and well-being
6. Developing, providing and evaluating training
7. Coaching, consultation and observation
8. Ensuring full and appropriate employee engagement

Fundamental Processes

Supporting Process 3 Engaging Stakeholders

1. Developing strong and culturally diverse relationships
2. Establishing effective communication
3. Educating and training
4. Responding to inquiries and concerns
5. Collaborating to achieve better outcomes
6. Partnering to enhance services locally and statewide
7. Creating solutions collaboratively
8. Participating in community problem-solving
9. Participating in community outreach and events

Fundamental Processes

Supporting Process 6 Evaluating and Improving Performances

1. Establishing and reinforcing a continuous quality improvement (CQI) model
2. Establishing meaningful and measurable goals
3. Ensuring staff engagement in CQI
4. Using data to inform process and practice improvement decisions
5. Conducting comprehensive and timely quality assurance reviews
6. Developing local and statewide improvement plans
7. Monitoring progress and removing barriers to improvement
8. Responding to audits and reviews

Moving to Excellence



CHILD WELFARE PROGRAM

Thank you

Coming up next:

- Central Services/SAEC: February 25, 2019
- Public Testimony for Self Sufficiency, Child Welfare and Central Services: February 26, 2019
- DHS Wrap-up: February 27, 2019



www.oregon.gov/dhs