

# Program of All-inclusive Care for the Elderly (PACE)



**Lisa Bouchell, APD PACE Policy Analyst**  
**Cindy Susee, APD PACE Financial Analyst**  
**2019**

# PACE Model



Delivering all needed medical and supportive services, PACE provides the entire continuum of care and services to seniors with chronic care needs while maintaining their independence in the community for as long as possible. PACE services include, but are not limited to, all Medicare and Medicaid services. Individuals may be enrolled into PACE and may not be eligible for either Medicare or Medicaid (pay privately).

Nationally, PACE is operating in 31 states, serving over 49,000 participants.

# PACE Eligibility



**The PACE participant is:**

- ▶ 55 years old or older
- ▶ Living in a PACE service area
- ▶ Able to reside safely in the community
- ▶ Assessed at Nursing Facility Level of Care (SPL 1-13)

# PACE Services

PACE services include but are not limited to:

Long-term care services

Adult Day Services

In-home services

CBC facility care

Nursing home care

Palliative care

Medical equipment & supplies

Medical Care & Rx coverage

Medical clinic services at the Health &  
Social centers



# PACE Services con't



Emergency medical services

Specialty medical care

Therapeutic services: OT, PT, speech, etc.

Mental health & behavioral services

Dental services

Social Work services

Therapeutic Recreational services

Transportation

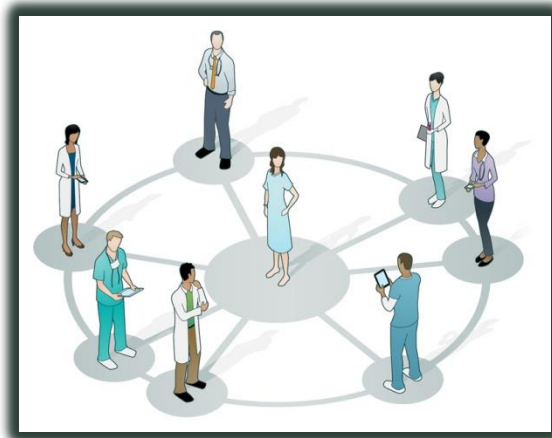
Family/Caregiver Support



# The PACE Interdisciplinary Team

## The PACE Interdisciplinary Team (IDT) may include:

- ❖ Primary Care Providers
- ❖ Registered Nurses
- ❖ Licensed therapists
- ❖ Licensed MSW staff
- ❖ Therapeutic aides
- ❖ Dietitians
- ❖ Other relevant healthcare professionals



# PACE Enrollment

- PACE services can be provided in a Community Based Care (CBC) facility, an In-Home setting or a Nursing Facility (if participant is already enrolled in PACE).
- The PACE organization Intake Specialists screen for PACE eligibility, provide information to prospective participants, and secure enrollment.



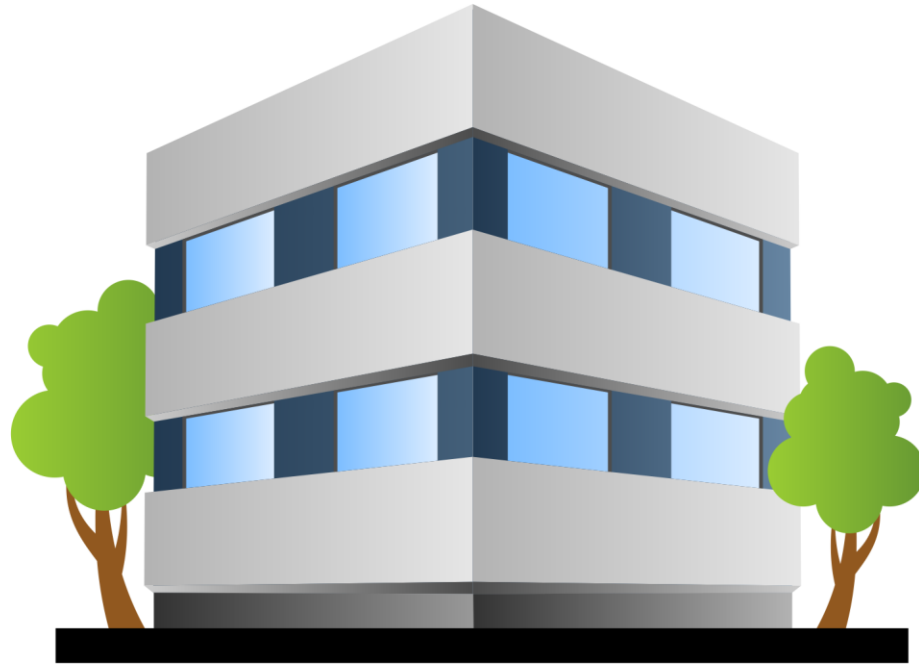


# PACE in Oregon



Oregon PACE Service areas include Multnomah and Clatsop counties and parts of Washington, Tillamook and Clackamas Counties, serving over 1,500 participants.

# Providence ElderPlace



# ElderPlace Service Areas

ALL OF MULTNOMAH COUNTY

WASHINGTON COUNTY

Beaverton, Tualatin, Cornelius, Forest Grove,  
Hillsboro, Sherwood, Portland

CLACKAMAS COUNTY

Portland (Milwaukie), Happy Valley, Clackamas, Lake  
Oswego, Marylhurst, Gladstone, West Linn, Tualatin,  
Oregon City

ALL OF CLATSOP COUNTY

TILLAMOOK COUNTY

Manzanita, Nehalem, Wheeler

# ElderPlace Service Areas

<b>Washington</b>	
97231	97123
97003	97124
97005	97140
97006	97223
97007	97224
97008	97225
97062	97229
97078	a portion of 97116 (south of Highway 6)
97113	

<b>Clackamas</b>		
97206	97035	97036
97219	97034	97027
97222	97268	97068
97086	97269	97062
97015	97267	97045

<b>Clatsop</b>	
97121	97138
97146	97145
97103	97102
97110	

<b>Tillamook</b>
97131
97130
97147

# ElderPlace Service Sites



Providence ElderPlace currently has 9 Health and Social centers, including 3 where ElderPlace-managed housing is co-located. The Health & Social centers offer PACE participants comprehensive integrated care from an ElderPlace team of healthcare and social service professionals.

# ElderPlace Service Sites con't

In addition to receiving healthcare services at the center, participants have the opportunity to join in social and recreational activities and eat a nutritious meal.

Transportation is provided to and from ElderPlace Health and Social Centers and is available for medical appointments outside of the center. If participants are unable to attend a Health and Social Center, their team will visit them at home.



# Referrals to ElderPlace

Referrals may come from case managers, community sources, or others.

Potential participants may be referred to Providence ElderPlace Intake Specialists at

- 503-215-6556 for Portland Metro service areas
- 503-717-7150 for the North Coast service areas



# Collaboration & Communication

PACE is a partnership, not just between participants and the program, but also with the APD/AAA Offices, the PACE organization and the State of Oregon. We all share the same goal of enhancing the quality of life for Oregon's aging population!





# PACE Resources

## **Medicare.gov PACE Overview**

<https://www.medicare.gov/your-medicare-costs/get-help-paying-costs/pace>

## **National PACE Association**

<https://www.npaonline.org/>

## **CMS PACE Manual**

<https://www.cms.gov/Regulations-and-Guidance/Guidance/Manuals/>

## **APD Case Management Tools – PACE Website**

<http://www.dhs.state.or.us/spd/tools/cm/PACE/index.htm>

## **Oregon Administrative Rules – OAR 411-045**

[http://www.dhs.state.or.us/policy/spd/rules/411\\_045.pdf](http://www.dhs.state.or.us/policy/spd/rules/411_045.pdf)

## **PACE Links on DHS-APD Internet site**

<https://www.oregon.gov/DHS/seniors-disabilities/SPPD/Pages/index.aspx>

<https://www.oregon.gov/DHS/SENIORS-DISABILITIES/LTC/Pages/index.aspx>

## **PACE Fact Sheet**

<https://www.oregon.gov/DHS/SENIORS-DISABILITIES/SPPD/Documents/PACE-Fact-Sheet.pdf>

# PACE Resources



Oregon  
Department of  
Human Services



## Assistance

- [Food Assistance](#)
- [Cash Assistance](#)
- [Child Care Assistance](#)
- [Domestic Violence Victim Services](#)



## Children & Youth

- [Critical Incident Report Team \(CIRT\)](#)
- [Adoption](#)
- [Foster Care & Foster Parenting](#)
- [Independent Living Program](#)
- [Children with Developmental Disabilities](#)
- [Report Child Abuse](#)
- [Safe Surrender](#)



## Seniors & People with Disabilities

- [Senior Services](#)
- [Adults with Developmental Disabilities](#)
- [People with Physical Disabilities](#)
- [Long-Term and In-Home Care](#)
- [Report Adult Abuse](#)

# PACE Resources

Oregon Department of Human Services / Seniors & People with Disabilities / SPPD

## Seniors and People with Physical Disabilities

### ► SENIORS & PEOPLE WITH PHYSICAL DISABILITIES

- ABUSE & NEGLECT
- ADVISORY GROUPS
- APD DIRECTOR'S MESSAGES
- DATA
- DISABILITY BENEFITS
- EMPLOYMENT SERVICES
- GENERAL ASSISTANCE PROGRAM
- HOME & COMMUNITY-BASED SERVICES
- LONG-TERM CARE
- MEDICAL ASSISTANCE
- OFFICE LOCATIONS - FIND AN OFFICE IN YOUR AREA
- PUBLICATIONS
- PROVIDER/PARTNER RESOURCES
- STATE INDEPENDENT LIVING COUNCIL
- STATE UNIT ON AGING



Services are designed to protect a person's individual independence, dignity and choice. Staff at local offices and through community partners can help you find the right mix of services that meet your needs.

### Programs & Services

**ADRC** Aging and Disability Resource Connection of OREGON can help you and your

family find needed services and supports.

- [Report Adult abuse and neglect](#)
- [Caregiver supports](#)
- [Long-term care](#)
- [Long-term Care Referral Registry](#)
- [Licensed facility complaint information](#)
- [Program for All-Inclusive Care for the Elderly \(PACE\)](#)

### Additional Resources

- [Food benefits](#)
- [More food and nutritional help](#)
- [Disability benefits](#)
- [Senior employment](#)
- [Vocational Rehabilitation](#)
- [Employing a homecare or personal support worker](#)

### Providers/Partners

If you are an APD provider or partner, find information, tools and resources on the [APD Provider/Partner Resources site](#).

### Latest News

- [APD Stakeholder Meeting Materials](#)
- [APD Director's Message](#)
- [Home and Community-Based Services](#)
- [Department of Labor Fair Labor Standards Act Stakeholders Information](#)

### Stay Connected

 [Find us on Facebook](#)

 [Follow us on Twitter @OregonDHSAPD](#)

# PACE Resources

Oregon Department of Human Services / Seniors & People with Disabilities / Long Term Care

## Long-Term Care

### ▶ LONG-TERM CARE

FACILITIES LICENSING

ACTIVITIES OF DAILY LIVING  
ASSISTANCE SERVICES

POLICY AND PROGRAM  
DEVELOPMENT

**Long-term care means a range of services that help people who can no longer meet their own daily needs. Long-term care is generally not covered by traditional health insurance or Medicare. Here you will find an overview of services and some options to help pay for care.**

### Long-Term Care options may include:

#### Services in your home

Home-based services and supports help you stay independent and safe in your home. Services vary based on one's level and type of need. Services can be short-term, while recovering from an injury or illness, or long-term for many years, and can range from simple checks to more in-depth services. For more information about in-home care services, [contact your local Aging and Disability Resource Connection](#).

#### Employing a Homecare or Personal Support Worker

If you are an individual or family that employs or wants to find a homecare or personal support worker, [visit the Home Care Commission's Consumer/Employer information page](#).

#### Care facilities

Find [information about types of care facilities, licensed care services and other resources](#) to help you make an informed decision.

A guide to Oregon's Assisted Living and Residential Care Facilities (including Memory Care) and a Consumer Comparison Tool may be found on the [ADRC Assisted living and residential care facilities](#) website.

A guide to Oregon's Adult Foster Homes may be found on the [ADRC Foster Homes](#) website.

#### **Program for All-Inclusive Care for the Elderly (PACE)**

The [Program for All-inclusive Care for the Elderly \(PACE\)](#) is a Medicare program and a Medicaid service option that offers an array of health and care services in an all-inclusive



# Contacts

Providence ElderPlace Intake Specialists

503-215-6556 (metro service areas)

503-717-7150 (North Coast service area)

Jeannie Frederick, Providence ElderPlace Marketing & Enrollment Manager

503-215-3741 or **jeannie.frederick@providence.org**

Lisa Bouchell, PACE Policy Analyst, APD

503-947-0192 or **lisa.bouchell@dhsoha.state.or.us**

Cindy Susee, PACE Financial Analyst, APD

503-945-6448 or **cynthia.susee@dhsoha.state.or.us**

PACE Oregon Toll-free: 1-844-224-7223

*The End*