



IRONOR 24

STATE-LEVEL EXERCISE

INITIAL PLANNING MEETING (IPM)

SEPT. 25, 2023

Facilitated By: Robert Quinn | State Exercise Officer



Initial Planning Meeting Agenda

Exercise Overview

- Dates & Daily Breakdown
- Exercise Goals & Objectives
- XPA Received
- State Exercise Planning Team

1-1:30 p.m.

Planning Process

- Planning & Coordination Meetings
- Exercise Bootcamp
- Objective-Focused Build-Up

1:30-1:45 p.m.

Exercise Scenario Overview

- Scenario Scope
- Anticipated Available Tools

1:45-2 p.m.

Open Discussion

- General Questions, Comments, Concerns

2-2:15 p.m.

Action Items

2:15-2:20 p.m.

Available Open Time

2:20-2:30 p.m.



Dates & Daily Breakdown

Monday, Oct. 28	Tuesday, Oct. 29	Wednesday, Oct. 30	Thursday, Oct. 31	
Exercise Prep & Education	START EX ----->		END EX	--
Build-Up	Exercise Play			Hot Wash/ Exercise Closeout
8 a.m.-4:30 p.m.	8 a.m.-4:30 p.m.	8 a.m.-4:30 p.m.	8 a.m.-noon	noon-4:30 p.m.

**4-day play is not required to participate.
Participate to your availability and capability**



Three (3) Exercise Goals

G1-Operational Coordination: The Oregon Department of Emergency Management (OEM) will implement and maintain an operational coordination structure within 96-192 hours in response to a 9.0 Cascadia Subduction Zone Earthquake.



G2-Operational Communications: The ECC will implement and maintain a redundant communications system within 96-192 hours in response to a 9.0 Cascadia Subduction Zone Earthquake.



G3-Mass Care Services: ECC Emergency Support Function (ESF) #6 will implement statewide mass care operations within 96-192 hours in response to a 9.0 Cascadia Subduction Zone Earthquake.





G1: Operational Coordination-O1.1



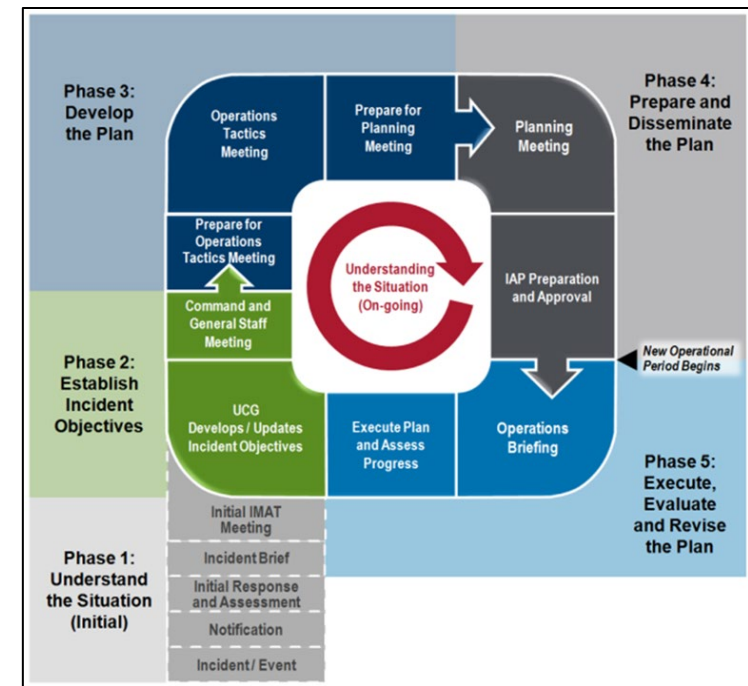
Operational Rhythm

The state ECC Planning Section, ESF #5, will implement and maintain an Operational Rhythm within 96-192 hours of ECC activation in accordance with 2023 Emergency Operations Plan (EOP) Base Plan in response to a 9.0 Cascadia Subduction Zone Earthquake.

Does the ECC implement a recurring operational rhythm?

Assess the implementation and conduct of the Planning Process.

Are statewide partners (Local, State, Tribal, etc.) integrated into the operational rhythm?





G1: Operational Coordination-01.2



Common Operating Picture/Situation Report

The state ECC Planning and Intelligence Coordination Section, ESF #5, will initiate the collection of situational awareness information and produce a situation report within the first operational period of ECC activation in accordance with the ESF #5 Annex in response to a 9.0 Cascadia Subduction Zone Earthquake.

Can the state ECC develop a Situation Report per operational period?

Are statewide peers integrated into the Common Operating Picture development?

Are varying methods of sharing critical incident information created to support the response efforts?



**ESF 5
Information and
Planning**



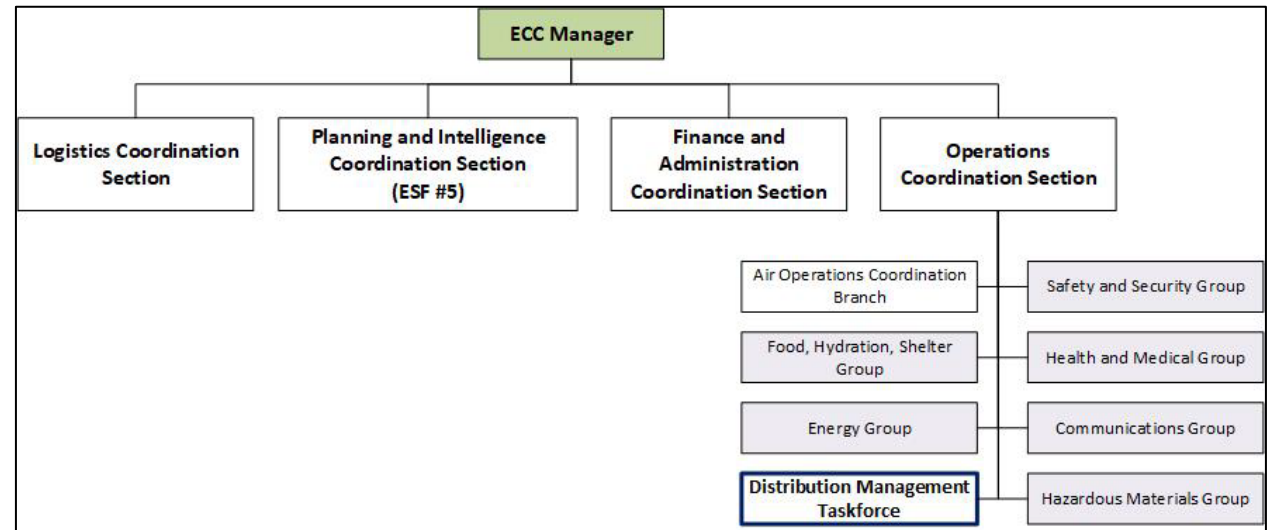
G1: Operational Coordination-01.3



Resource Allocation & Mobilization

The state Emergency Coordination Center (ECC)-Operations Section will establish a Distribution Management Taskforce to allocate and mobilize resources within 96-192 hours of ECC activation in accordance with Distribution Management Plan and in response to a 9.0 Cascadia Subduction Zone Earthquake.

Planning and coordinating support to jurisdictions for distribution management activities





G2: Operational Communications-02.1



State ECC-County EOC/ECC

The State of Oregon Emergency Coordination Center (ECC), Emergency Support Function (ESF) #2, will establish interoperable communications across 36 Oregon Counties and FEMA Region X within 96-192 hours in accordance with the State of Oregon Auxiliary Communications Plan in response to a 9.0 Cascadia Subduction Zone Earthquake event.

Complete a State ECC
PACE Plan w/ Local
Partners

Voice over Amateur &
SHARES

Winlink over Amateur &
SHARES



G2: Operational Communications-02.2



State ECC-Statewide PSAPs

The State of Oregon Emergency Coordination Center (ECC), Emergency Support Function (ESF) #2, will implement redundant communications capabilities between the State ECC and Statewide Public Safety Answer Points (PSAPs) within 96-192 hours in accordance with the ESF #2 Annex in response to a 9.0 Cascadia Subduction Zone Earthquake event.

Can the state ECC contact PSAP locations statewide via redundant communications methods?

Can statewide PSAPs share critical incident information via redundant communications methods?



G2: Operational Communications-02.3



State Continuity of Operations (COOP) Communications

The State of Oregon Emergency Coordination Center (ECC) will implement and maintain redundant communications capabilities between the state ECC and State of Oregon Executive Branch Departments within 96-192 hours in accordance with the State of Oregon Red Book in response to a 9.0 Cascadia Subduction Zone Earthquake.

Can the state ECC contact state Executive Branch Departments via redundant communications methods?

Can state Executive Branch Departments share critical incident information via redundant communications methods?



G2: Operational Communications-02.4



State Continuity of Government (COG) Communications

The State of Oregon Emergency Coordination Center (ECC) will implement and maintain redundant communications capabilities between the state ECC and State of Oregon Leadership within 96-192 hours in accordance with the State of Oregon Red Book in response to a 9.0 Cascadia Subduction Zone Earthquake.

Can the state ECC contact state leadership via redundant communications methods?

Can state leadership share critical incident information via redundant communications methods?



G2: Mass Care Services-03.1



Mass Care Situational Awareness

Emergency Support Function (ESF) #6 will develop a Mass Care-focused Common Operating Picture, to include: community lifeline essential elements of information, local jurisdiction mass care needs, and tsunami evacuation point survivor needs to provide to the State ECC by 1400 of each operational period in accordance with ESF #6 Annex Concept of Operations following a 9.0 Cascadia Subduction Zone Earthquake.

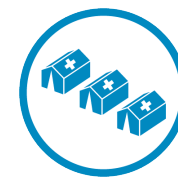
Coastal geographic area
needs assessment

Test lifelines assessment
model

Determine mass care
service needs from
partners



G2: Mass Care Servics-03.2



Food, Water, Shelter Strategy Development & Implementation

Emergency Support Function (ESF) #6 will develop and execute operations to provide sheltering, feeding, and water supplies to impacted jurisdictions in accordance with the ESF #6 Annex Concept of Operations following a 9.0 Cascadia Subduction Zone Earthquake event.

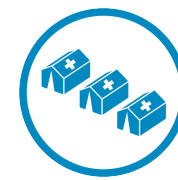
Dept Operations Center
operating and staffing
plan

Operational period mass
care-related incident
objectives

Coordination, resource
support, and expertise to
simulated or actual local
play



G2: Mass Care Servics-03.3



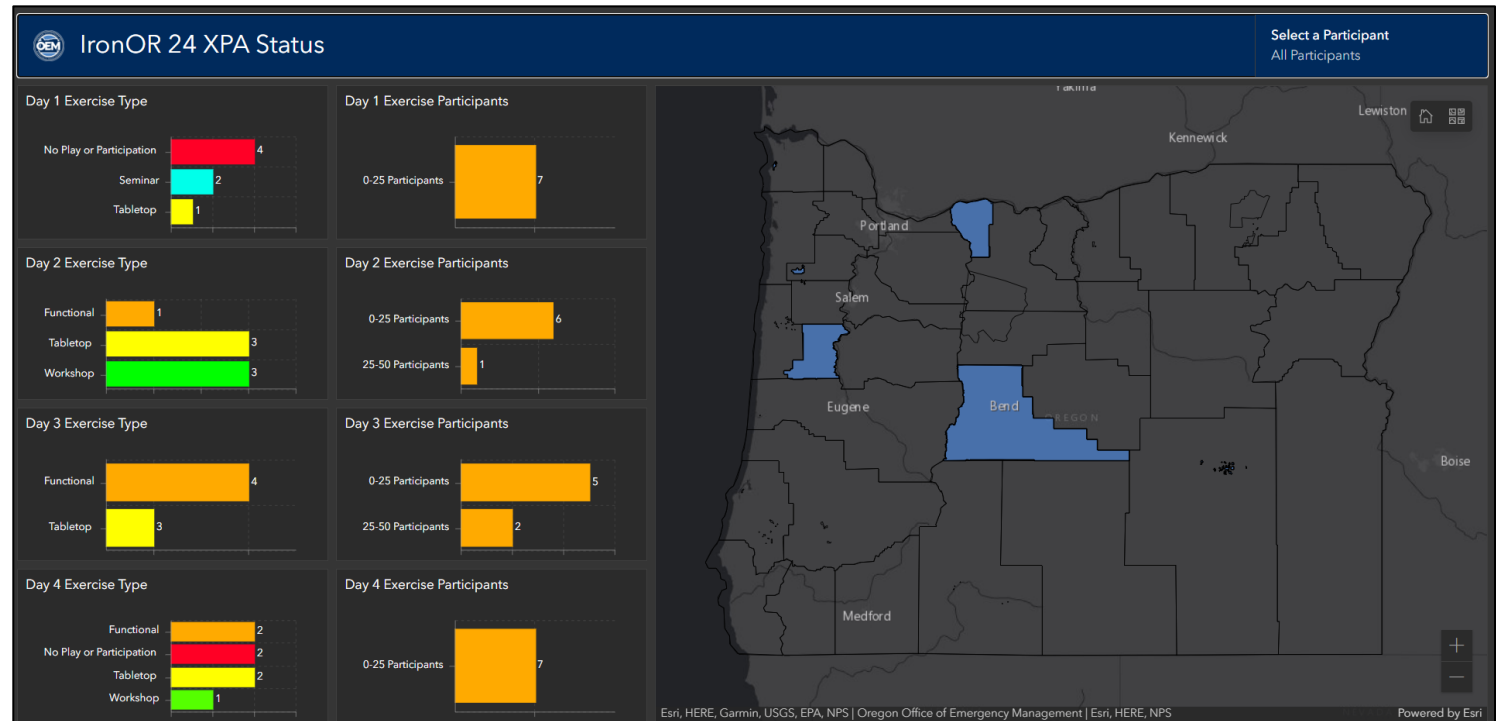
Evacuation Support & Planning

Emergency Support Function (ESF) #6 will develop logistics and operational planning and tracking for mass evacuation support for medically frail, injured, and other survivors in accordance with ESF #6 Annex Concept of Operations following a 9.0 Cascadia Subduction Zone Earthquake event.



Extent of Play Agreements

- XPA “due” Sept. 29 | Final Date = Oct. 30
 - Coordinate local play (public, private, & non-profit)
- Oregon Tribes
 - Burns Paiute
 - Grand Ronde
- Counties
 - Deschutes
 - Hood River
- Municipalities
 - City of Seaside
- Other
 - Portland State University





Participant Width of Play



FEMA

Federal Play

Regional Response Coordination Center (RRCC) Active

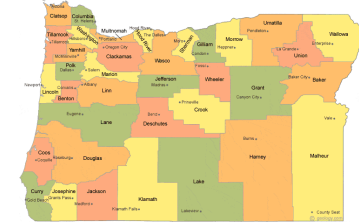


State Play

- State ECC Active
- Department Operations Centers Active
- Field Operations | Mass Care



Oregon Tribe Play



County Play

- County EOC/ECC Active
- Field elements determined by local objectives

Municipal Play

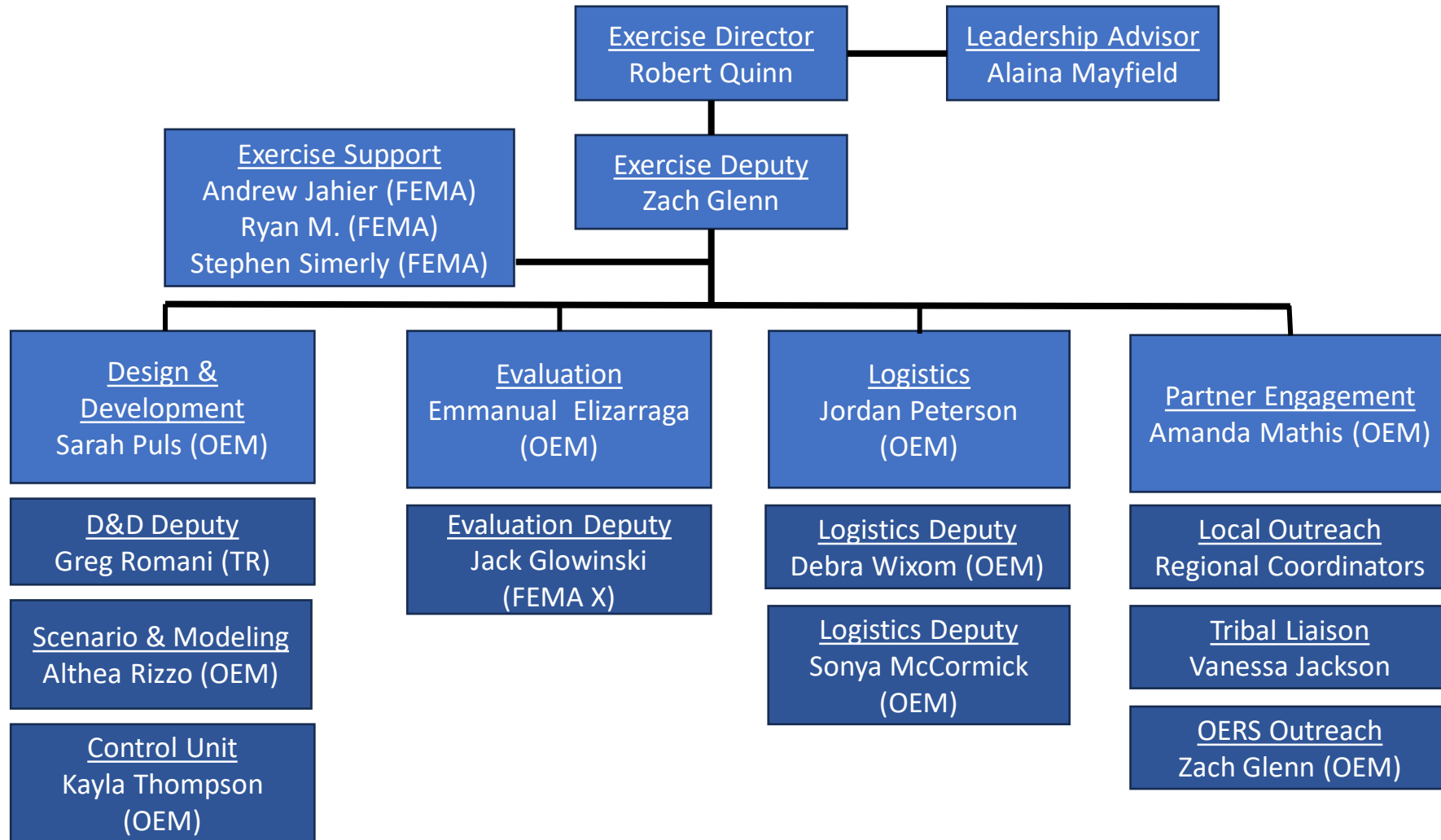
- Municipal EOC/ECC level of play determined by local objectives
- Field elements determined by local objectives

Non-Profit & Private Sector Play (State Interest & Local Objectives)





State Exercise Planning Team





Exercise Build-up Activities | Overview

Highly Encouraged

Optional

Planning Meetings	Coordination Meetings	Exercise Bootcamp	Objective Build-Up
<ul style="list-style-type: none"> IPM Sept. 25, 2023 MPM April 8, 2024 MSEL Aug. 20, 2024 FPM Sept. 30, 2024 <p>Virtual</p>	<ul style="list-style-type: none"> November 6, 2023 February 5, 2024 May 6, 2024 July 15, 2024 <p>Virtual</p>	<ul style="list-style-type: none"> 146: HSEEP offerings Education sessions MSEL workshop <p>Both Options</p>	<ul style="list-style-type: none"> 4Q23 Resource Mgmt. 1Q24 Mass Care 2Q24 Op. Comms 3Q24 Situational Awareness <p>Virtual</p>
<p><u>Purpose</u> State will provide critical exercise design, conduct and evaluation details.</p>	<p><u>Purpose</u> Check-in with participating organizations with updates and address questions/comments.</p>	<p><u>Purpose</u> Provide education and expertise to exercise point of contacts.</p>	<p><u>Purpose</u> Quarterly ECC drills will be used to develop awareness and capability related to each exercise objective.</p>
<p><u>Audience</u> Lead Exercise POC</p>	<p><u>Audience</u> Lead Exercise POC & Other Interested Organizations</p>	<p><u>Audience</u> Lead Exercise POC (open to all)</p>	<p><u>Audience</u> Exercise Players</p>



Exercise Build-up Activities | Coordination Meetings

Dates

- November 6, 2023
- February 5, 2024
- May 6, 2024
- July 15, 2024

Purpose = Check-in with participating organizations with updates and address questions and comments.

Agenda (60-90 Minutes)

- State Planning Team Updates | 20-30 Minutes
- Upcoming *IronOR 24* Events | 10 Minutes
- Open Discussion | 20-30 Minutes

Audience = Lead Exercise POC & Other Interested Organizations



Exercise Build-up Activities | Bootcamp Education Sessions

Activity	Timing
Event Start	8:30 a.m.
Scenario Document & Ground Truth <ul style="list-style-type: none"> • Overview & Use 30 minutes • Integrating Data 60 minutes 	8:30-10 a.m.
Master Scenario Events List (MSEL) <ul style="list-style-type: none"> • Overview & Use 30 minutes • Adding Injects 60 minutes 	10-11:30 a.m.
Evaluation Plan & Exercise Evaluation Guides (EEGs)	11:30 a.m.-12:15 p.m.
Lunch	12:15-1 p.m.
Exercise Structure & Simulation Cell <ul style="list-style-type: none"> • Site Control, • Simulation Cell Staffing 	1-2 p.m.
Open Collaboration Space	2-4:30 p.m.
Session #1 Tuesday, Jan. 9, 2024 <i>Central Oregon</i>	
Session #2 Tuesday, Feb. 20, 2024 Salem – OEM ECC	



Exercise Build-up Activities | Objective Build-up

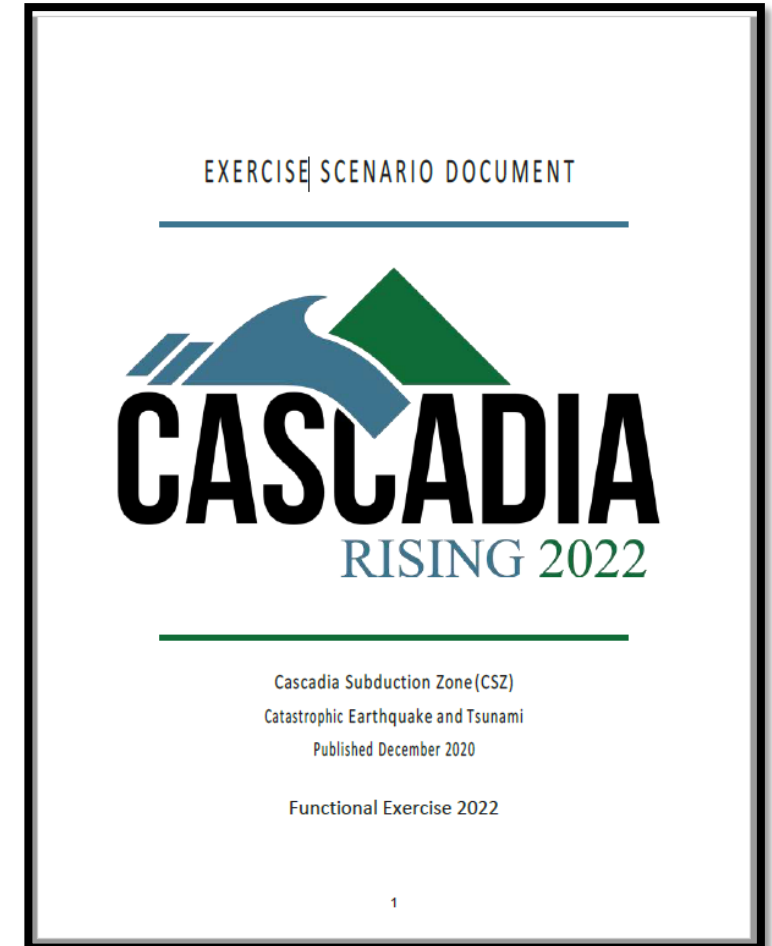
Upcoming OEM Quarterly Exercise Schedule

Quarter	Date	Focus
4Q23	Dec. 4	Resource Requests O1.3 – Distribution Management System Plan Seminar Resource Request Process Seminar
	Dec. 5	Resource Request Drill 9-11 a.m.
1Q24	Feb. 5	Mass Care Seminar O3.1 – Food & Water Distribution O3.2 – Sheltering Strategy
	Feb. 6	<i>To be determined</i>
2Q24	April 8	Communications Seminar O2.1 – EOC Interoperable Communications Seminar O2.2 – PSAP Interoperable Communication Seminar
	April 9	Communications Drill 9-11 a.m.
3Q24	Aug. 5	Situation Reporting O1.1 – Operational Rhythm Seminar O1.2 – Common Operating Picture Seminar (30-45 Minutes)
	Aug. 6	Situation Report Drill ☐ OpsCenter 9-11 a.m.



Exercise Scenario & Ground Truth Overview

- A 9.0 magnitude earthquake results in a complete rupture of the 700-mile Cascadia Subduction Zone (CSZ) fault line.
- Ground shaking lasting 5 minutes and generating a tsunami wave of 3-80 feet that reaches the coast 10-30 minutes post-earthquake, depending on location.
- Earthquake shaking, surface buckling, fissuring and liquefaction caused devastating effects, including loss of life, injuries, and damage to natural and man-made environments.
- All structures within several hundred yards of the shoreline have been destroyed. The coastal zone experienced significant loss of life, and thousands of people are unaccounted for.
- Aftershocks of 7.0 or greater magnitude will be experienced within 24 hours.



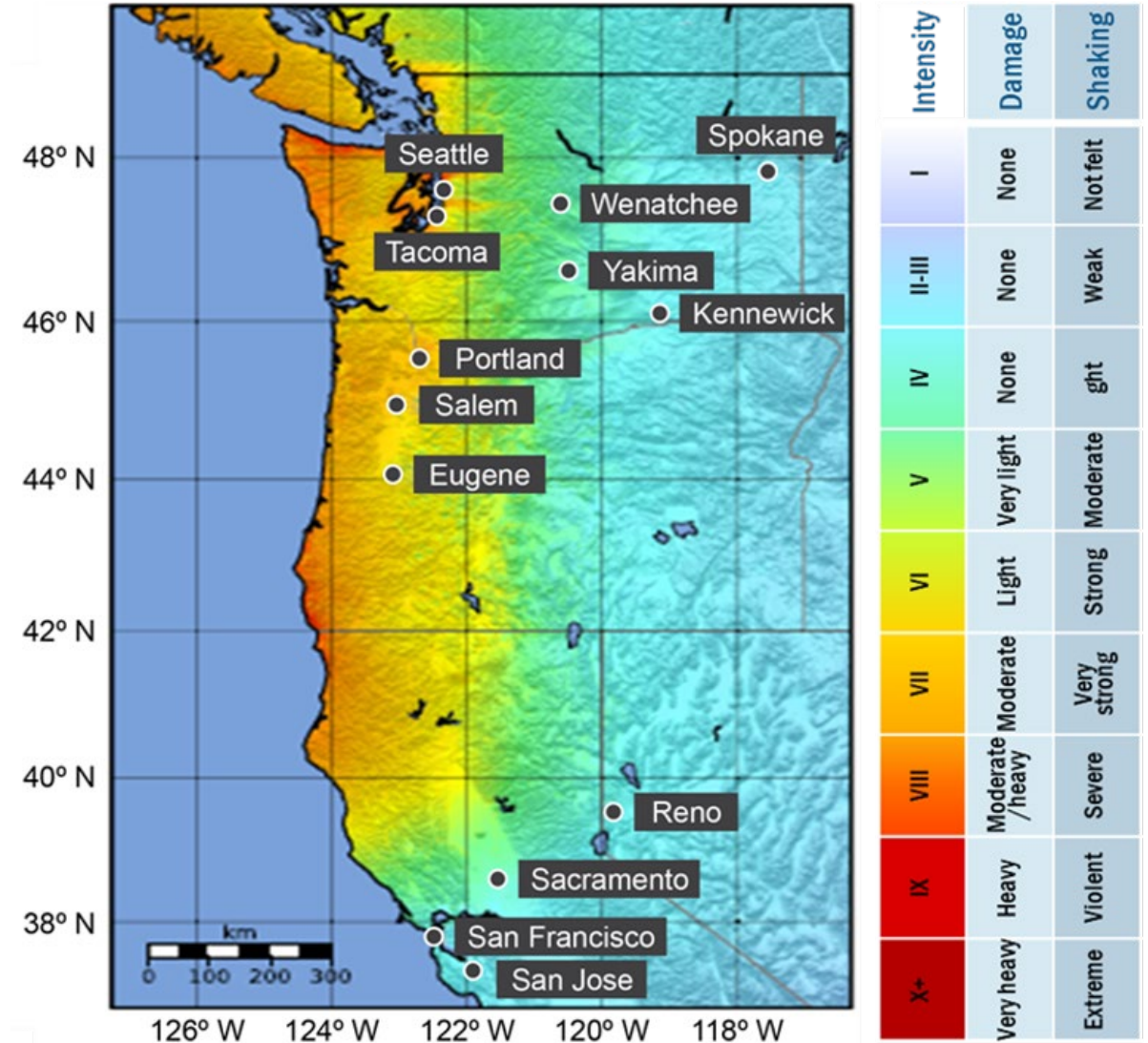


Exercise Scenario & Ground Truth Overview | Maps

- A. Ground Shaking
- B. Infrastructure Status
 - Power Outages
 - Roads Status
 - Bridge Status
 - Airport Status
- C. Federal Force Laydown Map

GIS Map/Layers = Primary

Printed Maps = If Requested





Exercise Scenario & Ground Truth Overview | Ground Truth Tool

File Home Insert Draw Page Layout Formulas Data Review View Help Acrobat

Clipboard Font Alignment Number Styles Cells Editing Sensitivity Add-ins

E27

FUNCTIONAL EXERCISE 2023
MASTER GROUND TRUTH DOCUMENT

Table of Contents

- [Timeline](#)
- [MMI Descriptions](#)
- [Community Lifeline Worksheets](#)
- [EOC Locations](#)

Lifeline	Component	Sub-Component
Transportation	Highway/Roadway	Bridges
	Highway/Roadway	Roads
	Highway/Roadway	Tunnels
	Railway	Railroad Stations
	Railway	Rail lines
	Aviation	Airports
	Maritime	Port
	Maritime	Shipping lanes
Public transit	Buses	
Communications	Telecommunications	PSAPs
	Telecommunications	Fiber/Cable/lines
	Telecommunications	Repeater Towers
	Telecommunications	Transmission centers/hubs
	Telecommunications	Data centers
	Finance	ATMs
	Public information	Public messaging/ Alerting
Food, Water, Sheltering	Food	Food Manufacturing
	Food	Commercial food distribution
	Food	Commercial Food Supply Chain
	Food	Food Distribution Centers
	Water	Potable Water Systems
	Wastewater	Waste Water Systems

GUIDE | TIMELINE | MMI DESCRIPTIONS | **HOW TO USE** | EOC Locations | Transportation | Safety & Security | Health & Medical | Food, Water, Sheltering | Hazardous Materials | Energy (Power & Fuel)



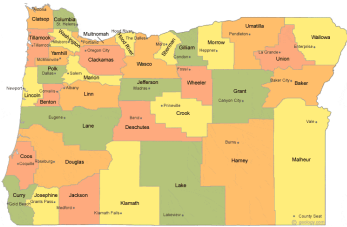
Exercise Document Status

For Local/Tribal Partners

Document	Assigned To	Local Development Expectation
Scenario Document	Scenario Unit	No
Exercise Plan (ExPlan)	Exercise Director	State Template & Yes
Player Handout	Design & Development Group Lead	State Template & Yes
Ground Truth	Design & Development Group Lead	State Template & Yes
Controller/Evaluator (C/E) Handbook	Deputy Exercise Director	State Template & Yes
Master Scenario Events List (MSEL)	Design & Development Group Lead	State Template & Yes
Exercise Evaluation Guide(s) (EEG)	Evaluation Group Lead	State Template & Yes
Control Staff Instructions (COSIN)	Design & Development	State Template & Yes
Evaluation Plan (EvalPlan)	Evaluation Group Lead	State Template & Yes
Participant Feedback Form	Evaluation Group Lead	State Template & Yes
Exercise Logistics Plan	Logistics Group Lead	Yes



Engagement Strategy



County-City	OERS	Tribal Community
<p>OEM Regional Coordinators</p>	<p>Exercise Deputy Director (Zach G.)</p>	<p>OEM Tribal Liaison (Vanessa J.)</p>
<p><u>Short-Term</u></p> <ul style="list-style-type: none"> Regional Coordinators will be touching base with County EMs. Municipal POCs reach out to County or OEM RC. 	<p><u>Short-Term</u></p> <ul style="list-style-type: none"> September OERS Council meeting. October initial meeting w/OERS agencies individually (OEM set-up) 	<p><u>Short-Term</u></p> <ul style="list-style-type: none"> October 16 Discussion 11:00 - 12:00

Open Discussion

How can we support
your **XPA Development**
(guidance/information)?



Remaining questions
about the scope or vision
for *IronOR 24*?



IRON OR 24

- JPEG Logo
- PowerPoint Template
- Document Templates



2023-2024 FEMA EMI Exercise Offerings

Course	Type	Dates (Month)
0051: Exercise Program Management	Virtual	February, June, September
0131: Exercise Evaluation & Improvement Planning	Both	In-Person: March 4-7, 2024 Virtual: February, September 2024
0050: Exercise Control and Simulation FY24 Offerings	In-Person	December 2023; February, April, July 2024
0139: Exercise Design and Development	Both	In-Person: December 2023; February, April, July 2024 Virtual: January, September 2024



Next Steps

Local/Tribal	OERS
Finalize XPA Sept. 29, 2023	Meet w/OEM to Coordinate Play Nov. 1, 2023
Host Internal Kick-Off Meeting Dec. 1, 2023 (Recommendation)	
All	
3Q23 ECC EOP Seminar Oct. 9, 2023 Attend Coordination Meeting Nov. 6, 2023 HSEEP Offering November 2023 (Date coming) Coordinate Internal Play Dec. 1, 2023 4Q23 Resource Request Dec. 4, 2023 Exercise Bootcamp Education Session #1 Jan. 9, 2024 Exercise Bootcamp Education Session #2 Feb. 20, 2024	

THANK YOU

