

Oregon Emergency Management State Preparedness Incident Response Equipment (SPIRE) Grant Annual Report 2022



STATE PREPAREDNESS INCIDENT RESPONSE EQUIPMENT (SPIRE) GRANT

In 2017, House Bill 2687 established the Resiliency Grant Fund. The bill provided two full-time employees and \$5 million (Article Q bonds) to the Oregon Department of Emergency Management (OEM) to build, manage and fund the State Preparedness Incident Response Equipment (SPIRE) grant program. Since its inception, the SPIRE grant program has gone through two application cycles, making emergency equipment available where needed most. Building on the first year's success, House Bill 2426 (2021) added new provisions to the Resiliency Grant Fund to prioritize equipping urban search and rescue teams. The Homeland Security Council developed and updated the list of emergency preparedness equipment.



EXECUTIVE SUMMARY

Emergency response equipment provided by the SPIRE grant is being utilized by Oregon communities during emergencies and is both mitigating the impacts of and supporting response and recovery from disasters in Oregon. In 2022, OEM received a new round of funding for additional equipment, SPIRE II, while working to complete and distribute equipment from SPIRE I. SPIRE II grant application submission and review is complete, and OEM is drafting agreements with recipients and beginning to purchase equipment for communities. Delays due to supply chain issues continue to impact purchases for SPIRE I and are anticipated to impact purchases for SPIRE II.

2022 has been a year of changes for OEM, its staff, grant recipients and vendors, with ongoing disasters, equipment delays and OEM becoming a standalone agency. It has been a year of growth as OEM develops systems to ensure emergency equipment is ready and available in the communities where it's needed most.

This year, SPIRE II funded 46 awardees with 62 pieces of equipment from across all four priority levels. Equipment included all equipment offered in round one, minus rescue jet skis, and added communications trailers, mobile command centers, vehicle barrier systems with trailers, portable lighting, SAR drones, snow cats, sandbagging machines, tactical command vehicles and traffic message boards.

In 2019, SPIRE I funded 79 awardees with 81 pieces of priority level one equipment, including water purification trailers, mass casualty incident support trailers, high-axle all-terrain vehicles, portable power generators, fuel transportation tankers, mobile water tankers, rescue boats and rescue jet skis.

RECOMMENDATIONS

OEM recommends continued funding of the Resilience Grant Fund.

Equipment provided through the SPIRE grant program has been effectively leveraged to mitigate the impacts of and improve emergency response in Oregon. For example, OEM awarded Wallowa County a 56kW generator in 2019 through SPIRE I. On August 11, 2022, Wallowa's SPIRE generator was deployed to the sewage plant in the city of Wallowa to get the facility operational again following a destructive hail and windstorm that rolled through the county. According to Wallowa County Emergency Services Director Paul Karvoski, property damage in the county was extensive due to the storm, with most of the town sustaining heavy damage to the exterior of all buildings and exposed vehicles. Thanks to the SPIRE generator, there were no sewage overflows. SPIRE equipment was also placed on standby for deployment to impacted communities during the 2020 Labor Day Wildfires and the 2021 Willamette Valley Ice Storm.



SPIRE GRANT PROGRAM INFORMATION

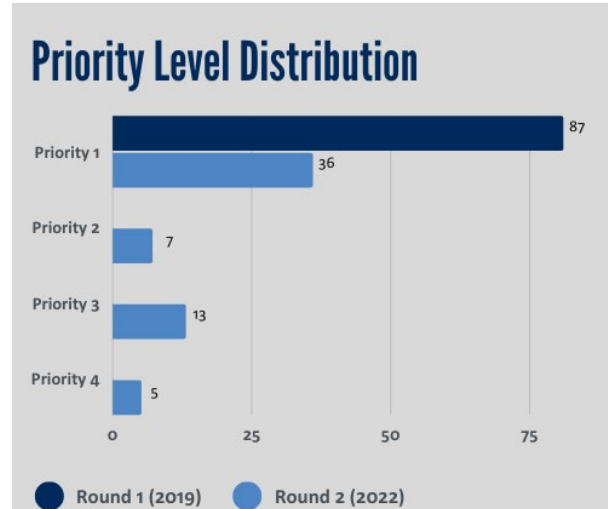
EQUIPMENT

The SPIRE grant requires the Oregon Homeland Security Council to periodically update and revise the equipment list and assigned priority levels. The approved preparedness equipment list is divided into four priority levels.

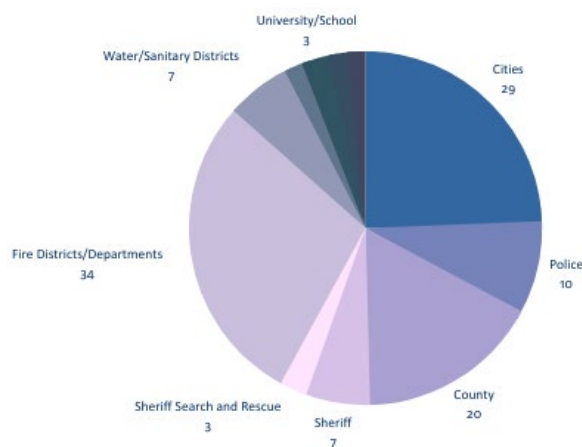
- Priority 1: Save/Sustain Lives
- Priority 2: Obtain/Maintain Situational Awareness
- Priority 3: Incident stabilization
- Priority 4: Initiate Recovery

In the first year of SPIRE funding, only items from Priority 1 were granted. For SPIRE II, OEM chose to ensure that all priorities received funding to ensure all phases of emergency response and recovery and that all communities across Oregon have adequate resources.

In 2021, House Bill 2426 amended the original bill by prioritizing applications to equip urban search and rescue teams. OEM worked with the state search and rescue coordinator and large fire departments across the state to ensure the urban SAR equipment recommendations were in line with local needs.



The state purchases equipment through a procurement process in which all equipment lists are posted for a competitive open bid solicitation based on price and other factors. Each item must be a capital asset, eligible for financing with tax-exempt bonds, with an individual minimum cost of \$5,000. The awardee is responsible for all costs involved with the operation of the equipment, including maintenance, insurance, repairs, staffing and response. The state retains the option to request the use of the equipment elsewhere if an emergency occurs. Equipment is purchased in priority order, with the Urban Search and Rescue prioritized first.



APPLICANTS

Qualified SPIRE applicants include any organization responsible for or containing expertise in emergency preparedness that is a local government, special government body, or a private organization eligible for tax-exempt status under 501(c)(3) of the Internal Revenue Code. This includes federally recognized tribes. Each qualified applicant can submit three applications (for a single piece of equipment per application) but can be included as a partner on unlimited applications.

2022 PROCESS

In March of 2022, the applications opened for the SPIRE II. Applications closed in June with 193 applications from 119 entities. SPIRE application packages were reviewed by a committee made up of volunteers from different emergency management disciplines and geographic areas. This year, using criteria provided by the state, the committee scored each application based on:

- A demonstrated need.
- The ability to keep and maintain the equipment.
- An inventory process.
- A commitment to partnership-based support.

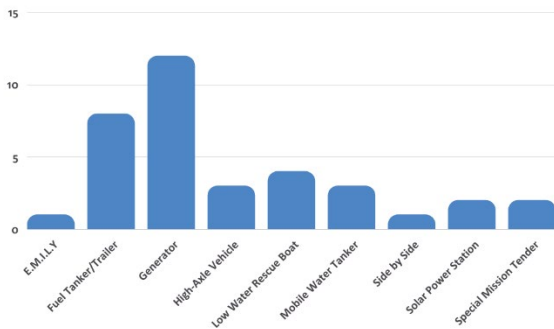


To provide the highest level of benefit to the greatest number of Oregon’s population, greater weight was given to applicants requesting equipment higher on the priority list and those seeking equipment that benefits more than one organization. Regional-based collaborative efforts earned the highest score in the application process, followed by county, tribal, city and individual organizations.

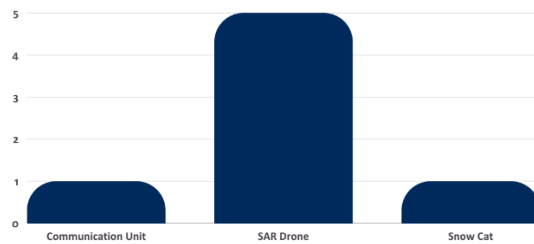
The committee recommended funding 61 applications from 45 entities and grantees were notified in early November. If additional funds remain after these initial grantees are funded, OEM may fund additional programs using the committee’s recommendations.

Urban Search and Rescue equipment included a complete trailer for a trench or USAR rescue situation and a rescue side-by-side with accessories. Three agencies were granted these: Tualatin Valley Fire and Rescue, Eugene Springfield Fire, and Clackamas County Fire. Other priority 1 equipment included multiple types of generators, fuel tankers and trailers, high-axle vehicles, water tankers, and water rescue equipment.

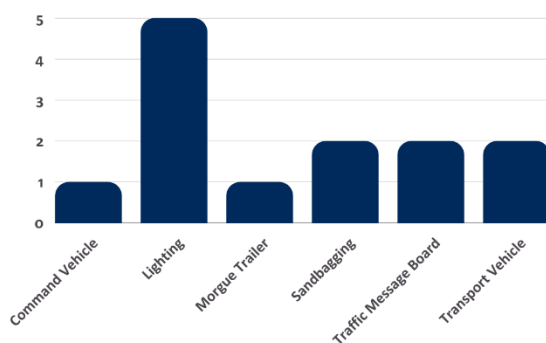
PRIORITY LEVEL 1 EQUIPMENT



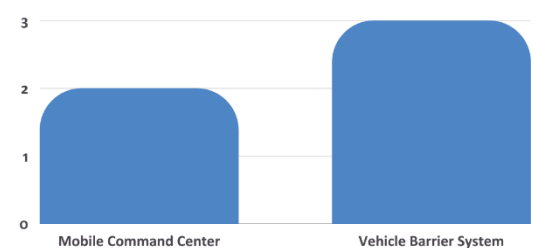
PRIORITY LEVEL 2 EQUIPMENT



PRIORITY LEVEL 3 EQUIPMENT



PRIORITY LEVEL 4 EQUIPMENT



MUTUAL AID

The SPIRE grant encourages mutual aid between local jurisdictions. Many SPIRE recipients have deployed their equipment to area counties and tribes in emergencies.

TRANSITIONS

This has been a year of transitions for SPIRE. During the round two application process, the OEM staff member in charge of the SPIRE program retired in early July 2022,



leaving the position vacant during critical review and award times. OEM staff worked diligently to ensure the application process was completed promptly and brought a new SPIRE Grant Coordinator onboard.

On July 1, 2022, as a result of House Bill 2927, the Oregon Office of Emergency Management became the Oregon Department of Emergency Management. As a standalone department, OEM is no longer housed under the Oregon Military Department (OMD). Titles for equipment purchased during the first SPIRE round have been transferred from OMD to OEM, and OEM is in the process of completing the transfer and licensing process and finalizing outstanding equipment delivery for SPIRE I.

OEM is in the process of purchasing asset tracking software for equipment to improve tracking and the ability to deploy emergency response equipment. When fully implemented, all equipment information will be entered into the system, including types of equipment, location and contact information. OEM will be able to quickly locate the closest available equipment and facilitate communication between those who have equipment and those who need it.

The program is also scheduled to add a maintenance tracking component. Grant recipients are responsible to train staff and maintain equipment. OEM will be able to work with grantees to ensure that the equipment is ready and usable when the need arises.

2021 SPIRE FOLLOW UP

At the end of 2021, there were six mass casualty trailers and 10 water treatment system trailers remaining to be delivered from SPIRE I. OEM has scheduled a training for the mass casualty trailers the second week in January 2023. The water system trailers will be delivered, and training provided, by the end of February 2023.

OEM established procedures to ensure that equipment not being used can be distributed to where it will be useful. Management, staffing and training priorities all change. If equipment is under-utilized, entities can choose to return equipment for others who need it. Two grantees have chosen to return their equipment. In both cases, the equipment was jet skis for water rescue. The agencies did not have the staff or means to properly train and deploy the equipment when needed in an emergency. OEM is working to ensure future application processes certify applicants have planned all aspects of maintaining and using the equipment.



ONGOING CHALLENGES

OEM anticipates supply chain constraints will continue to impact the ability to procure and distribute emergency equipment. OEM will work to communicate status and impacts with applicants and partners continually.

OEM solicits volunteers for the SPIRE grant review committee to have representation that mirrors the applicants and diversity of Oregon communities. The number of applications and time spent to thoroughly review applications takes considerable time and effort. Finding available and willing committee participants that are diverse geographically and by discipline remains an ongoing challenge.

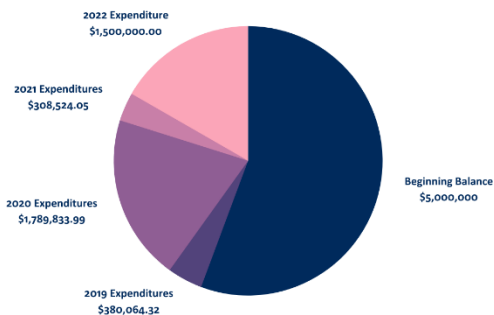
There are a limited number of Urban Search and Rescue teams in Oregon. The change in the 2021 legislation prioritizing Urban Search and Rescue reduced the availability of equipment for search and rescue teams across Oregon by prioritizing equipment for metropolitan areas in the Willamette Valley. OEM worked with the state search and rescue coordinator and large fire departments across the state to ensure the USAR equipment recommendations were in line with local needs. OEM has received feedback that many search and rescue agencies were anticipating they would be the focus of the second round of funding, but do not qualify as urban search and rescue.



FINANCIAL SUMMARY

OEM continues to use SPIRE funds to receive the best possible equipment for the best possible price.

EXPENSES BY YEAR



Expenses by Year:

Beginning Balance: \$5,000,000

2019 expenditures: \$380,064.32

2020 expenditures: \$1,789,833.99

2021 expenditures: \$308,524.05

2022 expenditures: \$1,500,000.00

Funds remaining: \$1,021,577.64 (projected to be spent in 2023)

Estimated funds remaining after all equipment is procured: \$0.00

LOOKING FORWARD

Looking forward to the next round of applications, OEM will review the last two processes and integrate the lessons learned. The agency plans to have an open discussion time and accept written feedback. OEM has already received some feedback from participants that will be integrated into updated processes.

This year has been a year of challenge, change and growth. OEM is excited to move forward with new staff, facilities and systems to ensure communities have the equipment needed to respond to emergencies. The SPIRE program has been an integral part of protecting Oregonians and the agency looks forward to continuing to fill the gaps for communities throughout Oregon.

SEE: Appendix A – SPIRE Equipment List; Appendix B – Grantee List



State Preparedness and Incident Response

Grant Program Equipment List

March 1, 2022

**Note: Pictures are for informational purposes only. Actual equipment may vary from the photo. This list provides the minimum capability of each equipment type.*

Priority 1: Save/Sustain Lives

Option A: Portable Power Generation

Mobile 30kW Generator, diesel, trailer mounted



Option B: Portable Power Generation

Mobile 56kW Generator, diesel, trailer mounted



Option C: Portable Power Generation

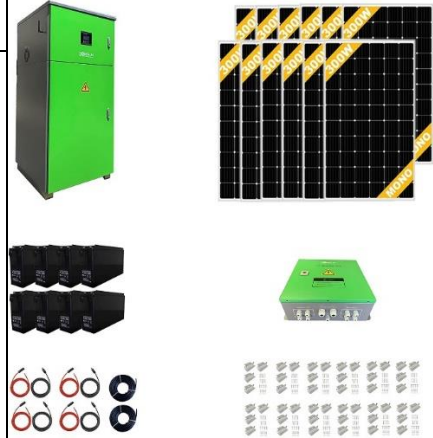
Mobile 108 kW Generator, diesel, trailer mounted



Option D: Power Generation (Solar)

Solar 6kw off Grid Power Station

- Split phases 120V 3KW / 240V 6KW continuous output power (12KW surge)
- 19.2 KWh Battery Storage Capacity
- 3.6 KW Solar Power Charging
- Standalone Working for Off-grid Power Supply.
- Supports UPS and Backup Power supply mode.
- Dual Isolated Transformers.
- Easy DIY: Inverter, solar charger, batteries are all-in-one prewired unit.
- Complete kits ready to install.



Mobile Water Tankers

500 Gallon Water Trailer with trailer and pump



Fuel Transportation (Tankers)

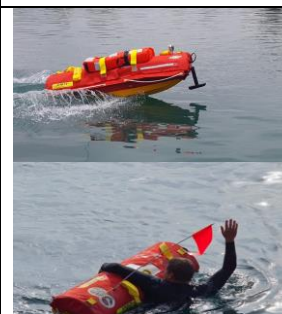
500 Gallon transportable fuel tank with DOT approved fully galvanized trailer



Emergency Integrate Lifesaving Lanyard E.M.I.L.Y

River & Flood Rescue
 Beach & Ocean Rescue
 Remote control rescue craft

31 LBS, Speed: 31 MPH, Size: 14x14x50 IN, Motor: 2.4 KW Run time:5-6 Min



High-Axle Rescue Vehicles

A four-wheel-drive gas High-Axle Truck can operate in high water, snow, and sand. Comes equipped to rescue multiple people.

They are highly adaptable/modular and can be customized to support any type of auxiliary equipment.

Note: This equipment is only available to applications which include a fire, rescue, or law enforcement organization as the applicant or partner organization.



Low Water Rescue Boat

21' All Welded Light-Weight/Heavy Duty Construction
Mercury 200 Optimax DFI SportJet
40 Gallon Fuel Tank System

Note: This equipment is only available to applications which include a fire, rescue, or law enforcement organization as the applicant or partner organization.



Priority 2: Obtain/Maintain Situational Awareness

Option A: Communication Units/Sets

Self-contained multi-purpose communications platform that provides power, lights, and multiple communication functions (Cellular, Satellite, land mobile radio).

Note: Applicants requesting must include in application that they have technical expertise and necessary certifications to maintain and deploy this equipment.



Option B: Communication Units/Sets

Small portable communications package can be configured to provide radio, VoIP, and Wi-Fi communications.

Note: Applicants requesting must include in application that they have technical expertise and necessary certifications to maintain and deploy this equipment.



Snow Cat

- Qsb 130 H.P. Tier 4F Cummins Diesel Engine
- Allison 2500 Automatic Transmission
- Spicer 60 Differentials W/H.D. Drivelines
- 62" Insulated 4 Passenger Cab
- J1040 R.O.P.S. Cab
- Front Bucket Seats
- Locking Door Handles
- Rear Door Entry Steps
- 3 Point Seat Belts
- Personnel Assist Handles
- Cab Fan
- Cab Heater – 36,000 B.T.U.
- Interior Dome Light
- Front Defrost W/Adj Outlets
- Tinted Safety Glass
- Full Engine Instruments
- Odometer/Hour Meter
- Intermittent Windshield Wipers
- 12 Volt Power Port Outlet



Unmanned search/rescue/imaging vehicles

SAR Drone:

Forward, upward, and downward object avoidance system

3 mile/7km range

Weatherproof enclosed design allows for flights in inclement weather and rain (IP-43 rated)

Higher capacity TB55 batteries allow for higher flight times (30-35 minutes depending on payload)

Built-in ADS-B receiver alerts the pilot(s) of nearby manned aircraft

High-performance motors paired with 17" propellers ensure stable flight in strong winds (22.3 mph maximum)

Dual-battery power system with internal heaters allow for greater operating temperature range (-4° to 113° F/-20° to 45° C)

9" x 34.6" x 14.9" unfolded/28.1" x 8.7" x 9.3" folded

4lb/2kg payload capacity



Note: This equipment is only available to applications which include a fire, rescue, or law enforcement organization as the applicant or partner organization.

Note 2: Applicants must comply with any and all regulations regarding the use of drones set by the FAA. See the following:

https://www.faa.gov/news/fact_sheets/news_story.cfm?newsId=22615

Priority 3: Incident Stabilization

Option A: Portable Lighting

Portable LED light tower, trailer mounted.

Features: Four 240 watt (22,000 lumens) light fixtures, 15 and 20 amp power inlets. Withstands winds up to 45 mph.



Option B: Portable Lighting

Portable LED Light Tower, trailer mounted.

Features: Four 296 watt fixtures, 43,000 lumens per fixture. Withstands winds up to 65 mph.



Traffic Message Board

On-board dedicated NTCIP-compliant controller

- 5 LEDs per pixel provide uniform light output
- Energy-efficient LED display provides minimal battery maintenance and long operational life
- Automatic intensity control provides optimum LED intensity
- Industrial-grade trailer provides stable platform
- Powder-coat paint for improved fade and scratch resistance



Morgue Trailers

Standard Specifications

- 17 to 31 Foot Interior Length (16-48 Cadavers)
- 4" Nominal Closed-cell Polyurethane Insulation
- Maintain 35°F (1°C) in 110°F (43°C) Ambient Temps
- Bumper-pull (Towed with Most SUV's or Pick-up Trucks)
- Low Floor, Easy-Access Ramp Systems
- Motion-Sensing Interior Lighting
- Seamless, Heavy-Duty Commercial Flooring
- Aluminum or Composite Interior Walls
- Aluminum Rolling Racks
- 30+ Year Lifespan



Durable 10+Pax transport Vehicle

10+ Person Crew Carrier, intercom with headsets, and gear storage.



Sandbagging Machine

Trailer mounted, 1,600 bags per hour with full crew of 5 to operate at full capacity. Fills 4 bags at a time.



Priority 4: Initiate Recovery

Mobile Command Center (Trailer)

EXTERIOR

- 35-foot length trailer (includes hitch)
- Gelcoat fiberglass exterior
- PTZ night vision camera mounted to telescopic pole
- Digital satellite system
- LED scene lights
- Awning

ELECTRONICS

- 2-110v, 1-12v, 2-CAT6 & 1-antenna pre-wire workstation
- Full-perimeter wire chase system w/ removable cover
- Onan diesel 8kw generator
- 13,500 BTU air conditioning w/ heat pump

INTERIOR

- 3 workstations each w/ task chair
- 7 person conference room
- Lavatory w/ commode (including 2 waste cartridges), sink & vanity
- Custom overhead aluminum cabinets w/ dry erase surfaces
- High-impact laminate countertops
- Fiberglass interior walls
- Raised coin flooring



Communications vehicle/tactical command vehicle

Capabilities

- Connectivity optimized on the fly
- Off-pavement, off-grid capable
- Interoperable voice, video, and data
- Deploys in under seven minutes

Applications

- Emergency management
- Utility, energy, and telecom
- Fire, hazmat, and search + rescue



Archer -1200-Vehicle Barrier System w/ Archer Drop Deck Trailer

- Allows for one-person deployment of an 8 barrier trailer kit in
- under 10 minutes.
- Permits pedestrian and emergency vehicle access without
- moving a barrier.
- Archer Hauler allows for easy movement of barriers by adults of any stature.
- No maintenance, electricity, hydraulics, or batteries required.
- Full ballistic protection for any armor piercing 50 caliber
- rounds.



HVAC Systems

- Dimensions: 55 x 35 x 36"
- Cooling Capacity: 42,000 Btu/hr.
- Heating Capacity: 40,000 Btu/hr.
- Voltage/Phase/HZ: 240/1/60



Water-Gate Flood Barriers

Water-Gate flood barriers have been specially designed to provide unfailing protection against the flooding problems faced by many cities and towns located mainly in flood-prone areas. This innovative and unprecedented intervention equipment combines simplicity, robustness, and reliability.



Urban Search and Rescue (USAR) Equipment

Complete USAR Trailer

The Special Mission Tender (SMT) comes fully loaded with all the equipment needed for a Trench or USAR rescue situation. It comes mounted on a 16 ft or 20 ft Wells Cargo Trailer. With wall mounted struts on quick release tension springs, on-board lighting, drop down ramp tail door, specialized storage racks, hose hangers, generator mounts, scene lighting, and purpose built heavy duty base storage bins, the SMT is a one-stop-shop for all your needed rescue equipment, thoughtfully organized into a mobile response package.



Rescue Side by Side w/Accessories

- The sealed cabs keep rescuers out of the elements during adverse weather and breathing conditions. This model comes with front winch, front and rear cameras, GPS, 2,500 lbs. towing, and 1,500 lbs. payload.
- ATV Wagon Trailer
4 Wheels tandem axle, light weight.
- 7'x18' Tandem Axle Utility Trailer

*****Urban Search and Rescue (USAR) equipment may only be applied for by a deployable USAR Teams*****



****Note: Pictures are for informational purposes only. Actual equipment may vary from the photo. This list provides the minimum capability of each equipment type.***

SPIRE II, Priority 1 Ranked List

Name of Applicant	Equipment requested	Score	%
Marion County FD	108kW Generator	140.2	100%
Tualatin Valley F&R	Side by Side w/Trailer	139	99%
Garibaldi FD	Low Water Rescue Boat	137.2	98%
Douglas County Fleet Services	Option B: Portable Power Generation	136	97%
Eugene Springfield Fire	Gen2 SMT Gen 2 Trailer	130	93%
Grant County Sheriff's Office	Option B: Portable Power Generation	127.8	91%
Oakland RFD	Option B: Portable Power Generation	127.2	91%
City of Dallas PD	Fuel Tanker	125.2	89%
Jackson County FD	Low Water Rescue Boat	124.3	89%
Central Cascades Fire and EMS	High-Axle Vehicle	123.4	88%
City of Gresham	500 Gallon Fuel Trailer	122.8	88%
Lincoln County Sheriff's Office	High-Axle Vehicle	122.5	87%
City of Cannon Beach	Mobile Water Tanker	121.8	87%
Southwestern Polk County RFD	Fuel Tanker	121.4	87%
Tualatin Valley Water District	Option B: Portable Power Generation	121	86%
Tualatin Valley Water District	Mobile Water Tanker	120.2	86%
South Tillamook County Emergency Volunteer Corps	Option B: Portable Power Generation	119.7	85%
Clatsop County	Fuel Tanker	119.5	85%
City of Cannon Beach	Fuel Tanker	118.6	85%
Polk County Public Works	Option A: Portable Power Generation	118	84%
South Tillamook County Emergency Volunteer Corps	Option D: Power Generation (Solar)	117.3	84%
City of Oakland	500 Gallon Fuel Trailer	117	83%
Tualatin Valley Water District	Fuel Tanker	116	83%
City of Talent	Option C: Portable Power Generation	114.3	82%
City of Medford	Option A: Portable Power Generation	113.5	81%
Grant County Sheriff's Office	Fuel Tanker	112.3	80%
Clackamas County FD1	Gen2 SMT Gen 2 Trailer	111	79%
Woodburn Fire District	Mobile Water Tanker	110.2	79%
South Tillamook County Emergency Volunteer Corps	Option D: Power Generation (Solar)	108.3	77%
City of Grants Pass	Emergency Integrate Life Saving Lanyard E.M.I.L.Y	107.5	77%
Douglas County Fire District No. 2	E Emergency Integrate Life Saving Lanyard E.M.I.L.Y	107.5	77%
Multnomah County EM	Option B: Portable Lighting	107.4	77%
City of Detroit	Option B: Portable Power Generation	107.2	76%
City of Manzanita	Option A: Portable Power Generation	107	76%
Clatsop County	Option C: Portable Power Generation	106.8	76%
Columbia County Sheriff's Office	Low Water Rescue Boat	106	76%
Columbia County Sheriff's Office	High-Axle Vehicle	105	75%
Douglas County Sheriff's Office	Low Water Rescue Boat	104.8	75%

SPIRE II, Priority 2 Ranked List

Name of Applicant	Item Requested	Score	%
Linn County EM	Option A: Communication Units/Sets	151.33	100%
Scappoose rural fire district	Unmanned Search/Rescue/Imaging Vehicles	125.00	83%
City of Grants Pass	Unmanned Search/Rescue/Imaging Vehicles	121.00	80%
Jackson County Sheriff's Office	Unmanned Search/Rescue/Imaging Vehicles	117.67	78%
Washington County Consolidated Communications Agency	Snow Cat	116.33	77%
Columbia County Sheriff's Office	Unmanned Search/Rescue/Imaging Vehicles	115.83	77%
Eugene PD	Unmanned Search/Rescue/Imaging Vehicles	114.50	76%

SPIRE II, Priority 3 Ranked List

Name of Applicant	Item Requested	Score	%
Clackamas Fire District #1	Durable 10+Pax Transport Vehicle	125.67	100%
Polk County EM	Sandbagging Machine	124.00	99%
Tillamook County Emergency Management	Option B: Portable Lighting	124.00	99%
Clackamas County FD 1	Durable 10+Pax Transport Vehicle	122.00	97%
Multnomah County Emergency Management	Morgue Trailers	116.00	92%
Wasco County EM	Communications Vehicle/Tactical Command Vehicle	110.80	88%
Clatsop County	Option B: Portable Lighting	105.00	84%
City of Halfway	Sandbagging Machine	97.17	77%
Lane County Public Works	Option B: Portable Lighting	96.71	77%
Lane County PW	Option B: Portable Lighting	96.63	77%
City of Lake Oswego	Traffic Message Board	94.60	75%
Lane County	Traffic Message Board	94.33	75%

SPIRE II, Priority 4 Ranked List

Name of Applicant	Item Requested	Score	%
Ashland PD	Vehicle Barrier System w/trailer	140.83	100%
Grants Pass Police Department	Vehicle Barrier System w/trailer	139.17	99%
City of Medford	Vehicle Barrier System w/trailer	138.33	98%
Linn County Emergency Management	Mobile Command Center (Trailer)	125.33	89%
Baker County Sheriff's Office	Mobile Command Center (Trailer)	112.67	80%
Oregon State University	Vehicle Barrier System w/trailer	112.00	80%

**SPIRE II: Currently unfunded in 1st round
(Possible funding in future, by rank and priority)**

Priority 1

Name of Applicant	Equipment requested	Score	%
Douglas County Fleet Services	Option B: Portable Power Generation	104	74%
Amity	108kW Generator	103.3	74%
Marion County Emergency Management	Option B: Portable Power Generation	101.7	73%
Legacy Silverton Medical Center	Option C: Portable Power Generation	101.7	73%
Columbia County Sheriff's Office	Low Water Rescue Boat	101.5	72%
Rainbow Water District	Mobile Water Tanker	100.5	72%
Winston PD	Option B: Portable Power Generation	100	71%
Jackson County FD 3	Fuel Tanker	99.3	71%
Douglas County Fleet Services	Option B: Portable Power Generation	98	70%
Paul Fire District	Emergency Integrate Lifesaving Lanyard E.M.I.L.Y (River)	97.5	70%
Lowell Rural Fire Protection District	Boat	96	68%
Umatilla County EM	Low Water Rescue Boat	95	68%
Coos County Emergency Management	High-Axle Vehicle	95	68%
Lowell Rural Fire Protection District	Generator	95	68%
City of Myrtle Point FD	Low Water Rescue Boat	94	67%
Douglas County Fire District No. 2	Low Water Rescue Boat	93.75	67%
Umatilla County EM	500 Gallon Fuel Trailer	93.3	67%
City of Klamath Falls Crater Lake Klamath Regional Airport	Option A: Portable Power Generation	92.6	66%
Rainbow Water District	Option B: Portable Power Generation	92	66%
McKenzie Fire and Rescue	Low Water Rescue Boat	91.5	65%
Samaritan Health Svc, Samaritan North Lincoln Hospital	Mobile Water Tanker	90.8	65%
Siletz Valley RFD	Emergency Integrate Lifesaving Lanyard E.M.I.L.Y.	90	64%
Knappa-Svenson Burside RFPD	High-Axle Vehicle	88.3	63%
City of Forest Grove	Option C: Portable Power Generation	88.3	63%
Union County Emergency Services	Emergency Integrate Lifesaving Lanyard E.M.I.L.Y.	88.3	63%
Tillamook County EM	Option C: Portable Power Generation	85.8	61%
Portland Fire & Rescue	Fuel Tanker	85	61%
Knappa-Svenson Burside RFPD	Emergency Integrate Lifesaving Lanyard E.M.I.L.Y.	80	57%
Aumsville RFPD	High-Axle Vehicle	79.2	56%
Colton RFD	High-Axle Vehicle	77.5	55%
Junction City RFPD	Low Water Rescue Boat	77.1	55%
City of St. Paul	Option C: Portable Power Generation	75.8	54%
City of Mt. Angel	Option D: Power Generation (Solar)	75	53%
Oregon Trail School District	108kW Generator	74.2	53%
SW Lincoln County Water Peoples' Utility District	500 Gallon Fuel Trailer	72.5	52%
Confederated Tribes of Siletz Indians	Option B: Portable Power Generation	70.8	50%
Confederated Tribes of Siletz Indians	Mobile Water Tanker	70	50%
Klamath County Emergency Management	Mobile Water Tanker	69	49%
City of Dayton	Mobile Water Tanker	65	46%
City of Dayton	Option D: Power Generation (Solar)	53.3	38%

Priority 2

Name of Applicant	Equipment requested	Score	%
Jackson County Sheriff Search and Rescue	Traffic Message Board	111.00	73%
Coos Bay FD	Unmanned Search/Rescue/Imaging Vehicles	108.75	72%
Jackson County Sheriff's Search and Rescue Department	Durable 10+Pax Transport Vehicle	106.54	70%
City of Cannon Beach	Option A: Communication Units/Sets	105.33	70%
Clackamas County Sheriff's Office	Snow Cat	101.83	67%
City of Prineville	Option A: Communication Units/Sets	98.17	65%
Umatilla County Emergency Management	Snow Cat	92.50	61%
Tillamook County	Option A: Communication Units/Sets	91.80	61%
Lincoln City Police Department	Unmanned Search/Rescue/Imaging Vehicles	91.67	61%
Mt. Angel Fire District	Unmanned Search/Rescue/Imaging Vehicles	90.80	60%
City of Myrtle Point	Unmanned Search/Rescue/Imaging Vehicles	90.00	59%
City of Medford	Unmanned Search/Rescue/Imaging Vehicles	88.33	58%
City of Newberg	Option A: Communication Units/Sets	85.83	57%
Confederated Tribes of Siletz Indians	Option A: Communication Units/Sets	81.67	54%
Woodburn PD	Unmanned Search/Rescue/Imaging Vehicles	81.67	54%
Malheur County Sheriff's Office	Option B: Communication Units/Sets	76.00	50%
Douglas County Fire District No. 2	Option A: Communication Units/Sets	75.00	50%
Jefferson County Sheriff's Office	Unmanned Search/Rescue/Imaging Vehicles	65.00	43%
Hood River Sheriff's Office	Multiple request	64.88	43%
Univ. of Oregon	Option B: Communication Units/Sets	61.67	41%
City of Tigard	Option A: Communication Units/Sets	61.67	41%
Malheur Sheriff's office	Option B: Communication Units/Sets	41.67	28%

Priority 3

Name of Applicant	Equipment requested	score	%
City of Talent	Traffic Message Board	92.33	73%
City of Lake Oswego	Traffic Message Board	92.00	73%
Multnomah County Emergency Management	Option B: Portable Lighting	91.83	73%
City of Halfway	Traffic Message Board	89.00	71%
City of Talent	Traffic Message Board	85.67	68%
Baker County Sheriff's Office	Communications Vehicle/Tactical Command Vehicle	85.00	68%
Union County Emergency Services	Sandbagging Machine	84.17	67%
Coos County EM	Communications Vehicle/Tactical Command Vehicle	83.33	66%
City of Madras Public Works Department	Option B: Portable Lighting	82.14	65%
Jefferson County SO	Durable 10+Pax Transport Vehicle	77.00	61%
City of Cottage Grove	Traffic Message Board	75.00	60%
Corbett Water District	Option A: Portable Lighting	72.50	58%
Klamath County	Communications Vehicle/Tactical Command Vehicle	72.00	57%
City of Springfield	Option A: Portable Lighting	72.00	57%
Clackamas River Water	Option B: Portable Lighting	70.83	56%
Southwest Lincoln County Water PUD	Option B: Portable Lighting	69.17	55%
City of Springfield	Option A: Portable Lighting	68.00	54%
City of Madras Public Works Department	Option A: Portable Lighting	66.50	53%
City of Cottage Grove	Traffic Message Board	66.25	53%

Corbett Water District	Traffic Message Board	64.00	51%
Hood River SO	Durable 10+Pax Transport Vehicle	62.20	49%
City of Sherwood	Traffic Message Board	60.71	48%
City of Newberg	Option A: Portable Lighting	58.33	46%
City of Sublimity	Traffic Message Board	55.83	44%
Confederated Tribes of Grand Ronde	Communications Vehicle/Tactical Command Vehicle	55.75	44%
Clackamas County SO	Communications Vehicle/Tactical Command Vehicle	53.00	42%
Jefferson County SO	Communications Vehicle/Tactical Command Vehicle	50.00	40%
Grant County Sheriff's Office	Communications Vehicle/Tactical Command Vehicle	39.75	32%
Portland Bureau of Transportation	Sandbagging Machine	20.00	16%

Priority 4

Name of Applicant	Equipment requested	score	%
City of Sherwood	Vehicle Barrier System w/trailer	102.17	73%
Douglas County Sheriff's Office	Mobile Command Center (Trailer)	95.17	68%
City of Beaverton	Vehicle Barrier System w/trailer	88.33	63%
Multnomah County Emergency Management	HVAC Systems	87.83	62%
city of Lake Oswego	Vehicle Barrier System w/trailer	87.80	62%
Coos County Emergency Management	Mobile Command Center (Trailer)	86.00	61%
City of Newberg	Water-Gate Flood Barriers	82.50	59%
City of Mt. Angel	Vehicle Barrier System w/trailer	78.33	56%
City of Salem	Vehicle Barrier System w/trailer	71.83	51%
Clackamas County Sheriff's Office	Mobile Command Center (Trailer)	62.50	44%
Portland Police Bureau	Vehicle Barrier System w/trailer	54.17	38%
City of Oregon City Police Department	Vehicle Barrier System w/trailer	52.50	37%
City of Dayton	Mobile Command Center (Trailer)	44.17	31%

Not Currently Recommended for Funding (Result of major application issues)

Name of Applicant	Equipment requested
Pine Valley Rural FD	Side by Side w/Trailer
Confederated Tribes of Grand Ronde	Side by Side w/Trailer
Union County Emergency Services	Side by Side w/Trailer
City of Aumsville	Option C: Portable Power Generation
City of Detroit	Option B: Portable Power Generation
City of Aumsville	Fuel Tanker
City of Aumsville	Option B: Portable Power Generation
Samaritan health services, Samaritan North Lincoln Hospital	Option C: Portable Power Generation
Columbia County Sheriff's Office	Option A: Portable Power Generation
Applegate Valley RFPD 9	Option A: Portable Power Generation
Samaritan health services, Samaritan North Lincoln Hospital	Fuel Tanker
Colton RFD	Option B: Portable Power Generation
St. Paul Rodeo Foundation	108kW Generator
Colton RFD	Fuel Tanker
Crescent RFPD	Option A: Portable Power Generation
Government Camp Sanitary District	108kW Generator
Confederated Tribes of Grand Ronde	Fuel Tanker

Corbett Water District	Option B: Portable Power Generation
Chiloquin F&R	Option B: Portable Power Generation
Marion County Emergency Management	Option B: Portable Power Generation
Marion County Emergency Management	Option B: Portable Power Generation
Neskowin Regional Water District	30kW Generator
Columbia County Sheriff's Office	High-Axle Vehicle
Jackson County FD 3	High-Axle Vehicle