



**Jackson Care Connect™**

Part of the CareOregon Family

Starting Strong

[jacksoncareconnect.org](http://jacksoncareconnect.org)

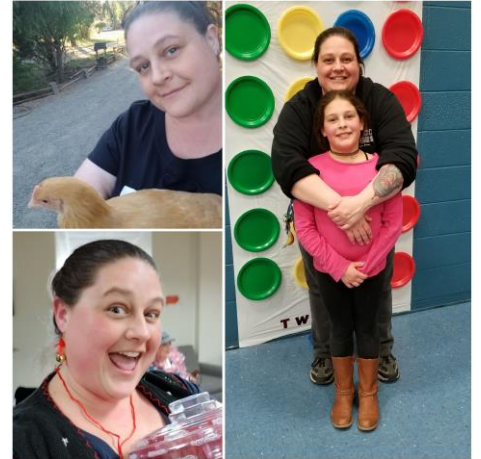
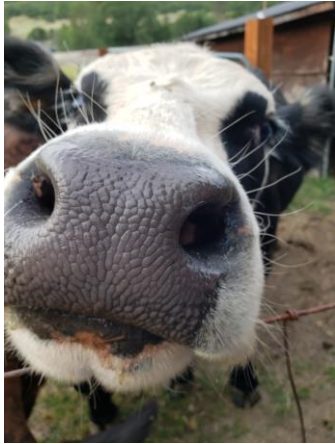
[facebook.com/jacksoncareconnect](https://facebook.com/jacksoncareconnect)



**Jackson Care  
Connect™**

# Riki Rosenthal

Starting Strong Program Specialist / Community Engagement Team



[jacksoncareconnect.org](http://jacksoncareconnect.org)  
[facebook.com/jacksoncareconnect](https://facebook.com/jacksoncareconnect)



# My (Our) Story





# Starting Strong

Incentive Program for  
current JCC members

Eligibility consists of two parts:

1) current JCC member

AND

2) pregnant or child under  
the age of 4

# Earn vouchers for healthy activities:

- Prenatal and post-partum appointments
- WIC activities
- Well child checks and immunizations
- Behavioral health activities
- Parenting and family education classes
- And MUCH more

Happy

Healthy

Safe

## Starting Strong Voucher

**Good health is rewarding!**  
As a Jackson Care Connect member, you can earn vouchers for taking care of yourself and your children under 4 years old.

**You can redeem this voucher at our Starting Strong store**  
702 W Main St., Medford  
(across from the Rogue Valley Family YMCA)

**You can earn vouchers for:**

- Pre-natal and postpartum doctor visits
- Well-child visit and vaccinations
- WIC appointments and classes
- Home visiting and early intervention programs
- Dental visits for mom and baby
- Much more — see our website for a full list

Member name: \_\_\_\_\_

Provider/Partner: Please complete this section  
Community Partner: \_\_\_\_\_

Partner/Provider name printed here

Date: \_\_\_\_\_

Purpose of visit: \_\_\_\_\_

\_\_\_\_\_

 Jackson Care Connect Starting Strong

Redeem this voucher at the Starting Strong store for helpful supplies.

Visit [jacksoncareconnect.org/startingstrong](http://jacksoncareconnect.org/startingstrong) for full list of eligible activities and participating providers and partners.

- Diapering and potty training ..... 1 to 10 vouchers
- Cooking supplies ..... 1 to 8 vouchers
- Breastfeeding ..... 2 to 8 vouchers
- Car seats ..... 13 to 15 vouchers
- Health and safety ..... 2 to 5 vouchers
- Baby gear ..... 6 to 12 vouchers
- Gift cards ..... 3 to 6 vouchers

*Selection, styles and voucher amounts may change without notice.  
Vouchers expire 90 days after Starting Strong eligibility ends.*

**Starting Strong store**

702 W Main St., Medford  
(across from the Rogue Valley Family YMCA)  
Hours: Tues - 9 a.m. to 3 p.m.; Thurs - noon to 6 p.m.  
Phone: 541-494-1004  
Email: [startingstrong@jacksoncareconnect.org](mailto:startingstrong@jacksoncareconnect.org)  
Website: [jacksoncareconnect.org/startingstrong](http://jacksoncareconnect.org/startingstrong)

 Jackson Care Connect

*To get this information in large print, in another language, Braille or another way that is best for you, please call our Customer Service number toll-free at 855-722-8208 (TTY: 711)*

 Jackson Care Connect Starting Strong

JCC-SS 17110-1-EN-05.16.18

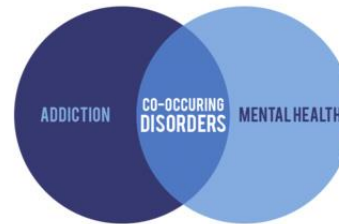
# What do we offer?



And more!

# Building Partner Relationships

Work with others to support your members!





# Pre-COVID





# Current State w/ COVID

## Vouchers can be redeemed through a no-contact ordering process

- Ordering packets can be obtained in English and Spanish
- Program Partner allowed us to have materials at their location
- Orders are placed and sent directly to members
  
- Available items has been limited compared to what was normally available
- Allowing lots of flexibility for members
- Working tightly with partners to get members their earned vouchers



**Jackson Care Connect™**

Part of the CareOregon Family

**Starting Strong**

## Direct Contact:

Riki Rosenthal

[rosenthalr@careoregon.org](mailto:rosenthalr@careoregon.org)

503-416-3397

## Starting Strong contact information:

- Phone: 541-494-1004
- Email: [startingstrong@jacksoncareconnect.org](mailto:startingstrong@jacksoncareconnect.org)
- Bilingual (Spanish) and Bicultural staff available to support our Spanish speaking and Limited English proficiency members.

[News coverage of a project done with a partner!](#)













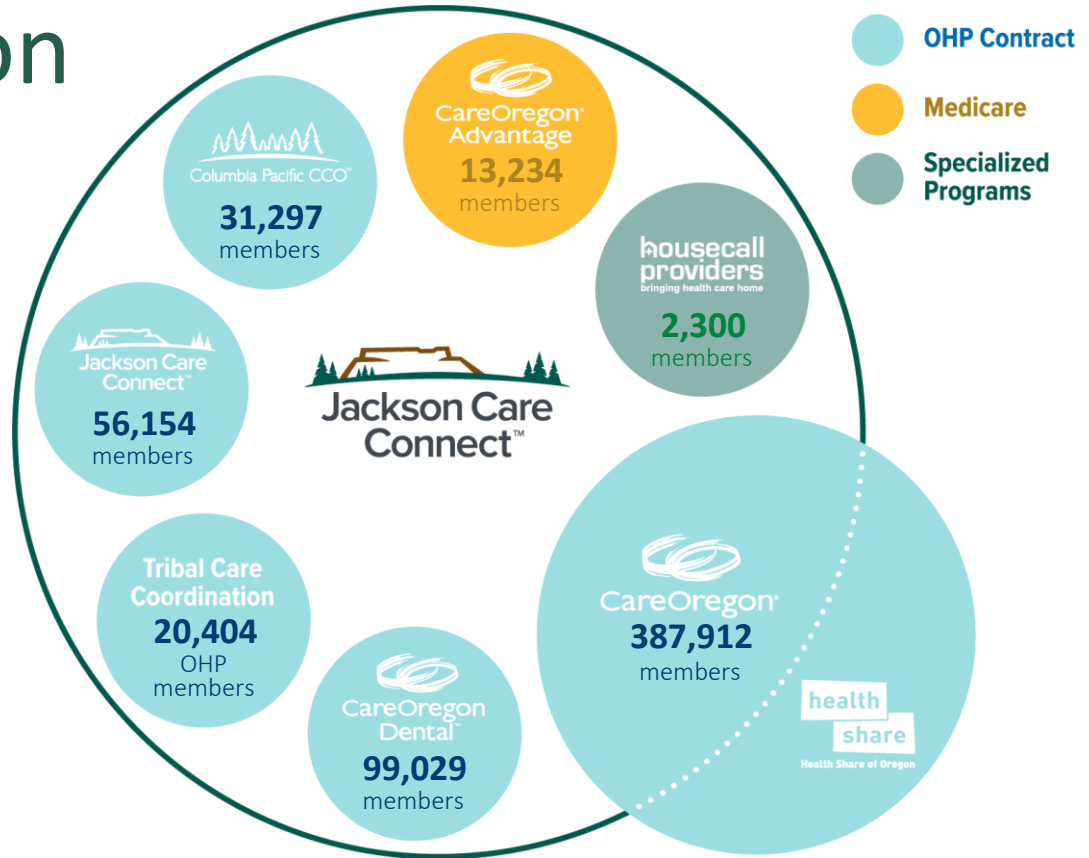






# The CareOregon Family

For more than 25 years, CareOregon has offered health services and community benefit programs to Oregon Health Plan members. Today, we support the needs of 450,000 Oregonians through three coordinated care organizations, a Medicare Advantage plan, a Tribal Care Coordination program, a dental care organization, and in-home medical care with Housecall Providers. CareOregon members have access to integrated physical, dental and mental health care, and substance use treatment. We believe that good health requires more than clinics and hospitals, so we also connect members to housing, fresh food, education and transportation services. CareOregon is a mission-driven, community non-profit with offices in Portland, Medford and Seaside, Oregon.



# About Jackson Care Connect

Since 2012, when Oregon established coordinated care organizations (CCOs), Jackson Care Connect has been dedicated to serving the whole-person health needs of Jackson County's Oregon Health Plan members. As a nonprofit CCO, we provide physical, dental and mental health services through the largest CCO network of medical providers in Southern Oregon. Our priorities are guided by our local board of directors, community advisory council, and deep community ties. We proudly partner with organizations that promote a healthy region and work in partnership with our community to address social determinants of health and barriers to health equity. Jackson Care Connect is part of the CareOregon family of companies and is operated by local staff in downtown Medford.

Thank you.

[jacksoncareconnect.org](http://jacksoncareconnect.org)  
[facebook.com/jacksoncareconnect](https://facebook.com/jacksoncareconnect)

