



100 Million Healthier Lives

Walking Together on a Path of Transformation

Soma Stout, MD MS

Executive Lead, 100 Million Healthier Lives,
Institute for Healthcare Improvement
Lead Transformation Adviser, Cambridge Health Alliance

November 17, 2015 Portland
Oregon Coordinated Care Summit

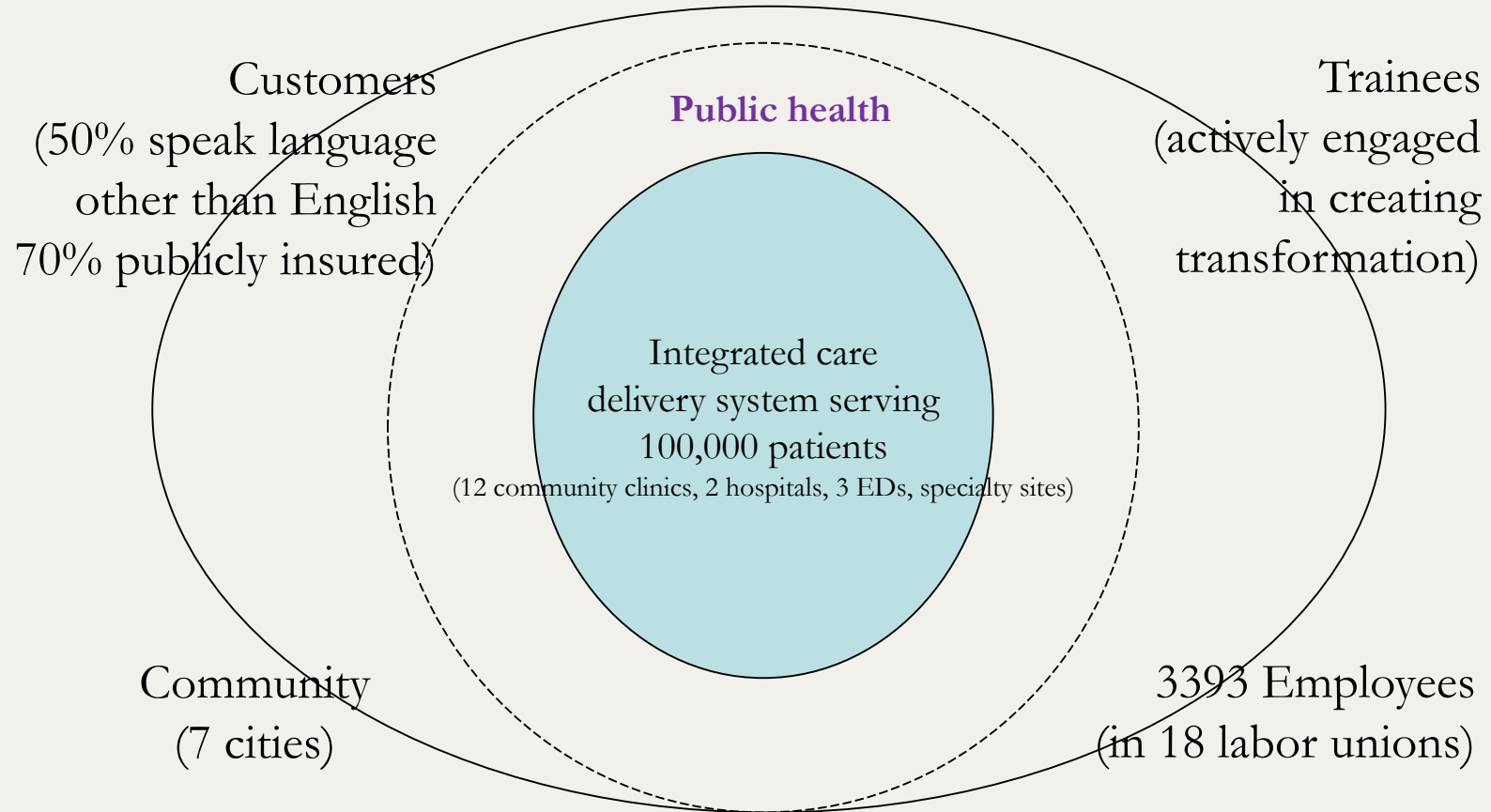


CONVENED BY

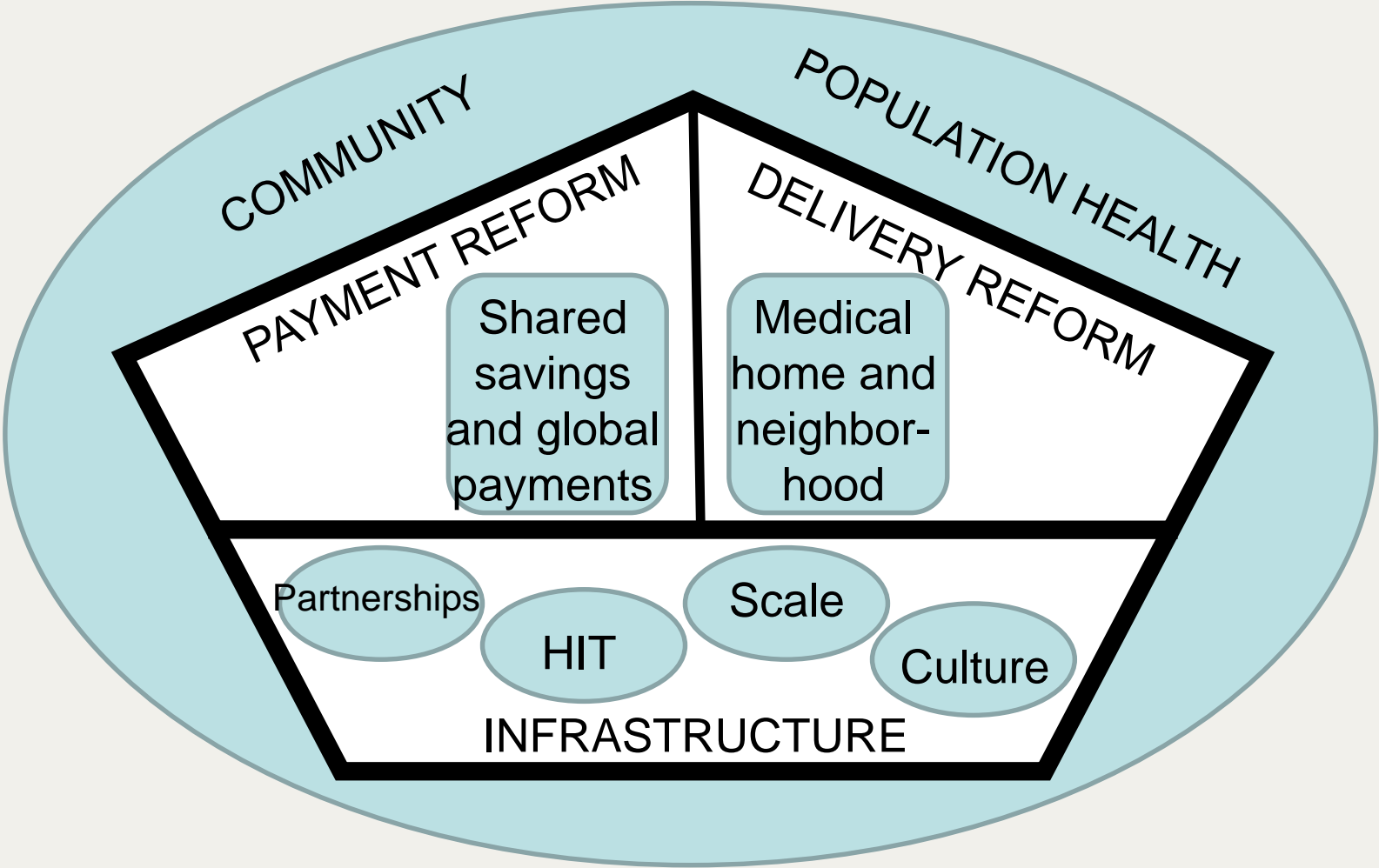




Cambridge Health Alliance (CHA)



Our model of transformation



Relationships + improvement approach + system transformation = outcomes

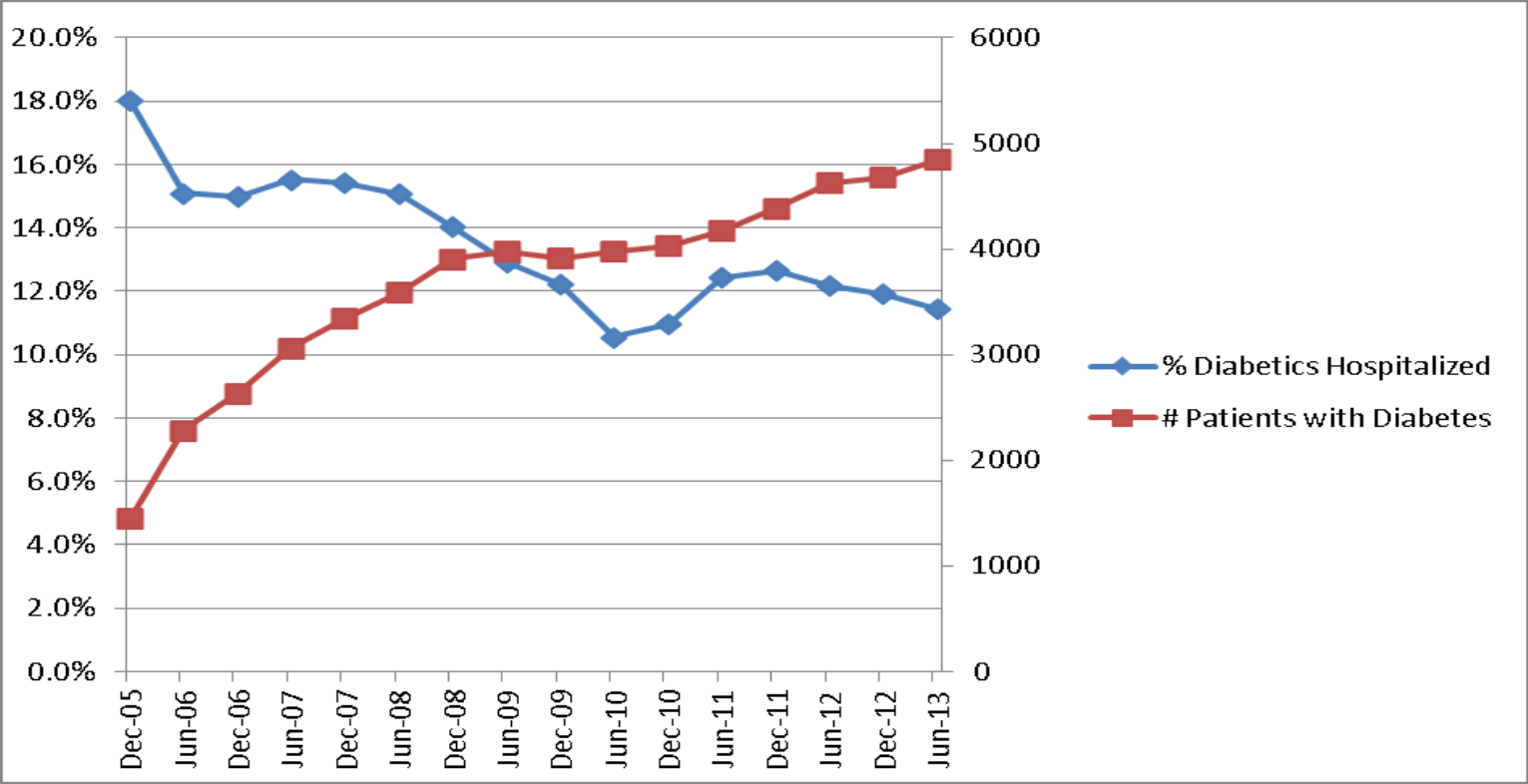


Cambridge Health Alliance Experience

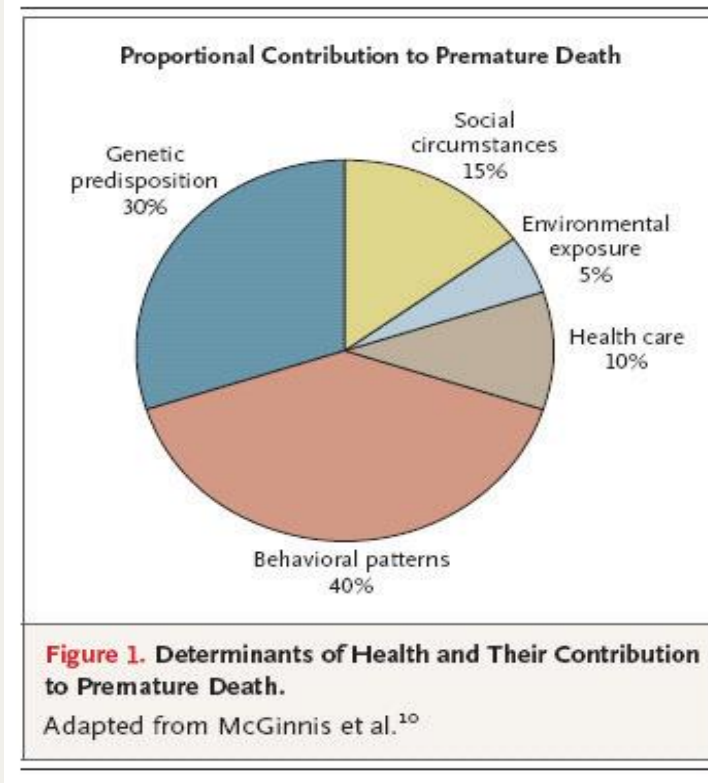


- Improved experience
- 10% reduction in total cost (15% reduction compared to rest of network for Medicaid managed care)
- Improved quality health outcomes for a safety net population to above the national 90%ile
- Improved joy and meaning of work for the workforce
- Was chosen as one of four innovative and effective transformations in the country by HHS

36% Reduction In Hospitalization Rate For Patients With Diabetes



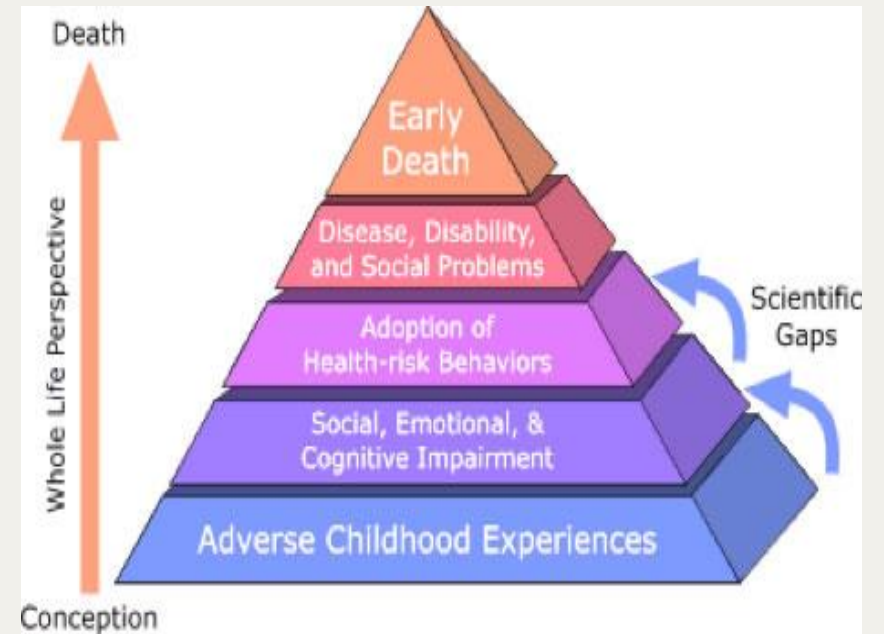
The context of our communities

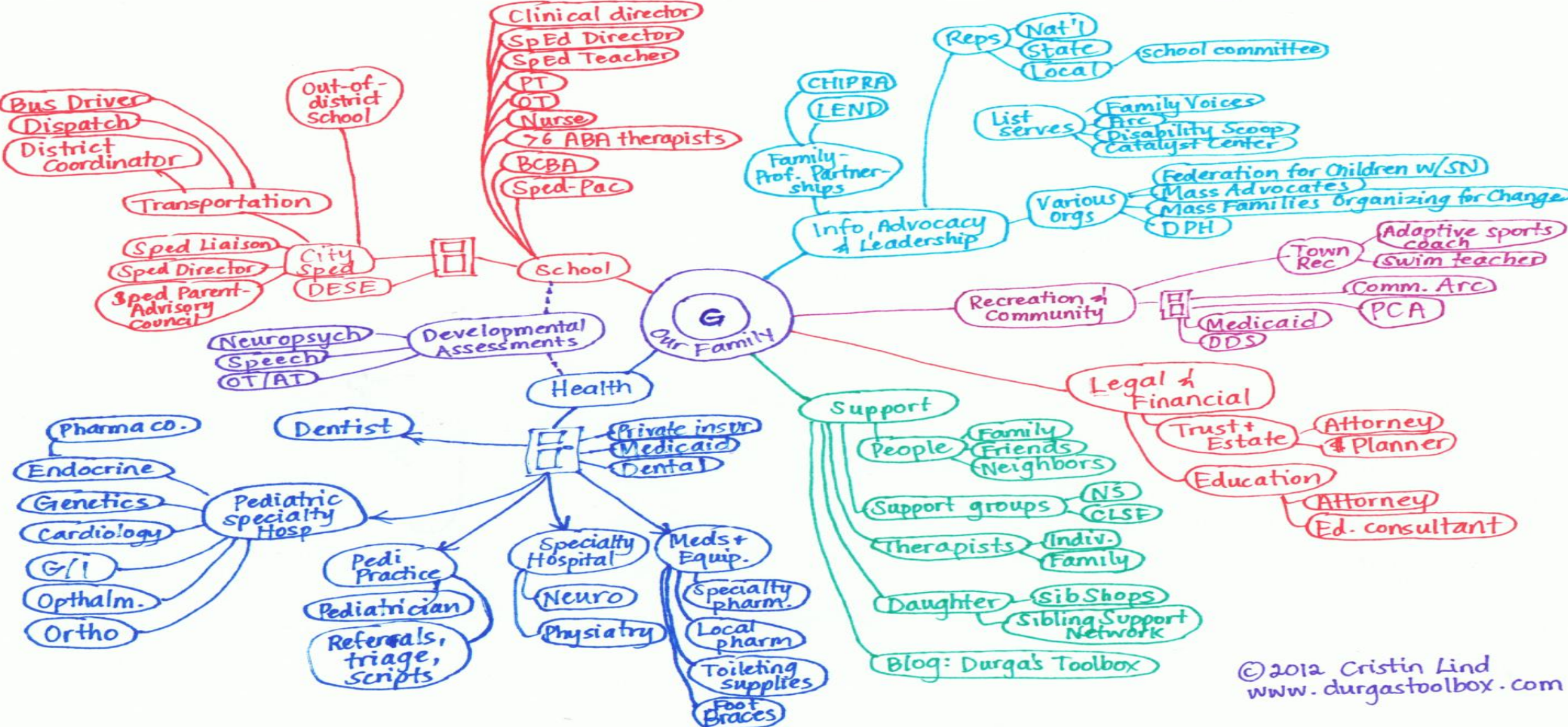


The need for a life course view



- Exposure to toxic stress in early childhood may lead to as much as a 40x increase in rate of chronic disease by the time you're 50.





Cycle of violence, substance abuse, incarceration and reincarceration



1 in 5 people are addicted to a substance in Revere



76% prisoners released are rearrested
“School to prison pipeline”

Equity as a System Property



- The life expectancy of Denmark and Zambia in the space of a few miles
- 10 - 25 year difference in life expectancy depending on where you are born.
- Poverty is a huge factor in disparities.
- Race widens the disparity gap inherent in poverty



Childhood Asthma

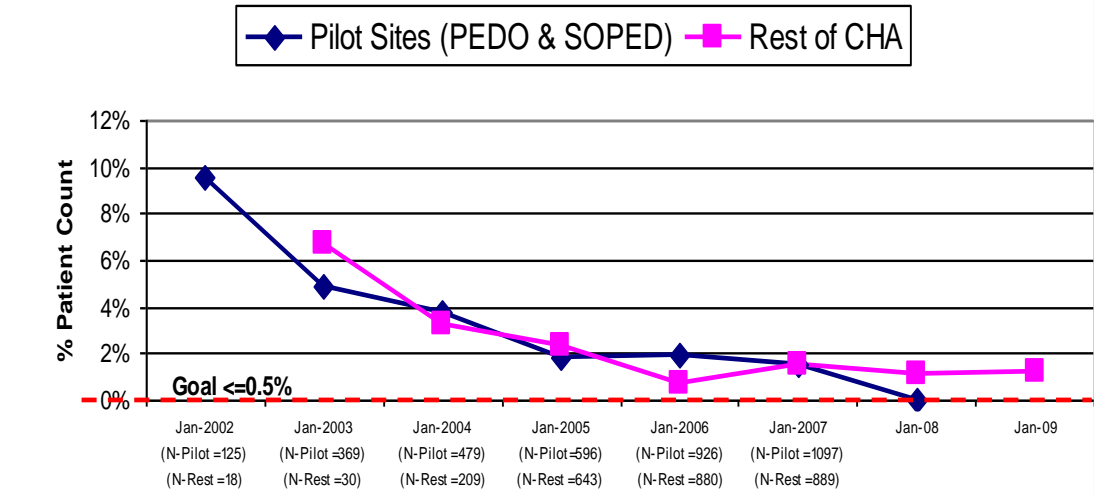


- Partnership between schools, public health, and primary care
- Clear accountability for every child, shared registry
- Partnership with school nurses
- Proactive outreach to patients by the primary care team to get them controlled on asthma medications.
- Healthy Homes assessment through public health partnership.

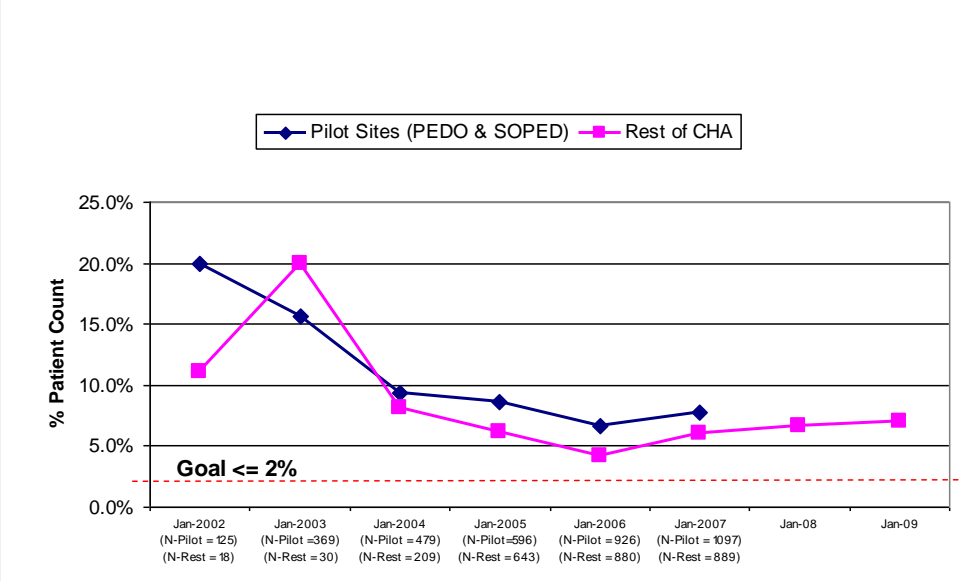
Childhood Asthma Outcomes: Seeing Admissions And ED Visits As A Safety Issue



Childhood Asthma: % Patients with Asthma Admissions



Childhood Asthma: % Patients with Asthma ED Visits



A spiral of collaboration and outcomes



- Tobacco
- Obesity
- Health and wellbeing of the elderly
- Mental health
- Substance use
- Breaking the cycle of violence and incarceration

100 Million Healthier Lives

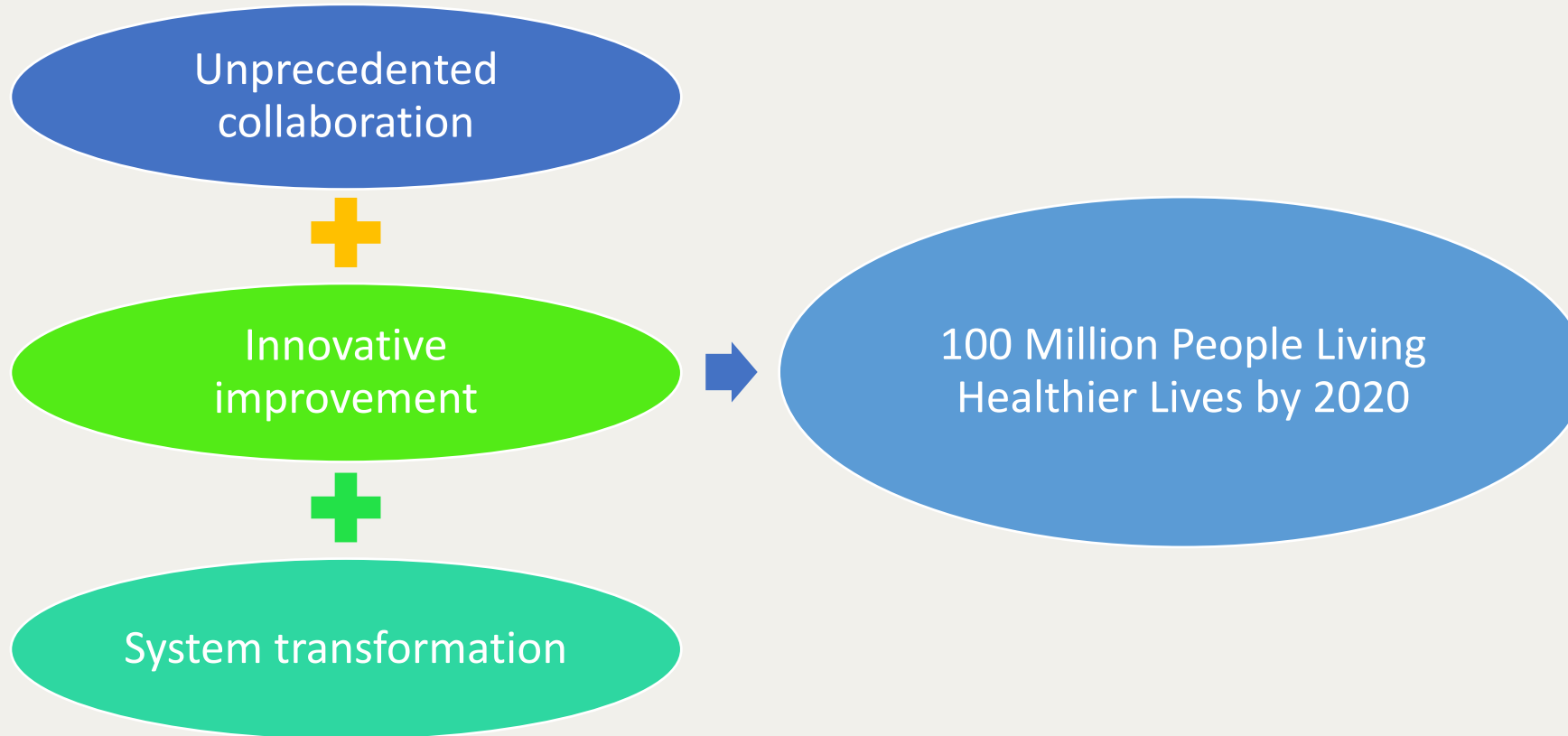


Identity: An unprecedented collaboration of change agents pursuing an unprecedented result:

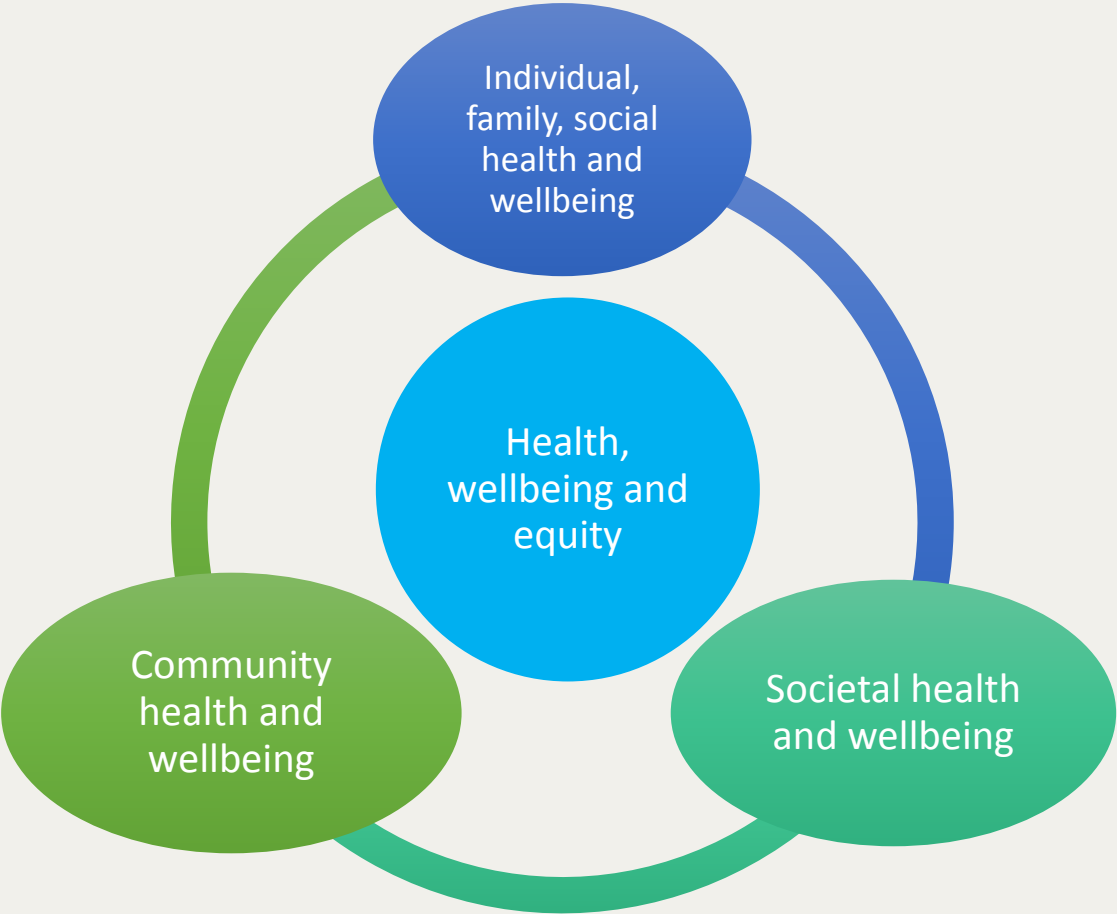
100 million people living healthier lives by 2020

Vision: to fundamentally transform the way we think and act to improve health, wellbeing and equity.

Theory of change - 100 Million Healthier Lives



Interrelationship between the health, wellbeing and equity of people, communities and populations



100 Million Healthier Lives

Our Broad Measurement Framework



Shared priorities “9 What’s”



1. Close equity gaps (price of admission)
2. Help veterans to thrive
3. Address and improve social determinants across the continuum
4. Improve wellbeing of indigenous communities
5. Help all kids have a great start to life
6. Make mental health everybody’s job and take a prevention approach
7. Engage people in their own health (nutrition, exercise, sleep, stress, food security)
8. Improve employee health and wellbeing
9. Create wellbeing in the elder years and end of life

“9 Hows”



1. Shift culture and mindset
2. Develop the health workforce
3. Elevate peer to peer approaches
4. Build improvement capability at the community level
5. Use chronic diseases and risk factors to build the health continuum
6. Improve high quality primary health care access for all
7. Integrate data across siloes
8. Create new financing strategies
9. Transform health care to be great at health and great at care



 100 Million
Healthier Lives

What if we did not
see ourselves as
alone in improving
the health and
wellbeing of our
citizens?

Big White Wall



LinkAges



<https://vimeo.com/83703623>



<https://www.utec-lovell.org/gallery/video>



St Ninian's

We invite you to



1. Join the movement (www.ihl.org/100MLives)
2. Collaborate and know that you are not alone
 - With each other
 - With others across sectors who hold a piece of the puzzle.
3. Create a vision and set measurable aims; learn your way to getting there.
4. Be part of changing the systems that don't work – there is no such thing as an intractable problem.
5. Make improving equity part of your life's work.



100 Million Healthier Lives

www.ihl.org/100MLives

Soma Stout, sshout@ihl.org



CONVENED BY

